

Pasifika Futures Ltd Annual Report 2021



Table of Contents

Table of Contents..... 02

Pasifika Futures Ltd..... 03

Kia Orana from the
Chairman of the Board..... 04

Pasifika Futures Ltd Board of Directors 06

Malo e laumalie
from the Chief Executive..... 08

About Pasifika Futures..... 10

What We Do 11

Snapshot of Success 16

Whānau Ora Stories of Impact 18

Programme Results 24

Funds Source & Destination 30

Programme Expenses 31

Pasifika Futures Ltd

Auckland:
Building 4, 195 Main Highway,
Ellerslie. Auckland

Hamilton:
Level 4, 24 Garden Place,
Hamilton Central, Hamilton 3204

Wellington:
Level 2, Gleneagles Building,
69–71 The Terrace,
Wellington 6011, NZ

Christchurch:
(Etu Pasifika) 31 Tuam Street
Christchurch Central City
Christchurch 8011

Tel: +64 9 250 5761
Fax: +64 9 250 5768
www.pasifikafutures.co.nz



Pasifika Futures Ltd

Pasifika Futures

Nature of Business
Registered Charity

Registered Office
Building 4, 195 Main Highway.
Ellerslie, Auckland 1060, New
Zealand.

Telephone
+64 9 2505761

Charities Registration Number
CC58841

Date of Incorporation
31/3/21 (previously 16/11/2009)

Auditors
BDO, Chartered Accountants.

Solicitors
McVeagh Fleming.
Sarah Edmondson. Associate

Board of Trustees

Dr Kiki Maoate
ONZM, FRACS
Cook Islands. Paediatric Surgeon,
Paediatric Urologist. Canterbury
DHB.

Dr Francis Agnew
ONZM
Cook Islands. Consultant
Psychiatrist. Auckland DHB

Dr Siniva Sinclair
FAFPHM, MPH
Samoan, Public Health Physician

La’auli Sir Michael Jones
KMNZ, MNZM
Samoan, Strategic Development
Manager

Mrs Soana Pamaka
BA, DipT
Tongan, Principal - Tamaki College

Executive Team

Mrs Debbie Sorensen
DCCT, CMinstD. NZRPN
Chief Executive Officer

Mr Wilmason Jensen
BA/LLB.
Deputy Chief Executive

Mrs Seini Jensen
BA/LLB, MA(Hons)
Director of Performance
& Evaluation

Mrs Lucyanne Laurenson
CertTravel
Director of Training & Development

Mr Amanaki Misa
BCM, MBA
General Manager Etu Pasifika Ltd

Mr Craig Sionetauto
BA
Director of Partnership

Mrs Gina Harvey
BSc
Director of People Capability &
Governance

Mrs Rosemary McGlynn,
BBus (Accounting), CA
Director of Finance

Avataeao Junior Ulu,
PHD, MDS, BA, DipT
Director of Pacific Development

Leaupepe Taala Ralph Elika
BA/LLB
Director of Communications



Dr Kiki Maoate, ONZM, FRACS
Chair, Pasifika Futures Ltd

Kia Orana from the Chairman of the Board

We are pleased to present the seventh Annual Report for Pasifika Futures, the Whānau Ora Commissioning Agency for Pacific families.

As we reflect on the year 2020/21, we are reminded of our Pacific forefathers who navigated calamity and uncertainty in unity and faith. We stand proud in knowing they overcame natural disasters, disease outbreaks and rapid change with resilience and strength. Climate change and COVID-19 are significant crises we currently face as a global community, but we are confident we will overcome the adverse impacts of these events through faith, unity, and compassion.

Despite the challenges of navigating through a disruptive year from COVID, our partnerships with Whānau Ora partners, providers and community groups extended our reach to 12,467 families or 54,028 individuals across Aotearoa. Our COVID response enabled the distribution of 10,648 support packages to families and contributed to the achievement of 10,247 well-being outcomes during the year. To date, 37,028 families or 202,065 individuals have received Whānau Ora and COVID support, representing over 50% of Pacific peoples.

We would like to acknowledge the work of our partners and providers in reaching our communities. We value the knowledge, skills, and connections you all bring in serving our communities through lockdowns, the loss of employment, financial insecurity, illness, and isolation. You have exceeded expectations through your selfless service to families in need.

I wish to thank my fellow Directors—Dr Francis Agnew MNZM FRANZGP FACHAM, La’auli Sir Michael Jones KNZM MNZN, Dr Siniva Sinclair FAFPHM MPF and Mrs Soana Pamaka, who bring a wealth of knowledge and experience across health, education, and social sectors. I also thank Mrs Debbie Sorensen and the professional team of people she leads to serve our families, with excellent organisational management.

We remain committed to the partnerships we have with Ministers of the Crown: Hon Peeni Henare Minister of Whānau Ora, Hon Aupito Tofae S’ua William Sio Minister of Pacific Peoples, Hon Andrew Little Minister of Health, and all Pacific Ministers and Members of Parliament. We also value the collaborative partnerships we maintain with government agencies such as Te Puni Kokiri and the Ministry of Health in supporting our families achieve

their education, health, financial and community aspirations, and overcome the challenges of living through a pandemic. Thank you all for the fantastic work you all do every day to achieve our collective vision of Prosperous Pacific families.

The year ahead will be challenging as the global community and Aotearoa continue to develop strategies to bring an end to the COVID pandemic. While this brings more difficult times for our families and communities, it also provides opportunities for our partners and community leaders to develop deeper connections with the communities we serve, to ensure that no one is left behind. This is the resilience we strive for in building our solidarity as Pacific peoples, to overcome uncertainty and the changing tides ahead.

Finally, thank you for joining us on this journey - we welcome and value your contributions.

Kia Manuia

Pasifika Futures Ltd Board of Directors



Dr Tearikivao Maoate ONZM, FRACS
Chair • Cook Island

Dr Tearikivao (Kiki) Maoate is a Paediatric Surgeon and Urologist based in Christchurch. He is a well-respected leader in the Cook Island community and in the health and education sector in both New Zealand and the region. He was awarded an Officer of the New Zealand Order of Merit in 2014 for his dedication and commitment to Pacific Health. In 2015, he was awarded a Commander Royal Crown of Tonga by His Majesty Tupou VI for services to the people of Tonga in health. Kiki is a Fellow of the Royal Australasian College of Surgeons and is the Clinical Director of the Pacific Island Programme. He is Associate Dean, Pacific Health, University of Otago based on Christchurch. Dr Maoate is the Chairperson of Pasifika Medical Association Group.



Dr Francis Agnew MNZM, FRANZCP, FACHAM
Director • Cook Island

Dr Francis Agnew is a pioneer in the development of Pacific mental health services in New Zealand and the wider Pacific region. In 2010, he was awarded a Member of the New Zealand Order of Merit for services to the Pacific community in Mental health.

Francis has been involved in delivering mental health services in the Cook Islands and Samoa and is recognised as an expert in this area. He has provided leadership in the development of Pacific mental health and addiction services in New Zealand and has served on many Government reviews, committees and task forces.

He has a distinguished record of providing voluntary services to the community and actively mentors evolving Pacific clinicians in his area of speciality. Francis is a Fellow of the Royal Australian and New Zealand College of Psychiatrists and a Fellow of the Chapter of Addiction Medicine. He has served as the zonal representative (Australia, New Zealand and the Pacific) for the World Psychiatric Association. Dr Agnew is a Director for Pasifika Medical Association Group.



Dr Siniva Sinclair FAFPHM, MPH
Director • Samoan

Dr Siniva Sinclair was born and raised in Papua New Guinea. Siniva is a fellow of the Australasian Faculty of Public Health Medicine and has completed a Masters in Public Health. She has worked in Samoa as a Specialist Public Health Physician and has worked as a consultant for the World Health Organisation in the Philippines, China, Cambodia, Vietnam, the Solomon Islands and Kiribati. She has worked for UNICEF in Fiji and the Secretariat of the Pacific Community in Samoa, New Caledonia and Fiji. In 2013, she completed the Global Health Delivery summer Intensive Program at Harvard University. In 2017, she was selected to attend the Harvard Business School Women's Leadership Summit.



La'auli Sir Michael Jones KMNZ, MNZM
Director • Samoan

La'auli Sir Michael Jones has a wealth of public and private sector experience having worked in tertiary education and Pacific economic development. He is currently Strategic Development Manager at Matson South Pacific, a regional shipping company. La'auli is passionate about economic and social development for Pacific people both in the Pacific and in New Zealand. Much of his time is spent with young people and in community empowerment. He is Chair of the Village Community Trust and a Trustee of Pacific Peoples Advancement Trust. In 2003, he was inducted into the International Rugby Hall of Fame recognising his considerable commitment and achievements in rugby as an All Black and as a coach and player for Samoa. In 2017, he was invested as a Knight New Zealand Order of Merit.



Mrs Soana Pamaka BA, DipT
Director • Tongan

Soana Akolotu Pamaka is an educational leader, serving the community of Glen Innes for the past 30 years at Tamaki College. Educated at Tonga High School and the University of Auckland, Soana became New Zealand's first Tongan secondary school principal in 2006.

Soana is passionate about enabling the community through educational opportunities and success, and supporting educational innovation and partnerships. Soana has extensive governance experience, including as a trustee on the ASB Community Trust, and Directorships on the Teach First New Zealand Board, Tamaki Redevelopment Company and Te Papa Tongarewa – The Museum of New Zealand. Soana Pamaka was awarded a Blake Leadership Award in 2018.



**Mrs Debbie Sorensen, C.C.T
CMInstD, NZRPN**
Chief Executive Officer

Malo e laumalie from the Chief Executive

We are humbled to present the Annual Report on the progress of Pasifika Futures—the Whānau Ora Commissioning Agency for Pacific families, in supporting our families through our extensive network of Pacific partners and providers across Aotearoa.

The year 2020/21 has presented challenges that have tested our faith, commitment, and ability to pivot operations to meet the needs of our Pacific families. I am proud of the Executive team and staff, including our determined partners and providers who work with us every day, to extend our reach to Pacific families in Aotearoa.

Despite the disruptions of COVID-19 with closed borders and lockdowns, over 25% of Pacific peoples were supported this year. Social, financial, and mental health initiatives were critical to support existing Whānau Ora families and additional families affected by business and school closures, reduced incomes, and loss of employment. Over 12,467 families or 54,028 individuals received whānau and COVID support during the year.

I am pleased to report that we exceeded our 12 Whānau Ora targets over our four domains of education, health, financial and community. Despite school closures and lockdown restrictions, our ECE enrolment target was exceeded, more (1,291) Pacific students participated in sciences, and Pacific students exceeded NCEA Level 2, Level 3, and University benchmarked achievement rates. In health, more families are smoke free, 83% have health plans and 446 individuals accessed mental health services. In finance, 81% of families have reduced debt, more families have business start-ups, and more families are on pathways to increased income and home ownership. More families are also getting connected and valuing culture and language. In addressing the impact of COVID, 362 displaced families were relocated and supported, 267 families received after hours support. Over 10,648 COVID packages were distributed, and families were encouraged to protect their most vulnerable by getting the COVID vaccine.

We received \$54million for the year, a 74% increase on the prior year, and remain grateful for government funding received through Te Puni Kōkiri, Ministry of Health, and the Canterbury and Waitemata District Health Boards. We maintain responsible management of our operations and ensure our staff, partners and providers are trained to serve our communities with integrity and respect. We recognise the importance of

accountability and transparency in our stewardship of public funds and strive to ensure better health, social and economic wellbeing outcomes for our families over the immediate and longer term.

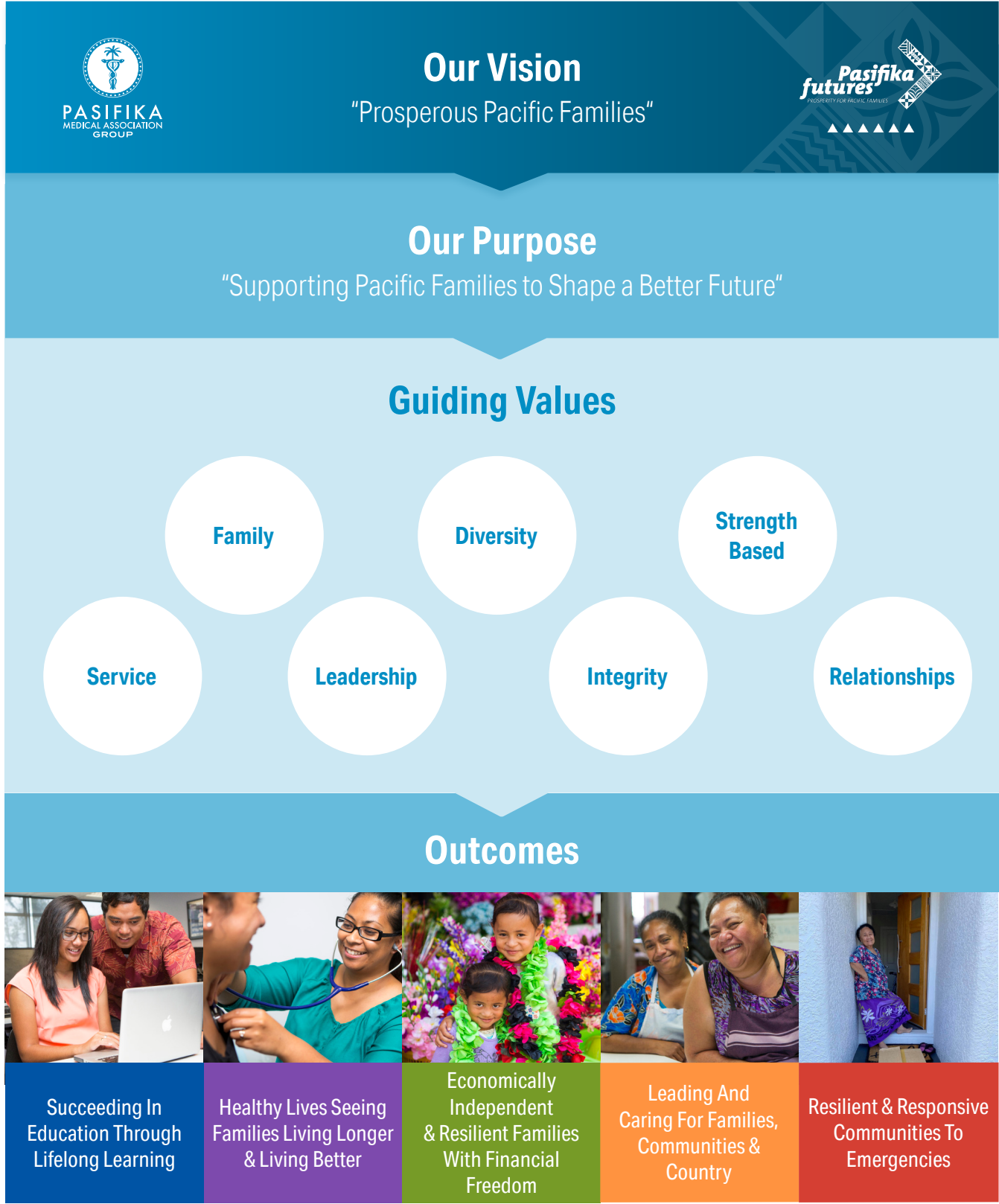
It is a privilege to walk alongside Pacific families and be part of bringing solutions to the challenging waters they navigate along with our partners, to reach shelter from the storms. I thank our partners for the excellent work they do and our Pasifika Futures Board and Chair Dr Maoate for their leadership and direction for the future.

We look forward to the year ahead with faith, hope and determination, as we continue to engage, enable, and empower partners and Pacific families to rise and overcome the changing tides ahead.

Faka'apa'apa atu

1. About Pasifika Futures

Our Vision And Purpose



What We Do

Pasifika Futures is a Whānau Ora Commissioning Agency. We work with regionally based partners to build the capability and capacity of Pacific families. Pasifika Futures supports Pacific families to achieve their aspirations in health, housing, education, training and economic development.



Economically Independent and Resilient

We work with Pacific families to build a pathway to **financial freedom**, through reducing debt, increasing income and savings, gaining and strengthening employment and owning their own homes.



Succeeding in Education

We build **lifelong learning** with Pacific families, through enrolling in early childhood education, achieving at school, helping families support their children's development, supporting school leavers into education, employment or training, and gaining tertiary education qualifications.



Healthy Lives

We work alongside Pacific families to **live longer and better lives** through supporting Pacific families in healthy eating and exercise, immunisation and screening, healthy homes, primary care access, stopping smoking, managing long-term health conditions, and supporting people with disabilities to achieve their aspirations and access services.



Leadership, Culture and Community Connections

We build on the **strengths of Pacific communities** to live in **safe and supported environments**, through fostering Pacific languages, strengthening community connections and participation, resolving conflict non-violently, and ensuring elderly people are safe and connected.



Our Strategy



Principles

Family Co-Design

Access To Support Anyone In Aotearoa

Pacific Solutions To Pacific Challenges

Culturally Anchored

How We Deliver

Through Commissioning Impactful Programmes

Families design, develop & deploy solutions supported by Core navigation

Commissioning Pacific solutions to Pacific challenges through innovation

Strengthening community partnerships to enhance community well-being

Strengthening community resilience to respond to challenging times

Our Organisational Support

Through a Focus on Knowledge & Evidence

Effective governance grounded in Pacific methodologies delivered in a contemporary context

Excellent business and management practices reflecting organisational values and principles

Pacific workforce who excel in Pacific language and cultural capacity and capability with superb technical skill

Strategic deployment of our resources to enhance reach and impact

Outcomes



Succeeding In Education Through Lifelong Learning



Healthy Lives Seeing Families Living Longer & Living Better



Economically Independent & Resilient Families With Financial Freedom



Leading And Caring For Families, Communities & Country



Resilient & Responsive Communities To Emergencies

12



Short Term

Participation (1-4 years)

Medium Term

Engagement (5-9 years)

Long Term

Achievement (10 years +)

<div><div>Succeeding in Education Through Lifelong Learning</div></div> <div>Pacific families are:<ul style="list-style-type: none">Well prepared for schoolingIdentifying their educational pathwaysUnderstanding how to support and nurture educational success</div>	<div>Pacific families are:<ul style="list-style-type: none">Achieving educational successSupporting and nurturing educational successTechnically literate</div>	Lifelong learning <p>Pacific families are achieving success across all educational pathways.</p>
<div><div>Healthy Lives: Seeing Families Living Longer and Living Better</div></div> <div>Pacific families are:<ul style="list-style-type: none">Embarking on the journey to live a smoke-free and healthy lifestylePartnering with health professionals in the management of their healthFully immunisedProgressing towards achieving their aspirations for those living with disabilities</div>	<div>Pacific families are:<ul style="list-style-type: none">Smoke freePhysically active and making healthy eating choicesManaging their health in partnership with health professionalsActively participating in national screening programmesAble to manage their mental health & well-being needs</div>	Living longer, living better <p>Pacific families experience wellbeing and a high quality of life.</p>
<div><div>Economically Independent and Resilient With Financial Freedom</div></div> <div>Pacific families are:<ul style="list-style-type: none">Becoming economically independentEngaging with support to reduce their debtEngaged in a range of pathways that provide successful employment and business opportunities</div>	<div>Pacific families are:<ul style="list-style-type: none">Economically independent and resilientReducing their indebtednessOwning and operating their own businessesOn a pathway to home ownership</div>	Financial freedom <p>Pacific families are economically independent and resilient.</p>
<div><div>Community Connections: Leading & Caring For Our Families, Communities and Country</div></div> <div>Pacific families are:<ul style="list-style-type: none">Taking leadership in providing healthy and safe environments for their familiesStrong in their cultural capital and sense of belongingUnderstanding the diversity of our communitiesActively participating in their communities</div>	<div>Pacific families are:<ul style="list-style-type: none">Living in healthy, safe & violence-free environmentsStrong leaders, influential, foster resilience and empower each other to improve their livesAccept and advocate for the inclusion of our diversityInvolved and influential in their civic dutiesPrepared & resilient to face emergencies</div>	Community Connection <p>Pacific families are leading and connected to their families, communities and country.</p>
<div><div>Resilient And Responsive Families And Communities</div></div> <div>Pacific families are:<ul style="list-style-type: none">Knowledgeable about how to protect and prepare their familiesHave access to resources to support themselvesAre able to stay safe and access support when they need itAre connected to Whānau Ora support across the country</div>	<div>Pacific families:<ul style="list-style-type: none">Technically literate and support and nurture educational successare engaged in a range of pathways to employment and business opportunitiesare fully immunised and managing their health in partnership with health professionalsare prepared, connected and engaged to face emergencies</div>	Resilient and Responsive Pacific communities to emergencies <p>Pacific families and leaders are adaptive, connected and prepared</p>

13

The Results We Seek				
Succeeding In Education — Lifelong Learning	Healthy Lives — Living Longer, Living Better	Economically Independent And Resilient — Financial Freedom	Leading And Caring For Our Families, Communities And Country	Resilient & Responsive Communities To Emergencies
<ul style="list-style-type: none">• Increase in enrolment in quality early childhood education• Increase in Science, Technology, Engineering and Mathematics participation and achievement• Increase in NCEA level 2, 3 and University Entrance rates• Increase in tertiary, trades and training qualifications• Increase in family literacy	<ul style="list-style-type: none">• Increase in the proportion of Pacific non-smokers• Increase in families engaging in regular exercise• Increase in families making healthy eating choices• Increase in families accessing mental health and well-being support	<ul style="list-style-type: none">• Increased average income levels• Increased employment rates• Increased level of family savings• Reducing family debt• Increase in Pacific owned businesses• Increase in families on a pathway to home ownership	<ul style="list-style-type: none">• Reduction in the incidence of women, children and elders experiencing abuse• Reduction in the incidence of mental illness and addiction• Increase in number of Pacific people on local, regional, community and national and government boards• Increase in communities accepting and supporting diversity• Increase in Pacific people (voting and candidacy) in local regional and government elections• Increase in number of Pacific parents on school boards• Increase in Pacific families preparedness for unexpected events	<ul style="list-style-type: none">• Increase in Pacific families preparedness for unexpected events• Increase in Pacific communities preparedness for emergencies• Increase in Pacific families resilience



Snapshot of Success

The Difference We Are Making

202,065 PACIFIC INDIVIDUALS REACHED 60,177 in FY20/21	37,028 PACIFIC FAMILIES REACHED 12,467 in FY20/21	53% OF PACIFIC POPULATION OF NZ REACHED 16% in FY20/21	111,243 WELLBEING OUTCOMES ACHIEVED 10,247 in FY20/21	28,403 PACKAGES OF SUPPORT 10,648 in FY20/21
---	---	--	---	--



LIFELONG LEARNING	LIVING LONGER, LIVING BETTER	FINANCIAL FREEDOM	COMMUNITY CONNECTION	RESILIENT AND RESPONSIVE
2407 children now enrolled in ECE	1758 families now smokefree	3338 families reducing their debt	1619 families now connected to community	12% of Pacific Population supported during lockdown
61% Academy students achieving UE	6949 families with a health plan	2766 families on a pathway to increased income	1815 families with are participating in language and culture programmes	3964 individuals supported in self isolation
22% Academy students taking Level 3 science	446 individuals accessing mental health services	26 new business enterprises		228 individuals supported in managed isolation

80 families on a pathway to home ownership
--



Whānau Ora Stories of Impact

COVID-19 On-Going Support

Pasifika Futures injected additional funding to their partners who worked with community Foodbanks, churches and school hubs to provide welfare and education support for Pacific families struggling during the 2020 - 2021 Covid-19 lockdown periods.

The country went into lockdown for a week from Sunday 28 February to Saturday 6 March 2021 – Auckland at Alert Level 3 and the rest of the country at Alert Level 2 – after a cluster of community cases in Auckland tested positive for Covid-19.

Pasifika Futures supported seven food hubs, three church hubs and three school hubs to provide packages to Pacific families in need. More than 3,922 food and education packs were distributed to support 6,493 families, made up of 29,026 individuals.

The principal of Tamaki College in Auckland, Soana Pamaka, says that her school community appreciates the ongoing support.

"When we reach out and offer our support to our Pacific families, they like that somebody cares for them during this difficult time. It's a privilege to be a voice of kindness."

"The families appreciate the fact that we are listening, and we are providing a service to meet their needs."

Pamaka says that her staff called every family and household on their school roll to reach out and ensure that each person in their community was comfortable during the lockdown.

"What we found was that there was a lot of stress in the household, mainly there were too many people in the home and the young people were struggling because there was not enough personal space for them."

"Mothers, in particular, appreciated the phone call because it gave them an opportunity to speak to someone and express their feelings and have someone listen to them."

She says families will need to remain positive to navigate these uncertain times.

"We are all in this together. There is support and help available, you just need to ask for help and know where and who to ask. We are here for a reason."

The Fono and other Pasifika Futures partners including The Village Community Services Trust, Mt Wellington Integrated Health Care and South Seas Healthcare, mobilised their staff and resources immediately in preparation to support vulnerable families who needed urgent assistance.





New Etu Pasifika premises a cause for celebration

More than 250 people, including Pacific health leaders, government ministers, Etu Pasifika staff and families, gathered at the new premises on Tuam Street in Christchurch to celebrate the new clinic which was officially opened by the Minister for Pacific Peoples and Associate Minister of Health (Pacific), Hon Aupito Tofae Su'a William Sio.

Pasifika Futures partner, Etu Pasifika, was established in 2016 under the Pasifika Medical Association (PMA) Group of companies with a partnership with Canterbury District Health Board, after the previous Pacific health provider in Canterbury, could no longer operate.

PMA Chief Executive, Mrs Debbie Sorensen, spoke at the opening and acknowledged the many Pacific community leaders and original board members who passionately fought to have a health organisation dedicated to helping Pacific families in the Canterbury area.

The PMA Group has invested \$2 million into fitting out the new premises with savings that have accumulated over 25 years. The clinic offers a wide range of services, including primary care, mental health services, matua services and Covid-19 responsiveness and support packages.

"As always, out of the ashes something beautiful rises. When we talked to our families over the last two years, they told us that they want to come into a place that feels like home. They want to feel welcomed; to have people who speak their language, who understand them. They don't want to be a number or be pushed through a queue.

As we move forward, I hope that families will feel happy and welcomed", says Sorensen.

The new clinic is designed to ensure that Talanoa is a core component of engagement with families and its walls are adorned with 12 original artworks by Pacific artists.

PFL Chair Dr Kiki Maoate (ONZM, FRACS), spoke at the opening and says the clinic's central location makes it accessible to families and allows the Pacific community to have a strong presence in the city.

"Our community maybe thinking 'why are we sitting in the middle of Christchurch?' Because we need presence. This precinct is going to be the Pacific statement in Christchurch for the health sector. Look around the building, think to the future and help us with this journey. We have shown over the years that we can actually improve our outcomes. We have shown that the way we work is effective for our community", says Dr Maoate.

Other speakers included Chair of the Canterbury District Health Board, Sir John Hansen, who spoke about the partnership between the two organisations, and Hon Aupito Tofae Su'a William Sio.

Minister Sio acknowledged the staff and leaders of Etu Pasifika for their hard work.

"This beautiful facility will become a new home for our Pacific communities, accessing high quality, wellbeing support."





Kanorau programme – a partnership to improve digital inclusion of Pacific families

As part of the Government's strategy to give all New Zealanders the tools to participate in, contribute to and benefit from the digital world, Manaiaikalani Education Trust and Te Wānanga o Aotearoa have been offering free Kanorau Digital courses and recently partnered with Pasifika Futures and its vast network to provide digital training to Pacific families.

Pasifika Futures Director of Partnerships, Mr Craig Sionetuato, says the importance of having competent digital literacy, was evident during the Covid-19 lockdowns.

"The lockdowns gave us an insight into the importance of knowing how to use digital devices, like computers and cell phones, which were used to access essential services such as banking, grocery shopping and medication delivery."

"With Pacific families, it was important for them to stay connected to their churches and their families overseas, and the only way to do that was through Zoom or another similar online platform."

Mr Sionetuato says that individuals who do not have access or don't know how to use this technology are at a disadvantage.

"It's important for Pasifika Futures to be part of the Kanorau Digital programme because we want to give our people the confidence to use digital devices and show them that the internet is an important tool."

"The Kanorau Digital training supports our Whānau Ora education goals for our families".

The programme was initiated by Manaiaikalani Education Trust after a report by the Department of Internal Affairs found certain groups, such as the disabled, Māori and Pacific, were more likely to be digitally excluded and resulted in a feeling of isolation.

Kanorau (meaning many seeds) Digital is a free six-hour course completed in either one or two days, that teaches people how to navigate websites, use apps on mobile phones and manage online tasks such as sending emails, organising online calendars and use video calling.

Pasifika Futures partners from Auckland, Hamilton and Christchurch have completed the courses for their matua and other interested Pacific groups.

Business Development Manager at Te Wānanga o Aotearoa, Mr Leon Tepania, says their partnership with Pasifika Futures is integral because it allows his organisation to reach out and connect to Pacific families.

"One of the challenges that we found was the ability to connect to the communities who needed the training the most."

"What Pasifika Futures provides is access to a community where connections and relationships matter. This partnership is critical in providing the opportunity for the Pacific community to do this course. It not only benefits the individual but also their families."

Programme Results

The following details key achievements and indicators against the Pasifika Futures Whānau Ora Outcomes Framework and key performance indicators identified in our annual plan.



Outcome 1: Lifelong Learning

Intermediate outcome: Pacific families are achieving educational success, supporting and nurturing educational success and are technically literate.

Lifelong Learning Partners



Outputs in FY20/21





Outcome 3: Financial Freedom

Intermediate outcome: Pacific families are economically independent and resilient, reducing their debt, owning and operating businesses and on pathways to home ownership.

Financial Freedom Partners



Outputs in FY20/21



Short Term Outcomes	Indicator	Actual 2021	Target 2021	Actual 2020	Target 2020
Reducing Debt	Families Reducing Debt By 5% Or More	82% 3338	80%	84% 2721	80%
New Business Start-ups	New Businesses Established	26	10	45 ²	
Short Term Outcomes	Indicator	Actual 2021	Target 2021	Actual 2020	Target 2020
Families On A Pathway To Home Ownership	Families With A Financial Plan	56% 80	50%		
On Pathways To Employment And Business Opportunity	Families Are On A Pathway To Increased Income	61% 2766	60%	63% 2392	60%

²Cumulative result over 4 years



Outcome 4: Community Connection

Intermediate outcome: Pacific families are living in health, safe and violence free environments, are strong leaders, accept and advocate for diversity, are resilient.

Community Connection Partners



Outputs in FY20/21



Short Term Outcomes	Indicator	Actual 2021	Target 2021	Actual 2020	Target 2020
Positive connection to community	Families who were not connected are now connected	84% 1619	80%	83% 1311	80%
Outputs	Indicator	Actual 2021	Target 2021	Actual 2020	Target 2020
Participation in language and culture programmes	Families with a goal are participating in language and culture programmes	91% 1815	80%	92% 1660	80%



Outcome 5: Community Responsiveness & Resilience

Intermediate outcome: Pacific families are prepared, connected and engaged to face emergencies

Community Responsiveness & Resilience Partners

25

Covid-19 Partners

Outputs in FY20/21



8,616

Families engaged



6,278

New Families Reached



125,558

Masks distributed



285,537

Total social media footprint

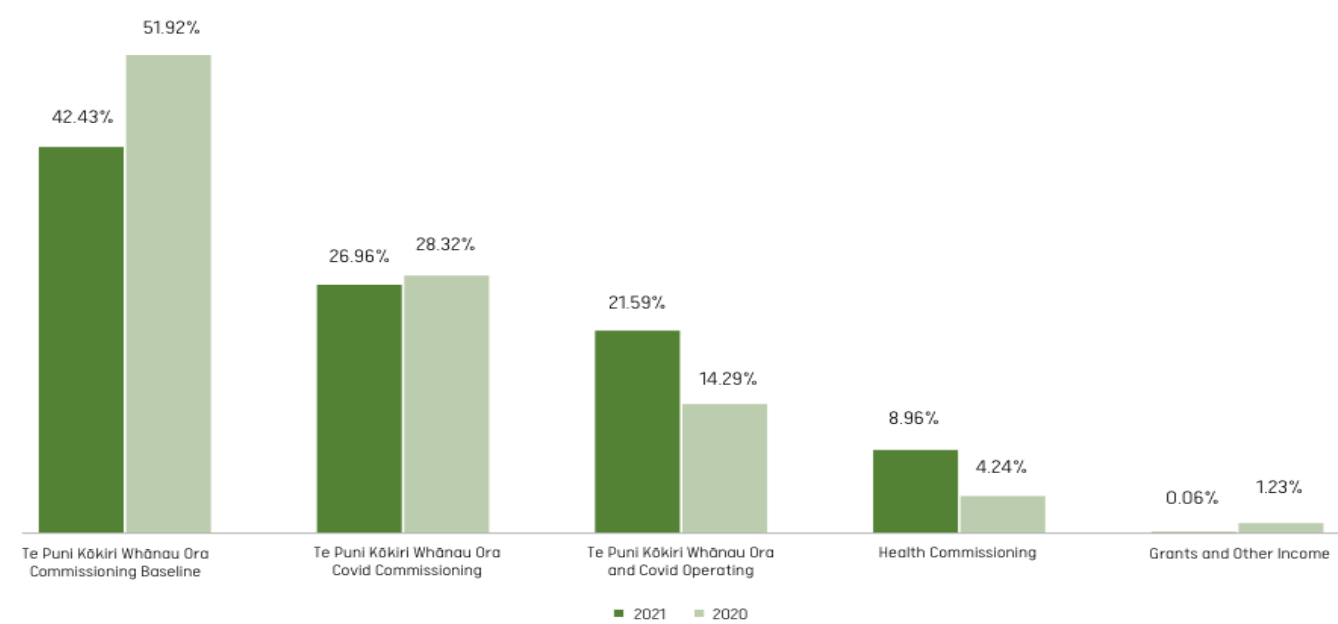
Short Term Outcomes	Indicator	Actual 2021	Target 2021	Actual 2020	Target 2020
Pacific families have access to resources to support themselves	Pacific population supported in lockdown	12%		19%	
Pacific families have access to resources to support themselves	Pacific individuals supported in self isolation	3964		20	
	Pacific individuals supported in managed isolation	228		0	
Outputs	Indicator	Actual 2021	Target 2021	Actual 2020	Target 2020
Packages of support distributed during lockdown	Packages of support	10,648	11,406	17,755	



Funds Source & Destination

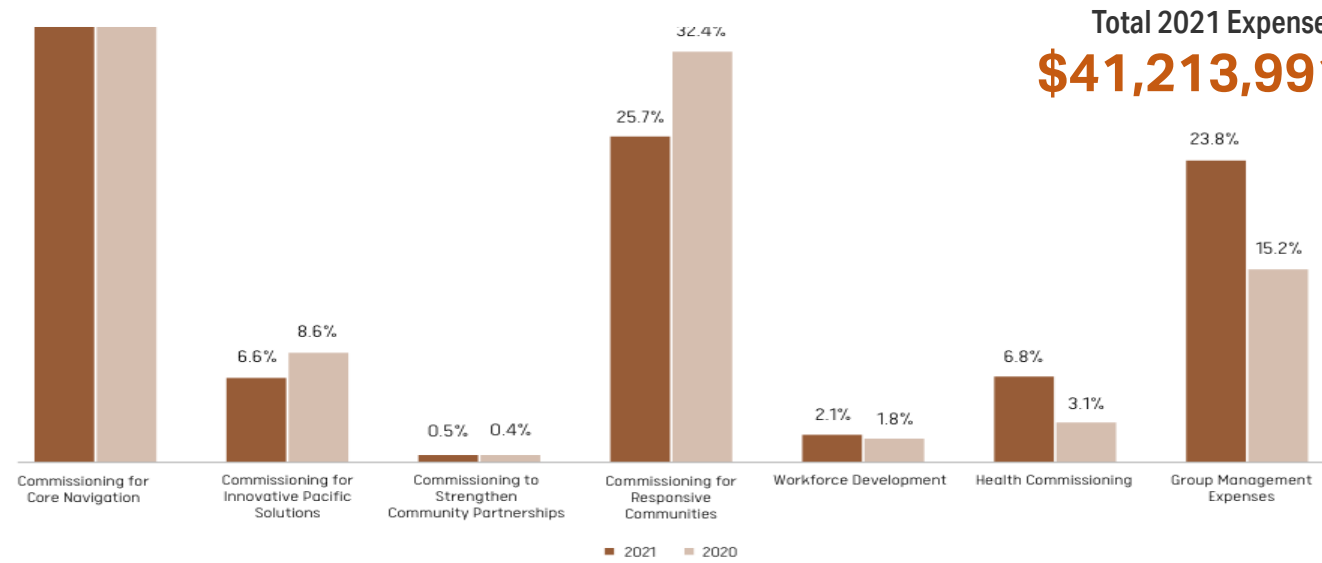
Where the Money Came From:

Total 2021 Revenue:
\$41,315,766



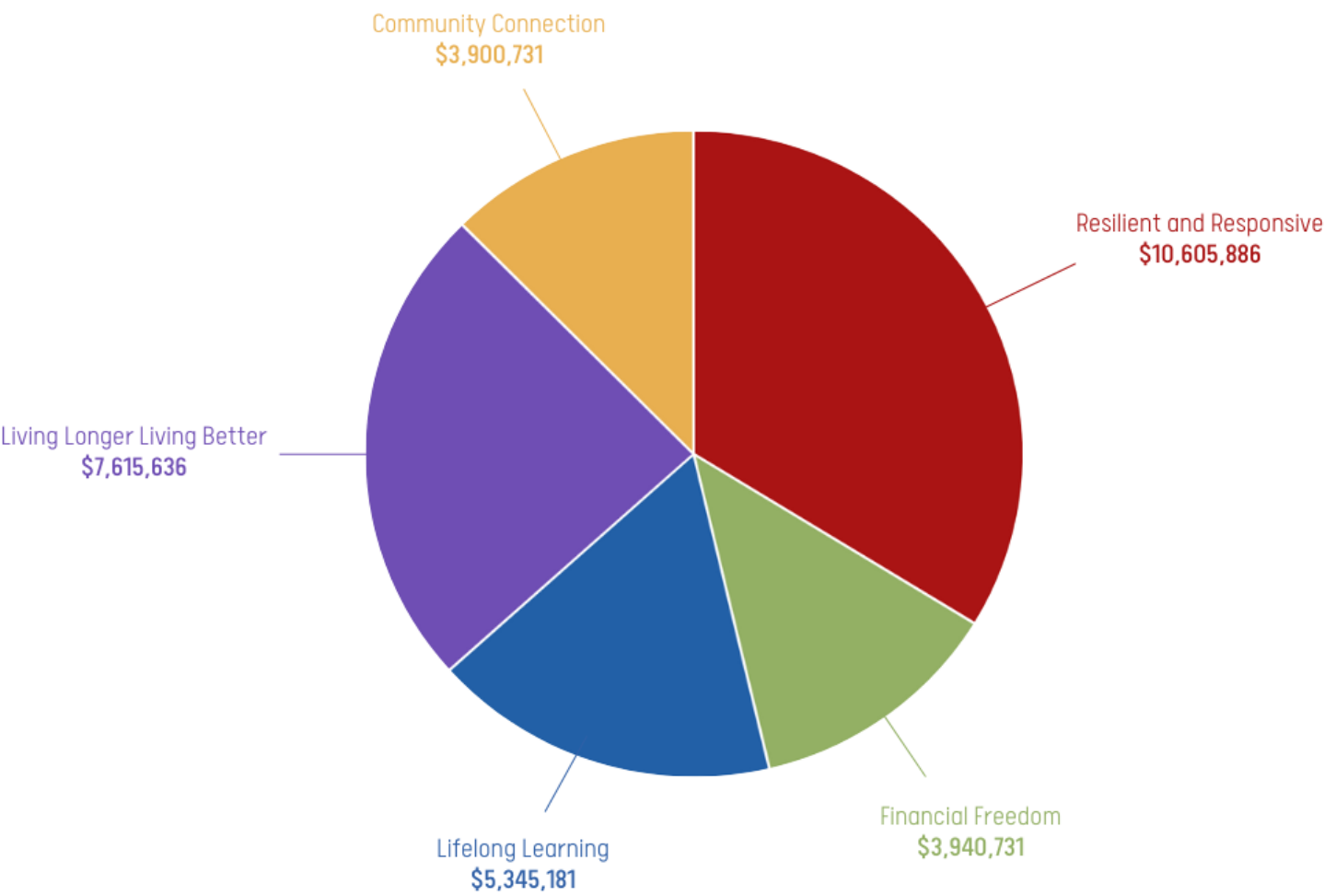
Where the Money Went:

Total 2021 Expenses:
\$41,213,991



Programme Expenses

Whānau Ora 2021 Expenses For Year Ended 30 June 2021:





**Pasifika Futures Ltd
is a Whānau Ora
Commissioning Agency**

Pasifika Futures Ltd.
is a Limited Liability
Charitable Company owned
by the Pasifika Medical Association

Tel: +64 9 250 5761
Web: www.pasifikafutures.co.nz
Email: info@pasifikafutures.co.nz
P.O. Box 11445,
Ellerslie, Auckland 1060

Auckland
195L Main Highway,
Ellerslie, Auckland, NZ

Wellington
Level 2, Gleneagles Building,
69-71 The Terrace,
Wellington 6011, NZ