

Pasifika Futures Ltd

ANNUAL REPORT 2021/22





Pasifika Futures Ltd

Auckland:
Building 4, 195 Main Highway,
Ellerslie, Auckland

Hamilton:
Level 4, 24 Garden Place,
Hamilton Central, Hamilton
3204

Wellington:
Level 2, Gleneagles Building,
69-71 The Terrace,
Wellington 6011, NZ

Christchurch:
(Etu Pasifika) 31 Tuam Street
Christchurch Central City
Christchurch 8011

Tel: +64 9 250 5761

Fax: +64 9 250 5768

www.pasifikafutures.co.nz





Table of Contents

06
Introduction

Kia Orana From The Chairman Of The Board	06
Pasifika Futures Ltd Board Of Directors	08
Malo e lelei From The Chief Executive	10

12
About Pasifika
Futures

1. About Pasifika Futures	12
What We Do	13
Our Strategy	14
Outcomes Frameworks	15

20
Empowering
Pacific Families

2. Empowering Pacific Families	17
How We Work	17
Making A Difference	18
Looking Ahead	19
Supporting Families	21
Snapshot of Success	23
Community Response And Resilience	24
Outcomes	34
Ngalu Fānifo	39
Spotlight On Partners	44
Pathways To Success	46

40
Our Results

3. Our Results	40
Funds Source & Destinations	50
Programming Expenses	51
4. Our Organisation	56
Financials	57



Dr Kiki Maoate, ONZM, FRACS
Chair, Pasifika Futures Ltd

Kia Orana from the Chairman of the Board

We are delighted to present the eighth Annual Report for Pasifika Futures, the Whānau Ora Commissioning Agency for Pacific families.

The past few years have been an exceptionally challenging time for New Zealand due to the turmoil and disruption to everyday life brought about by the COVID-19 pandemic. Pacific families have borne a disproportionate share of the impact of COVID-19 in terms of illness, loss and financial stress and pressure.

We are pleased that through our commissioning work we have been able to assist many thousands of Pacific families across Aotearoa New Zealand to remain resilient in the face of these challenges.

Whānau Ora's value to families and support during the COVID-19 epidemic has demonstrated the value of being flexible, self-determining and active partners with families. Pasifika Futures and our partner network has been a trusted source of support and information for Pacific communities during the pandemic, working tirelessly to serve the most vulnerable Pacific families.

The scale of our response has been unprecedented. Our nationwide coverage has enabled us to reach families all over the country in all walks of life. Throughout the pandemic we have supported over 60,000 Pacific families, totalling over 300,000 individuals – that amounts 85% of the Pacific population. We have delivered nearly 109,000 Covid Support Packages, working with 45 centres and trusted partners, from Kaitiāia to Invercargill.

Protecting our communities against COVID-19 itself has, of course, been a top priority. Working as a trusted partner with government, Pasifika Futures has coordinated regional vaccination roll outs, even sending 'flying squads' to communities in Queenstown, Nelson and Northland.

We also provided more than \$2m worth of masks to families and allocated \$47m in COVID support funding to families. More than 10,000 individuals were supported through COVID self-isolation in the past year.

None of this would be possible without our partner organisations who bring extensive skills, knowledge, networks and unstinting dedication to their professional services. They have stepped up to the many challenges brought about by COVID – lockdowns, loss of jobs and security – and ensured our communities have been well supported throughout. They have

gone above and beyond working long hours. I thank them for their selfless service and sacrifice.

Meanwhile, our other work with partners to build the capability and capacity of Pacific families and help them achieve their aspirations in health, housing, education, training and economic development has continued.

As this report shows, Pasifika Futures continues to make a significant and measurable difference to the lives of many families. A quick glance through this document will confirm that we have met and, in many cases, substantially exceeded our KPIs. That this has happened during one of the worst health crises to affect the country is nothing short of remarkable. I am sure when we look back on these times, we will be forever grateful to all our partners for their commitment, dedication and service at a time of great need.

I would like to acknowledge the work of my fellow Directors – Dr Francis Agnew MNZM FRANZGP FACHAM, La'auli Sir Michael Jones KNZM MNZN and Dr Siniva Sinclair FAFPHM MPF and Soana Pamaka BA – during this period. The leadership, strategic guidance and compassion they provide has enabled this organisation to prosper and reach ever more families, despite the pandemic.

I would also like to thank Mrs Debbie Sorensen, her executive team and staff for continuing to serve our communities, families, and stakeholders with integrity and diligence. Your focused and responsible management of the organisation is crucial to the success of Pasifika Futures.

As Whānau Ora goes from strength to strength, I would also like to acknowledge the partnership we have enjoyed with Hon Peeni Henare, the Minister of Whānau Ora, who is always clear in his expectations and ready to respond to the challenges Pacific families have faced during the pandemic. We also appreciate the support of Hon Minister

Aupito Tofae S'ua Willian Sio, Minister of Pacific Peoples and other Pacific leaders in Cabinet and Parliament.

The recent lifting of COVID restrictions has offered us all a much-needed opportunity to reconnect with friends, families, community and Pacific neighbours. I look forward to building on the incredible work that has happened over the past few years. It has demonstrated what can be achieved when we all work together to enhance the wellbeing of Pacific families.

It has been our honour and privilege to stand alongside Pacific families during some of the most testing times in our history. We look forward to the year ahead with a renewed sense of purpose and optimism.

Kia Manuia

Pasifika Futures Ltd Board of Directors



Dr Tearikivao Maoate ONZM, FRACS
Chair • Cook Island

Dr Tearikivao (Kiki) Maoate is a Paediatric Surgeon and Urologist based in Christchurch. He is a well-respected leader in the Cook Island community and in the health and education sector in both New Zealand and the region. He was awarded an Officer of the New Zealand Order of Merit in 2014 for his dedication and commitment to Pacific Health. In 2015, he was awarded a Commander Royal Crown of Tonga by His Majesty Tupou VI for services to the people of Tonga in health. Kiki is a Fellow of the Royal Australasian College of Surgeons and is the Clinical Director of the Pacific Island Programme. He is Associate Dean, Pacific Health, University of Otago based on Christchurch. Dr Maoate is the Chairperson of Pasifika Medical Association Group.



Dr Francis Agnew MNZM, FRANZCP, FACHAM
Director • Cook Island

Dr Francis Agnew is a pioneer in the development of Pacific mental health services in New Zealand and the wider Pacific region. In 2010, he was awarded a Member of the New Zealand Order of Merit for services to the Pacific community in Mental health.

Francis has been involved in delivering mental health services in the Cook Islands and Samoa and is recognised as an expert in this area. He has provided leadership in the development of Pacific mental health and addiction services in New Zealand and has served on many Government reviews, committees and task forces.

He has a distinguished record of providing voluntary services to the community and actively mentors evolving Pacific clinicians in his area of speciality. Francis is a Fellow of the Royal Australian and New Zealand College of Psychiatrists and a Fellow of the Chapter of Addiction Medicine. He has served as the zonal representative (Australia, New Zealand and the Pacific) for the World Psychiatric Association. Dr Agnew is a Director for Pasifika Medical Association Group.



Dr Siniva Sinclair FAFPHM, MPH
Director • Samoan

Dr Siniva Sinclair was born and raised in Papua New Guinea. Siniva is a fellow of the Australasian Faculty of Public Health Medicine and has completed a Masters in Public Health. She has worked in Samoa as a Specialist Public Health Physician and has worked as a consultant for the World Health Organisation in the Philippines, China, Cambodia, Vietnam, the Solomon Islands and Kiribati. She has worked for UNICEF in Fiji and the Secretariat of the Pacific Community in Samoa, New Caledonia and Fiji. In 2013, she completed the Global Health Delivery summer Intensive Program at Harvard University. In 2017, she was selected to attend the Harvard Business School Women's Leadership Summit. Dr Sinclair is a Director of Pasifika Medical Association Membership Ltd.



La'auli Sir Michael Jones KMNZ, MNZM
Director • Samoan

La'auli Sir Michael Jones has a wealth of public and private sector experience having worked in tertiary education and Pacific economic development. He is currently Strategic Development Manager at Matson South Pacific, a regional shipping company. La'auli is passionate about economic and social development for Pacific people both in the Pacific and in New Zealand. Much of his time is spent with young people and in community empowerment. He is Chair of the Village Community Trust and a Trustee of Pacific Peoples Advancement Trust. In 2003, he was inducted into the International Rugby Hall of Fame recognising his considerable commitment and achievements in rugby as an All Black and as a coach and player for Samoa. In 2017, he was invested as a Knight New Zealand Order of Merit.



Mrs Soana Pamaka BA, Akl Dip Tchg ACE
Director • Tongan

Soana Akolotu Pamaka is an educational leader, serving the community of Glen Innes for the past 30 years at Tamaki College. Educated at Tonga High School and the University of Auckland, Soana became New Zealand's first Tongan secondary school principal in 2006.

Soana is passionate about enabling the community through educational opportunities and success, and supporting educational innovation and partnerships. Soana has extensive governance experience, including as a trustee on the ASB Community Trust, and Directorships on the Teach First New Zealand Board, Tamaki Redevelopment Company and Te Papa Tongarewa – The Museum of New Zealand. Soana Pamaka was awarded a Blake Leadership Award in 2018.



**Mrs Debbie Sorensen, C.C.T
CMInstD, NZRPN**
Chief Executive Officer

Malo e laumalie From the Chief Executive

This publication shows the continued progress of Pasifika Futures – the Whānau Ora Commissioning Agency for Pacific families – and the extensive work that our 60 partners have undertaken to support and sustain families over the past year.

It was another challenging year, as New Zealand continued to grapple with the ongoing impact of the global COVID-19 pandemic and associated health risks, border closures, lockdowns, labour shortages, supply chain issues and rising costs of food and services.

Our response has been twofold – to help Pacific families through their immediate health and wellbeing challenges, whilst also continuing to build pathways and connections for long-term success and prosperity.

The old adage – ‘let no good crisis go to waste’ – has turned out to be very apt. As the pandemic unfolded, Pasifika Futures and its partners have mobilised, supported and reached more Pacific families than ever before. Many of these families have not previously participated in Whānau Ora. Out of adversity has come opportunity.

In the past year alone, Pasifika Futures has connected with 202,000 individuals and reached more than 41,000 families, working with over half the New Zealand Pacific population. We have provided nearly 81,000 packages of support and supported 41% of the Pacific population during lockdown.

Progress in each of our key areas – lifelong learning, living longer, living better, financial freedom, community connection and community resilience – has been equally impressive and built substantially on the efforts of previous years, as the diagrams in this publication clearly illustrate.

Behind these impressive statistics lies the best story of all – the determination and hard work of families across the country. People whose lives have been transformed for the better thanks to new qualifications, jobs, business start-ups, increased incomes and better access to Pacific-focused education, health, mental health and childcare services. That’s the human truth of Whānau Ora. It’s a way of working with Pacific families that delivers tangible results at community level.

We remain committed to being accountable and transparent in our dealings, delivering best practice in our management, and being a responsible steward of government funding to achieve improved outcomes for Pacific families.

In terms of financial performance, in 2021/22, we completed our eighth year of funding, administering an investment portfolio of \$64 million. In the current financial year we expended \$50 million of Whānau Ora Commissioning funding. Our operating overheads remain at 20% of our total funding and we received an unmodified audit report.

We continue to ensure this funding is well targeted and reaches families in high need, or can leverage wider improvements in the lives of Pacific families.

Year on year, the cumulative impact of our work is growing. Since 2014, Pasifika Futures has achieved over 132,000 wellbeing outcomes and reached more than 86% of the Pacific population in New Zealand. A truly remarkable result in such a short period of time.

Whānau Ora has provided ‘safe harbour’ for many Pacific families during extremely turbulent times. We are immensely proud of the work of our Pacific partners to help them navigate these ‘stormy waters’. We are also humbled by the strength and resilience displayed by our Pacific families and their willingness to help others in their community. Our resilience and responsiveness during the COVID health emergency has been one of the great success stories of New Zealand’s fight against COVID.

I would like to thank the Pasifika Futures directors and Chair Dr. Maoate, for their calm and guidance during a time of great upheaval. That has been a source of inspiration and strength in all our undertakings.

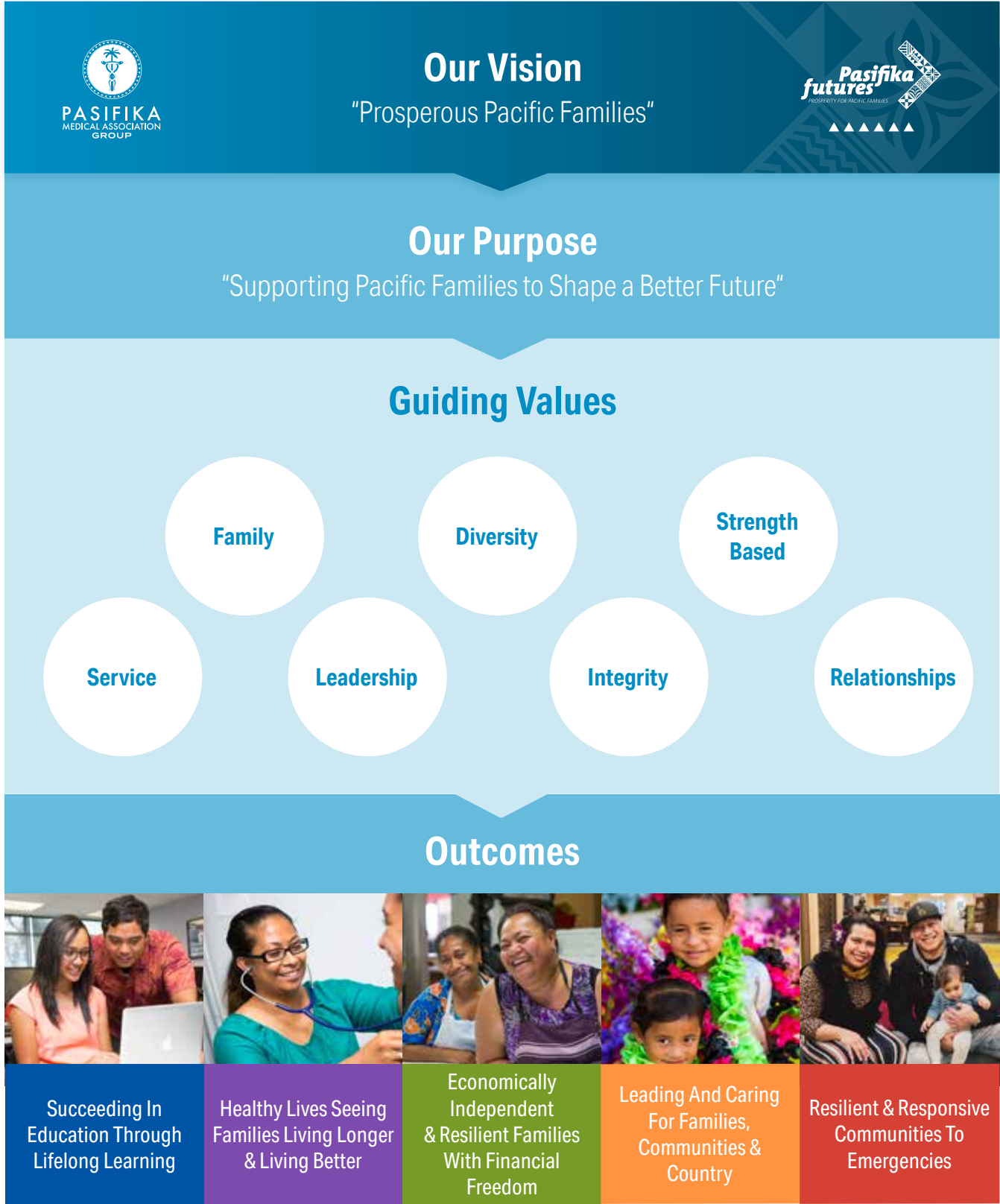
We have emerged from the pandemic stronger and more determined to build on what has been achieved over the past eight years. Our vision and purpose are clear, our mission more important than ever. Let us now move forward with confidence to create the opportunities and prosperity our communities deserve.

Faka’apa’apa atu

1. About Pasifika Futures



Our Vision And Purpose



What We Do

Pasifika Futures is a Whānau Ora Commissioning Agency. We work with regionally based partners to build the capability and capacity of Pacific families. Pasifika Futures supports Pacific families to achieve their aspirations in health, housing, education, training and economic development.



Economically Independent and Resilient

We work with Pacific families to build a pathway to **financial freedom**, through reducing debt, increasing income and savings, gaining and strengthening employment and owning their own homes.



Succeeding in Education

We build **lifelong learning** with Pacific families, through enrolling in early childhood education, achieving at school, helping families support their children's development, supporting school leavers into education, employment or training, and gaining tertiary education qualifications.



Healthy Lives

We work alongside Pacific families to **live longer and better lives** through supporting Pacific families in healthy eating and exercise, immunisation and screening, healthy homes, primary care access, stopping smoking, managing long-term health conditions, and supporting people with disabilities to achieve their aspirations and access services.



Leadership, Culture and Community Connections

We build on the **strengths of Pacific communities** to live in **safe and supported environments**, through fostering Pacific languages, strengthening community connections and participation, resolving conflict non-violently, and ensuring elderly people are safe and connected.



Resilient & Responsive Communities To Emergencies

Pacific families and leaders are adaptive, connected and prepared.



Our Strategy



Principles

Family Co-Design

Access To Support Anyone In Aotearoa

Pacific Solutions To Pacific Challenges

Culturally Anchored

How We Deliver

Through Commissioning Impactful Programmes

Families design, develop & deploy solutions supported by Core navigation

Commissioning Pacific solutions to Pacific challenges through innovation

Strengthening community partnerships to enhance community well-being

Strengthening community resilience to respond to challenging times

Our Organisational Support

Through a Focus on Knowledge & Evidence

Effective governance grounded in Pacific methodologies delivered in a contemporary context

Excellent business and management practices reflecting organisational values and principles

Pacific workforce who excel in Pacific language and cultural capacity and capability with superb technical skill

Strategic deployment of our resources to enhance reach and impact

Outcomes



Succeeding In Education Through Lifelong Learning

Healthy Lives Seeing Families Living Longer & Living Better

Economically Independent & Resilient Families With Financial Freedom

Leading And Caring For Families, Communities & Country

Resilient & Responsive Communities To Emergencies

16



Short Term
Participation (1-4 years)

Medium Term
Engagement (5-9 years)

Long Term
Achievement (10 years +)

 <div>Succeeding in Education Through Lifelong Learning</div>	Pacific families are: <ul style="list-style-type: none">Well prepared for schoolingIdentifying their educational pathwaysUnderstanding how to support and nurture educational success	Pacific families are: <ul style="list-style-type: none">Achieving educational successSupporting and nurturing educational successTechnically literate	Lifelong learning <p>Pacific families are achieving success across all educational pathways.</p>
 <div>Healthy Lives: Seeing Families Living Longer and Living Better</div>	Pacific families are: <ul style="list-style-type: none">Embarking on the journey to live a smoke-free and healthy lifestylePartnering with health professionals in the management of their healthFully immunisedProgressing towards achieving their aspirations for those living with disabilities	Pacific families are: <ul style="list-style-type: none">Smoke freePhysically active and making healthy eating choicesManaging their health in partnership with health professionalsActively participating in national screening programmesAble to manage their mental health & well-being needs	Living longer, living better <p>Pacific families experience wellbeing and a high quality of life.</p>
 <div>Economically Independent and Resilient With Financial Freedom</div>	Pacific families are: <ul style="list-style-type: none">Becoming economically independentEngaging with support to reduce their debtEngaged in a range of pathways that provide successful employment and business opportunities	Pacific families are: <ul style="list-style-type: none">Economically independent and resilientReducing their indebtednessOwning and operating their own businessesOn a pathway to home ownership	Financial freedom <p>Pacific families are economically independent and resilient.</p>
 <div>Community Connections: Leading & Caring For Our Families, Communities and Country</div>	Pacific families are: <ul style="list-style-type: none">Taking leadership in providing healthy and safe environments for their familiesStrong in their cultural capital and sense of belongingUnderstanding the diversity of our communitiesActively participating in their communities	Pacific families are: <ul style="list-style-type: none">Living in healthy, safe & violence-free environmentsStrong leaders, influential, foster resilience and empower each other to improve their livesAccept and advocate for the inclusion of our diversityInvolved and influential in their civic dutiesPrepared & resilient to face emergencies	Community Connection <p>Pacific families are leading and connected to their families, communities and country.</p>
 <div>Resilient And Responsive Families And Communities</div>	Pacific families are: <ul style="list-style-type: none">Knowledgeable about how to protect and prepare their familiesHave access to resources to support themselvesAre able to stay safe and access support when they need itAre connected to Whānau Ora support across the country	Pacific families: <ul style="list-style-type: none">Technically literate and support and nurture educational successare engaged in a range of pathways to employment and business opportunitiesare fully immunised and managing their health in partnership with health professionalsare prepared, connected and engaged to face emergencies	Resilient and Responsive Pacific communities to emergencies <p>Pacific families and leaders are adaptive, connected and prepared</p>

17

The Results We Seek			
Succeeding In Education — Lifelong Learning	Healthy Lives — Living Longer, Living Better	Economically Independent And Resilient — Financial Freedom	Leading And Caring For Our Families, Communities And Country
<ul style="list-style-type: none">• Increase in NCEA level 2, 3 and University Entrance rates• Increase in tertiary, trades and training qualifications• Increase in family literacy• Increase in Science, Technology, Engineering and Mathematics participation and achievement• Increase in enrolment in quality early childhood education	<ul style="list-style-type: none">• Increase in the proportion of Pacific non-smokers• Increase in families engaging in regular exercise• Increase in families making healthy eating choices	<ul style="list-style-type: none">• Increased average income levels• Increased employment rates• Increased level of family savings• Reducing family debt• Increase in Pacific owned businesses	<ul style="list-style-type: none">• Reduction in the incidence of women, children and elders experiencing abuse• Reduction in the incidence of mental illness and addiction• Increase in number of Pacific people on local, regional, community and national and government boards• Increase in communities accepting and supporting diversity• Increase in Pacific people (voting and candidacy) in local regional and government elections• Increase in number of Pacific parents on school boards



2. Empowering Pacific Families





How We Work

Our approach

Pasifika Futures is the only Whānau Ora Commissioning Agency for Pacific families. We are strength based, deeply anchored in Pacific values and work to support Pacific families design tailored solutions to achieve better futures. Since we began, we have built a network of 60 commissioned partners around Aotearoa New Zealand. We are inspired by the knowledge, skills and connections our partners have in Pacific communities. Nearly 330,000 individuals and 61,000 families in communities across Aotearoa have already benefited from Whānau Ora, achieving 132,000 wellbeing outcomes. 61% of the Pacific population was supported during lockdown.

Our Commissioning Partners

Our navigators work through our partners, who we commission in the following areas:

- **Core Navigation:** Enabling Families to design their own solutions to achieve their dreams and aspirations.
- **Commissioning for Innovation:** Pacific solutions to Pacific challenges through innovative approaches.
- **Commissioning for Communities:** Strengthening community partnerships to enhance community wellbeing.
- **Commissioning for community resilience:** Strengthening community resilience to respond to adverse events, emergencies and disasters.



Making A Difference

We increase the impact with families by:

Supporting and investing in:

- culturally anchored and strength- based family solutions
- enabling families to develop goals that matter to them
- investing in families across the five domains to build resilience and responsiveness
- community connections, language, and strengthening cultural identity
- innovative solutions that foster community leadership and development.

We increase the impact with partners by:

- partnerships, building trust and fostering collaboration
- culturally anchored approaches to lift Pacific values and identity
- partners to measure the impact they make
- partners to strengthen and build outstanding Pacific leaders
- navigators, health coaches, and services to support best practice and optimal outcomes .



Looking Ahead

As we look ahead to 2023 and beyond, Pasifika Futures will support Pacific families to thrive in what we hope will be a time of renewal and opportunity in a post-COVID world.

We will work alongside our partners with optimism for the future on our priorities for 2022/23:

- ▶ Deepening our impact across the five key domains
- ▶ Strengthening access to integrated primary mental health
- ▶ Deepening relationships and support in the regions
- ▶ Strengthening family and community connections
- ▶ Strengthening the resilience and resolve of families and communities

We will continue to develop our collaborative partnership with our commissioning partners and invest in family aspirations, and co-design innovative solutions to support families.

Navigators remain the foundation of our work and we will work with partners to build their capability and impact. We will continue to gather and analyse data that reveals both our impact and learning for future development and improvement, and work collaboratively to refine key performance measures and data collection so we can actively monitor how we are achieving the changes we seek.

We look forward to Pacific families achieving their aspirations, enjoying equitable health and social outcomes and living prosperous lives.

Commissioning Activities 2021/22 Core Commissioning

Core commissioning involves working with partners to support Pacific families across New Zealand achieve their dreams and aspirations by improving their family outcomes.

The intention is that regardless of where a Pacific family lives, they are able to access Whānau Ora support

services. Core Commissioning employs a navigation model where families design and deploy their own solutions, Every family develops a family plan and strives to achieve their education, health and wellbeing, financial and home ownership and cultural, leadership and language goals. Funding is allocated directly to family plans, where families are invested in to achieve their goals and are connected to the resources they need to succeed.

In 2021/22, we worked with the following core partners.

Northland	The Northland Pacific Islands Charitable Trust
Auckland	West Fono Health Trust
	Aotearoa Tongan Health Workers Association
	Pacific Island Homecare Services Trust
	Pacific Island Homecare Services Trust - F'ine
	The South Seas Health Care Trust
	Community Approach Trust
	Etu Pasifika Auckland
	Fonua Ola Network
	F'INE Pasifika Aotearoa Ltd
Midlands	Tongan Health Society
	The Village Community Services Trust Board
	K'Aute Pasifika trust
	Rotorua Pacific Islands Development Charitable Trust
	Pacific Islanders Community Trust, Gisborne
	Pacific Island Community (Tauranga) Trust
	South Waikato Pacific Islands Community Services Trust
	Kainga Pasifika Services Trust (Hawkes Bay)
	Papaioea Pasifika Community Trust (Palmerston North)
Wellington	Taeao Manino Trust
	He Whānau Manaaki o Tararua Free Kindergarten Association Incorporated
	Pacific Health Plus
	Wellington Leaders Council Trust
South Island	Etu Pasifika Limited
	Pacific Trust Otago
	Marlborough Pacific Trust
	Nelson Tasman Pasifika Community Trust
	Pacific Island Advisory Charitable Trust
	Fale Pasifika O Aoraki Trust Society Incorporated

Commissioning For Communities

Commissioning for Communities enables community organisations to support Pacific families.

This commissioning enhances community wellbeing, cultural identity, and strengthens languages and community pride.

COMMISSIONING FOR COMMUNITIES
Auckland
Fotumalama Aoga Amata Preschool
Taulanga U
Te Maevanui O Aotearoa Charitable Trust
Tongan Youth Trust
Tuvalu Auckland Community Trust
Tupumagaia A Niue Trust
Midlands
Solomon Islands Society of Waikato Inc.
Vaimoana Pasifika Charitable Trust
Wellington
Atafu Tokelau Community Group Inc.
Vinepa Trust
South Island
Fono Faufautua Trust
Kuki Learning
Tagata Atu Motu

Commissioning For Innovation

Innovation programmes involve working with partners for Innovative Pacific solutions to Pacific challenges.

This commissioning includes investing in the education pipeline, building health resilience and wellbeing, strengthening access to mental health care, digital literacy and community and business development using Whānau Ora.

INNOVATION PARTNERS
Auckland
Cook Island Development Agency (CIDANZ)
Otago College Trust Foundation
Tamaki College Educational Trust
Oceania Career Academy Ltd
University of Auckland
The Fono (Ngalu Fanifo)
South Island
Etu Pasifika (Ngalu Fanifo)
National Partners
Sporting Strategy
Manaia Kalani Education Trust



Supporting Families

Pasifika Futures has supported Pacific families and communities in a host of ways throughout the pandemic. Here are a few examples from various communities around the country.

"Malo he koe'uhi mau si'i puke kotoa, 'ikai lava 'alu 'o ngaue. Ka ko 'eni mau fiefia si'i mai vausia ke fakatau'aki 'emau sopingi" (Thank you since we are all sick, unable to go to work. But we are happy to receive the voucher to purchase our shopping with). **Tongan Family supported by Pacific Islanders Community Trust Gisborne**

"Kia Orana, on behalf of my family, I would like to thank you all for your kind gift being the 'Food Package' that we received. There were 6 out of 8 of us in our family that tested positive with covid. The food was well received & enjoyed, Thank you once again. Meitaki atupaka". Family supported by **Papaioea Pasifika Community Trust (Palmerston North)**

"Being in a job for less than a month, I was not entitled for any sick leave. My family went into isolation for a week because a family member tested positive for Covid. The support my family received lifted the burden off our shoulders. It helped cover loss of family income as a result of the isolation". **Family supported by Solomon Islands Society of Waikato Incorporated**

"One family – Tongan, was so happy that kids ran out and shook my hand. I was really surprised. Moments like that are rare and to see the children so happy makes our work of helping our people most satisfying and in a way a blessing to these families and to all who have made it possible for us to help our people in their time of need."
Covid Response Partner Papaioea Pasifika Community Trust (Palmerston North)

"Aue...our cup truly runneth over!! Was overcome with emotion after the delivery and shed a few happy tears... cos as you rightly put it yesterday the struggle is real for everybody. Thank you so much for the 'generous' pack for our growing mokopuna & whanau. Plz extend our gratitude to the hands that prepared this 'generous' support pack'.
Family supported by South Waikato Pacific Islands Community Services Trust

"The Pasifika Fund, has now provided my boys 2 sets of new Winter uniform, as they look forward to go to school without being cold. We also received a food parcel that could last my family for a long time. We have been blessed and overwhelmed and thank De la Salle teachers, social workers as well as the PFF for helping my family. Dear De La Salle Community/Pasifika Futures Fund, may God bless you all with your work. You are amazing, I would not know what to do."
Faafetai tele lava!". Family Supported by De La Salle





Snapshot of Success

The Difference We Are Making
PFL Results Financial Year 21/22

202,258 PACIFIC INDIVIDUALS REACHED 328,947 cumulative	41,635 PACIFIC FAMILIES REACHED 61,659 cumulative	53% OF PACIFIC POPULATION OF NZ REACHED 86% cumulative	53,436 WELL-BEING OUTCOMES ACHIEVED 132,526 cumulative	80,734 PACKAGES OF SUPPORT 108,632 cumulative
--	---	--	--	---



LIFELONG LEARNING	LIVING LONGER, LIVING BETTER	FINANCIAL FREEDOM	COMMUNITY CONNECTION	RESILIENT AND RESPONSIVE
1,015 Children Now Enrolled In ECE 2,847 cumulative	801 Families Now Smoke Free 2,176 cumulative	1,831 Families Reducing Their Debt 4,204 cumulative	767 Families Now Connected To Community 1,968 cumulative	41% Of Pacific Population Supported During Lockdown 61% cumulative
65% Academy Students Achieving UE	2,871 Families With A Health Plan 8,204 cumulative	1,183 Families On A Pathway To Increased Income 3,287 cumulative	729 Families Are Participating In Language And Culture Programmes 2,087 cumulative	10,352 Individuals Supported In Self Isolation 14,316 cumulative
21% Academy Students Taking Level 3 Science	2,484 Individuals Accessing Mental Health Services 2,770 cumulative	12 New Business Enterprises 38 cumulative		750 Individuals Supported In Managed Isolation 970 cumulative

146 Families On A Pathway To Home Ownership 205 cumulative
--



Community Response and Resilience to COVID-19

COVID-19 significantly impacted Pacific families in the last year. The 2021 Delta outbreak resulted in New Zealand's longest lockdown and 15 weeks of severe restrictions for families living in Auckland. By 23 January 2022, the infectious Omicron variant spread throughout the community resulting in high rates of Pacific families contracting Omicron and requiring hospitalisation. PFLs network of Covid response partners have distributed **80,374 packages to 42,906 families (and 229,430 individuals)** in this financial year. This support included:

- ▶ **29,228 packages distributed to 9,191 families (46,700 individuals)**
- ▶ **2,510 families (3,996 individuals) were supported in isolation, with 14,033 medical consultations and 1,897 mental health consultations**

- ▶ **We responded to 30,249 contacts through our call centre**
- ▶ **We provided 3,666 vaccination doses including 498 to children**
- ▶ **We also distributed 1,005,975 face masks, 439,316 RATS, and Trained 288 registered workers RATS**

Since March 2020, when COVID-19 emerged in New Zealand, we have supported 14,316 individuals in self-isolation and 970 individuals in managed isolation and distributed a total of 108,632 packages of support during the COVID-19 outbreaks.

COVID -19 RESPONSE PARTNERS

Northland

Northland Pacific islands Charitable Trust

Auckland

West Fono Health Trust
The Village Community Services Trist Board
Fonua Ola Network
Etu Pasifika Auckland
Tongan health Society Inc.
Otahuhu College Trust Foundation
Tamaki College Educational Trust
Oceania Career Academy Limited
Community Approach Trust
Aotearoa Tongan Health Workers Association
Pacific Island Homecare Services Trust
F'INE Pasifika Aotearoa Limited
The South Seas Healthcare Trust
Cook Islands Development Agency
Pacific Advance Secondary School
McAuley High School
De La Salle College
University of Auckland
Pacific Auckland Regional Coordination Hub (PaRCH)

Midlands

K'Aute Pasifika Trust
Rotorua Pacific Island Development Charitable Trust
Pacific Island Community (Tauranga) Trust
Pacific Islanders Community Trust Gisborne
Kainga Pasifika Services Trust
Vaimoana Pasifika Charitable Trust (Taranaki)
Paipaioea Pasifika Community Trust
South Waikato Pacific Islands Community Services Trust
Pasifika o Wairarapa
Solomon Islands Society of Waikato Inc.

Wellington

Taeamanino Trust
He Whanau Manaaki O Tararua Free-Kindergarten Association Inc.
Pacific Health Plus
Wellington Tongan Leaders Council Trust
Atafu Tokelau Community Group Ltd.

South Island

Nelson Tasman Pasifika Community Trust
Marlborough Pacific Trust
Etu Pasifika Ltd – Christchurch
Fale Pasifika O Aoraki Trust Society Inc.
Canterbury District Health Board
Pacific Trust Otago
Pacific Islands Advisory Charitable Trust

National Partners

Ministry of Health
Pacific Leadership Forum
Elika Consulting





Pictured: The Fono CEO Mr Tevita Funaki

The Fono's Covid-19 Response: Working Overtime To Deliver Holistic Support To Auckland's Vulnerable Pasifika Families

The Fono is the country's largest provider of Pacific health and social services, serving communities with Whānau Ora, medical, dental and social services, along with pharmacy, health promotion, and education across six locations in Auckland and Northland. Meeting the immediate needs of those struggling, including families self-isolating both in managed facilities and at home, has been a key focus of The Fono's Covid-19 work. The Fono's strong relationships with Pacific families, and support from Pasifika Futures and the Whānau Ora network, have been crucial to enabling a swift response to meet Pacific families' unique needs.

At the height of the Covid-19 crisis, The Fono's Social Services team were receiving almost 200 messages and phone calls a day from families requesting support to deal with the wide-ranging health and financial impacts of the pandemic. While the impacts of Covid-19 have been widely felt, the unprecedented demand for the Fono's services highlights the extent to which the Pacific community have been disproportionately affected due to deep existing social and health inequalities. These inequalities are now being further entrenched due to job losses, often leaving a family's sole breadwinner without income, and reduced participation in education as high school and university students leave their studies to take on casual or low-paid jobs in order to support their families. The Fono CEO, Tevita Funaki, describes the multiple vulnerabilities and pressure before the pandemic:

"COVID is frightening for those people who are living in overcrowded homes. It is frightening for people who are living in cold houses. It is frightening for those people that have chronic illnesses, with co-morbidities and multimorbidities of chronic illnesses. It is frightening for those people who work low paid jobs, multiple jobs and long hours. So, unfortunately, a lot of our people are in those categories."

Thanks to resourcing from Pasifika Futures, to date The Fono has distributed over 20,000 support packages to Pasifika households in Auckland. The packages include household items and food supplies, but could also include financial support such as helping families with power, rent and internet payments, along with resources to assist with home learning.

"We have a large family of 7 children, [with] ages ranging from 22 to 11 years of age. The timing of your [package] has meant that we are able to support our eldest daughter who is currently flatting with food, as well as have our cupboards and household filled while we are limited to our homes... this has lifted our spirits and strengthened our faith ... Love and blessings from our whānau to yours." – Family with 7 children, receiving a pack from the Fono

As a Whānau Ora partner, the Fono's assistance extends well beyond distributing food and supplies. Just as important has been the ongoing Whānau Ora support which has included budgeting, mental health, access to medications, advocacy with WINZ and landlords, liaising with employers and referrals to other social service providers and government agencies.

Providing Covid-related health support and advice has been another key part of the Fono's response, in addition to meeting the enhanced need for their regular medical and dental services. A medications compliance

initiative was also developed to ensure at-risk and chronically ill patients received the right medications during the two lockdown periods.

Mr Funaki explained how staff remained in daily contact with those who tested positive, providing them with reassurance and comfort during this tough time. "The families are nervous. There is a level of anxiety there. They need to know that this is not their fault...We are here to make sure the families are okay and that their economic and personal needs are catered for during this time," he says.

The response to Auckland's outbreak has required a different approach, a response that understands the complexity of the context in which many Pacific families live. "There has to be a recognition, and it was really highlighted during this Covid period, that in terms of our Whānau Ora based model of care, that addressing the needs of the family as a whole, in a holistic way, is the way to go" Mr Funaki explains. The Whānau Ora model has proven its effectiveness, "and agencies need to accept that this is how we will support and will continue to support our families".



Coming Together To Protect Our Community

Pasifika Futures maintained support for Pacific families throughout the COVID outbreak, working closely with government and partners across the country to ensure help was mobilized as fast as possible for Pacific communities.

Director of Strategy for the Auckland District Health Board (ADHB), Meg Poutasi, said at the time.

“Partners are the people you rely on in times of challenge and emergency. Having well established relationships makes everything move faster. We’ve partnered with Pasifika Futures to ensure there’s a response for the immediate needs of families. We’re able to really deliver for Pacific communities and focus on what’s important for families.”

Director of Pacific Health at the Ministry of Health (MoH), Gerardine Clifford-Lidstone, also endorsed the approach. “Pasifika Futures have access to the Pacific communities and so we get a holistic picture of what’s going on and are able to provide services to what people need on the ground. I hear the concerns of our community and we try our best to meet those needs, but it can’t be done alone. We have to work together.”



Working with Partners during COVID

“We were hit quite hard by the outbreak, with many families affected. Pasifika Futures ensured we assisted families with welfare support, food parcels and essentials to help keep them safe and protected.”

“PFL supported us with funding for our families who were in isolation, which was a difficult time for many as they were unable to work. They also supplied us with masks and RAT kits that we were able to distribute to our community.

“They also provided us with a team that helped with the collection of data for families in isolation and we maintained regular communication to ensure the families had everything they needed. We are so grateful to the team at PFL and wouldn’t be able to do this without their support. Our partnership allowed us to support our Pacific families and help them get through in times of need.” **Fale Pasifika Co-Chair, Mr Johnny Kumitau**



Pasifika Futures Urgent Response Team – consistent support in uncertain times

The PFL Urgent Response team was set up to deliver parcels quickly and essentially on the same day for Pacific families in need.

A team of 11, made up of an admin team, drivers and support workers received referrals from the Auckland Regional Public Health Service as well as referrals from partners.

The support packages provided by PFL contained canned goods, cereal, treats, hygiene products, as well as fresh meat. Also included were potatoes, kumara, carrots, washing powder, bread, milk, margarine and toilet paper.

By the completion of Alert Level restrictions, Pasifika Futures (PFL) urgent response team had supplied over 17,300 support packages to families across New Zealand.



‘Food for Eight’

“We were self-isolating at home back when there was a positive case at McAuley High School. My sister is a student there, but also a few of us were self-isolating anyway because we were at other locations of interest. There were 8 of us in my household so food goes quite fast. We got a food package from Pasifika Futures and it was honestly a blessing.

Even though we didn’t ask for it, it was nice that the support was there for families. Being a large household, the food definitely helped take away some of the stress around our food lasting in isolation.

My family and I were really grateful. I think our people should be comforted knowing that organizations like Pasifika Futures are out there doing their thing to help the community.” Mr Lavi Vete

‘Family Essentials’

“Thank you so much for your generosity for the food parcels and food bags with family essentials. My family (a household of ten) is very grateful and blessed for your ongoing support for the last couple of weeks during lockdown in this pandemic situation. Just because of you and your organization, we have been able to provide a properly balanced diet for my entire household.” Brandon Manukia





Protecting our communities and families – Vaccination Drives

At the end of September 2021, a series of vaccination drives were organised with Pacific communities to boost immunisation rates and protect families.

The Samoan vaccination drive-through event – Samoa Tatou Tutū Fa’atasi – took place at the Māngere Town Centre. At the time, only 33% of the Samoan population in Auckland were fully vaccinated.

Dr Maryann Heather, a board director of the Pasifika Medical Association (PMA) Membership board and GP at South Seas Healthcare in Ōtara said at the time, “This is an opportunity for our Samoan community to come down as a family to get vaccinated. The main thing for us is making sure that we’re taking steps towards protecting our community and families.”

A similar vaccination drive took place at the Atiu Hall in Favona for the Cook Islands community.

PMA Board Chair, Dr Kiki Maoate (ONZM, FRACS), helped lead the community drive and noted: “We move as a tribe and there’s a reliance on trusted leadership to provide direction for our communities. It’s crucial that the leadership is ethnic specific as much as possible as that will improve the trust and the confidence of our people to be involved.”

Clinical Director for the Mt Wellington Integrated Health Centre, Dr Minnie Strickland, agreed: “We have community leaders from each island reaching out to their community members by ringing their dance groups, sport groups and family circles; encouraging them to get vaccinated at the drive this week. Everyone knows they need to be vaccinated so our one-on-one approach is a more personal form of engaging the community.”



The Niuean community also swung into action with its own drive with organisers aiming to vaccinate at least 500 people a day. At the time, only 31% of the community were fully vaccinated. PMA member Dr Collin Tukuitonga led the Niuean vaccination event and said:

“A community owned and driven event is always going to be more successful. When we take ownership and do it ourselves, the people will come. Our vaccine coverage rates are among the lowest and Pacific people are at an increased risk from the virus. So we’ve rallied together, using our family and community networks to encourage people to get vaccinated.”

3. Our Results





Outcome 1: Lifelong Learning

Intermediate outcome: Pacific families are achieving educational success, supporting and nurturing educational success and are technically literate.



Outcome 2: Living Longer, Living Better

Intermediate outcome: Pacific families are smoke free, managing their health in partnership with health professionals, and are able to manage their mental health and wellbeing needs.



Lifelong Learning Partners

28

Core Partners



5

Innovation Partners



8

Community Partners

Outputs in FY21/22



5,398
Families Engaged



1,612

Lifelong Learning
Plans Created



2,384

Lifelong Learning
Goals Achieved



13,813

Lifelong Learning
Outcomes Achieved

Short Term Outcomes	Indicator	Actual 2022	Target 2022	Actual 2021	Target 2021
Increase in Early Childhood Education (ECE)	Children Not Enrolled are Now Enrolled in ECE	58% 1015/1743	60%	63% 1172/1853	60%
Achieving NCEA and University Entrance	Achieving University Entrance	65% 26/40	Outperform National Benchmarks Pacific (34%)	61%	Pacific National Benchmarks (34%)
	Achieving NCEA L3	66% 69/104	Outperform National Benchmarks Pacific (65%)	96%	Pacific National Benchmarks (69%)
	Achieving NCEA L2	76% 124/164	Outperform National Benchmarks Pacific (71%)	90%	Pacific National Benchmarks (77%)
Short Term Outcomes	Indicator	Actual 2022	Target 2022	Actual 2021	Target 2021
Increase in Pacific Student Science Participation	Pacific Students Taking Science L3	21% 43/205	Outperform National Benchmarks Pacific (7%)	22% 32/146	Pacific National Benchmarks Level 3 Science (18%)

Lifelong Longer, Living Better Partners

28

Core Partners



4

Innovation Partners



2

Community Partners

Outputs in FY21/22



4,167
Families Engaged



1,962

Living Longer,
Living Better
Plans Created



2,404

Living Longer,
Living Better
Goals Achieved



13,202

Living Longer,
Living Better
Outcomes Achieved

Short Term Outcomes	Indicator	Actual 2022	Target 2022	Actual 2021	Target 2021
Smoke Free Families	Families Who Had A Smoker In The Family And Are Now Smoke Free	47% 801/1707	35%	47% 858/1829	35%
Outputs	Indicator	Actual 2022	Target 2022	Actual 2021	Target 2021
Managing Your Health In Partnership With Health Professionals	Health Plans Completed With Health Professional	77% 2871/3708	80%	79% 3132/3978	80%
Mental Health	Families Accessing Mental Health Services	2484	300	446	300



Outcome 3: Financial Freedom

Intermediate outcome: Pacific families are economically independent and resilient, reducing their debt, owning and operating businesses and on pathways to home ownership.



Financial Freedom Partners

28

Core Partners



2

Innovation Partners



1

Community Partners

Outputs in FY21/22



4,018
Families Engaged



2,546

Financial Freedom
Plans Created



3,349

Financial Freedom
Goals Achieved



10,307

Financial Freedom
Outcomes Achieved

Short Term Outcomes	Indicator	Actual 2022	Target 2022	Actual 2021	Target 2021
Reducing Debt	Families Reducing Debt by 5% or More	75% 1831/2431	80%	83% 1963/2351	80%
New Business Start-ups	New Businesses Established	12	10	26	10
Outputs	Indicator	Actual 2022	Target 2022	Actual 2021	Target 2021
Families On A Pathway To Home Ownership	Families Are On A Pathway To Home Ownership	69% 146/213	50%	63% 55/87	50%
On Pathways To Employment And Business Opportunity	Families Are On A Pathway To Increased Income	156% 1183/2126	60%	59% 1329/2265	60%



Outcome 4: Community Connection

Pacific families are living in healthy, safe and violence free environments, are strong leaders, accept and advocate for diversity, are resilient.



Lifelong Learning Partners

28

Core Partners



3

Innovation Partners



13

Community Partners

Outputs in FY21/22



4,444
Families Engaged



1,485

Community
Connection
Plans Created



2,350

Community
Connection
Goals Achieved



16,114

Community
Connection
Outcomes Achieved

Short Term Outcomes	Indicator	Actual 2022	Target 2022	Actual 2021	Target 2021
Positive Connection To Community	Families Who Were Not Connected Are Now Connected	78% 767/988	80%	78% 736/941	80%
Outputs	Indicator	Actual 2022	Target 2022	Actual 2021	Target 2021
Participation In Language And Culture Programmes	Families With A Goal Are Participating In Language And Culture Programmes	89% 729/822	80%	91% 843/926	80%



Outcome 5: Community Resilience and Responsiveness

Pacific families and leaders are adaptive, connected and prepared.



Community Responsiveness & Resilience Partners

40
Partners

Outputs in FY21/22



38,448
Families Engaged



35,326
New Families Reached



1,005,975
Masks Distributed



533,609
Total Social Media Footprint

Short Term Outcomes	Indicator	Actual 2022	Target 2022	Actual 2021	Target 2021
Pacific Families Have Access To Resources To Support Themselves	Pacific Population Supported In Lockdown	41% 158,157 /381,642	20% Of Pacific Population	5% 20,763 /381,642	20% Of Pacific Population
Pacific Families Have Access To Resources To Support Themselves	Pacific Individuals Supported In Self-Isolation	10,352	-	3,964	-
Outputs	Indicator	Actual 2022	Target 2022	Actual 2021	Target 2021
Packages Of Support Distributed	Packages Of Support	80,734	-	10,648	11,406

Ngalu Fānifo

Ngalu Fānifo is a initiative for mental well-being, strongly grounded within a Pacific cultural framework and values. Ngalu Fānifo has made positive differences to the well-being of families by enabling improved access to quality mental health services and holistic support for Pacific families across the country. Over the last year, 2,484 Pacific peoples have engaged with Ngalu Fānifo across the country. Through our partnership with The Fono and Etu Pasifika, mental wellbeing support was delivered to 2,046 Pacific peoples with 5,801 sessions conducted across Waitemata and Canterbury regions. The support involved engagement with health coaches, mental health nurses, psychologists and psychiatrists.

The programme also supported families with welfare and food packages, medical, pharmacy and housing necessities and virtual or phone access to mental health support. In addition, 688 individuals were supported in managed or self-isolation, over the last financial year, an increase of 40% on the previous year.

A partnership with Pacific Media Network has produced 16 dedicated Ngalu Fānifo weekly mental health segments on Radio 531 pi and across social media platforms. Leading Pacific Psychologists and Psychiatrists are invited to share mental health tips and strategies, exploring diverse topics like childhood trauma, coping with Omicron, mental health crisis among youth and strategies to manage stress and anxiety.



Ngalu Fanifo: Omicron Tips





Preparing for Omicron

- ▶ Get tested the moment you start feeling symptoms.
- ▶ Look into information from trusted sources.
- ▶ Sit down as a family and have a plan in place if someone tests positive for Covid-19.

Helping families through the stress of lockdown

Ngalu Fānifo offered expert advice to Pacific families who had to navigate the strains of being in lengthy lockdowns. For those in Auckland it lasted 12 weeks.

Families were encouraged to check in on each other each day and parents to ask their children how they were feeling so they could identify any worries.

Ngalu Fānifo clinical lead Dr Siale Foliaki commented: "If you asked people during lockdown whether they felt more energized because they were at home resting, most people described feeling tired. That fatigue is actually a side effect of feeling anxious."

"Being able to have conversations; checking in with how your children feel is a really great way to start the day. If you think about most Pacific Island families, having those check in conversations is not something we do naturally. I think it's a really good thing to directly ask them what they are worried about. It will tell you something really useful that you might be able to do something about."

Ngalu Fānifo also provided other tips for managing the stress of confinement, such as physical exercise.

"Movement is a really important way of managing anxiety and nervousness. It calms your entire nervous system and it helps your brain focus," says Dr Foliaki.

Families were encouraged have a daily timetable with scheduled breaks and to sit down and make a list of fun activities they could do together to strengthen relationships and keep motivated during a difficult time.

"When our natural rhythm of life changes, during difficult times, one of the most important things we can do to manage stress is to have some structure. During these times having a little bit of a plan for your day really matters."

"And as human beings, we do well if we have something that we can look forward to. It's important to have some fun."



Checking in on mental health for students and young people during exams

The COVID pandemic meant many Pacific high school students returned to school for only a short period before their exams started, creating heightened stress and anxiety for students, parents and teachers across the country.

Pasifika Futures' (PFL) highlighted this issue as a talanoa on the Ngalu Fānifo mental health segment.

An interview with clinical lead for Ngalu Fānifo Dr Siale Foliaki promoted key messages to parents, learners and schools about ways to recognise and manage stress.

"About 70% of young Pacific people really enjoy school. Majority of Pacific kids, they're not going to experience too much in the way of stress and anxiety and the return to school. Often it reduces stress and anxiety."

"But some of them are scared about catching the virus off teachers and other school mates. There are also expectations around exams, their whole lives are ahead of them and they want to do well, because they've

got careers they want to build. If those young people experience a certain amount of distress, their coping strategies get overwhelmed and they can suffer from depression."

"If you're feeling vulnerable at the time because you're suffering from depression, it only takes something small like an exam result not going your way that can lead to really tragic consequences."

"Their sense of self-worth is down, they start to feel guilty in an excessive way about their own personal failings and they start to feel like a burden to others. When it gets to that point I really do recommend getting some professional help.

"Research shows that Pacific Island families are very hesitant to seek professional help. My message to our community is that if they were to seek help, start with your GP and they will know how to navigate the system for you."



Navigating the ‘rough seas’ together. Ngalu Fānifo goes live

During Mental Health Awareness week in 2021, Pasifika Futures launched a dedicated weekly mental health segment in partnership with the Pacific Media Network (PMN) to address mental health concerns from the Pacific community.

Samoan psychiatry registrar and PMA member Dr Christmas Seu says Ngalu Fānifo is all about breaking down barriers to people discussing and improving their mental health.

“Our team is made up of a wide range of professionals, so we’re able to access and dive into all those resources. I think that makes mental health a lot more accessible for our people.”

“We’re able to look at essential topics in the moment, which was particularly helpful around Covid. There were a lot of worries and anxiety showing up which was understandable given the climate that we were in.

People were feeling emotionally and physically drained. That’s something that came to the forefront.”

“A lot of the time we look towards health professionals and think they have all the answers. It actually sits within ourselves and our communities.

“If we’re able to navigate that, I think it’ll be a huge support for our people. Being able to drive that on our weekly Ngalu Fānifo segments through the Pacific Media Network is awesome.”

“Ngalu Fānifo is a Tongan metaphor. When life gets difficult and stormy seas get rough, we need support to ride those waves and gently make it back to shore. That represents what we’re trying to do. We’ve got a responsibility and a duty of care, particularly during times of duress, to help those that are most vulnerable to navigate difficult times.”





SPOTLIGHT ON PARTNERS

Oceania Careers Academy: 133 Graduates

Oceania Career Academy (OCA), a Whānau Ora Innovation partner, celebrated the graduation of 133 carpentry students on 10 June 2022 at Fale o Samoa – Samoa House. A significant achievement for all graduates who completed their qualification despite the disruptions caused by the ongoing COVID-19 pandemic.

Established in 2015, OCA is New Zealand’s first Pacific-owned and led private training establishment providing pathways for Pacific youth into the construction and building industry.

The Academy supported students to complete their programmes by staying connected and mentoring students, opening the campus daily to allow students to complete their assessments, including providing meals for students who attended evening and weekend classes on campus. OCA mentors and navigators also connected students with counselling support and held online classes for students to catch-up on their work.

The graduation ceremony in June was a testament to the commitment of the students, their families and OCA mentors and navigators.



Increasing Science Participation And Achievement

Tamaki College & Otahuhu College Otahuhu College and Tamaki College are both Innovation partners supporting Pacific students to participate and achieve in science at secondary school and beyond. Each school community has faced many challenges in the last year, including significant disruption to teaching and learning through lockdowns, illness and staff and student absence.

Despite these challenges, both Tamaki College and Otahuhu College have supported their students to achieve in science, exceeding national Pacific benchmarks for NCEA achievement and participation. Some of these achievements include:

- ▶ **Outperforming national benchmarks for University entrance: 73% of Tamaki College and 56% of Otahuhu College Pacific science students achieving University Entrance, compared to a national Pacific benchmark of 34%**
- ▶ **Outperforming national benchmarks for science participation at Level 1, 2 and 3. At Level 3 22% (25/115) of Otahuhu College students take science and 20% (18/90) at Tamaki College. This compares to only 7% of Pacific students taking science at Level 3 nationally**

"We were enabled to serve our community with the fund given by PFL."

Soana Pamaka BA, Aki Dip Tchg ACE
Principal, Tamaki College



Pathways To Success – Project RISE Tamaki College

Project RISE is a community development program that helps Tamaki College connect with the local community to create value for the community. It does this by co-designing projects that support the needs of the community, establishes a community governance model that ensures it is for and by the community, that then drives education, community and social enterprise projects so that the community can take charge of their own economic and social development.

"The Tamaki College Tereora Academy wishes to acknowledge the continued support from Pasifika Futures. Your investment in our Academy has meant that Pasifika Families in Tamaki College have access to resources, tools and people who can provide the assistance they need to work towards living prosperous lives in Aotearoa New Zealand. Thank you for enabling us! Thank you for supporting our families! Thank you for making us Visible!"

*Te Atua te aroa ia koutou katoatoa.
Kia Orana, e kia Manuia
DJ Tuaru Temu
Aka'aere/Director
Tereora Academy*





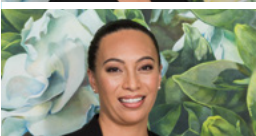





"The **support we offered** was able to happen because of our **meaningful and trustworthy partnerships** with these school communities."

Craig Sionetuato, BA
Director of Partnerships
Pasifika Futures Ltd

4. Our Organisation

Our Leadership

	Mrs Debbie Sorensen, C.C.T, CMinstD, NZRPN Chief Executive
	Taulapapa Wilmason Jensen, BA, LLB Deputy Chief Executive
	Mrs Seini Jensen, BA, LLB, MA(Hons.) Director of Performance and Evaluation
	Mrs Gina Harvey, BSc Director of People Capability & Governance
	Mrs LucyAnne Laurenson, CertTravel Director of Training & Development
	Mrs Rosemary McGlynn, BBus (Accounting), CA Director of Finance
	Mr Ralph Erika Director of Communications
	Mrs Luana Clifford FA Cert Director of Partnerships

Our Partnerships

Relationships are the core to improving outcomes for Pacific families. Pasifika Futures has been intentional about establishing, nurturing and growing strong and positive relationships with like-minded organisations with similar values and priorities. Our range of partnerships have grown and deepened, across philanthropy, government agencies, and sector specialist organisations. Highlights include:

- ▶ Canterbury District Health Board
- ▶ Auckland District Health Board
- ▶ Ministry of Health
- ▶ Ministry of Pacific Peoples
- ▶ Te Puni Kokiri
- ▶ Counties Manukau District Health Board
- ▶ Waitemata District Health Board
- ▶ Auckland Regional Public Health Service
- ▶ Northern Region Health Coordination Centre
- ▶ Ministry of Social Development

Pasifika Futures Trust
Financial Statements
For the Year Ended 30 June 2022

Financial Statements

For the Year Ended 30 June 2022

Pasifika Futures Trust

Statement of Comprehensive Revenue and Expenses

For the year ended 30 June 2022

	Note	2022 \$	2021 \$
Revenue			
Revenue from Exchange Transactions	5	63,913,910	41,315,765
Total Revenue		63,913,910	41,315,765
Expenses			
Administration Expenses	6	151,295	133,513
Commissioning Expenses		50,175,945	29,993,767
Development Programme		565,760	565,760
Group Management Expenses		12,941,782	10,520,951
Total Expenses		63,834,781	41,213,991
NET SURPLUS AND TOTAL COMPREHENSIVE REVENUE AND EXPENSES FOR THE YEAR		79,128	101,774

The above statement should be read in conjunction with the notes to and forming part of the consolidated financial statements.

Financial Statements

For the Year Ended 30 June 2022

Pasifika Futures Trust

Statement of Financial Position

As at 30 June 2022

	Note	2022 \$	2021 \$
Current Assets			
Cash and Cash Equivalents	7	9,414,569	10,251,418
Short Term Investments		6,522,196	6,732,927
Accounts Receivable from Exchange Transactions		992,834	869,314
GST Receivable		-	114,401
Accrued Revenue from Exchange Transactions		333,897	11,496
Prepaid Expenses		743,423	110,000
Total Current Assets		18,006,920	18,089,556
Non-Current Assets			
Property, Plant & Equipment	8	228,362	259,370
Total Non-Current Assets		228,362	259,370
TOTAL ASSETS		18,235,282	18,348,926
Current Liabilities			
Accounts Payable		1,244,833	898,882
Accrued Expenses		1,823,547	3,621,545
GST Payable		2,372,409	-
Revenue Received in Advance		11,351,725	12,464,859
Total Current Liabilities		16,792,514	16,985,286
TOTAL LIABILITIES		16,792,514	16,985,286
NET ASSETS		1,442,768	1,363,640

The above statement should be read in conjunction with the notes to and forming part of the consolidated financial statements.

Pasifika Futures Trust

Statement of Financial Position As at 30 June 2022

	Note	2022 \$	2021 \$
Represented by:			
NET ASSETS/EQUITY			
Accumulated Revenue and Expenses		1,442,768	1,363,640
TOTAL NET ASSETS/EQUITY		1,442,768	1,363,640

Signed for and on behalf of the Board of the Corporate Trustee company who authorised these financial statements:

Chairperson  Director 

Date 7 December 2022

The above statement should be read in conjunction with the notes to and forming part of the consolidated financial statements.



BDO Auckland

INDEPENDENT AUDITOR'S REPORT TO THE TRUSTEE OF PASIFIKA FUTURES TRUST

Opinion

We have audited the financial statements of Pasifika Futures Trust ("the Trust"), which comprise the statement of financial position as at 30 June 2022, and the statement of comprehensive revenue and expenses, statement of changes in net assets and statement of cash flows for the year then ended, and notes to the financial statements, including a summary of significant accounting policies.

In our opinion, the accompanying financial statements present fairly, in all material respects, the financial position of the Trust as at 30 June 2022, and its financial performance and its cash flows for the year then ended in accordance with Public Benefit Entity Standards ("PBE Standards") issued by the New Zealand Accounting Standards Board.

Basis for Opinion

We conducted our audit in accordance with International Standards on Auditing (New Zealand) ("ISAs (NZ)"). Our responsibilities under those standards are further described in the *Auditor's Responsibilities for the Audit of the Financial Statements* section of our report. We are independent of the Trust in accordance with Professional and Ethical Standard 1 *International Code of Ethics for Assurance Practitioners (including International Independence Standards)* (New Zealand) issued by the New Zealand Auditing and Assurance Standards Board, and we have fulfilled our other ethical responsibilities in accordance with these requirements. We believe that the audit evidence we have obtained is sufficient and appropriate to provide a basis for our opinion.

Other than in our capacity as auditor we have no relationship with, or interests in, the Trust.

The Trustee's Responsibilities for the Financial Statements

The Trustee is responsible on behalf of the Trust for the preparation and fair presentation of the financial statements in accordance with PBE Standards, and for such internal control as the Trustee determines is necessary to enable the preparation of financial statements that are free from material misstatement, whether due to fraud or error.

In preparing the financial statements, the Trustee is responsible on behalf of the Trust for assessing the Trust's ability to continue as a going concern, disclosing, as applicable, matters related to going concern and using the going concern basis of accounting unless the Trustee either intends to liquidate the Trust or to cease operations, or has no realistic alternative but to do so.

Auditor's Responsibilities for the Audit of the Financial Statements

Our objectives are to obtain reasonable assurance about whether the financial statements as a whole are free from material misstatement, whether due to fraud or error, and to issue an auditor's report that includes our opinion. Reasonable assurance is a high level of assurance, but is not a guarantee that an audit conducted in accordance with ISAs (NZ) will always detect a material misstatement when it exists. Misstatements can arise from fraud or error and are considered material if, individually or in the aggregate, they could reasonably be expected to influence the decisions of users taken on the basis of these financial statements.



BDO Auckland

A further description of our responsibilities for the audit of the financial statements is located at the External Reporting Board's website at: <https://www.xrb.govt.nz/assurance-standards/auditors-responsibilities/audit-report-8/>.

This description forms part of our auditor's report.

Who we Report to

This report is made solely to the Trust's Trustee, as a body. Our audit work has been undertaken so that we might state those matters which we are required to state to them in an auditor's report and for no other purpose. To the fullest extent permitted by law, we do not accept or assume responsibility to anyone other than the Trust and the Trustee, as a body, for our audit work, for this report or for the opinions we have formed.

BDO Auckland

BDO Auckland
Auckland
New Zealand
8 December 2022



Pasifika Futures Ltd
is a Whānau Ora
Commissioning Agency

Pasifika Futures Ltd.
is a Limited Liability
Charitable Company owned
by the Pasifika Medical

Association

Tel: +64 9 250 5761

W: www.pasifikafutures.co.nz

E: info@pasifikafutures.co.nz

P.O. Box 11445,

Ellerslie, Auckland 1060

Auckland

195L Main Highway,
Ellerslie, Auckland, NZ

Wellington

Level 2, Gleneagles Building,
69–71 The Terrace,
Wellington 6011, NZ