

MELBOURNE'S  
**MOOMBA**  
**FESTIVAL**  
6-9 MARCH 2020



**ROWING CLUB PERMIT**

**RESTRICTED VEHICLE  
PRE & POST EVENT  
ACCESS ONLY**

RPP 28761 & 28762  
THU 27 FEB - SUN 1 MAR (6am-9am & 4pm-8pm)  
THU 12 MAR - FRI 13 MAR (6am-9am & 4pm-8pm)

ACCESS TO BOATHOUSE DRIVE:  
MON 24 FEB- THU 5 MAR  
TUE 10 MAR - FRI 13 MAR

NAME:

PARKING ON BOATHOUSE DRIVE:  
THU 27 FEB - SUN 1 MAR (6am-9am & 4pm - 8pm)  
THU 12 MAR - FRI 13 MAR (6am-9am & 4pm - 8pm)

MOBILE:

Vehicles must park in designated areas as advised by the Site Office.  
Parking in non-designated areas may result in infringement notices being issued.

---

PLEASE DISPLAY ON DASHBOARD OF VEHICLE AT ALL TIMES AND  
ENSURE CONTACT NUMBER IS VISIBLE

**NO PARKING ZONE:**

**START: 12.01AM Monday, 24 February 2020 END: 11.59pm Friday, 13 March 2020**

- Boathouse Drive – No parking on South Side or at the Eastern end of the Boatsheds – please remove all trailers

**RESTRICTED PARKING ZONE:**

**START: 12.01AM Thursday, 27 February 2020 END: 11.59pm Sunday, 1 March 2020**

**START: 12.01AM Thursday, 12 March 2020 END: 4.00pm Friday, 13 March 2020**

- Vehicle Access granted to Rowing Club Members. Moomba Parking Permits will be issued by Security upon entry to Boathouse Drive.
- Limited parking is available to Rowing Club Members on North (river) side of Boathouse Drive from 6am – 9am and 4pm – 8pm. Moomba parking permits must be displayed at all times
- Parking restrictions are in place from 9am - 4pm daily – standard fines will apply

**✗ ROAD CLOSURES:**

- **Soft Road Closure** from Thursday 27 Feb – Sunday 1 March – Vehicle Access and Limited Parking available.
- **Hard Road Closure:** Monday 2 March – Thursday 5 March - Vehicle access will be granted to Rowing Club Members to drop off and pick up athletes. No Parking available – standard fines apply
- **Full Road Closure** from Friday 6 March until Monday 9 March. Strictly no vehicle access and no parking.
- **Hard Road Closure:** Tuesday 10 March – Wednesday 11 March - Vehicle access will be granted to Rowing Club Members to drop off and pick up athletes. No Parking available – standard fines apply
- **Soft Road Closure** from Thursday 12 March – Friday 13 March – Vehicle Access and Limited Parking available.

# MELBOURNE'S MOOMBA FESTIVAL

6-9 MARCH 2020



# BOATHOUSE DRIVE, ALEXANDRA GARDENS ROAD CLOSURE & PARKING RESTRICTIONS

## MON 24 FEBRUARY – FRI 13 MARCH 2020



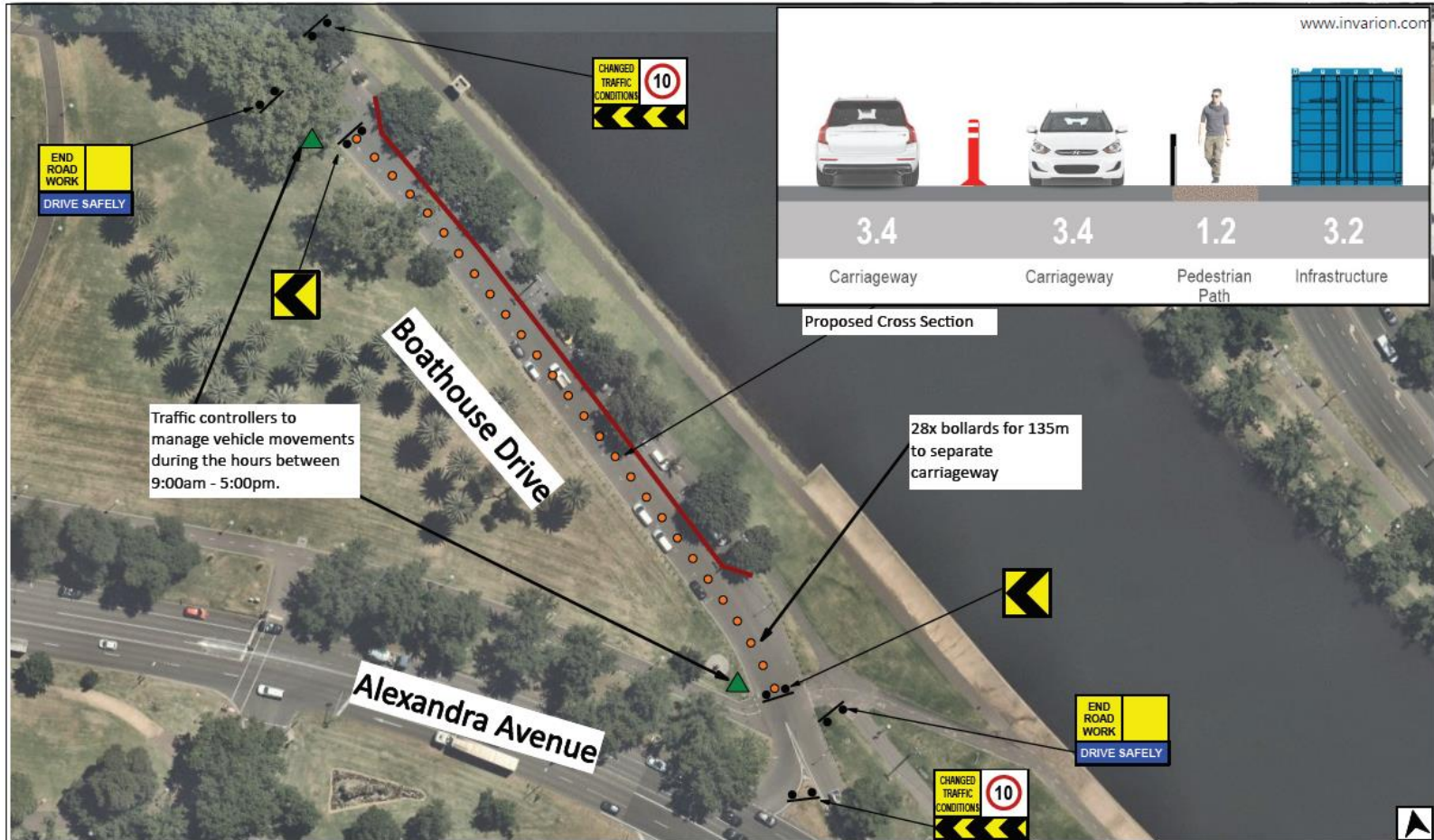
START	END	ROAD CLOSURE	PARKING RESTRICTIONS	INFORMATION
MONDAY 24 FEB 2020	WEDNESDAY 26 FEB 2020	NONE	NO PARKING ON THE SOUTH SIDE OF BOATHOUSE DRIVE	<ul style="list-style-type: none"> <li>Moomba Festival Load-In Commences.</li> <li>Unrestricted vehicle access.</li> <li>Public parking available on the North (river) side of Boathouse Drive – standard rates apply</li> <li>No parking available on the South side of Boathouse Drive</li> <li>Please remove trailers from East End of Boatsheds</li> </ul>
THURSDAY 27 FEB 2020	SUNDAY 1 MAR 2020	SOFT CLOSURE	PARKING RESTRICTIONS IN PLACE ON BOATHOUSE DRIVE – NORTH AND SOUTH SIDES	<ul style="list-style-type: none"> <li>Infrastructure to accommodate the Moomba Masters Water-ski event installed on Boathouse Drive</li> <li>Boathouse Drive Traffic Management Plan implemented – map attached</li> <li>Vehicle Access granted to Rowing Club Members</li> <li>Moomba Parking Permits will be issued to Rowing Clubs in advance, and by Moomba Security upon entry to Boathouse Drive.</li> <li>Limited parking is available to Rowing Club Members on North (river) side of Boathouse Drive from 6am – 9am and 4pm – 8pm. Moomba parking permits must be displayed at all times.</li> <li>Parking availability is limited and is allocated on a first-come, first-serve basis</li> <li>Parking restrictions are in place from 9am - 4pm daily – standard fines will apply</li> </ul>
MONDAY 2 MAR 2020	THURSDAY 5 MAR 2020	HARD CLOSURE	NO PARKING ON BOATHOUSE DRIVE	<ul style="list-style-type: none"> <li>Vehicle access will be granted to Rowing Club Members to drop off and pick up athletes.</li> <li>No Parking available – standard fines apply</li> <li>Trucks arriving from 7am daily; please expect delays entering onto and along Boathouse Drive</li> </ul>
FRIDAY 6 MAR 2020	MONDAY 9 MAR 2020	FULL CLOSURE	NO PARKING ON BOATHOUSE DRIVE	<ul style="list-style-type: none"> <li>Moomba Festival event is live</li> <li>Strictly no vehicle access and no parking.</li> </ul>
TUESDAY 10 MAR 2020	WEDNESDAY 11 MAR 2020	HARD CLOSURE	NO PARKING ON BOATHOUSE DRIVE	<ul style="list-style-type: none"> <li>Moomba Festival Load-Out commences</li> <li>Vehicle access will be granted to Rowing Club Members to drop off and pick up athletes.</li> <li>No Parking available – standard fines apply</li> <li>Trucks arriving from 7am daily; please expect delays entering onto and along Boathouse Drive</li> </ul>
THURSDAY 12 MAR 2020	FRIDAY 13 MAR 2020	SOFT CLOSURE	NO PARKING ON THE SOUTH SIDE OF BOATHOUSE DRIVE	<ul style="list-style-type: none"> <li>Moomba Festival Load-Out commences.</li> <li>Vehicle Access granted to Rowing Club Members.</li> <li>Moomba Parking Permits will be issued to Rowing Clubs in advance, and by Moomba Security upon entry to Boathouse Drive.</li> <li>Limited parking is available to Rowing Club Members on North (river) side of Boathouse Drive from 6am – 9am and 4pm – 8pm. Moomba parking permits must be displayed at all times</li> <li>Parking restrictions are in place from 9am - 4pm daily – standard fines will apply</li> </ul>



# BOATHOUSE DRIVE, ALEXANDRA GARDENS TRAFFIC MANAGEMENT PLAN

THU 27 FEBRUARY – THU 12 MARCH 2020

MELBOURNE'S  
**MOOMBA  
FESTIVAL**  
6-9 MARCH 2020



IMPLEMENTATION DETAIL
IMPLEMENT: THURS 28 FEBRUARY
REMOVE: MON 5 MARCH TO INSTALL ROAD CLOSURE (SEE FIG-G1)
IMPLEMENT: AFTER ROAD CLOSURE REMOVED - MON 11/TUES 12 MARCH
REMOVE: THURS 14 MARCH

INVENTORY
125m of Pedestrian Fencing
28 X Bollards
6 X Sign
2 X Traffic Controllers

Legend
Bollard
Pedestrian Fencing
Sign
Traffic Controller

CITY OF MELBOURNE MOOMBA FESTIVAL 2019 TRAFFIC MANAGEMENT PLAN	
MELWAYS REF. 2F J7 PLAN NO. V163980-01P2	