

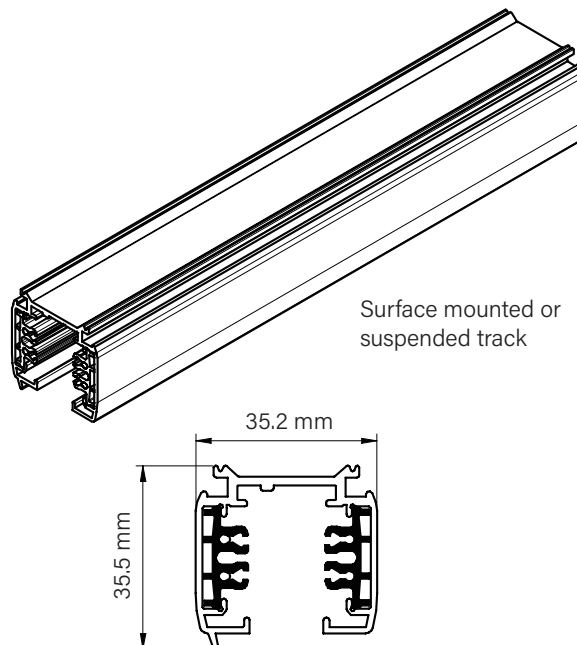
## 3-Circuit Surface/Suspended Track System Installation Manual

### Prior to Installation

Please read and understand all cautions, warnings, instructions and product labels before installing the track system.

### Warning

- ▶ System rating: 400V/16A 3-phase (11KW) or 1-phase 3 circuit 230V/16A (3x3.7 KW)
- ▶ FOR INDOOR USE ONLY and in dry and dust free spaces. System is rated IP20.
- ▶ Do NOT electrically or physically overload system.
- ▶ Use only products intended for operation in this track or compatible.
- ▶ Never force the adaptor into a position or connection. Excessive force is normally an indication of other problems.
- ▶ All electrical connections power feeding the track must be carried out as fixed installation.
- ▶ All dimensions in mm if not stated.
- ▶ Shall only be installed by authorized installer.
- ▶ NEVER power supply the track at more than one connection point!



# Power Track 3-Circuit

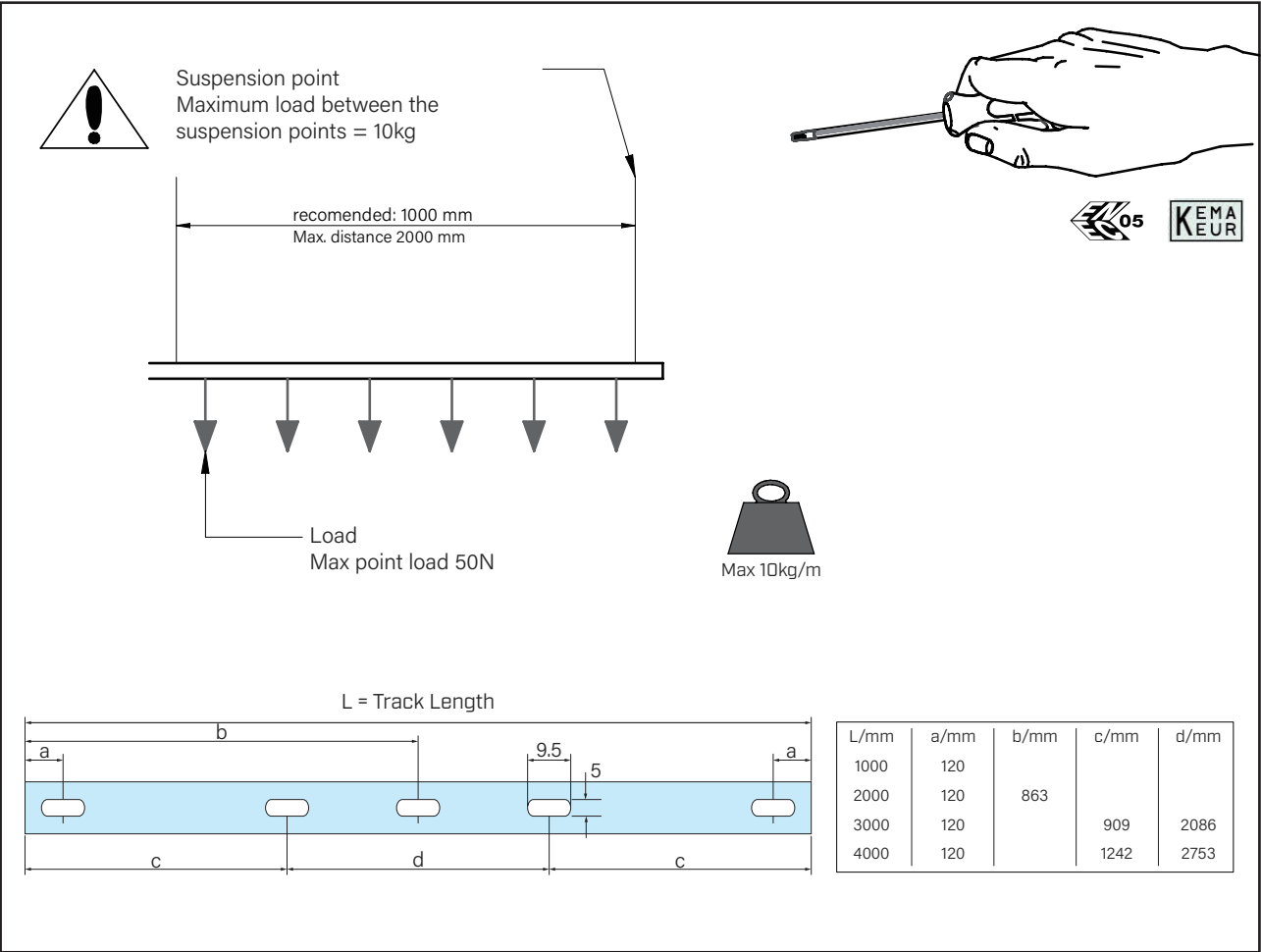
TRACK

Product code MK03

mondolux.com.au



## Important Information



# Power Track 3-Circuit

TRACK

Product codes MK03

mondolux.com.au

**MONDO LUX™**

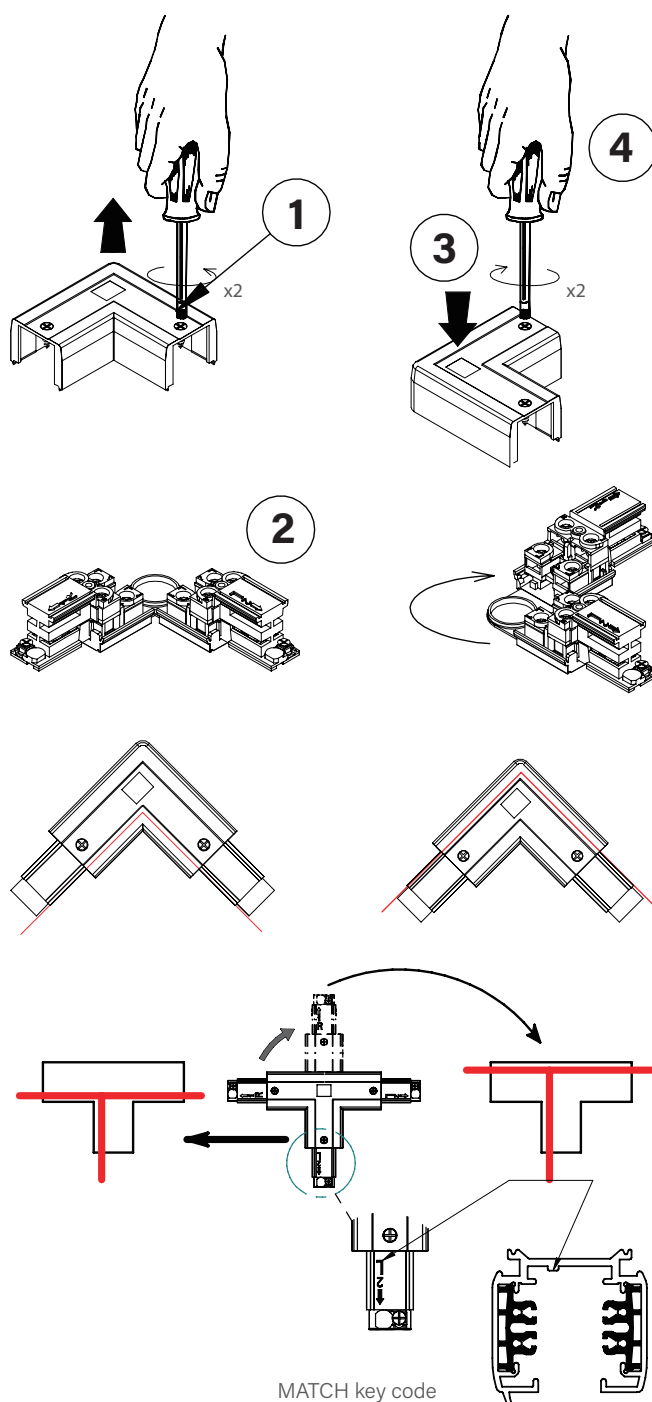
## Connectors

Reversible L and T connector is possible to turn around to match profile direction.

To do so:

1. Unscrew the screws holding the cover and remove the cover.
2. Turn the L connector 180° or the T connector 90°.
3. Put back the cover and tighten the screws.

Be sure to match the profile direction on all connection points.



# Power Track 3-Circuit

TRACK

Product codes MK03

mondolux.com.au

**MONDOLUX™**

## Connectors

\* = Feedable connectors.

Remember, only feed at one point on a system!

Never leave an open end, always use an end cap to cover it - part marked x1.

Accessories marked RIP are intended to be used on suspended tracks to re-inforce the joints. Not needed for surface mounted systems.

