

RV7 - Netball



OVERVIEW

What is RV7?

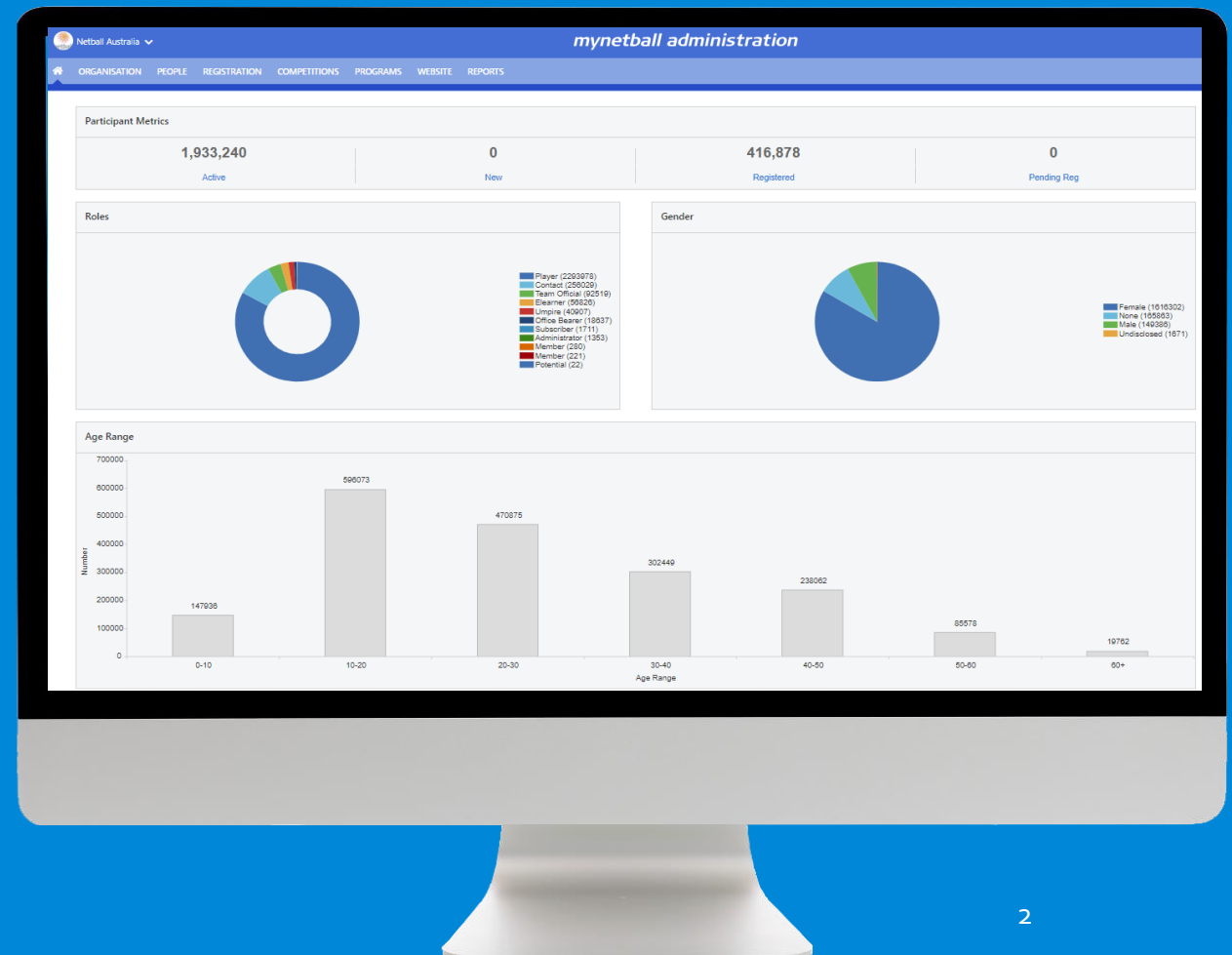
- A project to refresh and modernise the platform across all sports. Includes:
 - User Interface (UI) improvements
 - User Experience (UX) improvements
 - More sophisticated and accessible data

Why?

- Our clients and end users have identified several key aspects of the platform to update, with the aim to improve the experience for users when engaging with our products.

Objective

- Develop a more streamlined and accessible product creating a more user-friendly solution for both administrators and consumers.



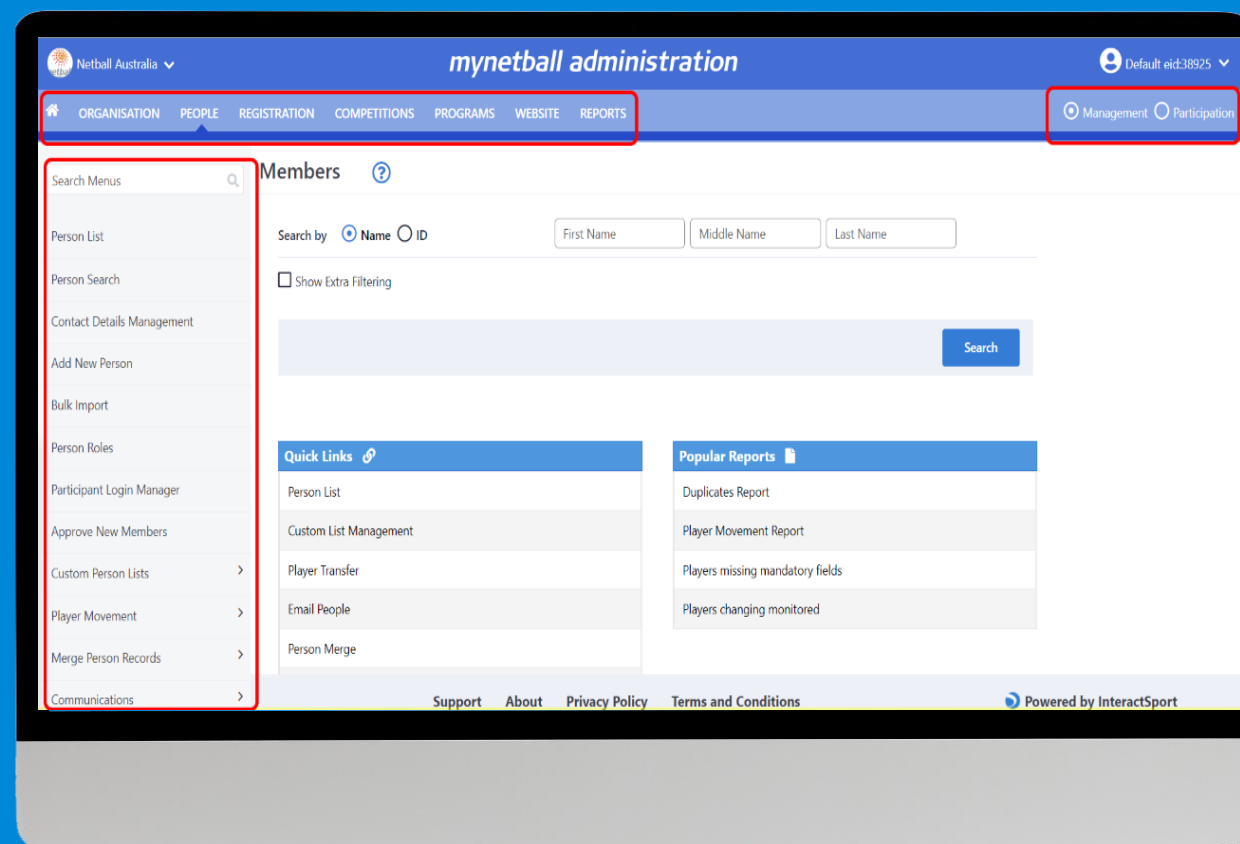
WHAT IS NOT CHANGING...

- Data within the system
- Organisations, affiliations and the hierarchy
- Configuration of competitions/registrations
- Inheriting configuration
- Functionality within the pages
- Participant Portal and Public Portal



NAVIGATION CHANGES / IMPROVEMENTS

- Administration Modes:
 - There are now two Administration Modes available – Management & Participation. The website mode has been removed and now appears as a menu item.
- Menu structure and viewing sub menu items:
 - Menu structure has been reviewed and streamlined.
 - Sub-menu items now appear on the left hand of the screen rather than a drop down menu over the main body of the page.
- Search Menus:
 - To assist admin users find the relevant pages, the menus can be searched and easily navigated to.



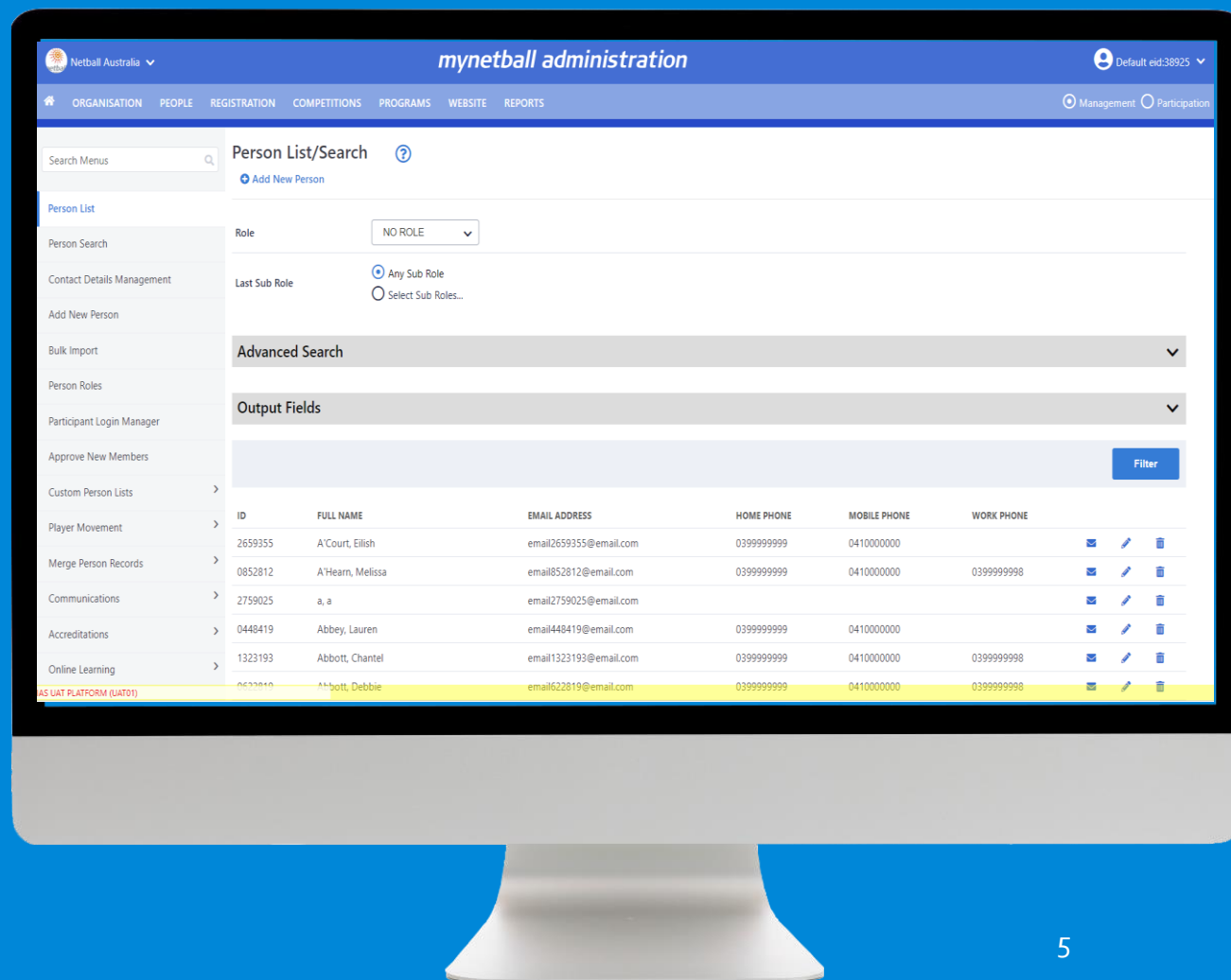
PHASE 1 FOCUS – NAVIGATION & UI

Experience

- User Control
- Organisation Control
- Menu navigation
- Landing Pages

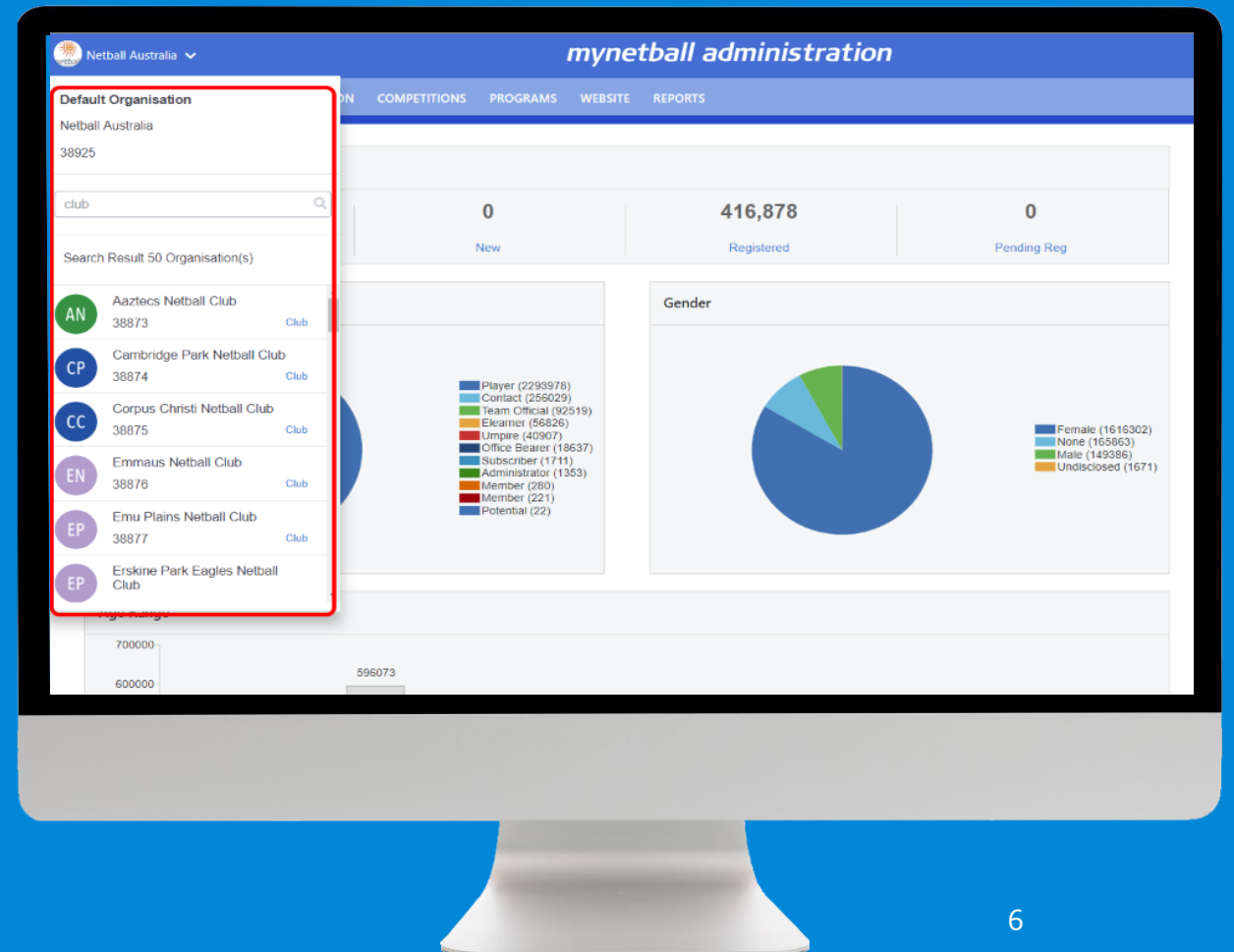
User Interface

- UI Standards - Implement consistent styling and layout across pages and activities
- Developer style guide



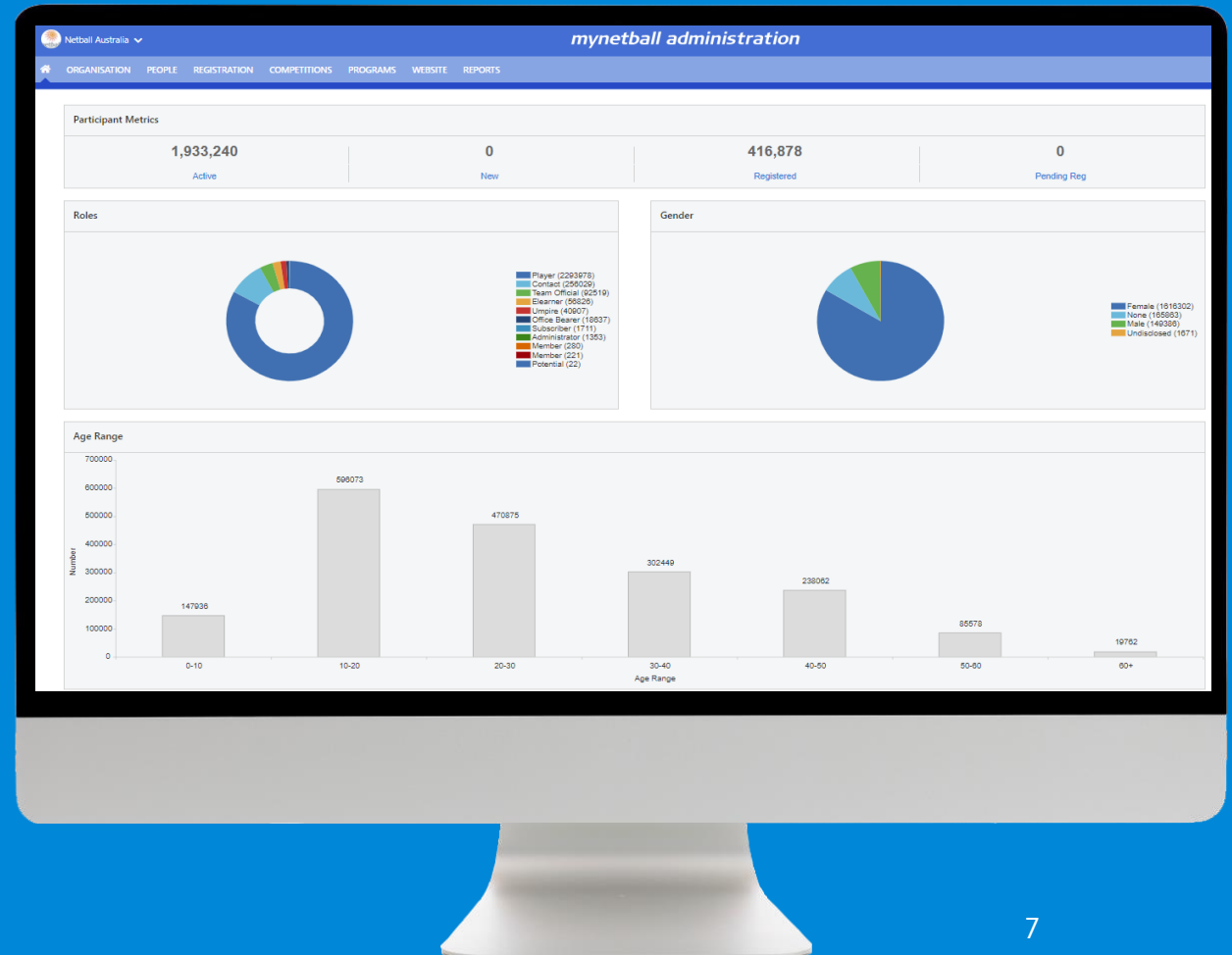
NATIONAL/STATE NAVIGATION

- National and MO users can quickly navigate to and administer child organisations by selecting the organisation logo top left of all screens.
- Viewing and administering organisations can still be navigated to via the 'Search/Edit Organisations'.



LANDING PAGES

- The landing pages have been updated to show relevant data and metrics, whilst also including quick links to popular pages.
- The landing pages are dynamic depending on the type of entity being administered. Eg. a national entity to show high level metrics whilst a club entity will display a task based landing page.



TO BE COMPLETED / UPDATED

- Final stage of QA
- Help topics and content to be linked and displayed throughout the platform.
- Confirmation of Support Management plan
- Video introducing RV7

RV7 DEPLOYMENT – MONDAY 8TH OCTOBER

- **Deployment to Production and monitoring period** – *Monday 8th October to Friday 13th October*
- **Why 8th October?**
 - This is an important upgrade of our platform and early October provides the best window to reduce immediate impact on our end users, namely:
 - It is a low usage period of our platform as we experience a large drop off in usage between October and December each year.
 - Training and education of new or existing users generally commences in October and therefore such a significant change to the interface needs to occur prior to training & education periods.

SUPPORTING YOU THROUGH CHANGE

- Training & change materials currently being developed to assist NA and the MOs to communicate the changes to end users.
- Uplift in resourcing internally to deliver.
- Daily releases to quickly rectify issues post deployment.