



**Netball WA Draft Governance Model – V1**  
Proposed Model, Member & Participant Categories  
Netball WA Regional Offices & Associations

Document 1

# Netball WA – Governance & Membership Review

## Draft Governance Model – Version 1

### Diagram - Draft Governance Model – Version 1

Pages 1 and 2, diagrammatically outline the Netball WA Draft Governance Model – Version 1

DIAGRAM 1

### NETBALL WA - DRAFT GOVERNANCE MODEL - VERSION 1

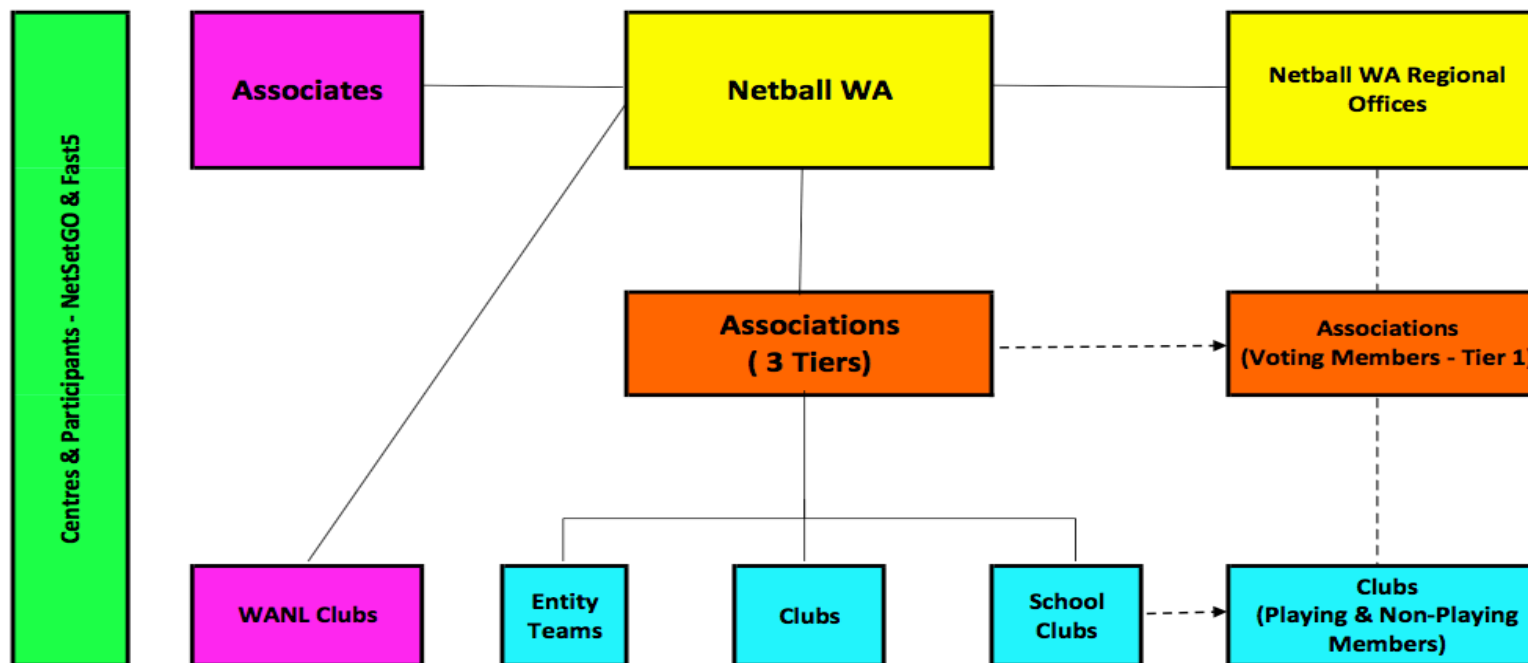
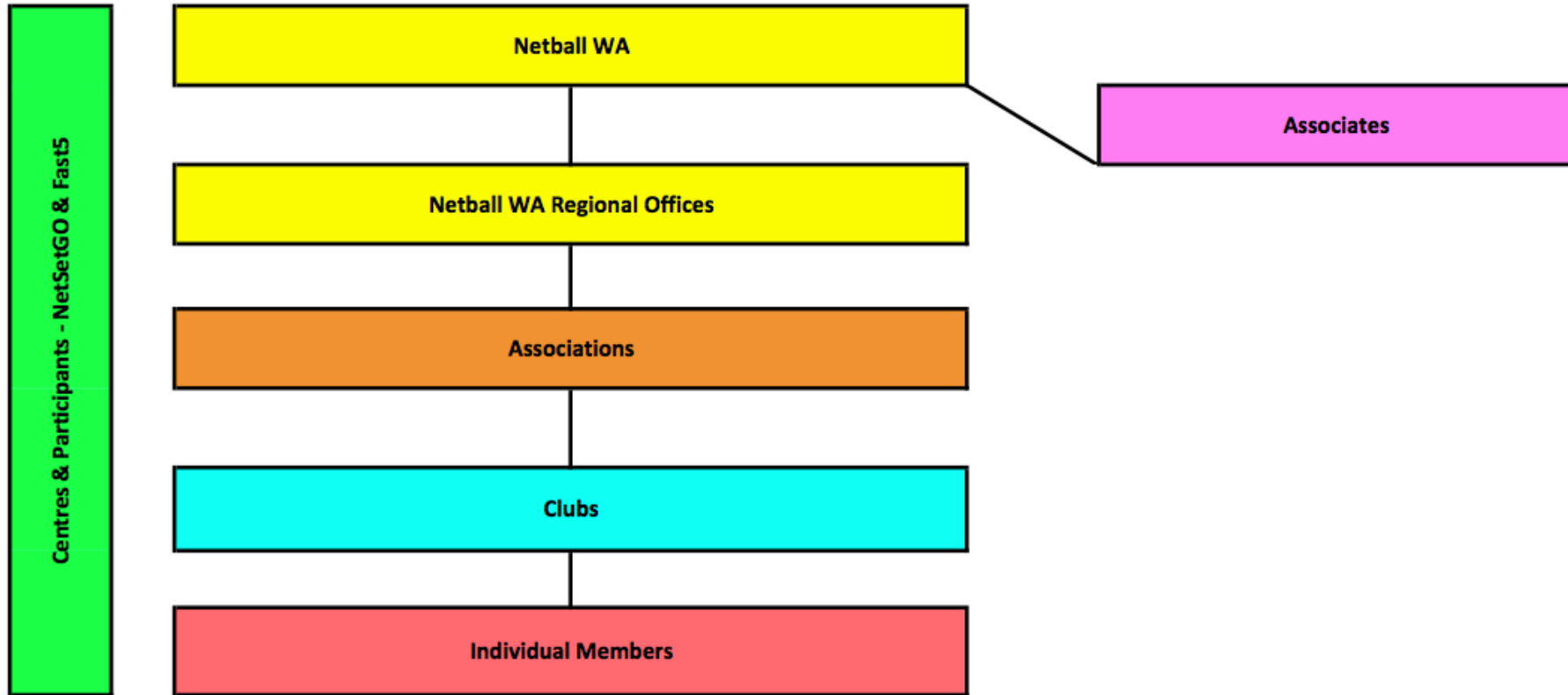


DIAGRAM 2

# NETBALL WA - DRAFT GOVERNANCE MODEL - VERSION 1



Outlined below are the definitions, criteria and other relevant information associated with each component of the Draft Netball WA Governance Model – Version 1.

<b>MEMBER &amp; PARTICIPANT CATEGORIES</b>	
<b>Netball WA reserves the right to change any Membership category as per the Netball WA Constitution or alter any Participation category as required from time to time. The table below outlines all components/categories of the Draft Netball WA Governance Model – Version 1 inclusive of proposed member voting rights.</b>	
<b>Category</b>	
<b>Members shall consist of:</b>	
<b>Associations</b>	<b>Tier 1 Associations</b> , which subject to Netball WA Constitution, shall be represented by their Delegates who shall have the right to attend, debate and vote at General Meetings for and on behalf of the their Association. Refer to Association definitions below for further details.
	<b>Tier 2 Associations</b> , which subject to the Netball WA Constitution, may appoint a representative to attend General Meetings, but shall have no right to debate or vote at General Meetings. Refer to Association definitions below for further details.
	<b>Tier 3 Associations</b> , which subject to the Netball WA Constitution, may appoint a representative to attend General Meetings, but shall have no right to debate or vote at General Meetings. Refer to Association definitions below for further details.
<b>Clubs (Inclusive of WANL Clubs)</b>	<b>Affiliated Clubs</b> , which subject to the Netball WA Constitution, may appoint a representative to attend General Meetings, but shall have no right to debate or vote at General Meetings. Refer to Club definitions (Document 2) for further details.  Under the Club category there are the following Sub-Categories: <ul style="list-style-type: none"> <li>○ Club</li> <li>○ School Clubs</li> <li>○ Entity Teams; and</li> <li>○ WANL Clubs</li> </ul> Refer to Club definitions for further details (Document 2).
<b>Individual Members</b> Playing – Senior Playing - Junior	<b>Individual Members</b> - who subject to the Netball WA Constitution may attend General Meetings, but have no right to debate or vote at General Meetings.
	<b>Playing – Senior</b> - Any player turning 18 Years and over in any given calendar year. Playing

Non-Playing	<p>members must be affiliated with Netball WA via MyNetball.</p> <p><b>Playing – Junior</b> - Any player between the age ranges of turning 11 Years to turning 17 Years in any given calendar year. Playing members must be affiliated with Netball WA via MyNetball.</p> <p><b>Non-Playing</b> – Any person who undertakes a key role and responsibilities within an Association and/or Club. Non-Playing members must be affiliated with Netball WA via MyNetball.</p>
<b>Individual Members</b> Life	<b>Individual Members</b> – who in accordance with the Board-approved Policy have been awarded Netball WA Life Membership. Life Members, who subject to the Netball WA Constitution may attend General Meetings, but have no right to debate or vote at General Meetings.
<b>Associate</b>	<p><b>Associate Members</b> – There are three Sub-Categories within this category – ‘Playing Associates’, ‘Governing Associates’ and ‘Governing &amp; Playing Associate’ Members.</p> <p><b>Associate Members</b>, which subject to the Netball WA Constitution, may appoint a representative to attend General Meetings, but shall have no right to debate or vote at General Meetings. Refer to Associate Member definitions (Document 2) for further details.</p>
<b>Other Category</b>	The Netball WA Board has the right and power from time to time to create new categories of membership with such rights, privileges and obligations as are determined applicable (other than voting rights), even if the effect of creating a new category is to alter rights, privileges or obligations of an existing category of Members. No new category of membership may be granted voting rights. <b>(Netball WA Constitution dated 29 June 2012 – Clause 7.2. – Creation of New Categories).</b>
<b>Product Participants shall consist of:</b>	
<b>NetSetGO</b>	An individual between the age range of turning 5 to turning 10 years of age in a calendar year, who registers to participate in an approved NetSetGO program and/or competition. A NetSetGO Participant must be registered via the NetSetGO MyNetball Module.
<b>Fast5</b>	An individual turning 15 years or over in a calendar year, who registers to participate in an approved Fast5 competition. A Fast5 Participant must be registered via the Fast5 technology platform.
<b>Other – i.e. Grassroots Site, No Limits</b>	An individual who registers to participate in an endorsed Netball WA Participation Program. These participants should also be registered on MyNetball.

### NETBALL WA REGIONAL OFFICES

- Currently there are 11 affiliated Regions, each incorporated and governed by a Regional Board or Committee (GNR excluded).
- Regions are currently the Netball WA Voting Members.
- Under the Draft Netball WA Governance Model – Version 1, it is proposed that all 11 Netball WA Regions are replaced by the Netball WA Regional Offices, 6 of which will be located in regional areas and 3 across the metropolitan area.
- Please refer to the proposed Netball WA Regional Map to view the geographical realignment of Regions to Netball WA Regional Offices (attached).
- Netball WA Regional Offices are established and supported by Netball WA Regional Staff. The plan is to utilise where possible, the existing resources i.e. Administration Officer, Regional Development Officer and Regional Umpire Development Officer.
- Staffing requirements and allocations will also be based on the playing numbers of each Association and geographical considerations.
- Core Business of each Netball WA Regional Office will include – Participation, Community & Competitions, Pathways, Facilities, Member & Fan Engagement, and People & Culture.
- Member Association representatives will be required to meet with Netball WA Regional Offices, a minimum number of times per year to develop, implement and review annual Regional Joint Business Plans and associated operational budgets.
- Delivery of key consistent messaging across the state.
- Financial modelling to support the Netball WA Regional Offices is currently a “work in progress”.
- Regional geographical boundaries will be determined by the Netball WA Board and in accordance with the Netball WA Constitution and Policy.
- Application for Membership to Netball WA will be in accordance with the Netball WA Constitution and Policy.

### ASSOCIATIONS DEFINITION & CRITERIA

Currently there are 73 Associations affiliated with Netball WA. It is understood that within the current affiliated Associations, there is a wide range of Association sizes and varying competitions structures etc. Therefore the Draft Governance Model – Version 1 supports the tiering of associations and the development of criteria that is consistent across all 3 Tiers of the model. Please note that Netball WA has undertaken testing using the 2016 MyNetball data for each Association to determine how many Associations currently sit in each of the 3 tiers. Currently there are 23 x Tier 1, 14 x Tier 2 and 36 x Tier 3 Associations.

Criteria	Tier 1	Tier 2	Tier 3	Rationale
Incorporation Requirement to be Incorporated	Yes	Yes	Yes	Legal protection. Must be incorporated under Incorporations Act (2015).

Criteria	Tier 1	Tier 2	Tier 3	Rationale
<b>Management</b> Managed by a Board or Committee	Yes	Yes	Yes	This is covered by Incorporation Act (2015) requirements.
<b>Agreement</b> Comply and sign Netball WA's Association Annual Affiliation Agreement (AAAA)	Yes	Yes	Yes	AAAA's may vary slightly from tier to tier.
<b>Size</b> Association size currently based on previous year's membership (including all member types i.e. playing and non-playing members <b>but NOT volunteers</b> ) and Unique Product Participants (i.e. NetSetGO)	450+ Playing & Non-Playing Members & Unique Product Participants	250-449 Playing & Non-Playing Members & Unique Product Participants	50-249 Playing & Non-Playing Members & Unique Participants	Tiered servicing system to recognise varying association sizes. Minimum number of members and unique participants to ensure the Association viability.
<b>Minimum Member Competition Requirements</b>	Minimum Requirement: 1 x Senior 1 x Junior 1 x NetSetGO – inclusive of Net Program and Set Competition 1 x other Participant Program/Competition	Minimum Requirement: 1 x Senior 1 x Junior 1 x NetSetGO – inclusive of Net Program and Set Competition	Minimum Requirement: 1 x Senior and/or 1 x Junior and 1 x Participant Program/Competition (Net and/or Set)	Basic function of every Association is to conduct various levels of competitions. (See 'Competition' attachment).
<b>Member Competition Structures</b> Abide by Netball Australia & NWA competition structures e.g. International Rules, NetSetGO Set Competition, and Fast5.	Yes	Yes	Yes	Competitions must be run in accordance with recommended structures unless the size and make-up of the Association precludes this from occurring, in which case an exemption must be sought.

Criteria	Tier 1	Tier 2	Tier 3	Rationale
<b>Club Numbers</b> Minimum number of member Clubs or Entity Teams competing in the Association approved competition	Minimum of 5 separate member Clubs &/or Entity teams	Minimum of 5 separate members Clubs &/or Entity teams	Minimum of 4 separate members Clubs &/or Entity teams	See Club Definitions and Criteria (attachment).
<b>Mandatory use of MyNetball Platform for:</b> <i>Individual Online Membership (Senior, Junior, Non-Playing inclusive of Volunteers) &amp; Participation Registration</i>	Yes	Yes	Yes	Number of members/participants in an Association will be taken from official MyNetball records.
<i>Competition Management</i>	Yes	Yes	Yes	NWA will only recognise competitions registered through MyNetball.
<i>Website</i>	Optional	Optional	Optional	
<b>Pathway</b> Pathway development in place for Players, Coaches, Umpires, Officials	Yes	Yes	Optional but Recommended	Critical function of each Association. Tier 3 Associations may not have the resources to fully implement these criteria.
<b>Compliance</b> Compliant with Netball Australia & Netball WA Policies including the Netball Australia Junior Sport Policy & Child Safeguarding Policies	Yes	Yes	Yes	Best Practice & Integrity of the Sport.
<b>Club Affiliation</b> All Clubs & Entity teams competing in Association competitions to be affiliated with Association and NWA	Yes	Yes	Yes	Constitutional requirement.



Criteria	Tier 1	Tier 2	Tier 3	Rationale
<b>Association Development</b> Association has Association Development Officer (ADO) & Association Umpire Development Officer (AUDO) personnel in place (FT, PT, Honorarium or Volunteer)	Yes	Yes	Optional but recommended	Function of Association is to provide resources and support for development and servicing of their members/participants.
<b>Benefits – Including but not limited to:</b>	<b>Tier 1</b>	<b>Tier 2</b>	<b>Tier 3</b>	<b>Rationale</b>
Voting rights at NWA AGM	Yes	No	No	Tier 2 and Tier 3 Associations do not have voting rights but can work towards these if deemed appropriate.
Representation at Netball WA Regional Office Meetings	Yes	Yes	Optional but Recommended	All Associations have the right to appoint a representative to Netball WA Regional Office meetings.  Tiers 1 & 2 Associations have a responsibility to attend whilst for Tier 3 Associations; attendance would be optional but recommended.
Access to NWA servicing (including from Regional Development Officer - RDO, Regional Umpire Development Officer - RUDO & other NWA staff)	Access to servicing to be determined by NWA Regional Office through the Joint Business Plan process	Access to servicing to be determined by NWA Regional Office through the Joint Business Plan process	Access to servicing to be determined by NWA Regional Office through the Joint Business Plan process	Tiered servicing may be proportionate to Association size.

<b>Benefits – Including but not limited to:</b>	<b>Tier 1</b>	<b>Tier 2</b>	<b>Tier 3</b>	<b>Rationale</b>
Eligible to enter and participate in the Smarter than Smoking Association Championships (or similar)	Yes	Yes	Yes	Feedback from the 2017 NWA Strategic Forum indicated that participation in the Smarter than Smoking Association Championships was seen as a key benefit for Associations, particularly country Associations.
Other benefits to be considered as part of the Member Association Value Proposition currently being developed.	Yes	Yes	Yes	TBC
<b>Fees</b>	<b>Tier 1</b>	<b>Tier 2</b>	<b>Tier 3</b>	<b>Rationale</b>
Netball WA Regional and Individual Member Fee (Flat Fee applied to individual playing members only – Junior & Senior Member Categories, reviewed annually)	Flat fees applied across the state	Flat fees applied across the state	Flat fees applied across the state	NWA to determine a NWA Regional & Individual Member Fees to be applied across the state, whereas currently there is a range of fees that are set and applied by each region.
Netball WA Association Affiliation Fee (Sliding Scale fees applied to the Association Tiers, reviewed annually)	High (E.g. \$500 GST inclusive)	Medium (E.g. \$300 GST inclusive)	Low (E.g. \$165 GST inclusive)	Tiered to reflect the size and of the Association. Benefits will be reflected in tiered servicing model as mentioned above.

**Other Documents:**

**Document 2:** Draft Netball WA Governance Model – V1 (Document 2) – Competition Definitions and Types, Club Definition and Criteria and Associate Member Definition and Criteria.

**Document 3:** Draft Netball WA Governance Model – V1 (Document 3) – WA Netball League Criteria

DRAFT



**Netball WA (Inc.)**

200 Selby Street JOLIMONT WA 6014  
PO Box 930 SUBIACO WA 6904

T (08) 9380 3700 F (08) 9380 3799  
E [info@netballwa.com.au](mailto:info@netballwa.com.au)

[www.westcoastfever.com.au](http://www.westcoastfever.com.au)  
[www.netballwa.com.au](http://www.netballwa.com.au)

