



PROPOSED CAMPUS MASTER PLAN



All Souls St Gabriels School
CHARTERS TOWERS

ink duck

Tiny but mighty architects.

THE PLAN

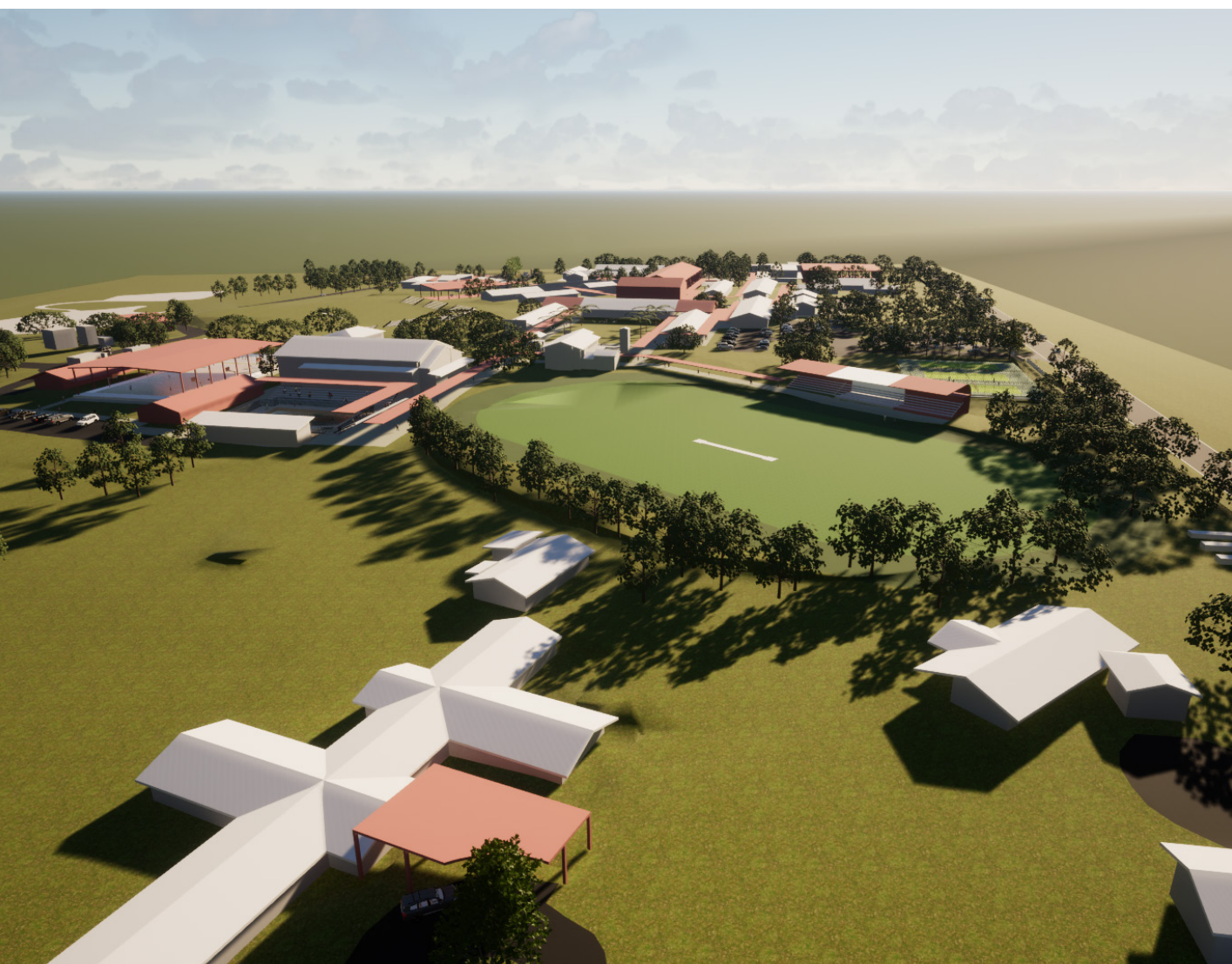
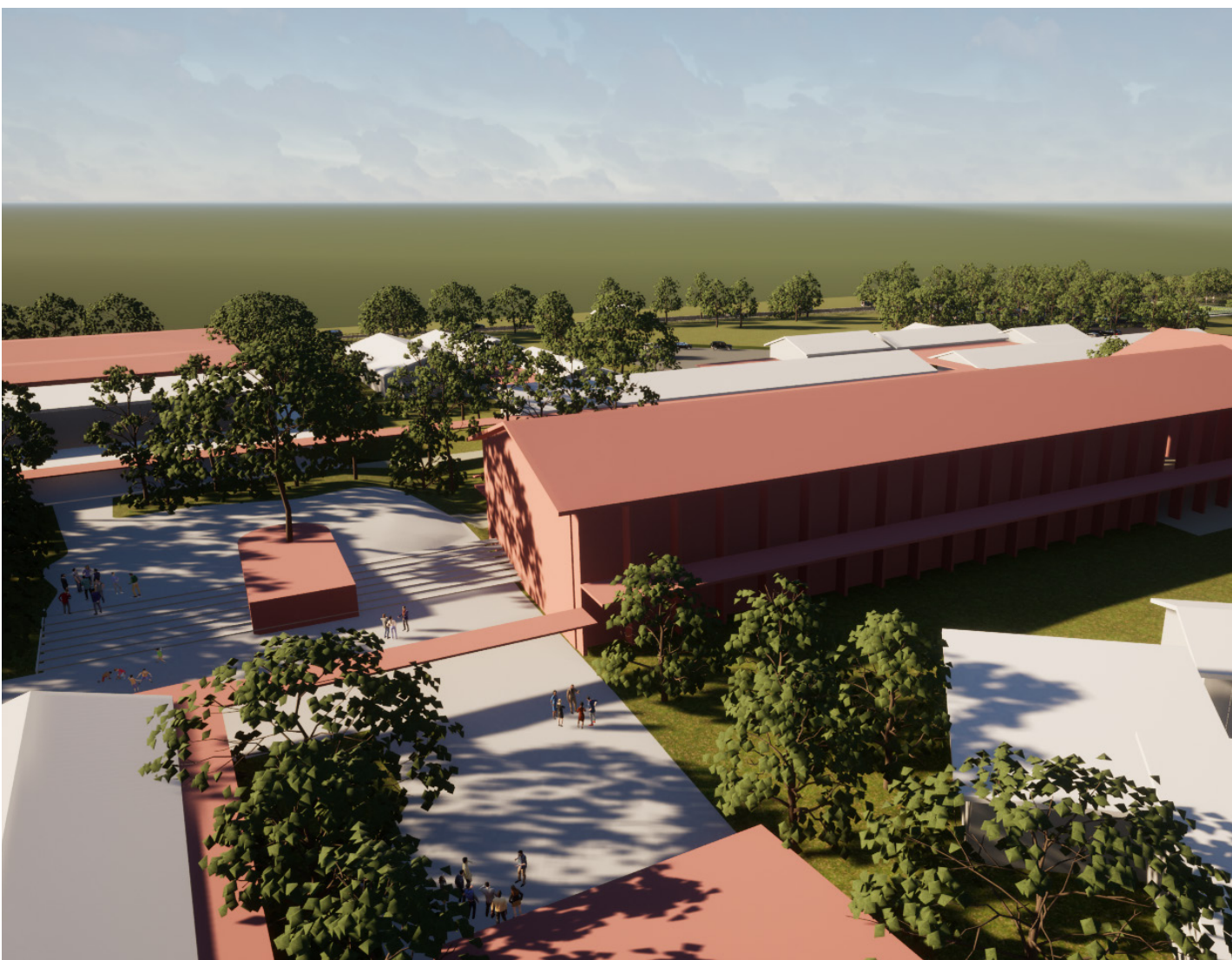
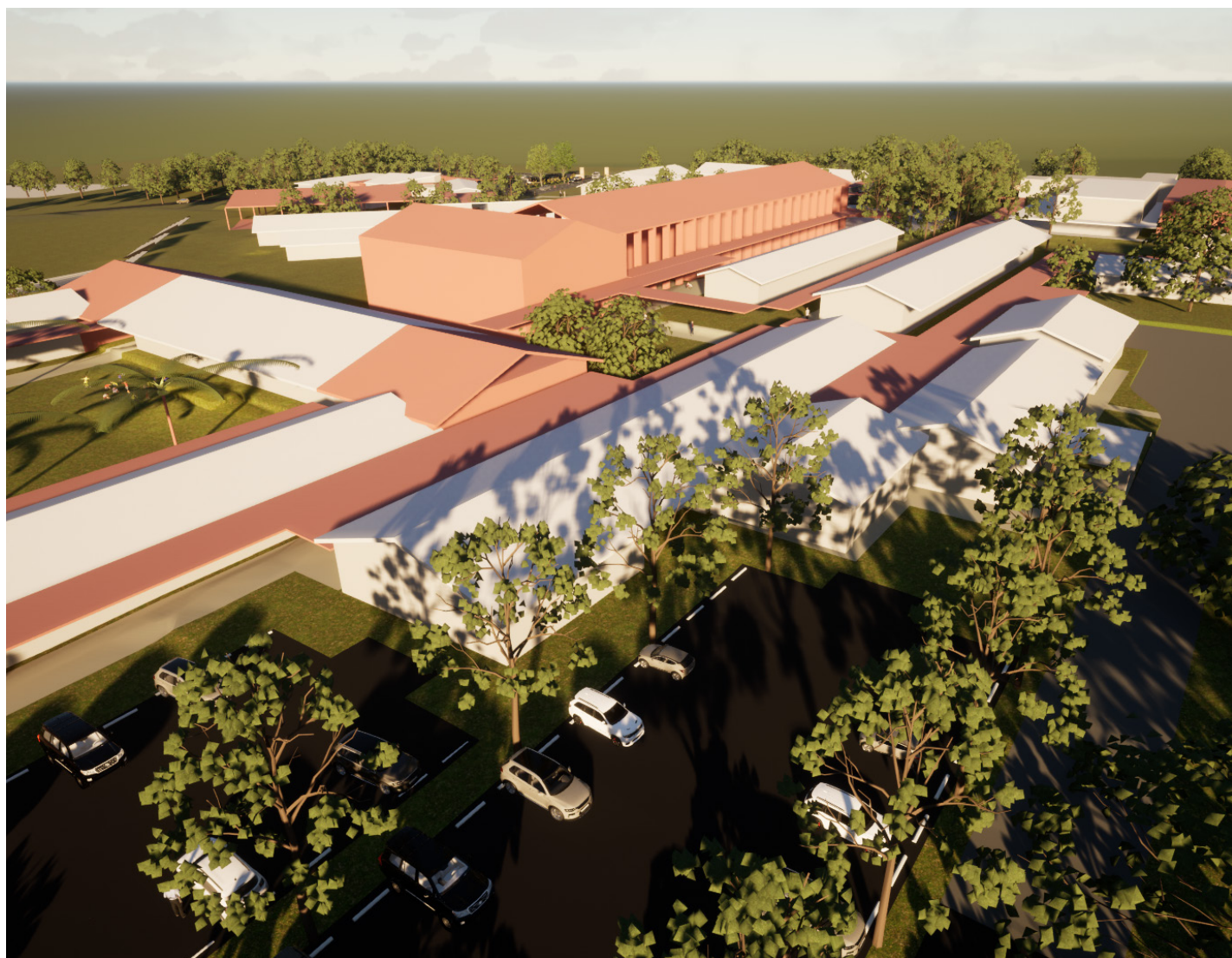
The new Master Plan looks to develop a vision for the School, to be implemented over the next 10 years. It came about to rationalise and facilitate the modernisation of the facilities and a key change to the delivery of consolidated learning services. The Master Plan document takes the time to identify and propose improvements to the campus in a coordinate, achievable and sustainable manner that aligns with the vision of the School.

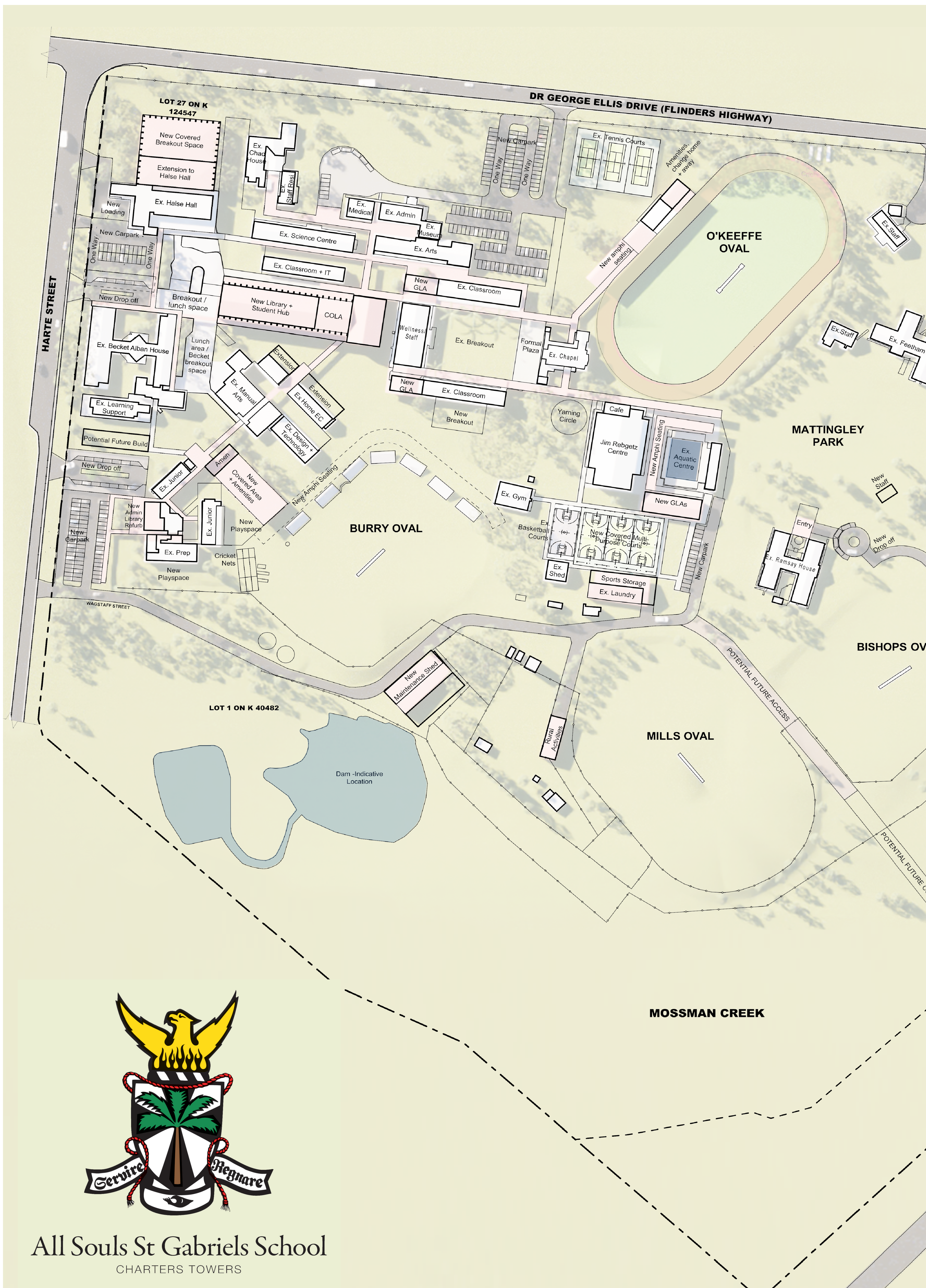
The intent of the document is to be a multi-layer informative document, inclusive of both a landscaping and building stock audit through to a viable vision for the future. The visions for the School campus development plan is one which:

- Embraces all cultural presence on site and offers to boost the already present formation of pride and ownership of place
- Plans for future stewardship and regards the teaching and learning aspect of the premise which drives the ultimate plan
- Consolidates All Souls St Gabriels School to ‘One campus’

- Recognises and enhances the existing open feel to the campus
- Establish clear pedestrian and vehicular access around the entire campus
- Define clear parking areas for staff, students, visitors and maintenance
- Refurbish or allow for the construction of new, larger, fit for purpose flexible learning areas
- Improve way finding and signage through the campus
- Improve staff facilities and amenities

The School carries a rich history which is well depicted through their love of sport, rural studies and community engagement from both current and past families. The proposed master plan looks to honour the heritage of the School and maintain the strong pride it has carried for generations.





All Souls St Gabriels School
CHARTERS TOWERS



JUNIOR SCHOOL

The vision for this precinct is to provide a distinct “front door” for the Junior School by expanding the existing library and administration spaces, construct a new covered outdoor area for students and refurbish the existing classroom spaces.

TRAFFIC MANAGEMENT

The goal is to establish clear and separate pedestrian and vehicular access around the entire campus, define clear parking areas for staff, students, visitors and maintenance as well as improve pick up and drop off facilities for the Junior and Senior School.

CAMPUS UPGRADES

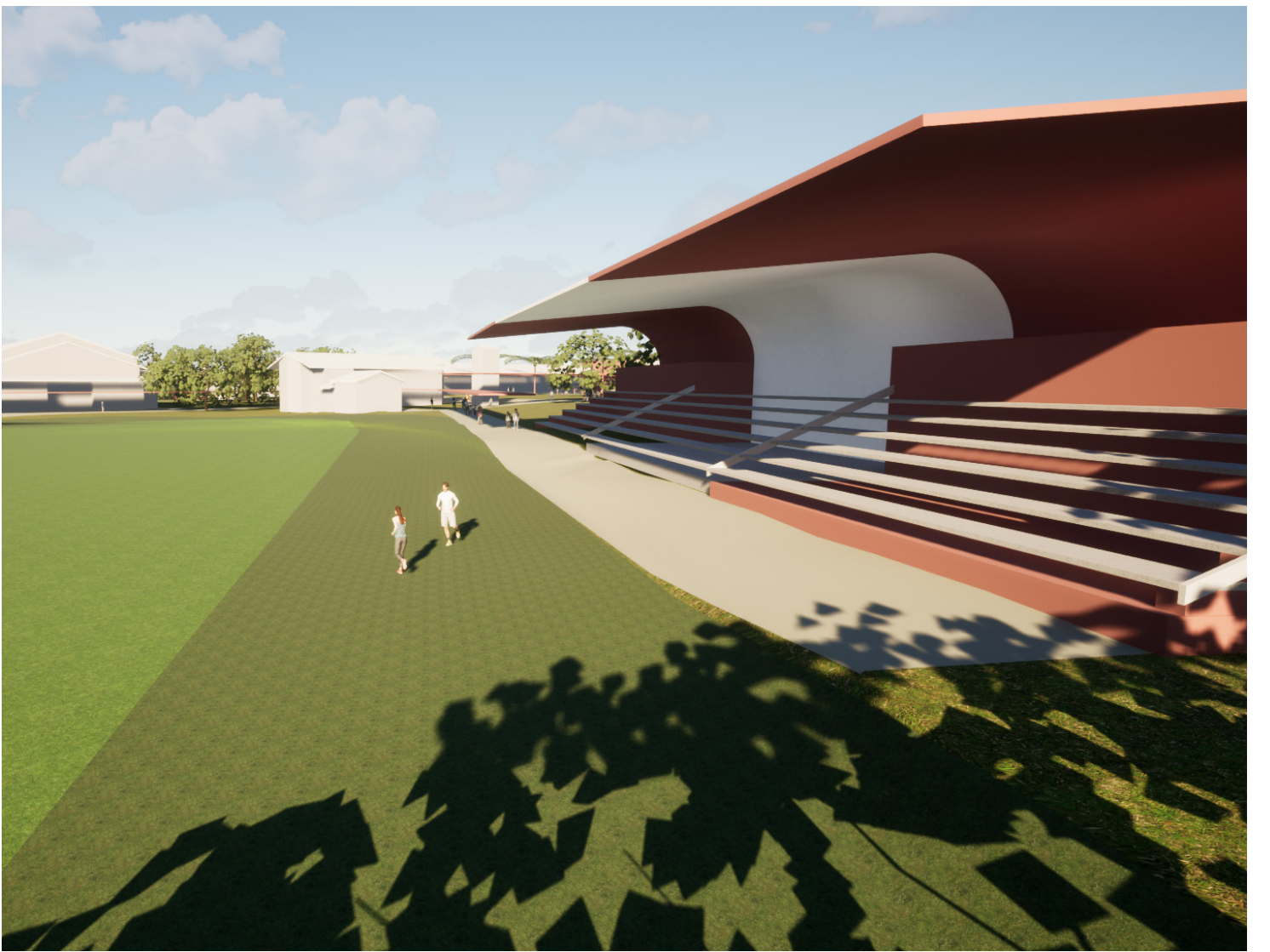
The master plan aims to consolidate All Souls St Gabriels School to ‘One Campus’ while recognising and enhances the existing open feel of the campus. This can be achieved by creating distinct entrances for Junior School, Senior School and Boarding, improving wayfinding and signage throughout the campus, upgrading site services and staff facilities throughout the entire campus.

SENIOR SCHOOL

The vision for this precinct is to provide a new library and student hub which will create a central gathering space for students and connecting the various precincts in the campus. The master plan also incorporates new and refurbished classrooms across the campus.

SPORTING + OUTDOORS

The master plan looks to further develop the existing sporting precinct of the college by adding new classrooms, tennis courts, spectator seating and storage adjacent to the Gym, multi-purpose hall and pool. The master plan also aims to expand O’Keeffe oval to include a running track and increased grandstand seating and amenities.



ALL SOULS ST GABRIELS SCHOOL MASTER PLAN

HARTE STREET ENTRY



JUNIOR SCHOOL ENTRY



ink
duck



All Souls St Gabriels School
CHARTERS TOWERS

SPORTS
PRECINCT



BOARDING

