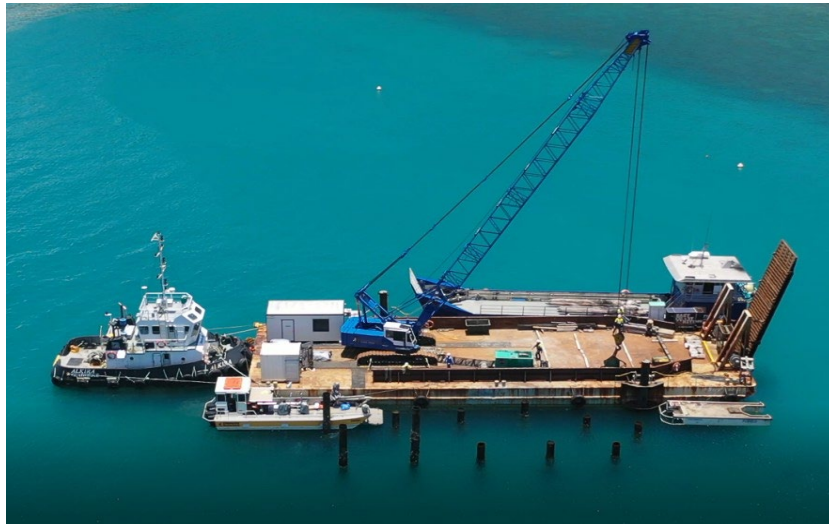




ALKIRA

Built in 2011 the Alkira is a towing/ pusher tug type vessel. Versatile and very compact with a 10.5 tonne bollard pull and low fuel consumption thanks to her Kort nozzles and shallow draft hull design. Alkira was built for the primary role of handling dumb barges. This can be achieved via pushing using the coupling winches or towing from the removable towing hook. She is also fitted with a 5 tonne anchor handling winch on the aft deck.



Vessel Specifications

Vessel Dimensions

LOA 14.2m

Beam- 6m

Operating Draft 2.4m

Clear Working Deck 6 sqm

Machinery

Main Engines 2x 405hp Yanmar

Aux Engines- 2x 34kva Yanmar

Bow Thruster nil

Deck Equipment 2x 3ton, 1x 5ton deck winches, 1x removable tow hook

Accommodation

Total Berths 2

No. of Cabins 2

Shower and Toilet 1 of each

Galley Fully equipped

Survey/Class

Class Built to NK

Survey AMSA 2C

Frequency Annually