

HINCHINBROOK SHIRE COUNCIL

DRFA PROGRAM BETTERMENT PROJECTS

QUABBAS ROAD

Date: 1-11-2022

Name: Luke Panzenbock

Signature: 

DRAWING INDEX

DRAWING NUMBER	DRAWING NAME	REVISION
0794-C-300	COVER SHEET, LOCALITY & DRAWING SCHEDULE	0
0794-C-301	NOTES, TYPICAL SECTIONS AND DETAILS	0
0794-C-302	SETOUT PLAN & SETOUT TABLES	0
0794-C-303	GENERAL ARRANGEMENT AND LONGSECTION	0
0794-C-304	QUABBAS ROAD CROSS SECTIONS SHEET 1 OF 2	0
0794-C-305	QUABBAS ROAD CROSS SECTIONS SHEET 2 OF 2	0
0794-C-306	EROSION AND SEDIMENT CONTROL PLAN	0

SURVEY DATUM
PSM 78048
E 409085.524
N 7945051.963
RL22.043
GDA 94 ZONE 55



LOCALITY PLAN

NTS



DBYD Enquiry Date: 4/08/2022
DBYD Job Number: 32465493

FOR CONSTRUCTION

24 OCTOBER 2022

CONFLICTS WITH SERVICES

Service location shall be confirmed on site with relevant Authorities prior to construction work commencing. During construction, no work shall be carried out within 3.0m of any service without first contracting the relevant Authority.



0 50 100m
SCALE 1:2500 (A1)

SITE PLAN
SCALE 1:2500

REVISIONS	No.	BY	DATE	DESCRIPTION	HORIZ. DATUM	GDA94 ZONE 55	CERTIFICATION
					VERT. DATUM	AHD	
					DRG. FILE	DATE	
	0	B.L.	24.10.22	FOR CONSTRUCTION	DESIGN	B.LANGTREE	05.08.22
					DRAWN	C.JOY	05.08.22

These designs and drawings are copyright and are not to be used or reproduced without the written permission of LANGTREE CONSULTING PTY LTD (ACN 29 611 368 024). The contents of this drawing are electronically generated, are confidential and may only be used for the purpose for which they were intended. This is an uncontrolled document issued for information purposes only, unless the checked sections are signed and approved. Figured dimensions take precedence over scale. Do not scale from this drawing.



m 0400 699 979
e brett@langtreeconsulting.com.au

HINCHINBROOK SHIRE COUNCIL

DRFA PROGRAM BETTERMENT PROJECTS
QUABBAS ROAD CH5 - CH298
COVER SHEET, LOCALITY & DRAWING SCHEDULE

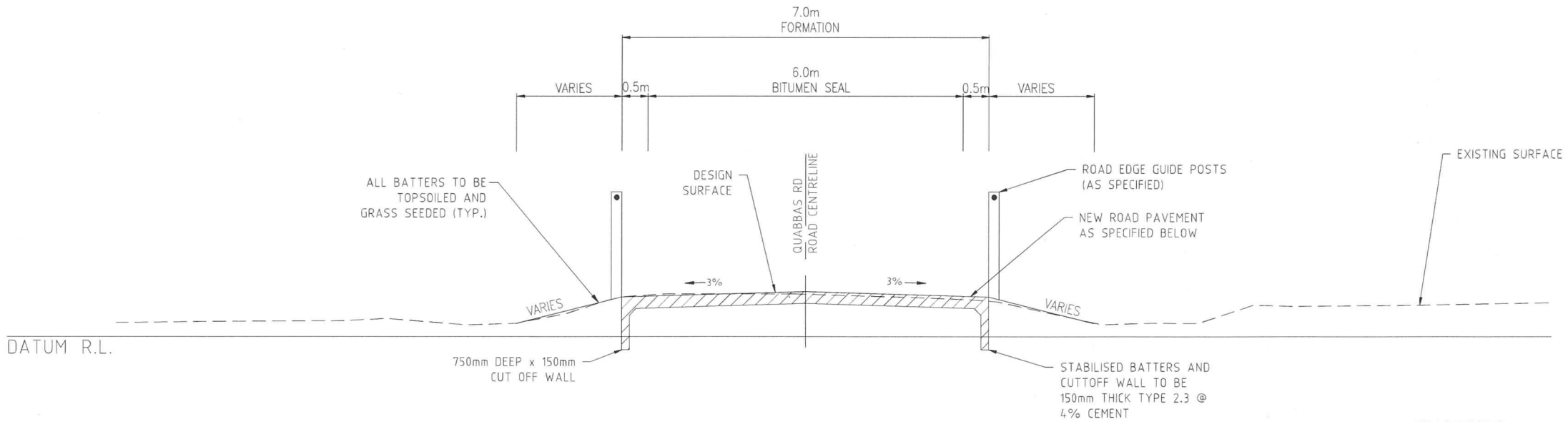
SCALE AS SHOWN

SHEET 1 OF 7

REVISION 0

DRG No. 0794-C-300

Date: 1-11-22
Name: Luke Panzenbock
Signature: [Signature]



GENERAL NOTES:

GENERAL:

- ALL WORKS AND MATERIALS MUST BE IN ACCORDANCE WITH CURRENT LOCAL AUTHORITY POLICIES, SPECIFICATIONS, STANDARD DRAWINGS AND AUSTRALIAN STANDARDS.
- THE CONTRACTOR MUST TAKE ALL NECESSARY MEASURES TO PROTECT NEARBY PROPERTY OWNERS FROM DUST POLLUTION DURING ALL PHASES OF WORKS. FINISHED AREAS OF EARTHWORKS MUST BE KEPT WATERED WHERE NECESSARY UNTIL A SATISFACTORY GRASS COVER IS ACHIEVED.
- ALL CONSTRUCTION WORKS ARE TO BE JOINED NEATLY TO EXISTING SURFACE.
- PUBLIC UTILITIES – DESPITE THE POSITION OF PUBLIC UTILITIES, FITTINGS, PIPES, POLES, MANHOLES, ETC MAY BE INDICATED ON THE DRAWINGS, NO RESPONSIBILITY WILL BE ACCEPTED BY THE PRINCIPAL FOR THE ACCURACY OF THE REPRESENTATION OR THE OMISSION THEREOF.
- LOCATION AND LEVEL OF EXISTING SERVICES AND STRUCTURES HAS BEEN PLOTTED FROM AVAILABLE RECORDS AND IS TO BE CONSIDERED INDICATIVE ONLY. THE CONTRACTOR MUST ACCURATELY LOCATE THESE ON SITE PRIOR TO COMMENCING WORKS AND MUST PROTECT ALL EXISTING SERVICES DURING CONSTRUCTION. ANY DAMAGE TO EXISTING SERVICES MUST BE REPAIRED AT THE CONTRACTORS EXPENSE.
- VEGETATION OUTSIDE WORK AREAS MUST NOT BE DISTURBED UNLESS SPECIFICALLY AUTHORIZED BY THE SUPERINTENDENT.
- IT IS THE RESPONSIBILITY OF THE CONTRACTOR TO COMPLY WITH ALL RELEVANT LEGISLATION.
- IT IS THE RESPONSIBILITY OF THE CONTRACTOR TO MAINTAIN THE STABILITY OF ANY TEMPORARY WORKS ON THE SITE.
- THE CONTRACTOR MUST CONFIRM THE ACCURACY OF ALL SET OUT AND CONFIRM ALL LEVELS WITH THE SUPERINTENDENT PRIOR TO COMMENCING CONSTRUCTION.
- THE SURVEY LEVEL DATUM IS AHD AND THE CO-ORDINATE DATUM IS LOCAL AS PROVIDED BY HINCHINBROOK SHIRE COUNCIL.
- THESE DRAWINGS ARE TO BE READ IN CONJUNCTION WITH THE LOCAL AUTHORITY SPECIFICATIONS AND THE PROJECT SPECIFICATIONS. IN THE EVENT OF A DISCREPANCY, REFER TO THE SUPERINTENDENT FOR CLARIFICATION.
- THESE DRAWINGS MUST BE READ IN CONJUNCTION WITH DRAWINGS PREPARED BY OTHER RELATED CONSULTANTS, ALL PROJECT SPECIFICATIONS AND WITH SUCH OTHER WRITTEN INSTRUCTIONS AS MAY BE ISSUED DURING THE COURSE OF THE WORK. ALL THE DISCREPANCIES MUST BE REFERRED TO THE SUPERINTENDENT FOR DECISION BEFORE PROCEEDING WITH THE WORK.
- ALL DIMENSIONS RELEVANT TO SETTING OUT AND OFF-SITE WORK MUST BE AS INDICATED ON THESE DRAWINGS AND MUST BE VERIFIED BY THE CONTRACTOR BEFORE CONSTRUCTION AND/OR FABRICATION IS COMMENCED. THE ENGINEERS DRAWINGS MUST NOT BE SCALED, UNLESS SPECIFICALLY NOTED OTHERWISE.
- DURING CONSTRUCTION THE CONTRACTOR MUST BE RESPONSIBLE FOR MAINTAINING PROPOSED AND EXISTING WORKS IN A STABLE CONDITION AND ENSURING NO PART MUST BE OVER STRESSED UNDER CONSTRUCTION ACTIVITIES.
- SAFETY REQUIREMENTS MUST BE IN ACCORDANCE WITH THE REQUIREMENTS OF THE WORK PLACE, HEALTH AND SAFETY ACT.
- THE APPROVAL FOR A SUBSTITUTION MAY BE SOUGHT FROM THE SUPERINTENDENT BUT IS NOT AN AUTHORISATION FOR A VARIATION. ANY VARIATION MUST BE APPROVED BY THE SUPERINTENDENT BEFORE WORK COMMENCES.
- THE ACCESS FOR THE WORK SITE MUST BE AS INDICATED ON THE CONTRACT OR AS APPROVED BY THE SUPERINTENDENT AND THE LOCAL AUTHORITIES. THE CONTRACTOR MUST OBTAIN ALL NECESSARY AND RELEVANT PERMITS. IT IS THE CONTRACTORS RESPONSIBILITY TO CONSTRUCT AND MAINTAIN ACCESS AS REQUIRED TO ALL PARTS OF CONTRACTORS WORK AREA.
- THE CONTRACTORS COMPOUND MUST BE LOCATED AS APPROVED BY SUPERINTENDENT.
- CONTRACTOR MUST UNDERTAKE ALL WORKS IN PROXIMITY TO EXISTING SERVICES AND INFRASTRUCTURE IN ACCORDANCE WITH THE RELEVANT UTILITY / AUTHORITY POLICIES AND PROCEDURES.
- BEFORE PROCEEDING WITH THE WORK ANY DISCREPANCIES IN THE CONTRACT DOCUMENTS SHALL BE REFERRED FOR DECISION TO THE ENGINEER.
- ALL MATERIALS & WORKMANSHIP SHALL BE IN ACCORDANCE WITH THE SPECIFICATIONS AND THE LOCAL AUTHORITY'S BY-LAWS.
- THE CONTRACTOR IS RESPONSIBLE TO OBTAIN ALL RELEVANT APPROVALS PRIOR TO COMMENCEMENT OF WORKS.

SIGNAGE AND LINEMARKING:

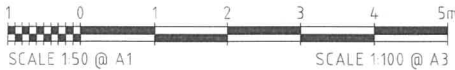
- PRIOR TO INSTALLATION OF SIGNS, THE CONTRACTOR SHALL CHECK FOR POSSIBLE SERVICE CONFLICTS, AND IF PRESENT, NOTIFY THE RELEVANT SERVICE AUTHORITY.
- ALL SETOUT TO BE CONFIRMED ON SITE.
- ALL EXISTING SIGNS NOT CONFLICTING WITH PROPOSED WORKS ARE TO REMAIN. EXISTING SIGNS CONFLICTING MUST BE RELOCATED TO SUIT NEW ROADWORKS.
- ALL PAVEMENT MARKING AND SIGNAGE IS TO BE CONSTRUCTED IN ACCORDANCE WITH THE CURRENT QUEENSLAND MANUAL OF UNIFORM TRAFFIC CONTROL DEVICES.
- NEW PAVEMENT MARKING SHALL JOIN SMOOTHLY TO EXISTING WHERE REQUIRED.
- RRPMS: ALL PAVEMENT MARKINGS AND LINES TO BE SUPPLEMENTED WITH RETRO-REFLECTIVE RAISED PAVEMENT MARKERS IN ACCORDANCE WITH THE CURRENT "MANUAL OF UNIFORM TRAFFIC CONTROL DEVICES-PART 2". PLACEMENT TO BE IN ACCORDANCE WITH MUTCD.
- ALL EXISTING REDUNDANT SIGNS TO BE REMOVED/RELOCATED
- PROVIDE ROAD EDGE POSTS IN ACCORDANCE WITH MANUAL OF UNIFORM TRAFFIC CONTROL DEVICES (MUTCD).

SCOUR PROTECTION AT PIPE OUTFALLS		
PIPE SIZE - DIA (mm)	D ₅₀ (mm)	THICKNESS (mm)
375	200	300
450	200	300
525	300	300
600	300	500
675	300	500
>750	300	500

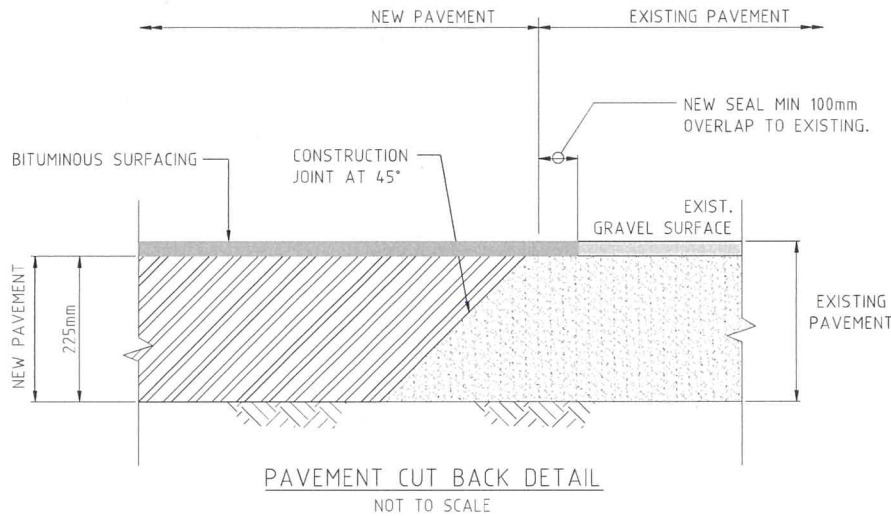
VEGETATION PROTECTION:

- PRIOR TO CLEARANCE WORKS COMMENCING ON SITE, A JOINT INSPECTION MUST BE UNDERTAKEN TO IDENTIFY SELECTED TREES AND / OR SHRUBS WHICH ARE TO REMAIN UNDISTURBED. THESE MUST BE MARKED BY THE SUPERINTENDENT WITH COLOURED TAPE OR SIMILAR MARKS. THE CONTRACTOR MUST TAKE CARE NOT TO DAMAGE OR REMOVE ANY OF THESE TREES AND SHRUBS IN CARRYING OUT THE WORKS OF THE CONTRACT.
- UNLESS DIRECTED BY A PROJECT ARBORIST / ECOLOGIST, WHEN WORKING WITHIN 4m OF TREES, RUBBER OR HARDWOOD GIRDLES SHOULD BE CONSTRUCTED WITH 1.8m BATTENS CLOSELY SPACED AND ARRANGED VERTICALLY FROM GROUND LEVEL. GIRDLES MUST BE STRAPPED TO TREES PRIOR TO CONSTRUCTION AND REMAIN UNTIL COMPLETION.
- ANY TREE LOPPING REQUIRED SHOULD BE UNDERTAKEN BY A PROFESSIONAL ARBORIST.
- THE CONTRACTOR IS NOT TO DISTURB OR CUT VEGETATION WITHOUT THE SUPERINTENDENTS APPROVAL.
- THE CONTRACTOR MUST EMPLOY A PROFESSIONAL ARBORIST WHO MUST ASSIST WITH THE WORK TO PROTECT TREES (IF NECESSARY).

NOTE: QUABBAS ROAD PAVEMENT THICKNESS HAS BEEN DETERMINED FROM HSC SUPPLIED AADT = 28 AND THE RECOMMENDED DESIGN CBR OF 6.0%, REFER PGI GEOTECHNICAL REPORT PGC1821000_4. CONTRACTOR TO CONFIRM THE PAVEMENT AND SEAL DESIGN PRIOR TO PLACEMENT OF ANY PAVEMENT LAYERS OR SEALING.



FOR CONSTRUCTION
24 OCTOBER 2022

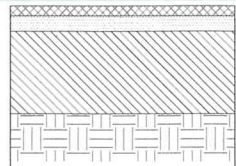


SPACING FOR GUIDE POSTS

CURVE RADIUS	SPACING (m)	
	ON OUTSIDE OF CURVE	ON INSIDE OF CURVE
<100	6	12
100-199	10	20
200-299	15	30
300-399	20	40
400-599	30	60
600-799	40	60

NOTE: APPLY 150m SPACING OF GUIDEPOSTS ON ALL STRAIGHTS. MAXIMUM SPACING OF 60m IN FOG PRONE AREAS.

1st COAT PRIMERSEAL AMC7 @ 2.0L/m² & 14mm @ 100m²/m³
2nd COAT BITUMEN SEAL S35E/S10E @ 1.4L/m² & 7mm @ 140m²/m³

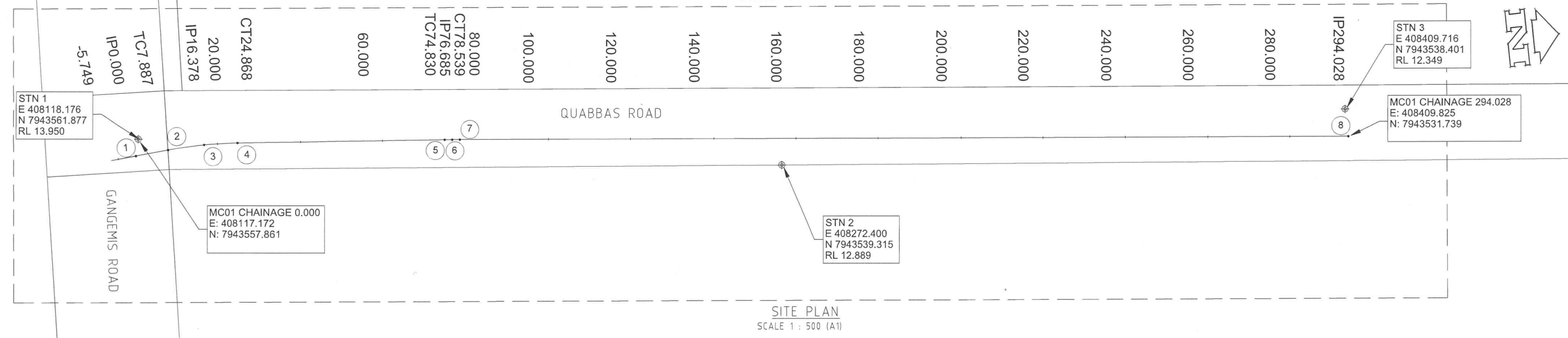


225mm BASE COURSE (TYPE 2.3 @ 4% CEMENT)
COMPACTED TO 100% MAXIMUM DRY DENSITY (STANDARD)
RECOMMENDED DESIGN SUBGRADE CBR 6.0%

COMPACTED SUBGRADE (TO BE PROOF ROLLED PRIOR TO LAYING ANY PAVEMENT) ASSUMED CBR = 6.0%

NEW ROAD PAVEMENT
NOT TO SCALE

REVISIONS					HORIZ. DATUM	GDA94 ZONE 55		CERTIFICATION			 m 0400 699 979 e brett@langtreeconsulting.com.au	HINCHINBROOK SHIRE COUNCIL				SCALE	AS SHOWN		
					VERT. DATUM	AHD			B. LANGTREE PPEQ 11932						SHEET	2 OF 7			
					DRG. FILE		DATE	COPYRIGHT ©	These designs and drawings are copyright and are not to be used or reproduced without the written permission of LANGTREE CONSULTING PTY LTD (ACN 28 611 388 024). The contents of this drawing are electronically generated, are confidential and may only be used for the purpose for which they are intended. This is an uncontrolled document issued for information purposes only, unless the checked sections are signed and approved. Figured dimensions take precedence over scale. Do not scale from this drawing.						REVISION	0			
	0	B.L	24.10.22	FOR CONSTRUCTION	DESIGN	B.LANGTREE	05.08.22												
	No.	BY	DATE	DESCRIPTION	DRAWN	C.JOY	05.08.22										DRG No.	0794-C-301	
												DRFA PROGRAM BETTERMENT PROJECTS							
												QUABBAS ROAD CH5 – CH298							
												TYPICAL SECTION AND DETAILS							



CONTROL LINE MC01 SETOUT TABLE

POINT NUMBER	CHAINAGE	TYPE	EASTING	NORTHING	LEVEL	Length	BEARING	RADIUS
1	0.000	IP	408117.172	7943557.861	13.922			
2	7.887	TC	408125.034	7943558.495	13.958		85°23'15.92"	
3	16.378	IP	408133.517	7943559.18	13.976	16.981		100
4	24.868	CT	408141.994	7943558.421	13.968		95°07'01.32"	
5	74.830	TC	408191.757	7943553.964	13.855		95°07'01.32"	
6	76.685	IP	408193.604	7943553.799	13.857	3.709		300
7	78.539	CT	408195.449	7943553.611	13.859		95°49'31.65"	
8	294.028	IP	408409.825	7943531.739	12.968		95°49'31.65"	

SURVEY CONTROL POINT TABLE

Point #	Easting	Northing	Level	Code
2259	411406.327	7942799.617	9.079	sm iron spike
12002	408118.176	7943561.877	13.950	STN
12003	408272.461	7943539.311	12.896	STN
12004	408409.774	7943538.428	12.353	STN
78084	409085.524	7945051.963	22.043	PSM

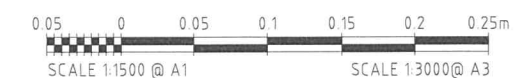
DESIGN APPROVED


Date: 1.11.22

Name: Luke Panzenbock

Signature:

FOR CONSTRUCTION
24 OCTOBER 2022



REVISIONS					HORIZ. DATUM	GDA94 ZONE 55	CERTIFICATION	
					VERT. DATUM	AHD	 B. LANGTREE RPEQ 11932	
					DRG. FILE	DATE	COPYRIGHT ©	
	0	B.L	24.10.22	FOR CONSTRUCTION	DESIGN	B.LANGTREE	05.08.22	These designs and drawings are copyright and are not to be used or reproduced without the written permission of LANGTREE CONSULTING PTY LTD (ACN 29 611 368 024). The contents of this drawing are electronically generated, are confidential and may only be used for the purpose for which they were intended. This is an uncontrolled document issued for information purposes only, unless the checked sections are signed and approved. Figured dimensions take precedence over scale. Do not scale from this drawing.
	No.	BY	DATE	DESCRIPTION	DRAWN	C.JOY	05.08.22	

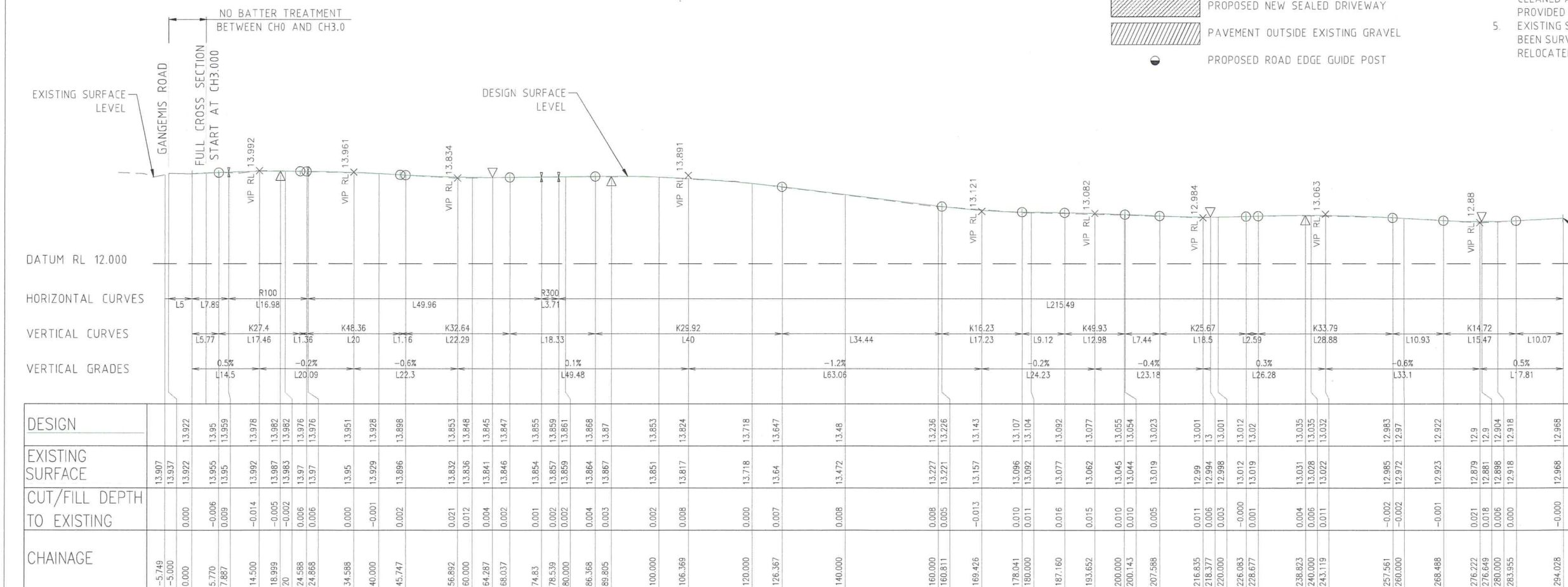
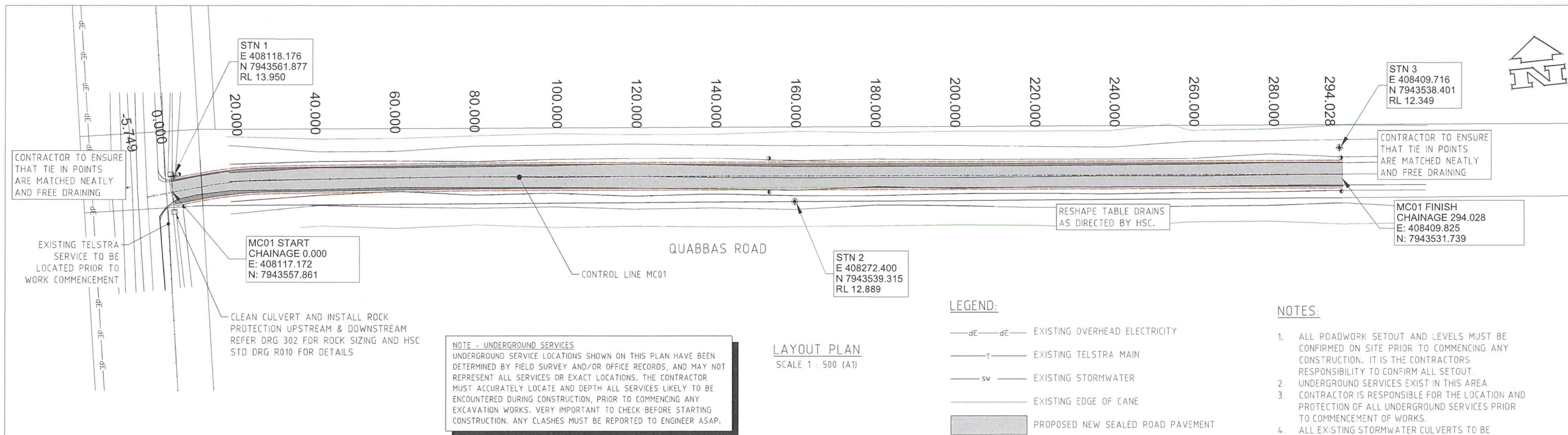
Langtree Consulting

m 0400 699 979
e brett@langtreeconsulting.com.au

HINCHINBROOK SHIRE COUNCIL

DRFA PROGRAM BETTERMENT PROJECTS
QUABBAS ROAD CH5 - CH298
SETOUT PLAN & SETOUT TABLES

SCALE	AS SHOWN
SHEET	3 OF 7
REVISION	0
DRG No.	0794-C-302



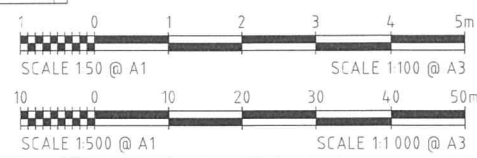
DESIGN APPROVED

Date: 1.11.22

Name: Luke Panzenback

Signature: [Signature]

FOR CONSTRUCTION
24 OCTOBER 2022



REVISIONS					HORIZ. DATUM		GDA94 ZONE55		CERTIFICATION		 <div>Langtree Consulting</div> <div>m 0400 699 979</div> <div>e brett@langtreeconsulting.com.au</div>	HINCHINBROOK SHIRE COUNCIL					SCALE	AS SHOWN				
					VERT. DATUM		AHD		B. LANGTREE PPEQ 11932								SHEET	4 OF 7				
						DRG. FILE				DATE		COPYRIGHT ©		DRFA PROGRAM BETTERMENT PROJECTS	QUABBAS ROAD CH5 – CH298	REVISION	0					
						DESIGN	B.LANGTREE			05.08.22		These designs and drawings are copyright and are not to be used or reproduced without the written permission of LANGTREE CONSULTING PTY LTD (ACN 29 811 368 024). The contents of this drawing are electronically generated, are confidential and may only be used for the purpose for which they were intended. This is an uncontrolled document issued for information purposes only, unless the checked sections are signed and approved. Figured dimensions take precedence over scale. Do not scale from this drawing.										
						DRAWN	C.JOY			05.08.22							GENERAL ARRANGEMENT AND LONGSECTION					
		No.	BY	DATE	DESCRIPTION										DRG No.	0794–C–303						

Date: 1-11-22
Name: Lulce Ponzenback
Signature: [Signature]

Centreline Data
 X = 408196.902
 Y = 7943553.462
 Z = 13.861
 DATUM RL 11.000

DESIGN	EXISTING SURFACE	OFFSET
13.265	13.271	-7.505
13.756	13.684	-3.500
13.771	13.734	-3.000
13.784	13.778	-2.554
13.861		0.000
13.780	13.758	2.697
13.711	13.718	3.000
13.756	13.652	3.500
13.090	13.092	7.896

Centreline Data X = 408176.986 Y = 794355.287 Z = 13.848 DATUM RL 11.500																		
DESIGN		13.379		13.743		13.758		13.771		13.848		13.775		13.758		13.743		13.228
EXISTING SURFACE		13.379		13.665		13.715		13.758		13.836		13.751		13.698		13.648		13.232
OFFSET		-6.811		-3.500		-3.000		-2.566		0.000		2.421		3.000		3.500		7.402

CHAINAGE 60

Centreline Data
 X = 408157.066
 Y = 7943557.071
 Z = 13.928
 DATUM RL 11,500

DESIGN	13.491	13.823	13.838	13.843	13.928	13.852	13.838	13.823	13.380
EXISTING SURFACE		13.774	13.821	13.838	13.929	13.836	13.777	13.715	13.38
OFFSET	-6.813	-3.500	-3.000	-2.824	0.000	2.537	3.000	3.500	6.656

[illegible][illegible]

<p>Centreline Data X = 408276.489 Y = 7943545.343 Z = 13.236 DATUM RL 10.500</p>			
DESIGN		12.597	13.131 13.146 13.167 13.236
EXISTING SURFACE		12.597	13.007 13.064 13.152 13.227
OFFSET		-7.568	-3.500 -3.000 -2.281 0.000
			13.171 13.157 13.156 13.500
			12.814 12.746

CHAINAGE 160

Centreline Data
 $X = 408256.592$
 $Y = 7943547.373$
 $Z = 13.480$
 DATUM RL 11.000

DESIGN	EXISTING SURFACE	OFFSET
12.800	12.8	-7.711
13.375	13.303	-3.500
13.390	13.348	-3.000
13.404	13.388	-2.551
13.480	13.472	0.000
13.390	13.366	0.000
13.382	13.387	0.255
13.375	13.359	0.500
12.792	12.807	7.933

EDGE OF EXISTING GRAVEL
WITH OFFSET FROM MC01

CHAINAGE 140

EG -3.02

MC01

-3%

EG -3.01

1 in -7.1

1 in -6.9

Centreline Data
X = 408236.696
Y = 7943549.403
Z = 13.718

DATUM RL 11.000

DESIGN	12.979	13.613	13.627	13.628	13.718	13.628	13.628	13.613	12.948
EXISTING SURFACE	12.979	13.576	13.628	13.629	13.718	13.622	13.622	13.559	12.964
OFFSET	0.003	0.500	0.018	0.001	0.000	0.008	0.000	0.500	0.004

CHAINAGE 120

EXISTING SURFACE LEVEL

DESIGN SURFACE LEVEL

Centreline Data
X = 408216.799
Y = 17943551.433
Z = 13.853

DATUM RL 11.000

1 in -7.6

EG -2.8

-3%

MC01

EG -2.8

-3%

1 in -6.4

DESIGN	13.173	13.748	13.763	13.769	13.853	13.769	13.748	13.036
EXISTING SURFACE	13.173	13.701	13.751	13.771	13.851	13.759	13.657	13.049

CHAINAGE 100

MC01 CROSS SECTIONS

HORIZONTAL SCALE 1 : 100 (A1)

Centreline Data
 X = 408375.973
 Y = 794353.193
 Z = 12.970
 DATUM RL 10.500

DESIGN	EXISTING SURFACE	OFFSET
12.282	12.29	-8.179
12.865	12.824	-3.500
12.880	12.868	-3.000
12.890	12.897	-2.659
12.970	12.972	0.000
12.881	12.887	2.944
12.880	12.881	3.000
12.865	12.828	3.500
12.379	12.375	8.022

CHAINAGE 260

Centreline Data
 $X = 408356.076$
 $Y = 7943537.223$
 $Z = 13.035$
 DATUM RL 10.500

DESIGN	12.349	12.930	12.945	12.959	13.035	12.945	12.930	12.417
EXISTING SURFACE	12.38	12.857	12.907	12.956	13.028	12.945	12.896	12.427
OFFSET	-7.568	-3.500	-3.000	-2.511	0.000	2.979	3.500	7.954

CHAINAGE 240

Centreline Data
 X = 408336.179
 Y = 7943539.253
 Z = 13.001
 DATUM RL 10.500

DESIGN	EXISTING SURFACE	OFFSET
12.415	12.414	-7.124
12.896	12.829	-3.500
12.911	12.875	-3.000
12.929	12.931	-2.383
13.001	12.998	0.000
12.912	12.892	2.966
12.911	12.89	3.000
12.896	12.851	3.500
12.476	12.478	7.944


[illegible]

CHAINAGE 200

Centreline Data
 X = 408296.386
 Y = 7943543.313
 Z = 13.104
 DATUM RL 10.500

DESIGN	EXISTING SURFACE	OFFSET
12.497	12.493	580
12.999	12.979	500
13.014	12.97	000
13.034	13.025	304
13.104	13.092	000
13.021	13.04	62
13.014	13.026	000
12.999	12.996	000
12.701	12.702	63

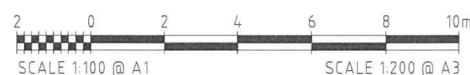
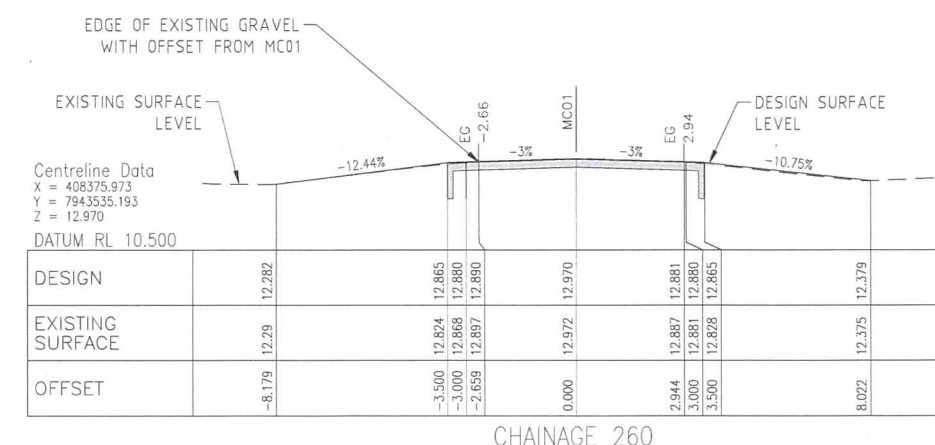
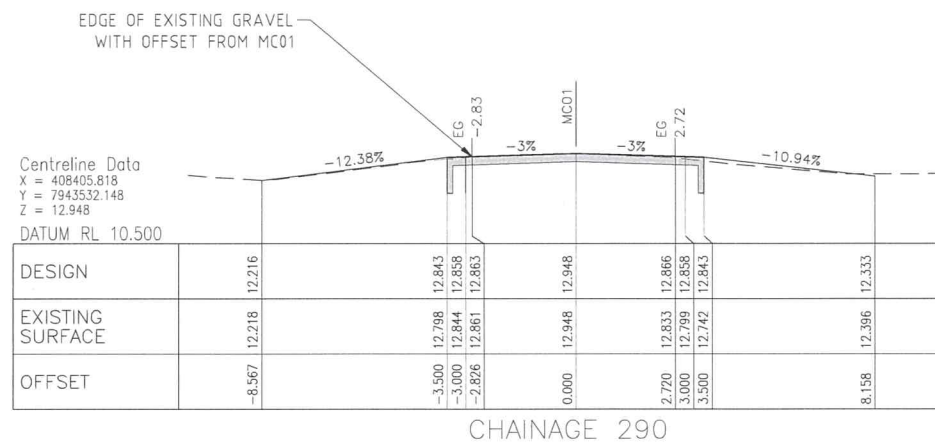
CHAINAGE 180	7.3	3.5	3.0	2.7	0.0	-2	-3	-3	-7
--------------	-----	-----	-----	-----	-----	----	----	----	----

REVISIONS					HORIZ. DATUM	GDA94 ZONE 55		CERTIFICATION  B. LANGTREE RPED 11932
					VERT. DATUM	AHD		
					DRG. FILE		DATE	COPYRIGHT © These designs and drawings are copyright and are not to be used or reproduced without the written permission of LANGTREE CONSULTING PTY LTD (ACN 59 611 368 024). The contents of this drawing are electronically generated, are confidential and may only be used for the purpose for which they were intended. This is an uncontrolled document issued for information purposes only, unless otherwise stated. All sections are signed and approved. Figured dimensions take precedence over scale. Do not scale from this drawing.
	0	B.L.	24.10.22	FOR CONSTRUCTION	DESIGN	B.LANGTREE	05.08.22	
No.	BY	DATE	DESCRIPTION	DRAWN	C.JOY	05.08.22		



DRFA PROGRAM BETTERMENT PROJECTS
QUABBAS ROAD CH5 - CH298
CROSS SECTIONS SHEET 1 OF 2

SCALE	AS SHOWN			
SHEET	5 OF 7			
REVISION	0			
DRG No.	0794-C-304			



FOR CONSTRUCTION

24 OCTOBER 2022

MC01 CROSS SECTIONS
HORIZONTAL SCALE 1 : 100 (A1)

DESIGN APPROVED

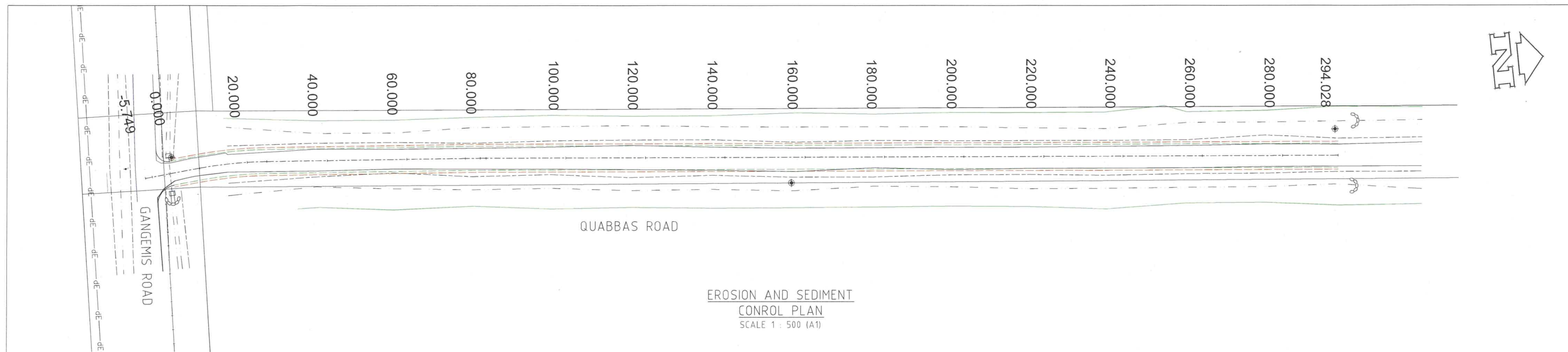
Date: 1.11.22

Name: Luke Panzenbock

Signature: *[Signature]*

REVISIONS					HORIZ. DATUM	GDA94 ZONE 55	CERTIFICATION <i>[Signature]</i> B. LANGTREE RPQ 11932	 m 0400 699 979 e brett@langtreeconsulting.com.au	HINCHINBROOK SHIRE COUNCIL	SCALE	AS SHOWN
					VERT. DATUM	AHD				SHEET	6 OF 7
					DRG. FILE	DATE				REVISION	0
	0	B.L	24.10.22	FOR CONSTRUCTION	DESIGN	B.LANGTREE	05.08.22			DRG No.	0794-C-305
	No.	BY	DATE	DESCRIPTION	DRAWN	C.JOY	05.08.22			DRFA PROGRAM BETTERMENT PROJECTS QUABBAS ROAD CH5 - CH298 CROSS SECTIONS SHEET 2 OF 2	

8565



EROSION AND SEDIMENT
CONTROL PLAN
SCALE 1 : 500 (A1)

EROSION AND SEDIMENT CONTROL NOTES:

1. DETAILS SHOWN ON THESE DRAWINGS REPRESENT PROPOSED MINIMUM REQUIREMENTS FOR ONE POSSIBLE METHOD TO ACHIEVE COMPLIANCE WITH LEGISLATION TO PREVENT ENVIRONMENTAL HARM FROM EROSION AND SEDIMENT TRANSFER OFF THE CONSTRUCTION SITE.
2. IT IS THE CONTRACTOR'S RESPONSIBILITY TO MONITOR SITE AND WEATHER CONDITIONS AND WATER QUALITY LEAVING THE SITE AND IMPLEMENT APPROPRIATE MEASURES TO COMPLY WITH THE STATUTORY REQUIREMENTS.
3. SHOULD THIS REQUIRE ADDITIONAL MEASURES OR ALTERATIONS TO THE DETAILS SHOWN ON THESE DRAWINGS THE CONTRACTOR IS TO PROVIDE WORK METHOD STATEMENTS AND/OR REVISED DRAWINGS TO THE ENGINEER CLEARLY DETAILING THE PROPOSED CHANGES AND PRIOR TO IMPLEMENTING THEM.
4. FOR STANDARD SEDIMENT CONTROL DEVICE DETAILS REFER TO IECA STANDARD DRAWINGS REFER TO TABLE BELOW.
5. MAINTAIN EROSION CONTROL MECHANISMS IN WORKING ORDER DURING ENTIRE CONSTRUCTION.
6. SEDIMENT LOSS FROM THE WORK SITE MUST BE MANAGED IN ACCORDANCE WITH CURRENT RELEVANT ENVIRONMENTAL GUIDELINES LEGISLATION. THIS WILL NECESSITATE THE USE OF APPROPRIATE EROSION AND SEDIMENT CONTROLS. THESE MUST BE IMPLEMENTED AT THE SITE ESTABLISHMENT PHASE AND MAINTAINED THROUGHOUT THE CONSTRUCTION PERIOD.
7. PRE-DISTURBANCE SOIL PROFILES AND COMPACTION LEVELS MUST BE REINSTITATED.
8. ALL VEHICLES EXITING FROM THE SITE ARE TO BE WASHED DOWN, CLEANED AND TREATED SO AS TO PREVENT MATERIAL BEING TRACKED OR DEPOSITED ON PUBLIC ROADS. INSTALL MEASURES FOR CONTROL OF WASH DOWN.
9. ALL DISTURBED AREAS MUST BE LEFT IN A STABLE CONDITION. REFER TO ROADWORKS AND DRAINAGE LAYOUTS AND TYPICAL SECTIONS AND DETAILS FOR BATTER TREATMENTS.
10. ALL VEGETATION WITHIN 4m OF GENERAL MACHINE OPERATION MUST BE PROTECTED WITH A STAR PICKET AND ROPE FENCE CONSTRUCTED AT LEAST 1m CLEAR OF THE VEGETATION.
11. EROSION AND SEDIMENT CONTROL IS THE RESPONSIBILITY OF THE CONTRACTOR WHO MUST COMPLY WITH COUNCIL REQUIREMENTS.
12. PROGRESSIVELY CLEAN UP ALL LITTER AND OIL LEAKS, AND PREVENT WASH OFF OF CEMENT SLURRY AND AC PRIME.
13. SUITABLE DUST CONTROL MEASURES TO BE IMPLEMENTED AT ALL TIMES.
14. THE CONTRACTOR MUST ADVISE THE SUPERINTENDENT ONCE THE EROSION AND SEDIMENT CONTROL MEASURES HAVE BEEN INSTALLED.
15. EROSION AND SEDIMENT CONTROL MEASURES MUST REMAIN IN PLACE UNTIL REHABILITATION MEASURES HAVE ESTABLISHED.

IECA STANDARD DRAWINGS	
SHEET NUMBER	SHEET TITLE
RCD 01	CHECK DAMS
CFB-01	COMPOST FILTER BERM

LEGEND:



CHECK DAMS OR APPROVED EQUIVALENT
SWALE DRAIN PROTECTION (AS DIRECTED BY HSC.)

DESIGN APPROVED

Date: 1-11-22

Name: Luke Panzenback

Signature: [Signature]

FOR CONSTRUCTION
24 OCTOBER 2022



REVISED	No.	BY	DATE	DESCRIPTION	HORIZ. DATUM	GDA94 ZONE 55	CERTIFICATION	COPYRIGHT © These designs and drawings are copyright and are not to be used or reproduced without the written permission of LANGTREE CONSULTING PTY LTD (ACN 29 611 368 024). The contents of this drawing are electronically generated, are confidential and may only be used for the purpose for which they were intended. This is an uncontrolled document issued for information purposes only, unless the checked sections are signed and approved. Figured dimensions take precedence over scale. Do not scale from this drawing.	m 0400 699 979 e brett@langtreeconsulting.com.au	Langtree Consulting	HINCHINBROOK SHIRE COUNCIL DRFA PROGRAM BETTERMENT PROJECTS QUABBAS ROAD CH5 - CH298 EROSION AND SEDIMENT CONTROL PLAN	SCALE	AS SHOWN
					VERT. DATUM	AHD	B. LANGTREE RPEQ 11932					SHEET	7 OF 7
0	B.L.	24.10.22		FOR CONSTRUCTION	DRG. FILE		DATE	DESIGN	B.LANGTREE	05.08.22		REVISION	0
					DRAWN	C.JOY	05.08.22					DRG No.	0794-C-306