

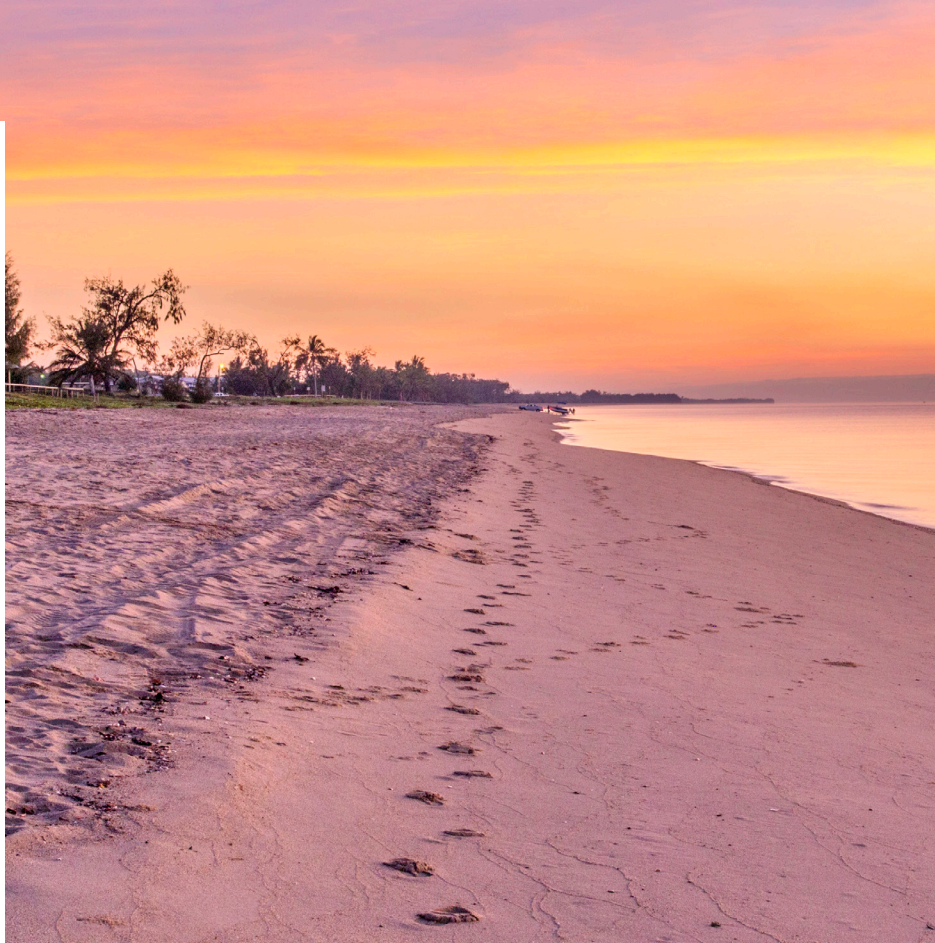
CONSULTATION SUMMARY

FORREST BEACH COASTAL RESERVES

Council recently conducted a survey for the community to have their say on the future management options of Lucinda, Taylors Beach and Forrest Beach coastal reserves.

The survey followed the recently completed community meetings (Lucinda - September 2021, Taylors Beach and Forrest Beach - April 2022) where participants were presented with foundational knowledge to understand how these special places came to be.

Throughout these workshops, the community was encouraged to add their own knowledge of each area by sharing their experiences.

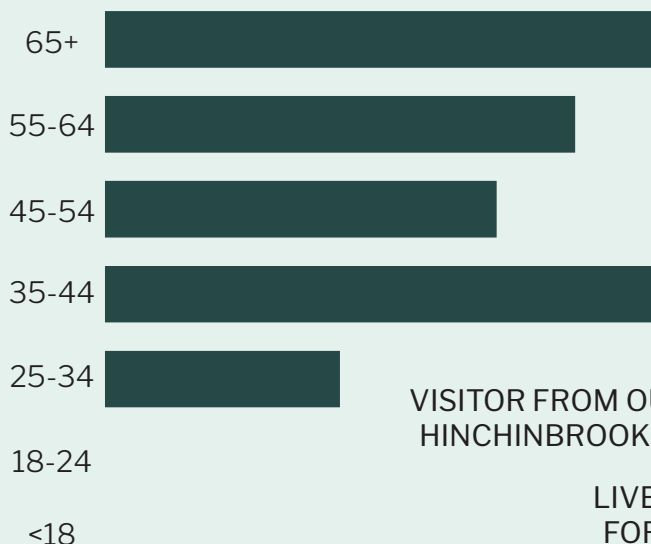


WHO GAVE FEEDBACK?

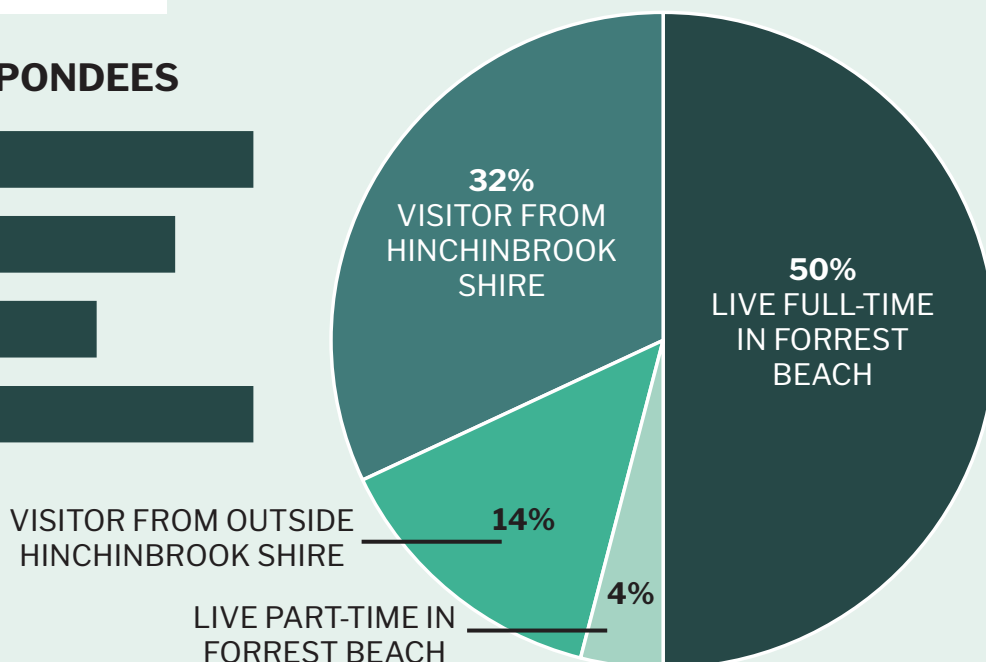
The survey was conducted for a period of three weeks, closing on Thursday 30 June 2022.

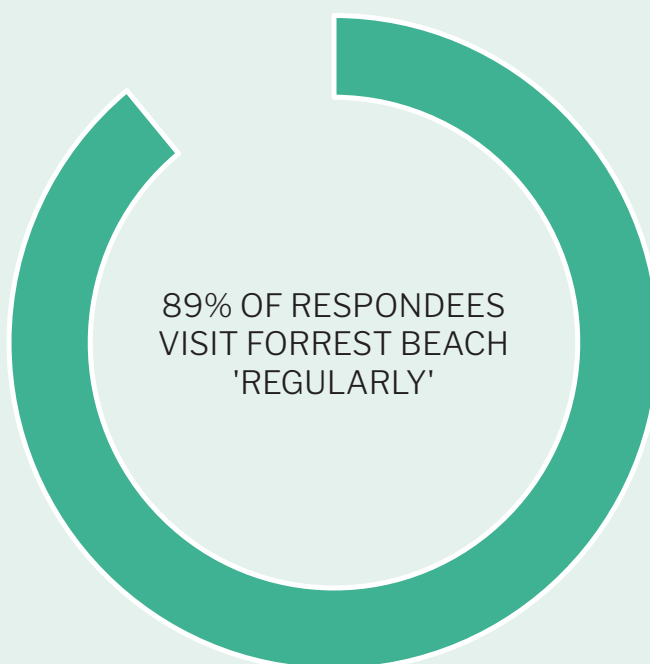
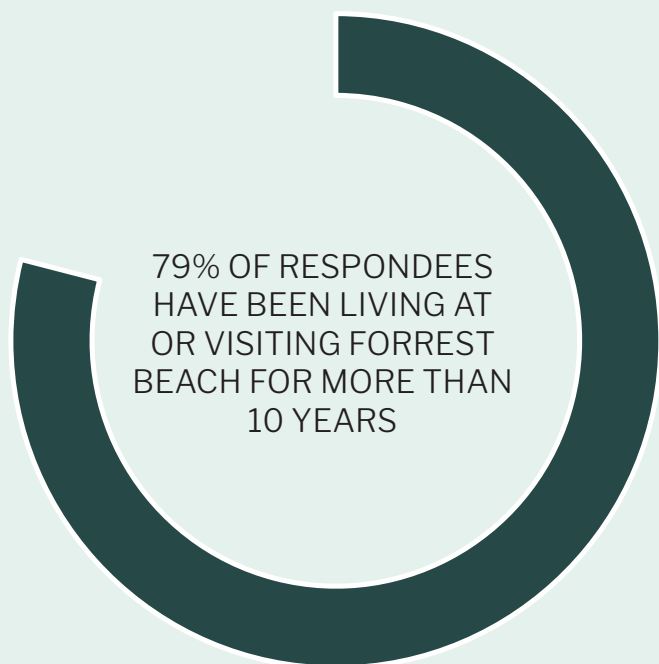
A total of 63 responses were received across the three localities, with Forrest Beach receiving 28 of these responses.

AGE OF RESPONDEES



RESIDENTIAL STATUS OF RESPONDEES

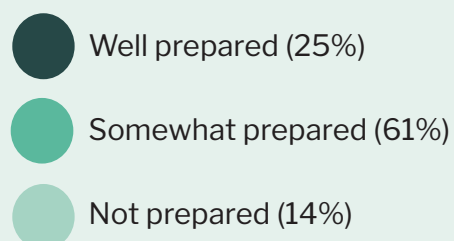
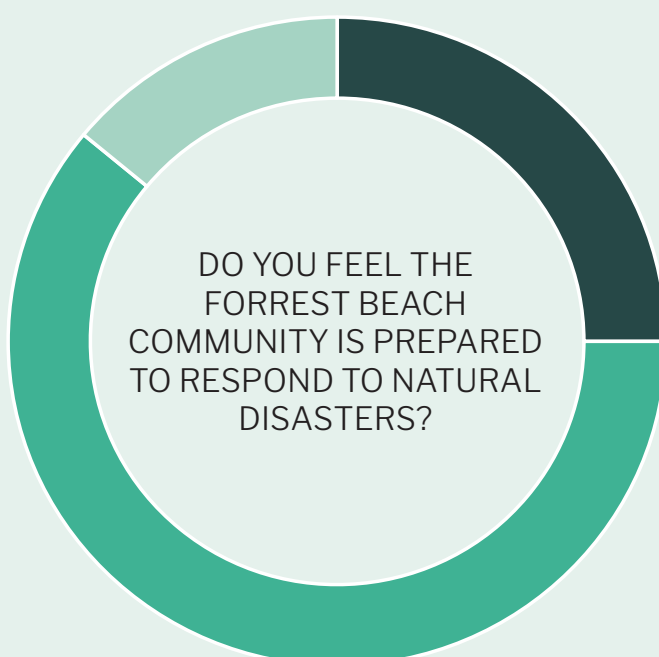




People visit Forrest Beach for a wide variety of reasons, with the most popular being:

- **Beach activities (i.e. running, sitting, relaxing on the sand);**
- **Local shops and restaurants; and**
- **Nature observation.**

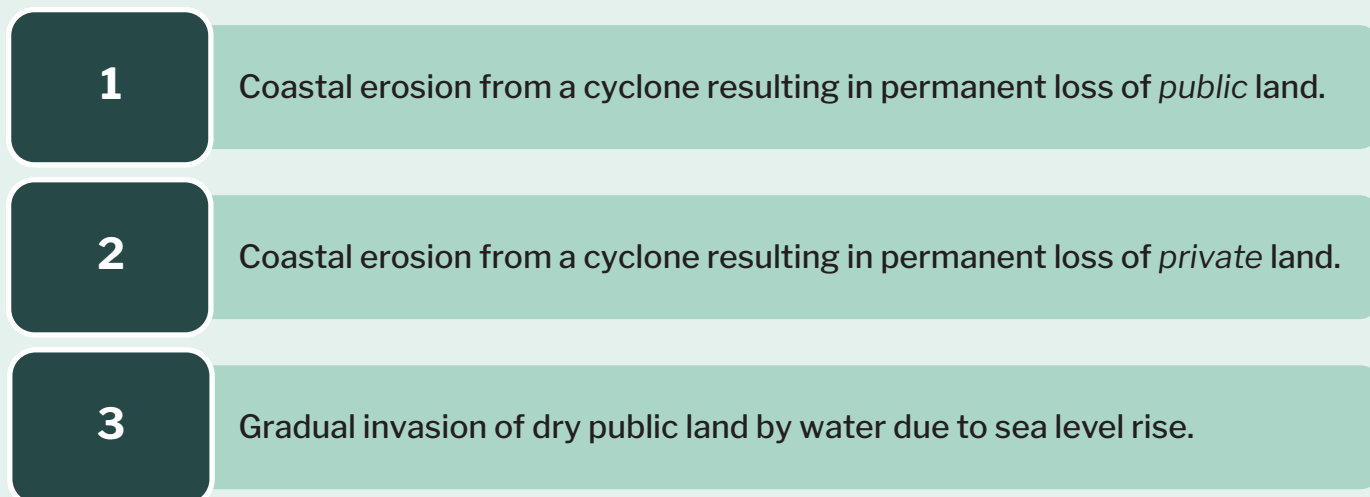
Parks and playgrounds were also popular.



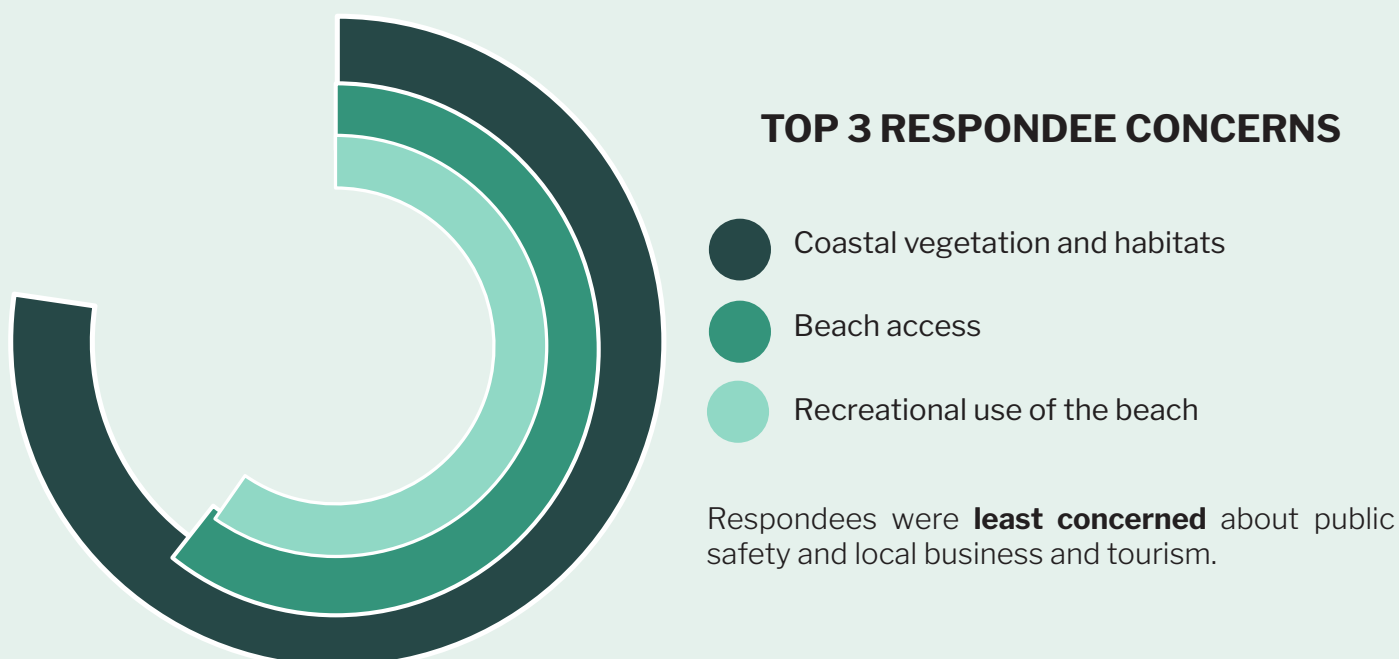
What do you value about Forrest Beach? Respondees top answers:

- **Scenic Values** - because it is beautiful;
- **Environmental Values** - because it allows me to connect with nature; and
- **Recreational Amenity** - because of the recreational uses it provides me.

TOP COASTAL CHANGES OF CONCERN



EFFECTS OF COASTAL CHANGE IN FORREST BEACH



COASTAL ADAPTATION OPTIONS

MOST SUPPORTED

1. Revegetate and stabilise the coastal dunes and foreshore;
2. Prevent/limit further development in vulnerable areas; and
3. Limit access to controlled access points, to support coastal vegetation growth.

LESS SUPPORTED

1. Do nothing;
2. A buried seawall (rock or sandbag) aligning with existing coastal protection structures to protect public foreshore areas; and
3. Ongoing (yearly or as needed) scraping of sand from other locations to replenish areas currently experiencing erosion.

RESPONDEES RANKED FACTORS TO CONSIDER WHEN MAKING DECISIONS ABOUT COASTAL ADAPTATION MEASURES

(1) MOST IMPORTANT TO (6) LEAST IMPORTANT

Overall Ranking

1. Maintaining coastal vegetation and natural ecosystems;
2. Maintaining access to the sandy beach or amenity and recreational use;
3. Maintaining grassed public open space areas;
4. Protecting and continuing to provide public facilities close to the coast;
5. Protecting private residences and properties; and
6. The financial cost of coastal adaptation actions.

WHAT RESPONDEES HAD TO SAY ABOUT AND/OR RECOMMEND FOR FORREST BEACH:

"Maintaining a balance between protecting natural ecosystems and maintaining lifestyle/recreational uses is very important to me. The two do not have to be managed in isolation to each other"

"Value the lifestyle and freedom to drive on the beach"

"I chose the town for its peaceful, coastal lifestyle and the almost untouched beauty. I am hopeful that climate will over-rule potential development greed in future years and foreshores will be cared for and maintained"

"It is a great, big slice of heaven"

"It is relatively untouched and apart from the vehicles destroying the dunes, it would not be hard to improve the resilience, and maintain a natural buffer into the future for everyone's benefit"

"It's a resource to protect, regardless of the cost"