





**LUXURY  
HAS ARRIVED**



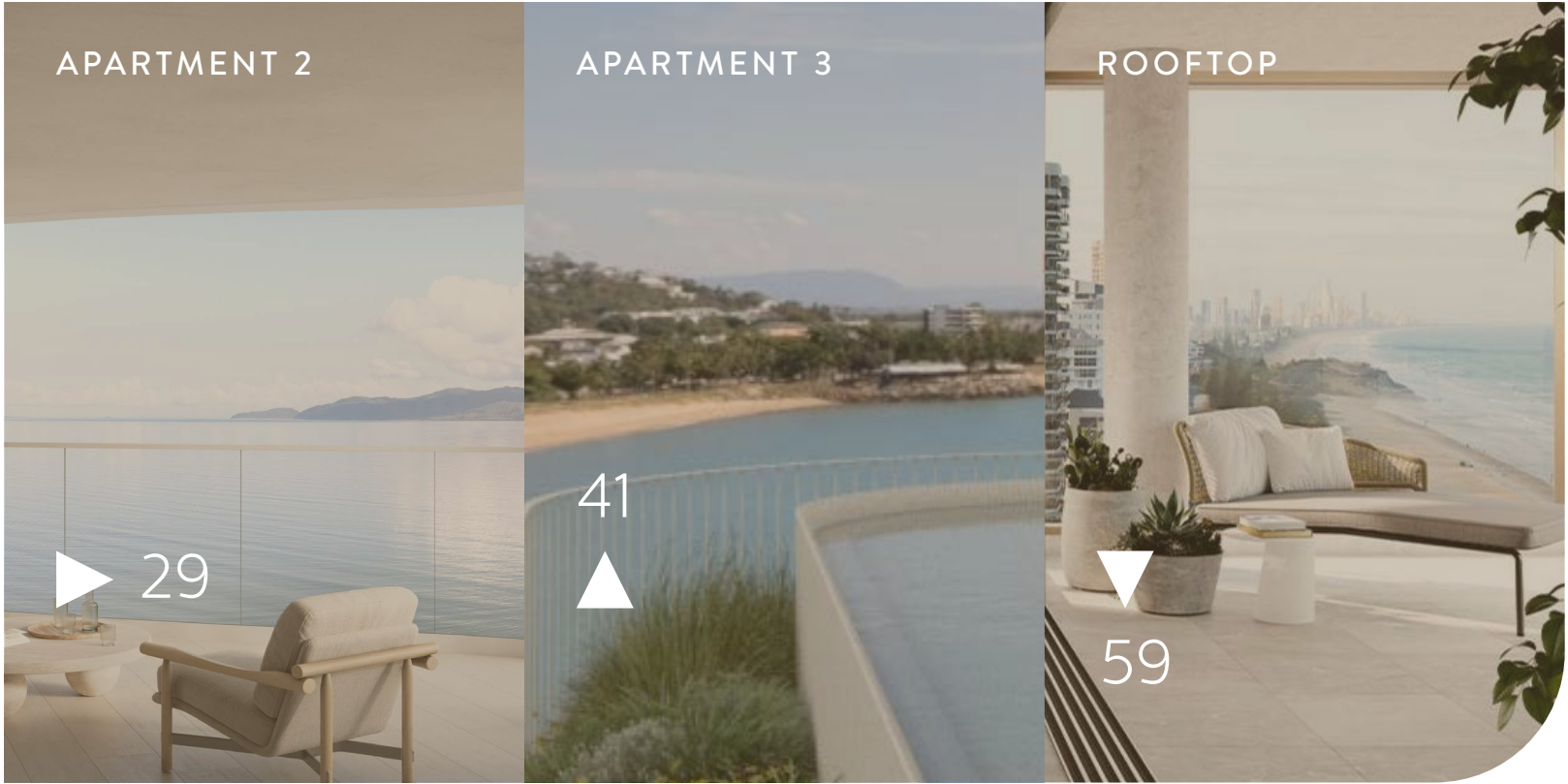
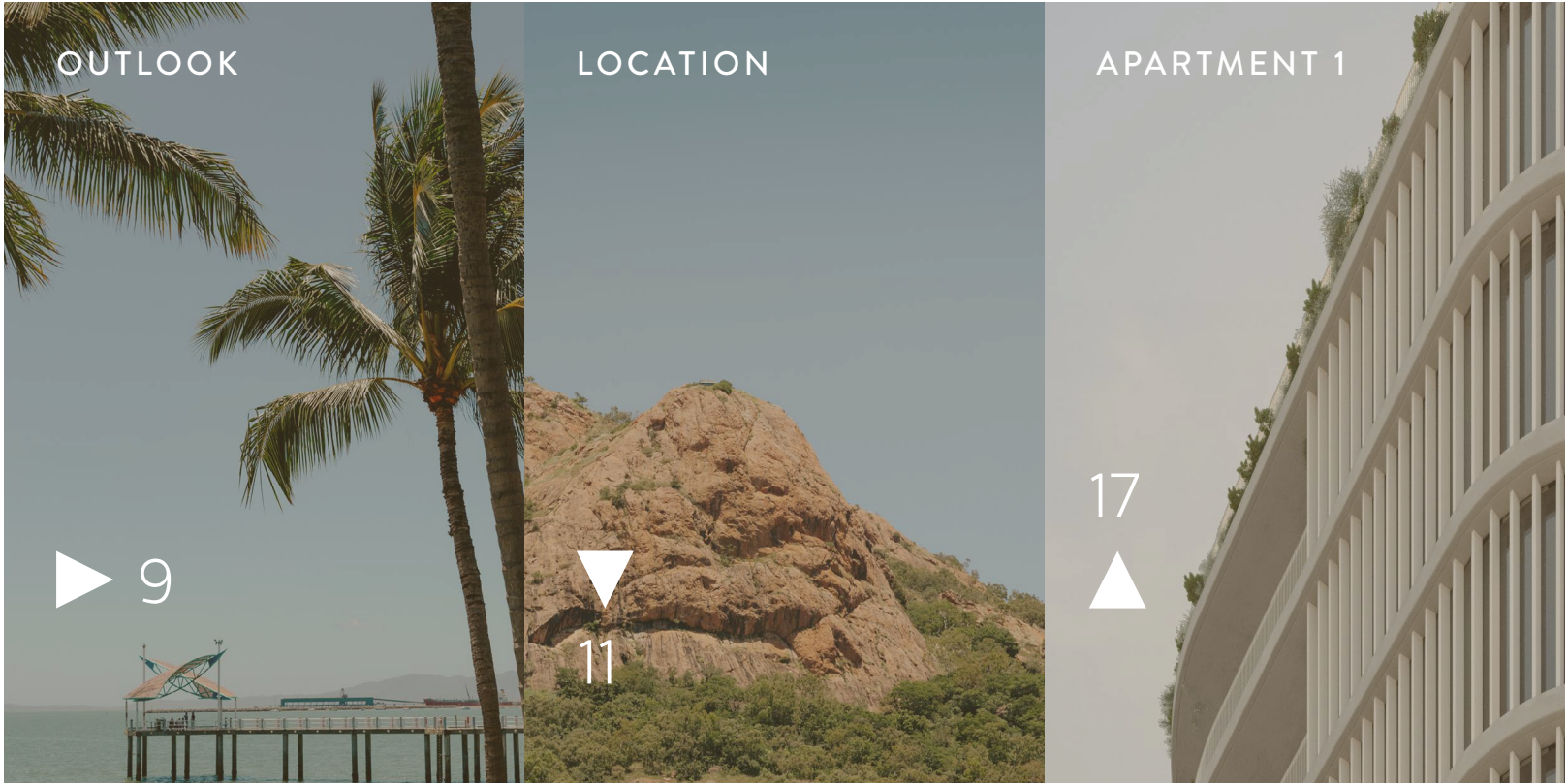
## LUXURY APARTMENTS

---

SETTING A NEW STANDARD FOR  
LUXURY LIVING IN THE NORTH.



CONTENTS



WATERFRONT LIVING REDEFINED

Marina Residences is positioned in one of the most breathtaking locations in Australia and provides a rare opportunity to live in one of Townsville’s most unique and exclusive waterfront settings.





## UNPARALLELED

It's iconic location delivers the very best views of the Breakwater Marina, The Strand and Magnetic Island.

Panoramic water views, serenity and modern luxury meet at Marina Residences.



# LOCATION MAP



MAGNETIC ISLAND



## AN ECLECTIC MIX OF LIFESTYLE OPPORTUNITY

- |   |                         |    |                             |    |                            |
|---|-------------------------|----|-----------------------------|----|----------------------------|
| 1 | JEZZINE BARRACKS        | 7  | BREAKWATER MARINA           | 13 | PALMER STREET PRECINCT     |
| 2 | ROCKPOOL                | 8  | ANZAC PARK                  | 14 | CBD                        |
| 3 | STRAND PARK             | 9  | THE VILLE RESORT-CASINO     | 15 | NORTH QUEENSLAND STADIUM   |
| 4 | GREGORY STREET PRECINCT | 10 | THE ENTERTAINMENT CENTRE    | 16 | QUEENS GARDENS             |
| 5 | ST JOSEPH'S SCHOOL      | 11 | MAGNETIC ISLAND FERRY       | 17 | TOWNSVILLE GRAMMAR SCHOOL  |
| 6 | TOBRUK POOL             | 12 | MAGNETIC ISLAND BARGE FERRY | 18 | CASTLE HILL WALKING TRACKS |

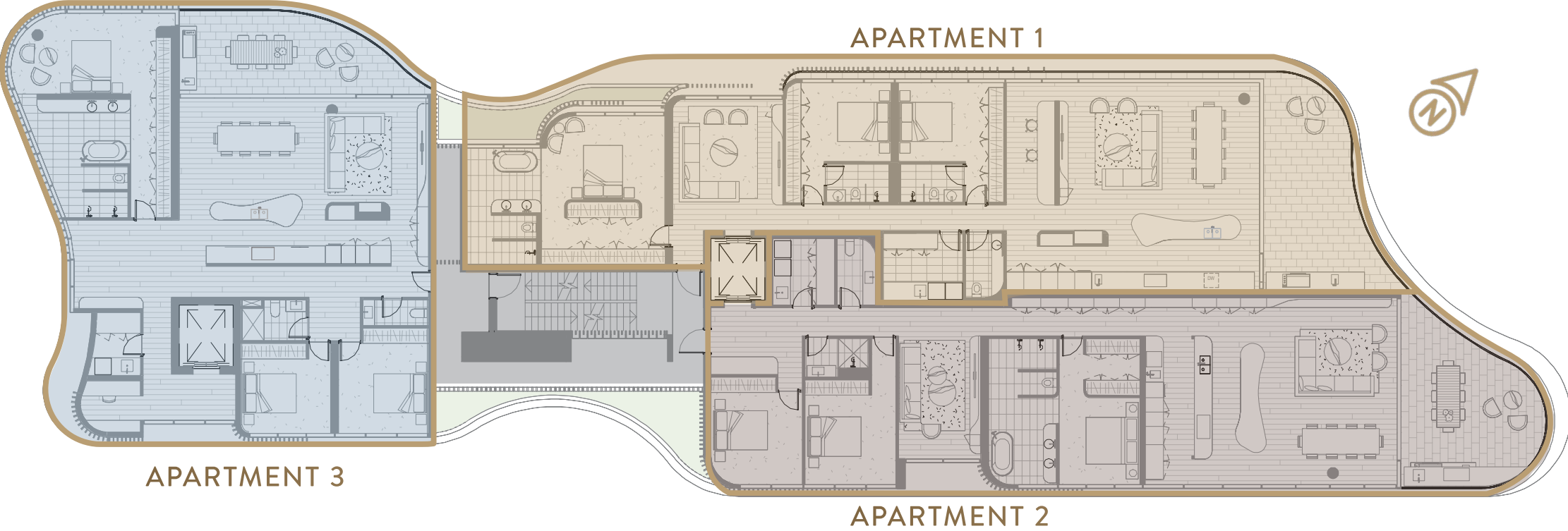




## TYPICAL LAYOUT LEVELS 3-7

---

LEVEL 3-7 LAYOUT



APARTMENT VIEW TO  
MAGNETIC ISLAND

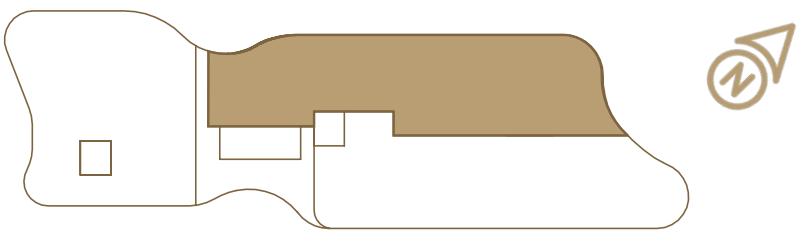
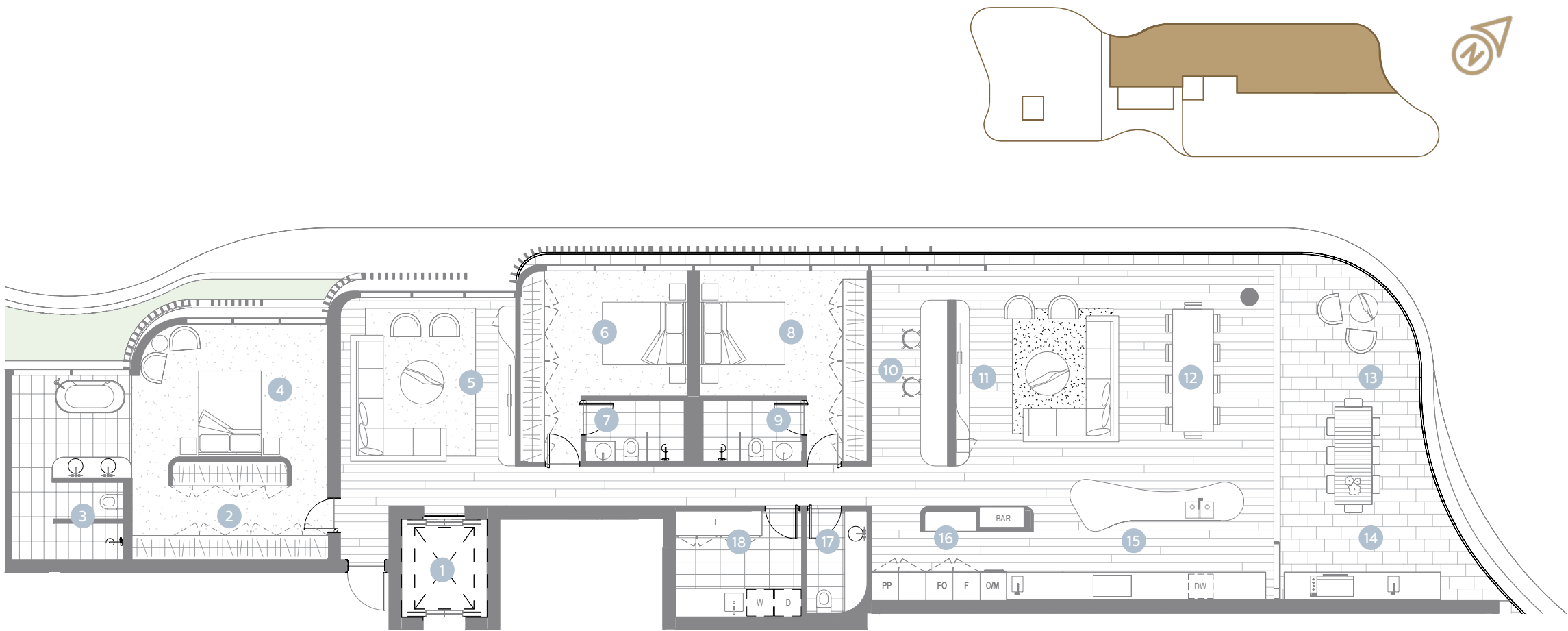






# APARTMENT 1 FLOORPLAN

---



LEVEL 3-7

TOTAL AREA:	254m <sup>2</sup>
INTERNAL AREA:	220m <sup>2</sup>
EXTERNAL AREA:	34m <sup>2</sup>

BEDROOM:	3
BATHROOM:	3.5
CAR SPACES:	LVL 3: 2
	LVL 4-7: 3

LEGEND

- |                       |                         |                    |
|-----------------------|-------------------------|--------------------|
| 1 LIFT                | 7 BEDROOM TWO ENSUITE   | 13 BALCONY         |
| 2 MASTER WALK IN ROBE | 8 BEDROOM THREE         | 14 BBQ AREA        |
| 3 MASTER ENSUITE      | 9 BEDROOM THREE ENSUITE | 15 KITCHEN         |
| 4 MASTER BEDROOM      | 10 OFFICE               | 16 BUTLER'S PANTRY |
| 5 MEDIA ROOM          | 11 LIVING               | 17 POWDER ROOM     |
| 6 BEDROOM TWO         | 12 DINING               | 18 LAUNDRY         |













## UNCOMPROMISING QUALITY

Marina Residences delivers a lifestyle experience like no other, with each residence unparalleled in its combination of spacious design and the pursuit of uncompromising quality.

MASTER SUITE  
APARTMENT 1





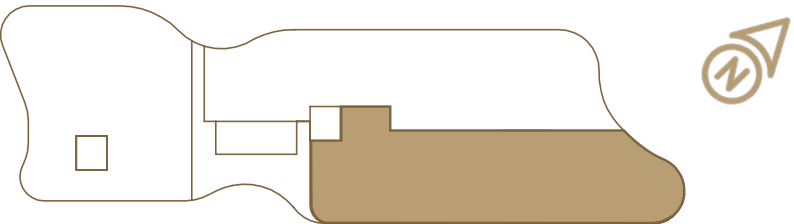
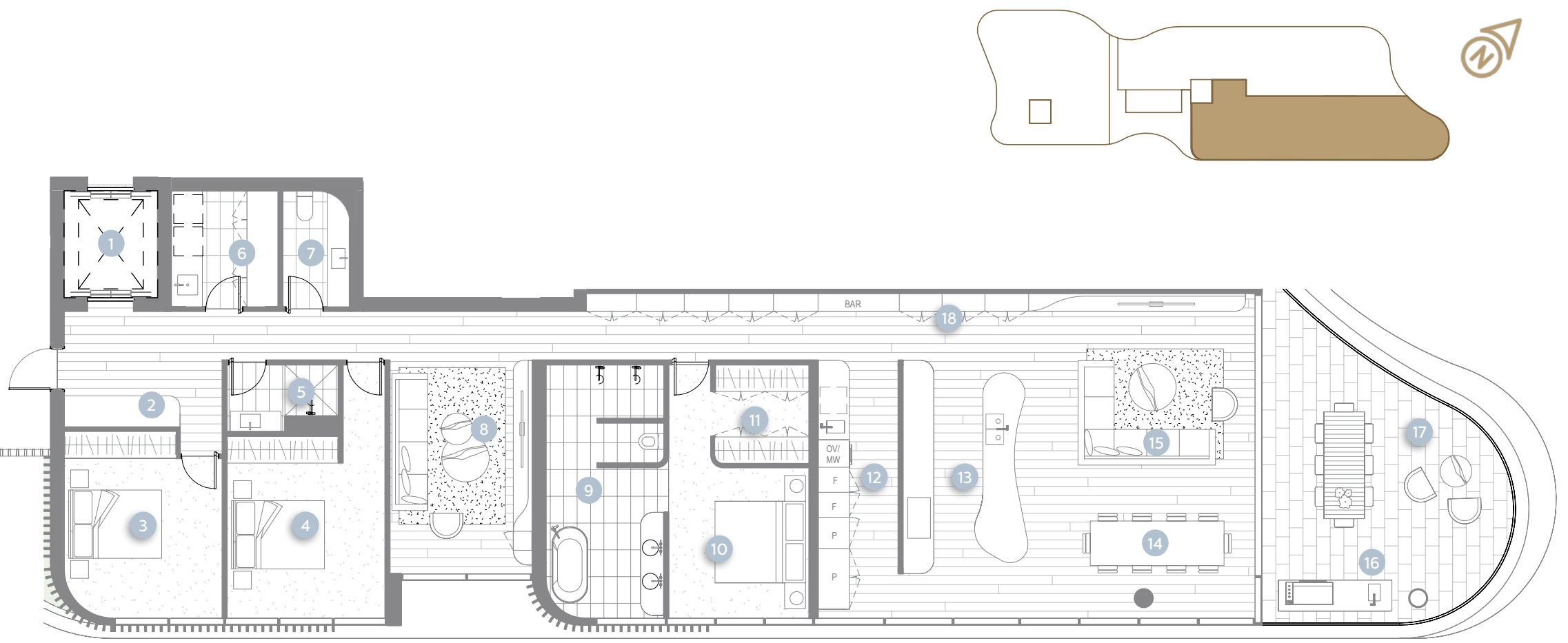


## APARTMENT 2 FLOORPLAN

---



# APARTMENT 2



## LEVEL 3-7

TOTAL AREA:	240m <sup>2</sup>
INTERNAL AREA:	210m <sup>2</sup>
EXTERNAL AREA:	30m <sup>2</sup>

BEDROOM:	3
BATHROOM:	2.5
CAR SPACES:	LVL 3: 2
	LVL 4-7: 3

### LEGEND

- |                 |                        |             |
|-----------------|------------------------|-------------|
| 1 LIFT          | 7 POWDER ROOM          | 13 KITCHEN  |
| 2 OFFICE        | 8 MEDIA ROOM           | 14 DINING   |
| 3 BEDROOM TWO   | 9 MASTER ENSUITE       | 15 LIVING   |
| 4 BEDROOM THREE | 10 MASTER SUITE        | 16 BBQ AREA |
| 5 MAIN BATHROOM | 11 MASTER WALK IN ROBE | 17 BALCONY  |
| 6 LAUNDRY       | 12 BUTLERS PANTRY      | 18 DISPLAY  |



BALCONY & MARINA VIEW  
APARTMENT 2





BALCONY, LIVING & KITCHEN  
APARTMENT 2





KITCHEN & LIVING  
APARTMENT 2





MASTER SUITE  
APARTMENT 2



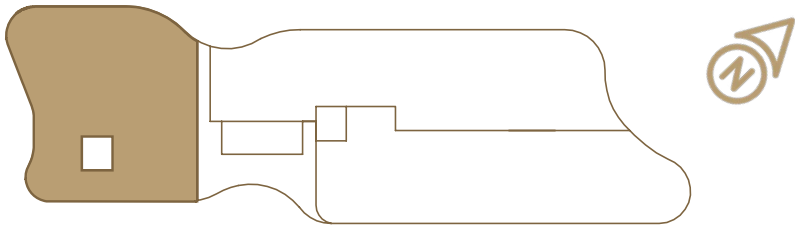
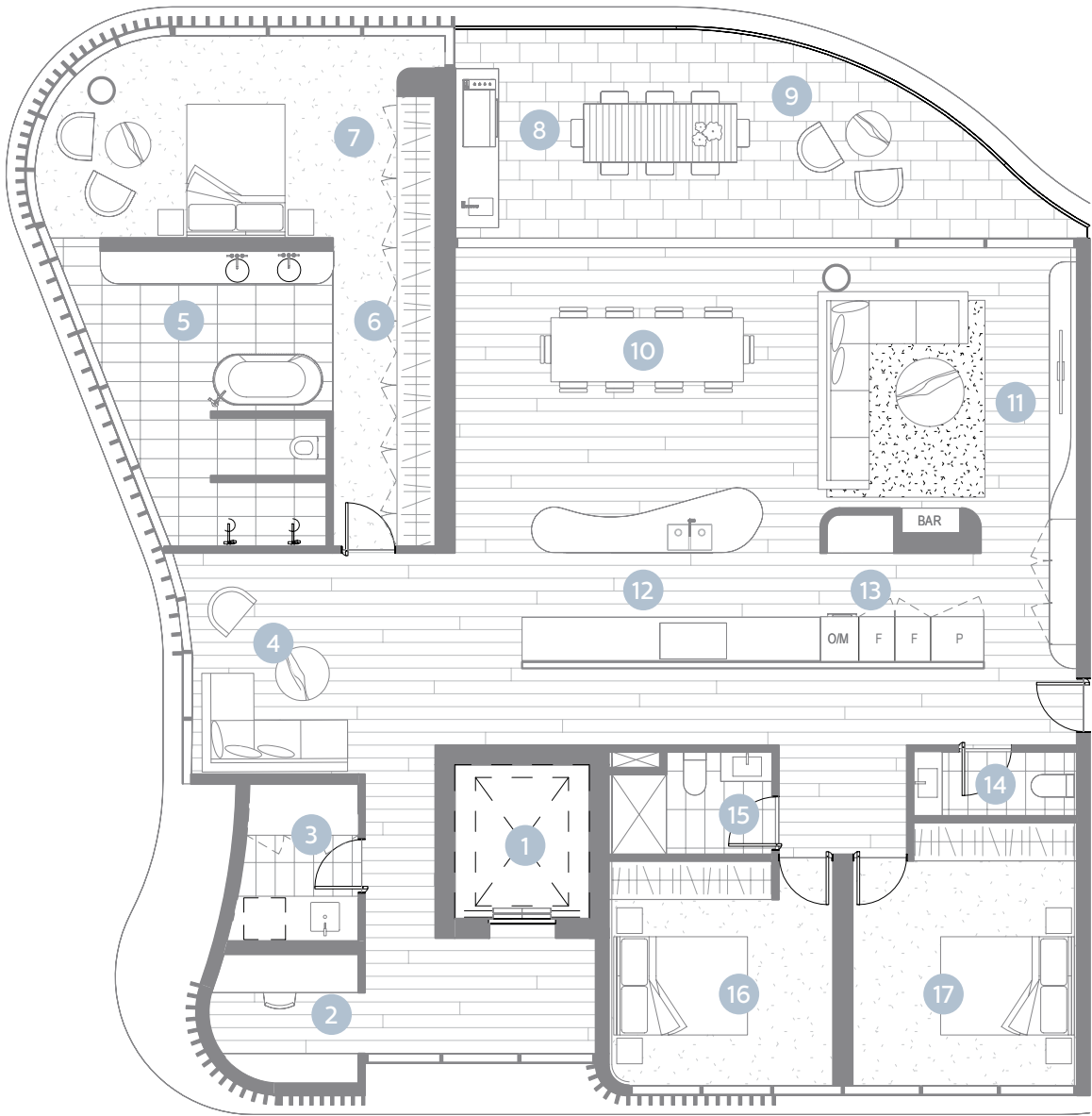




## APARTMENT 3 FLOORPLAN

---





LEVEL 3-7

TOTAL AREA:	225m <sup>2</sup>
INTERNAL AREA:	200m <sup>2</sup>
EXTERNAL AREA:	25m <sup>2</sup>

BEDROOM:	3
BATHROOM:	2.5
CAR SPACES:	2

LEGEND

- |                       |                  |                    |
|-----------------------|------------------|--------------------|
| 1 LIFT                | 7 MASTER BEDROOM | 13 BUTLER'S PANTRY |
| 2 OFFICE              | 8 BBQ AREA       | 14 POWDER ROOM     |
| 3 LAUNDRY             | 9 BALCONY        | 15 MAIN BATHROOM   |
| 4 SITTING ROOM        | 10 DINING        | 16 BEDROOM TWO     |
| 5 MASTER ENSUITE      | 11 LIVING        | 17 BEDROOM THREE   |
| 6 MASTER WALK IN ROBE | 12 KITCHEN       |                    |







DINING & KITCHEN  
APARTMENT 3







## SANCTUARY IN THE SKY

A unique blend of luxury finishes and state-of-the-art home technology, each residence has been carefully crafted to create the ultimate lifestyle experience.

BALCONY & LIVING  
APARTMENT 3







## MASTER YOUR SENSES

Considered design and contemporary styling come together to create a tranquil oasis to soothe the senses.

MASTER ENSUITE  
APARTMENT 3







## EMBRACE LUXURY

Rise everyday with a unique sense of tranquility, sophistication, and luxury.

MASTER SUITE  
APARTMENT 3



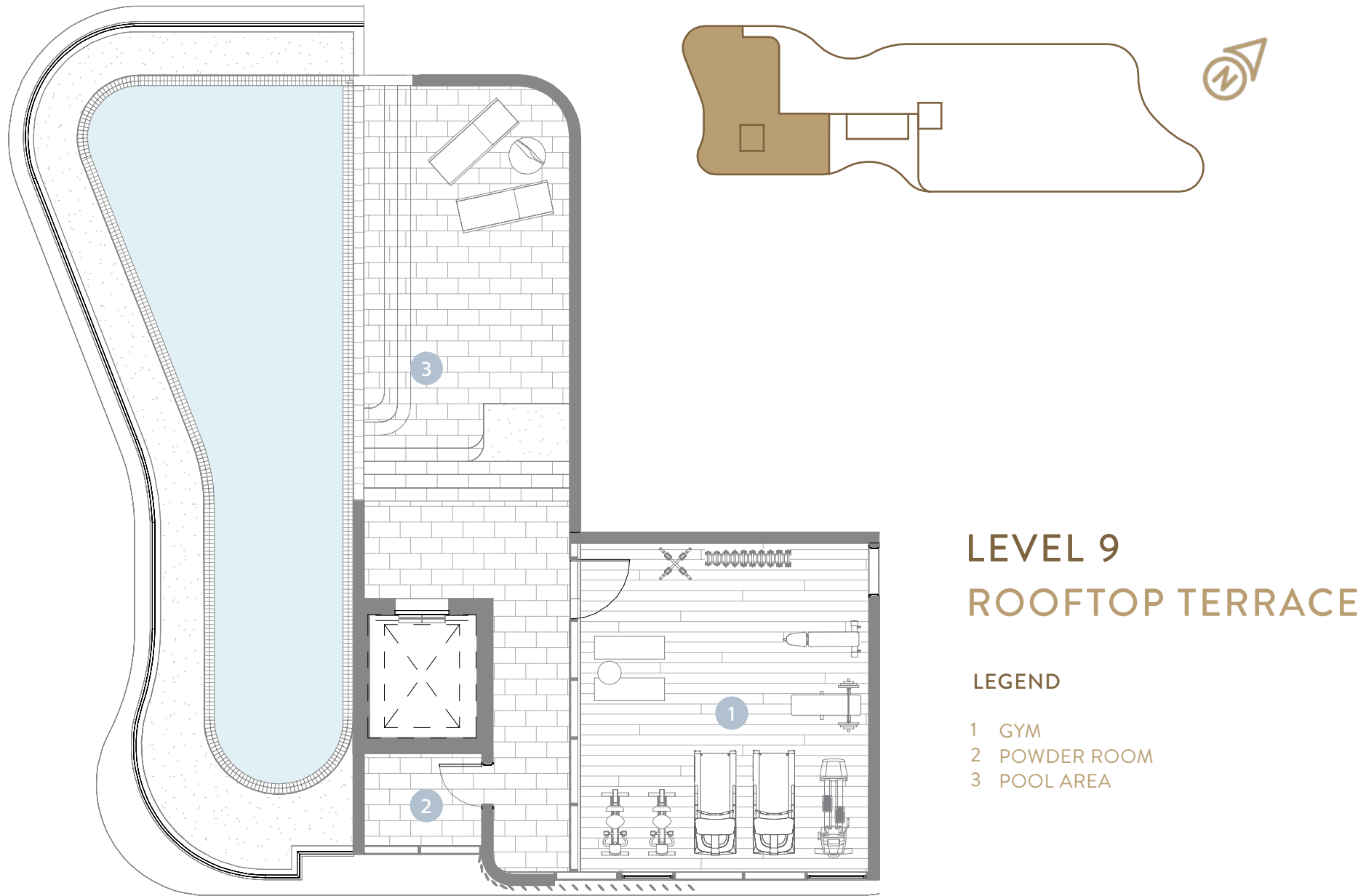








RECREATION





ROOFTOP POOL  
AMENITIES







## BUREAU PROBERTS

Renowned Brisbane based architect, bureau proberts, have been appointed to lead the design team for the apartment project, with the final form of the tower representing a significant step forward for the local property landscape and aligns with the North Queensland way of life.

The Marina Residences apartment tower ultimately aims to deliver an outcome which rivals the very best residential developments currently available throughout the country.



**DISCLAIMER:** Some of the information contained in this document is also dealt with in the form of sales agreement, which is available on request. Where there are any discrepancies or conflicts between the information and/or descriptions contained in this document and the form of sales agreement, the sales agreement form shall prevail.

The specification, illustrations, perspectives and information set out in this document are indicative only, subject to change, and do not form part of any sale agreement. Whilst all reasonable care has been taken in the preparation of this document, the vendor and its associates do not guarantee the accuracy of the information contained in it.

The sales agreement between the vendor and any purchaser constitutes the entire agreement between the parties and sets out the entire list of inclusions for the property purchased.

Any purchased should ensure all of its requirements are set out in the sale agreement.

All dimensions, floor areas, fittings, specifications, floor finishes, images and diagrams are indicative only and subject to change without notice. Furnishings, accessories and whitegoods are not included. Finished product may differ from that depicted. Garden areas do not form part of the apartment area and is not accessible from the apartment. Interested persons should carefully check plans in the contract and associated documents and make their own enquiries and rely on their own investigations and advice.

© Maidment Group. All rights reserved.







