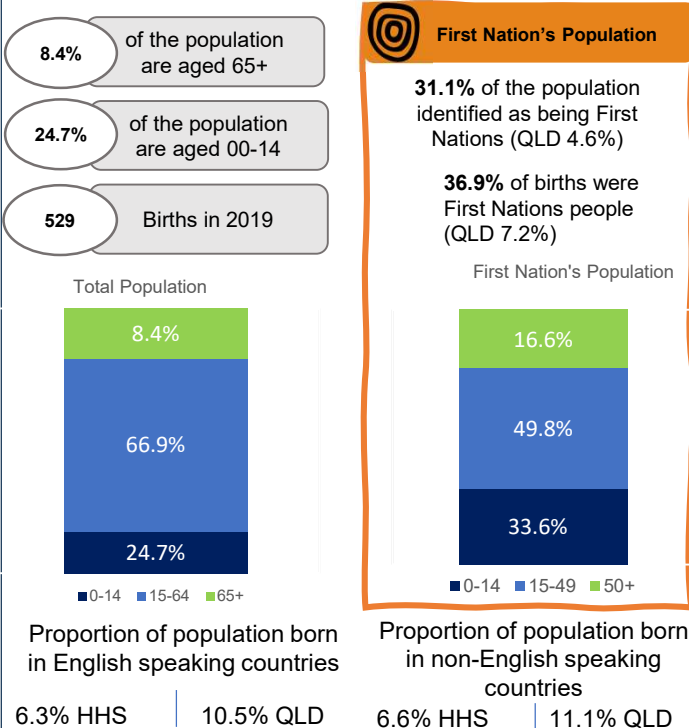


## Area Profile: Carpentaria, Mount Isa, Mount Isa Region, Far Central West, Northern Highlands

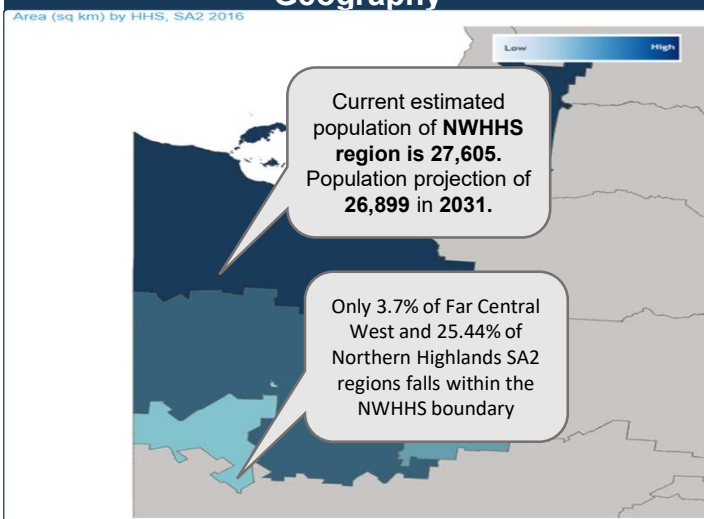
### North West Hospital & Health Service (NWHHS)

The NWHHS includes 2 SA3 and 5 SA2 regions. There are five acute care facilities across NWHHS with Mt Isa Hospital being the single Level 4 facility for the region.

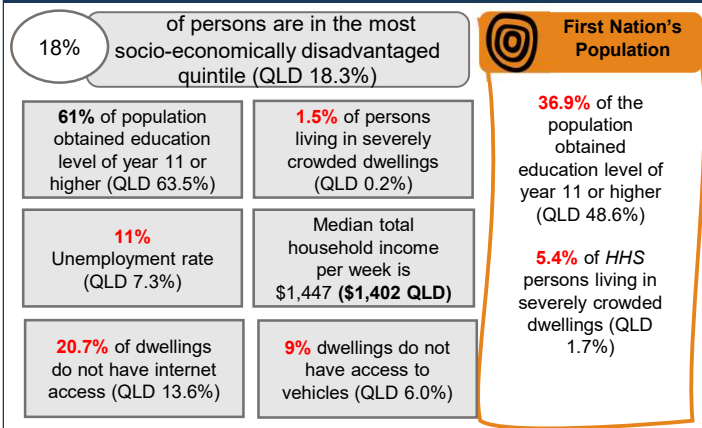
#### HHS Demographics



#### Geography

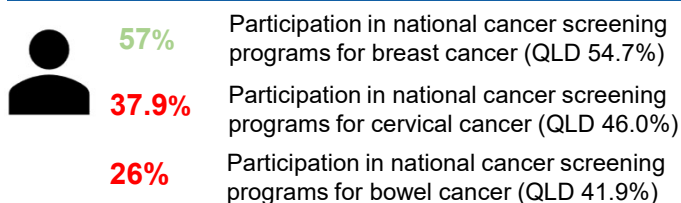


#### Social determinants

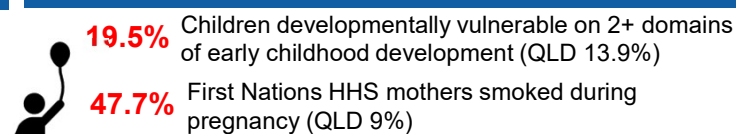


#### Health behaviours and risk factors

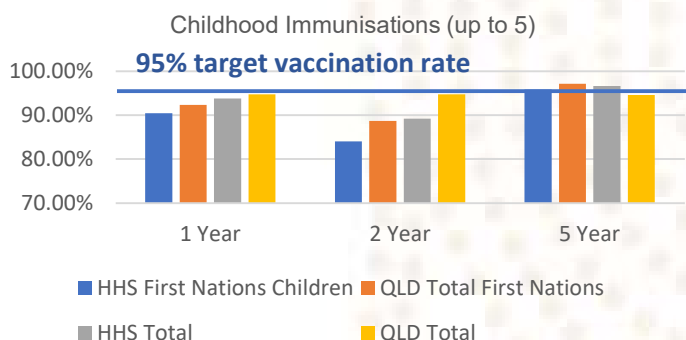
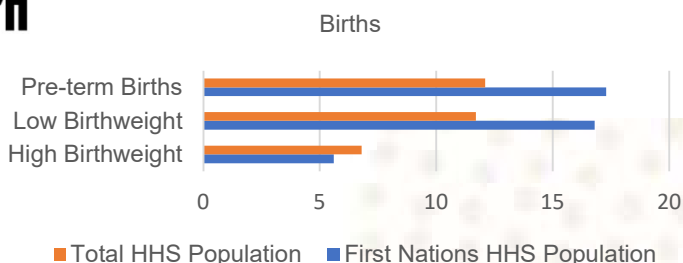
##### Adults



##### Children



Risk factors- estimated prevalence	HHS	QLD
Obese	37.9%	25.0%
Overweight	33.1%	34.9%
Insufficient physical activity	23.7%	30.3%
Smoking	19%	10.8%
Risky alcohol intake	22.8%	18.2%
High blood pressure	23.9%	16.8%
Psychological distress	16.4%	9.4%



## Health status

Chronic conditions	HHS	QLD total
<b>Cardiovascular conditions</b>		
Prevalence (% population)	8.9%	4.7%
Premature mortality: circulatory disease Age Standardised Rate (ASR) per 100,000 population	104.2	44
<b>Respiratory conditions</b>		
Asthma: prevalence (% population)	11.9%	11.8%
Chronic obstructive pulmonary disease: prevalence (% population)	4.3%	3.5%
Respiratory diseases: premature mortality ASR per 100,000 population	38.1	16.6
<b>Diabetes mellitus</b>		
Prevalence (% population)	8.9%	4.7%
Premature mortality ASR per 100,000 population	33.4	7.2
<b>Cancer</b>		
Prevalence ASR per 100,000 population	546	590
Premature mortality ASR per 100,000 population	137.6	102.4
<b>Mental health</b>		
Mental Health prevalence ASR per 100,000 population	16.4	22.7
Mortality- suicide* Rate per 100,000 population(age25-34)	44.4	18*
<b>External causes</b>		
Premature mortality ASR per 100,000 population	58.2	33.4

\*Age Standardised Rate per 100,000 persons

### HHS Service profile


13 GP Clinics	110 HHS Hospital Beds	140 Aged Care Beds	395 NDIS Participants
<b>Practitioner workforce per 1,000 estimated population</b>			
	HHS	Queensland	
Medical Practitioners	4.75	4.13	
Dental Practitioners	0.72	0.87	
Psychologists	1.23	1.02	
Pharmacists	0.94	1.02	
Registered Nurses and Midwives	19.16	14.15	
Other Allied Health	5.07	4.14	
Aboriginal & Torres Strait Islander practitioners (HHS)	0.14	0.02	

First Nation's Population	HHS	QLD total
<b>Chronic conditions**</b>		
<b>ARF / Rheumatic Heart Disease</b>		
Prevalence (% population)	3.5%	unavailable
<b>End stage kidney disease</b>		
Prevalence (% population)	0.21%	0.23%
<b>STIs</b>		
Prevalence (% population)	1.6%	unavailable
<b>Vaccine-preventable diseases</b>		
Prevalence Rate per 1,000 population	8.6	9.5
<b>Diabetes mellitus</b>		
Premature mortality ASR per 100,000 population	66.3	23.7
<b>Respiratory Disease</b>		
Premature mortality ASR per 100,000 population	28.9	24.9
<b>Cancer</b>		
Premature mortality ASR per 100,000 population	107.6	83.5
<b>Circulatory system disease</b>		
Premature mortality ASR per 100,000 population	123.6	62.6
<b>External causes</b>		
Premature mortality ASR per 100,000 population	87.9	53.5

### Use of Health Services HHS (2020-21)

<b>Proportion of residents who did not visit their GP (2018-19)</b>			
20.3%	HHS	11.6%	QLD
<b>Number of allied health services per 100 people (2018-19)</b>			
46	HHS	100.0	QLD
<b>GP type presentations to ED</b>			
46%	HHS	NA	QLD
<b>Proportion of GP telehealth services (2018-19)</b>			
0.56%	HHS	0.19%	QLD
<b>Eligible adult population accessing dental care (2019-20)</b>			
25.9%	HHS	12.8%	QLD

### HHS population hospital utilisation

22,143 Hospital admissions	54,079 ED visits	<b>First Nation's Population NWHHS</b>	
<b>Top Admissions</b>		<b>12,950 Hospital admissions</b>	
1. Renal Dialysis	373	Top Admissions	209
2. Orthopaedics	Mental health admissions (rank 18)	1. Renal Dialysis	Mental health admissions (rank 13)
3. Non-specialist Surgery		2. Respiratory Med	
Potentially preventable hospital admissions per 100 residents		3. Cardiology	
9.6 HHS	7.7 QLD	Potentially preventable hospital admissions per 100 residents	
		10 HHS	7.7 QLD

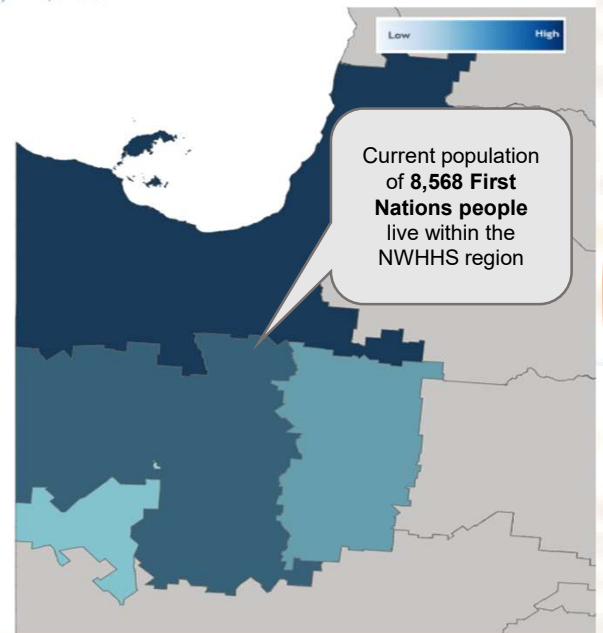
# North West Hospital Health Service

## First Nation's Population | Area Profile | HHS Indigenous Area

The NWHHS is home to many First Nations peoples and communities: Burketown (40.4% First Nations people), Doomadgee (93.7% First Nations People), Camooweal (42.5% First Nations people), Mount Isa (16.6%), Urandangi (85%), Dajarra (36.5% First Nations people), Mornington Island (88% First Nations people), Karumba (6.9% First Nations people), Normanton (59.6% First Nations people), Cloncurry (22.8% First Nations people), McKinlay (4% First Nations people) and Julia Creek. First Nations people had a higher rate of 5 year old vaccinations compared to the total QLD population. First Nations people have higher rates of severe overcrowding, smoking during pregnancy, low birth weight, pre-term births, potentially preventable hospitalisations and premature mortality. Rheumatic heart disease is still prevalent in communities, and chronic diseases are all significantly higher than the QLD total.

### Geography

Area (sq km) by HHS, SA2 2016

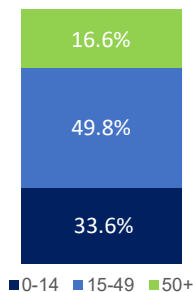


### HHS Demographics

#### HHS

31.1% of the population identified as being First Nations  
36.9% of births were First Nations

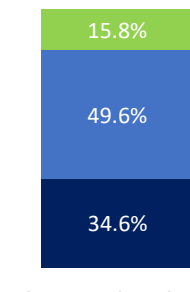
First Nation's Population



#### Queensland

4.6% of the population identified as being First Nations  
7.2% of births were First Nations

First Nation's Population



### Use of Health Services HHS

#### 12,950 Hospital Admissions

##### Top Admissions HHS

1. Renal Dialysis
2. Respiratory Medicine
3. Cardiology

Potentially preventable hospital admissions per 100 First Nation's residents (2019-20)

##### Top Admissions QLD

1. Renal dialysis
2. Obstetrics
3. Respiratory Medicine

10 HHS 7.7 QLD

### Service profile

A&TSI practitioners per 1,000 First estimated population  
0.41 HHS 0.22 QLD

2 ACCHO's in HHS

ACCHO's per 100,000 First Nation's population  
23 HHS 11.4 QLD

### HHS Social determinants

Obtained education level of year 11 or higher

36.9% HHS 48.6% QLD

Persons living in severely crowded dwellings

5.4% HHS 1.7% QLD

### Health behaviours and risk factors- children

#### First Nations mothers smoked during pregnancy

47.7%

HHS

9%

QLD

#### Fully vaccinated at age 5

95.8%

HHS

94.6%

QLD

#### Low birth weight

16.8%

HHS

7.3%

QLD

#### Pre-term births

17.3%

HHS

7.6%

QLD

### Health status

Chronic conditions	HHS	QLD total
<b>ARF / Rheumatic Heart Disease</b>		
Prevalence (% population)	3.5%	unavailable
<b>End stage kidney disease</b>		
Prevalence (% population)	0.21%	0.23%
<b>STIs</b>		
Prevalence (% population)	1.6%	unavailable
<b>Vaccine-preventable diseases</b>		
Prevalence Rate per 1,000 population	8.6	9.5
<b>Diabetes mellitus</b>		
Premature mortality ASR per 100,000 population	66.3	23.7
<b>Respiratory Disease</b>		
Premature mortality ASR per 100,000 population	28.9	24.9
<b>Cancer</b>		
Premature mortality ASR per 100,000 population	107.6	83.5
<b>Circulatory system disease</b>		
Premature mortality ASR per 100,000 Port Douglas-Daintree population	123.6	62.6
<b>External causes</b>		
Premature mortality ASR per 100,000 population	87.9	53.5

The majority of indicators represent a SA3 level view. SA2 level data may be required to consider what may be driving the observed health outcomes, social determinants, demographics. If available, this SA2 level data will be located in the HHS Quantitative Report

### **Statewide Benchmarking**

- Where available the data is benchmarked against Queensland data.
- In some instances Queensland data is not available on the planning portal.

For consistency all rates have been reported per 100,000 population.

**ASR definition:** Age-standardised rates are rates standardised to a specific standard age structure to facilitate comparison between populations and over time. In this report, they are directly age-standardised rates adjusted using the Australian standard population, that is, the Australian estimated resident population (ERP) as at 30 June 2001

### **Data sources & limitations**

- Data sourced from QLD Health and publicly available data via the Planning Portal
- Please consult the LANA Appendix for data definitions and limitations

### **Explanatory notes**

**NA:** Some indicators do not have data available at the SA3 level, due to suppression on the portal. For these indicators we have used **NA** or replaced with an indicator at the HHS level.

**\*\*** Data on chronic disease burden for First Nations population is available only for disease states listed. In some instances the state level Queensland data and premature mortality data is unavailable

**\*\*\***excludes hospital admissions for interventions