

Wait time categories

Wait time categories are based on how quickly you need to be seen. The category is decided by a specialist health professional.

Sometimes in cases of an emergency, booked surgery may have to be rescheduled.

CATEGORY **1**

URGENT

Recommended within **30 days** of being added to the wait list

CATEGORY **2**

SEMI-URGENT

Recommended within **90 days** of being added to the wait list

CATEGORY **3**

NON-URGENT

Recommended within **365 days** of being added to the wait list

What should I do if my health changes while waiting?

If your condition is getting worse while you wait, **go back to your GP** and discuss your concerns.

Are you ready for surgery?

Surgery can only be performed if you are fit and healthy. If you are uncertain whether you will be fit enough for surgery, please seek advice from your GP or doctor.

To ensure that all patients on the waiting list receive their surgery as soon as possible, it is important that you contact us if your circumstances change and you:

- no longer need surgery
- have had surgery elsewhere
- are not available at the scheduled date/time
- do not have anyone to care for you after surgery.

It is also important that you notify us if there are any changes to your contact details.

The Townsville Hospital
PO Box 670, Townsville QLD 4810
Ph: 07 4433 1111

Published by Townsville Hospital and Health Service
www.health.qld.gov.au/townsville



This patient information brochure supports National Safety and Quality Health Service Standard 2 - Partnering with Consumers



© The State of Queensland (Townsville Hospital and Health Service) 2019,
creativecommons.org/licenses/by/3.0/au



Townsville
Hospital
and Health
Service



Understanding outpatient and surgical wait times at The Townsville Hospital



Outpatients to surgery - your journey

You see your GP



Your GP tells you that you need to see a specialist doctor. Your doctor sends a referral to The Townsville Hospital for you to have an appointment with a specialist doctor at an outpatient clinic.

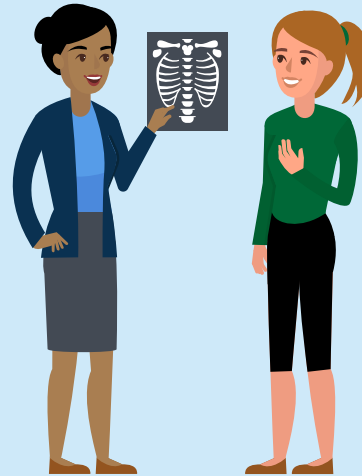
Wait

1

Your referral to the outpatient clinic is given a category (1-3) which indicates how quickly you need to be seen.

Refer to **Wait Time Categories** for more information.

You see your specialist doctor



Your specialist doctor will decide if you need surgery.

If surgery is not needed you may be recommended for allied health (eg. physiotherapy) or returned to the care of your GP.

If you need surgery your specialist surgeon will assign a category which determines your waiting time.

Wait

2

Your category (1-3) determines your waiting time for surgery.

Refer to **Wait Time Categories** for more information.

You have your surgery



After your surgery you are discharged from the hospital with a discharge plan.