

BAR CRUSHER[®]

High-performance plate aluminium boats

**BUILT IN
AUSTRALIA**



HIGH-PERFORMANCE PLATE ALUMINIUM FISHING BOATS

**FISHING
WEAPONS[®]**



**FISHING
WEAPONS®**

PROUDLY BUILT IN AUSTRALIA FOR AUSTRALIAN ANGLERS...



**A PREMIUM AUSTRALIAN BOAT BUILDER
DELIVERING HIGH-PERFORMANCE FISHING BOATS
FOR hardcore AUSTRALIAN ANGLERS...**





 **JOIN THE CONVERSATION**
www.facebook.com/BarCrusherBoatsOFFICIAL

 **SHARE YOUR ADVENTURES**
#barcrusher
www.instagram.com/barcruiserboats



BAR CRUSHER®

High-performance plate aluminium boats

A COMPANY BUILT ON INNOVATION, QUALITY AND PERFORMANCE...

Thanks for picking up this boat buyer's guide to research your next boat... it's the first step towards owning a genuine Fishing Weapon®.

When you start the process of looking for a new boat, you'll quickly realise there are so many brands and models on the market.

Most marine dealerships are full of flashy boats and salespeople making big promises. A few of these boats are exceptionally well built and perform beautifully, while others are designed and built to a lesser standard and perform very poorly.

There's nothing more disappointing than investing in a new boat and later discovering your 'pride and joy' is hard riding, broaches when running down the front of a wave (very dangerous), or simply isn't suitable for its intended use.

We assume you've been drawn to Bar Crusher because you like the Bar Crusher concept, or you may have heard of our boats' unequalled reputation.

We hope this boat buyer's guide will assist you in developing a better understanding of boat design, build quality and overall performance – important factors to consider as part of your pre-purchase research so you can make an informed decision.

Ultimately, it's our aim to ensure you choose the best boat that's going to give you, your family and your friends many memorable experiences on the water.

FACT: *All aluminium boats perform well in the showroom... very few perform well in 20 knots of breeze and a metre of wind chop.*

FISHING WEAPONS®
WAVECRUSHER
SERIES

GEN²
HULL DESIGN

Rigideck®

Waveslicer®

Quickflow®

Bar Flap™

Bar Catch™

Game Lock™

Rigideck, Waveslicer, Quickflow, Bar Flap, Bar Catch, Game Lock, Wavecrusher, Gen2™, Delta Flare, Fishing Weapons, Weapons For Sale, For The Ride Of Your Life are all Trademarks owned and used by Rockbank (Aust) Pty Ltd Copyright © 2017

**BUILT IN
AUSTRALIA**



EVERY INDUSTRY HAS A LEADER...

CHECKLIST WHEN RESEARCHING A NEW BOAT

- It must be engineered to be extremely strong and durable

- It must slice through wind chop without pounding

- It must be stable at rest

- It must safely handle a following sea when running down a wave

- It must be designed and built to minimise maintenance

- It must be comfortable and functional to fish from

- It must be easy to launch and retrieve

- It must be easy to store

- It should come loaded with features as standard

- It must give you confidence on the water

- It must have at least a five-year hull warranty

- It must have exceptional aftersales service

Please feel free to contact us to assist with your research...



BOAT BUYER'S GUIDE



BAR CRUSHER[®]
High-performance plate aluminium boats

FISHING WEAPONS.



ASK THE RIGHT QUESTIONS

There are no short cuts in building quality plate aluminium boats. As a buyer, you need to know some very important facts about good boat design and construction to be able to ask the right questions and ensure you buy the best performing boat for your money.

Have you ever looked at something closely in a shop or dealership and walked away feeling it was well designed and beautifully made? Have you ever asked yourself what gave you that feeling?

PREMIUM QUALITY VS MASS PRODUCED

The sense of premium quality is a combination of things. It's about clever, innovative design. Neat workmanship. Careful fit. Thoughtful layout. Knowing the manufacturer has an interest in you and how you will use the product.

Sometimes it's the little things like the sound made when you close the door of a BMW or Mercedes Benz car. Positive. Firm. Superb engineering. Well thought-out.

Think of the contrast here with the way a door shuts on the cheapest car on the market. Tinnie, noisy, lightweight, poor fit. It sounds cheap. It has been designed in the hope you won't look too closely and probably won't care.

SAME PRINCIPLE

The same principle applies with trailer boats. There are very high-quality boats on the market and there are very poor-quality boats – and everything in between.

Beware of big claims in glossy brochures – and appreciate a high price tag is no indicator of good quality and performance. Some boats are built to an ordinary standard, are hard riding and are prone to serious broaching.

Some boats get everything right.

TIP: *Before you buy a boat, take it out on the water in 20 knots of wind and a metre or more of wind chop, and put it to the test!*



BAR CRUSHER
FOR THE RIDE OF YOUR LIFE

KNOW WHAT YOU'RE BUYING

It's important to know exactly what you're buying, so having an understanding of plate aluminium boat construction will allow you to make an informed purchasing decision.

Beware... there are some manufacturers who enjoy the confusion surrounding the definition of a 'plate boat'!

Technically, aluminium plate is 6mm aluminium alloy plate and thicker. However, few trailer boats are built from 6mm aluminium these days as it's very heavy, quite expensive, and doesn't provide any great advantage in terms of strength over 4mm and 5mm material.

Most people perceive a plate boat to be a heavily-built aluminium boat, and therefore more durable. There are plenty of opportunists who try to pass-off lightly-built aluminium boats as plate boats, so the next few pages will discuss what to look for – and what to avoid...

DEFINITION: *A 'plate boat' is a boat that's built using a properly constructed sub-floor frame; heavy-gauge, high-tensile aluminium cut from flat plate; and has a welded-in aluminium floor...*



LOOK FOR MAXIMUM STRENGTH

If a boat is to be used in a metre or more of wind chop on bays or in swell offshore, it will be subjected to tremendous forces that will stress the hull. To withstand these stresses, the hull needs to be properly designed, well braced and stiffened to minimise flex.

Excessive flex causes fatigue cracking, which means the boat will start to crack around the welds, split and, ultimately, fail. Well-built boats can withstand these forces, while lightly-built boats can fail.

Think about what happens when you bend an empty aluminium can to and fro. Yes, that's right... it cracks, splits and tears! This is exactly what can happen to a lightly-built aluminium boat if stressed by running through waves on windy days.

FACT: *Bar Crusher boats are designed and engineered for strength, performance and durability...*

TWO TECHNIQUES

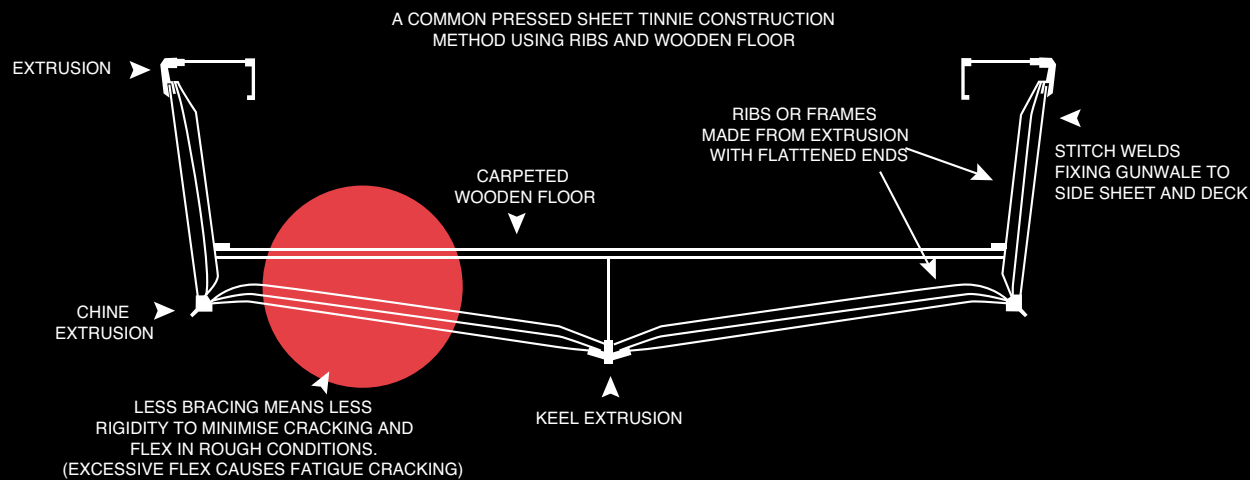
There are essentially two types of aluminium boat-building techniques used in Australia.

PRESSED SHEET 'TINNIE' CONSTRUCTION

Fine for smaller boats that will be used in rivers, lakes and estuaries and on calm days. (Construction method commonly used among most mass-production boat manufacturers.)

'PLATE' CONSTRUCTION

Great for bigger boats over 5m in length that will be used for bay, coastal and offshore boating. (Construction method primarily used by specialist boat builders.)



THE TYPICAL TINNIE

Around 70 years ago people started experimenting with very thin-gauge aluminium to build small roof-topper dinghies. These first 'tinnies' were often riveted together and were a great improvement over alternative construction materials of the day.

Today, some manufacturers that use the tinnie construction method also attempt to build larger boats. These boats, however, don't have the strength and durability of a plate aluminium boat.

The tinnie method involves using an aluminium alloy with a softer temper that allows the material to be easily pressed into shape. (Often cut from coils of aluminium rather than from flat plate.) This softer material is typically pressed in a

brake press to give the sides of many tinnies that distinctive 'clinker' look.

The next step involves inserting the bottom, side and deck material into slotted extrusions around the gunwale, chine and keel. The whole structure is then stitch-welded together or welded along the extrusions. A number of ribs are then welded between the extrusions (down the sides and under the floor), in an attempt to give the structure some strength.

This design often relies on plywood flooring to brace the hull. Typically, a piece of marine ply, covered with carpet, is fitted as a floor and held in position with a few tabs on the ribs or a few self-tapping screws. Often, plastic mouldings are then used to fit out the dashboard, side pockets and cabin areas. This method is commonly used by mass-production boat manufacturers.

The tinnie construction method is fine for smaller boats, which are to be used in calm conditions, but it simply can't provide the strength, performance and durability of Bar Crusher's plate aluminium hull.

BEWARE: Some mass-production manufacturers build a 'hybrid' construction to look like a plate boat. Typically, these boats have tinnie-style sub-floor framing and flat, non-pressed sides. These pretenders will never have the strength and durability of a true plate boat...



THE PLATE BOAT

With the popularity of plate aluminium boats in Australia, there's an increasing number of manufacturers building them – to varying levels of quality.

Generally, a plate aluminium boat should be built using a proper sub-floor structure, as opposed to just a few ribs. True plate boats draw great strength from a sub-floor frame that supports, braces and stiffens the hull. Good plate boats also have fully-welded and sealed aluminium floors for further bracing.

Real plate boats don't have ribs around the inside of the hull, as they use the strength of the sub-floor and the hull structure itself to support the sides of the boat. If you can see ribs or extrusion frames running down the sides under the side decks, it's a dead giveaway the boat is built using the tinnie construction method, rather than true plate aluminium boat construction.

Plate boat builders usually use a much stiffer, harder, higher temper material cut from thick plates of high-tensile aluminium, rather than low-tensile, soft, coiled material as used in tinnies. (The lower temper coiled material, although easier to form, press and bend, can fatigue and crack much more easily than high-tensile material.)

FACT: *There are significant differences in the way mass-production manufacturers build plate boats, and the way Bar Crusher builds plate boats...*





TYPICAL SUB-FLOOR SYSTEMS USED TO BUILD PLATE ALUMINIUM BOATS...

A. THE WAY MOST OTHER MANUFACTURERS BUILD PLATE BOATS

(Cross-frames and flat bar)

B. THE WAY BAR CRUSHER BUILDS PLATE BOATS

(Full-depth, full-length longitudinal frames, fully-braced in all directions, boxed and triangulated)

THE WAY MOST OTHER MANUFACTURERS BUILD PLATE BOATS

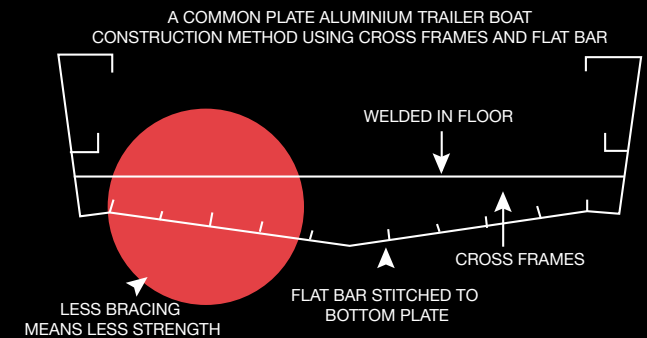
Many plate boats use cross-frames and flat bar to strengthen the hull structure. This technique involves the placement of a number of frames running across the hull set at varying distances. Between the cross-frames, flat bar (typically 50mm x 6mm) is often stitch-welded to the bottom plate.

This system is commonly used by other manufacturers in the construction of plate aluminium boats. If the cross-frames are situated too far apart, the bottom plate of the boat can deflect and deform.

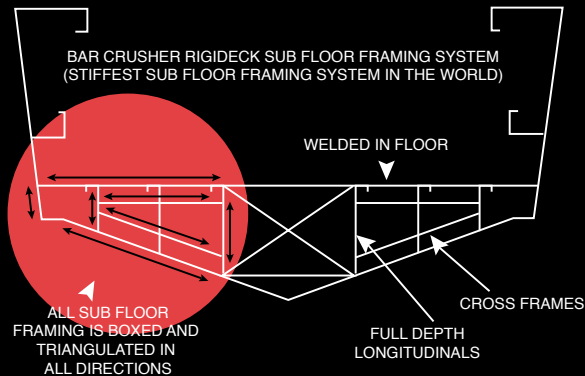
The flat bar provides some strength, but it needs to be braced properly to minimise deflection and flex.



A. Typical plate boat construction (Not the Bar Crusher way)



B. Plate boat construction using Rigideck®



Rigideck® THE WAY BAR CRUSHER BUILDS PLATE BOATS

Bar Crusher's Rigideck® system is the toughest hull building system in the world. Rigideck® uses full-depth and full-length longitudinal frames so everything is boxed and triangulated. For even greater strength, cross frames are used between the longitudinal stringers so everything is boxed and triangulated.

If you think of an aeroplane wing or aerospace honeycomb structure you can visualise the Rigideck® system. All the sub-floor framing is braced in all directions to cope with tremendous stresses, with the aim of eliminating flex.

The reason every boat builder doesn't use this system is because it's more expensive, harder to do and requires exceptional welding skills.

What does all this mean?

Regardless of whether you're an extreme adventurer going 100km offshore or a fair-weather skipper who uses your boat on a perfect day once a year, sooner or later you'll be coming home on a windy day with a metre or two of wind chop on the water.

When you do, you can be confident the Rigideck® system, inherent in every Bar Crusher boat, is engineered to handle it better than almost any other boat out there.

FACT: *Bar Crusher boats, similar to aircraft, are engineered to withstand extreme forces...*

Waveslicer® NOTHING EATS CHOP LIKE A BAR CRUSHER...

Bar Crusher's Waveslicer® concept combines clever features that are different from any other boat hull on the market.

Waveslicer® incorporates a deeper deadrise than most other aluminium boats. Typically this is between 18° to 20° at the transom and even sharper at the bow. This sharp bow or 'entry' slices the waves more effectively than boats with a stubby nose. Looking at a Bar Crusher, you'll easily identify the sharp nose or entry that 'slices' through waves.

In addition, the Waveslicer® hull utilises a strake-less design. Strakes are the small ridges, running longitudinally from bow to stern, that are often present on the underside of trailer boat hulls.

Traditionally, strakes have been used to try to give a boat extra lift when trying to get out of the hole onto the plane, and also to provide stability at high speeds. The down-side of strakes in aluminium boats is they can cause pounding when hitting waves. Strakes can also create turbulence over the prop when turning. This turbulence can cause the prop to aerate and the engine to over rev.

Bar Crusher's Waveslicer® hull incorporates a smooth, deep-V hull that slices beautifully through waves – without pounding. The smooth Waveslicer® hull allows the boat to hold in the water during tight turns without the aeration or cavitation experienced in other hulls. You'll also experience less turbulence and air bubbles under the transducer which means your sounder (fish finder) will be clearer and easier to read.



Quickflow® SUPERIOR STABILITY AT REST

Boat design is about trying to incorporate all the very best design features to ensure the hull gives great performance for its intended application.

In the past, boat designers have had to compromise by building flatter hulls to achieve the required stability at rest. As we all know, a flatter hull shape means a hard, pounding ride. (You may have ridden in another aluminium boat on a windy day and found the ride to be almost unbearable.)

Bar Crusher's Waveslicer® design uses a deep-V hull for a superior ride and an innovative water ballast system for stability at rest.

Enter Quickflow® water ballast technology...

Running along the full length of the keel, there's a cavity in the bottom of the hull, open at the transom. When the boat stops, this fills, becomes ballast, lowers the chines into the water and provides tremendous stability.

The moment the boat moves forward, the water ballast is jettisoned from the hull allowing the boat to fly up onto the plane.

Bar Crusher has worked hard to perfect the water ballast system to ensure there is no lag when accelerating, just a smooth and fast transition onto the plane.





GEN2 NEXT EVOLUTION IN PLATE ALUMINIUM BOAT DESIGN

Leading the industry in innovation, Bar Crusher's research and development department is tireless in its efforts to set new standards in plate aluminium boat design, construction and performance.

Enter Bar Crusher's Gen2™ hull design... the ground-breaking result of over 18 months of research, development and testing.

Constructed inline with Bar Crusher's industry-leading engineering principles, the Gen2™ hull combines key features including a wider negative chine running forward, optimised wider chine aft and the distinctive Delta Flare™ – delivering greater hydrodynamic lift for more efficient planing and improved fuel economy, a higher bow attitude

and better spray deflection for a drier ride, as well as increased stability at rest.

The Delta Flare™ is a complex V-shaped planing plank that starts wider at the transom and narrows as it runs forward. It's more complex than a simple plank design and is specially shaped to provide lift and directional stability. While planing planks have been used in heavy composite boat designs over the years, they're rarely seen in aluminium boats... until now!

Extensive testing by Bar Crusher's team has proved the 490, 535, 575, 585 and 615 hulls receive significant performance benefit from the next-generation hull design, with the larger 670, 730 and 780 models continuing to be built on Bar Crusher's high-performance deep-V hull.

Experienced boaters all over the country have provided extremely positive feedback on the Gen2™ hull performance, confirming Bar Crusher has again hit the mark in building boats that deliver the highest level of performance and function.

Get onboard and experience the soft, non-pounding ride and incredible stability at rest that only a Bar Crusher boat can deliver!

FACT: *The evolutionary Gen2™ hull design cements Bar Crusher's position as a leader and innovator in plate aluminium boat design and construction...*

Bar Flap™ LOCK IT IN

An optional feature, Bar Flap™ is used in conjunction with the Quickflow® water ballast system.

Designed with an electric actuator for positive closure, the Bar Flap™ system is operated from the helm and creates a superior system to close-off the water ballast inlet.

Bar Flap™ can be used in two ways:

1. To keep water out to make the boat lighter when launching. The boat will float higher and have less draft. (ie. The boat can travel through shallower water.)
2. To trap water in to make the boat heavier. In some situations extra weight (or ballast) in the hull can provide a better ride.

Although not essential, the Bar Flap™ feature may be useful for those who have a shallow draft application or run very lightly loaded.



'FOLLOWING SEA' PERFORMANCE IS CRITICAL

Following sea performance is something salespeople don't often speak about... but they should.

When running with the sea or down the face of a wave you need to know your boat will drive predictably and steer where you point it. Whether it's in 1.5m of wind chop on a bay or a 5m swell offshore, your boat must perform well in a following sea.

The only way to prove a boat in a following sea is to take one out on the water. If you're looking at a brand of boat and the salesperson isn't keen to prove the following sea performance in a nasty sea, keep looking!

(The boat may perform badly or, even worse, the salesperson may not be confident in the boat's safety.)

When running down the face of a wave in a Bar Crusher, you're unlikely to experience the awful broaching action that skews a boat side on and tries to throw everyone overboard.

FUNCTION AND COMFORT

We've all heard of ergonomics in a work environment:

"The applied science of equipment design is intended to maximise productivity by reducing operator fatigue and discomfort."

Ergonomics also plays a role in boat design. Spending a day in a boat is great fun, but sometimes you can come home with a few aches as a result of the ride, seating position or fishing posture.

There are two main reasons why you may be uncomfortable in a boat: poor ride; bad ergonomics.

STAND UP AND SIT DOWN

As part of your pre-purchase research, when standing in the boat, walk over to the side and see if the coaming hits you in the thigh just at the right height – 100mm to 200mm above your knee, but not too high. Your toes should locate under the side deck and coaming so you can stand with your back straight. This is the ideal fishing position. No stress on your



lower back, but you're nicely wedged against the side of the boat and ready for anything.

Do this 'standing against the coaming' test in any boat you're considering buying. Is it comfortable? Do you feel secure? Is your back straight? Can you comfortably lean over and net or gaff a fish?

If you want to get a feel for the ideal ergonomics and fishing posture, stand in the cockpit of a Bar Crusher boat and you'll immediately understand.

The seating position in a Bar Crusher is also carefully designed. A seating position should provide good visibility of the water and allow you to grab a rod quickly when a fish strikes.

Likewise, the large hatch in Bar Crusher's cuddy cabin and hard top models allows easy access up forward without getting your shoulders stuck. The cabin offers good head room and the handrails around the boat are placed to give people a comfortable and secure grip when they need it most.

The rear bench seat folds away neatly so the back coaming is unobstructed and the step-through in the transom is a perfect height to allow easy access from the stern.

The baitboard is the ideal height for bait preparation and rigging, while the many rod holders around the boat are positioned to allow quick and comfortable access.

Something every boat should have is clean, wide side decks. People need to be able to sit around the side decks

WHAT IS BROACHING?

This is the phenomenon that sees the nose of the boat bury in the trough of a wave and the stern of the boat is suddenly pushed violently sideways and parallel to the wave – without any warning.

If you've ever experienced this in a boat, you'll know what we're talking about. If you never want to experience a nasty broach, rest assured every Bar Crusher hull has been designed with the aim of eliminating broaching.

Beware of boats that are wider or 'beamy' at the transom, run a shallow-V and have a sharp nose. This is a formula for

when fishing. This is not only practical and comfortable, it increases the size of the cockpit as the crew can spread out around the boat rather than all huddling in the centre under each other's feet.

Again, smart design means comfortable and relaxing days on the water.

FACT: *Bar Crusher boats are among the best performing boats on the water. If anyone suggests otherwise, invite them to test run any other aluminium trailer boat alongside a Bar Crusher on a rough day!*

a broaching hull and the boat should be driven down a wave with great care. (ie. Be careful on a bay on a windy day and be especially careful offshore!)

A boat needs to be of balanced design. It needs to have the right deadrise or V in the right place, the right amount of planing area in the right place, and the right weight distribution throughout the vessel.

If these variables aren't very carefully managed in the design phase, the end result is a boat with very bad manners and habits. (In other words, a downright dangerous boat that really shouldn't be on the water.)





CONFIDENCE ON THE WATER

'You've ventured out fishing on a beautiful day and the water is like glass. Late in the day and half-an-hour from home the weather turns. With a 20-30 knot summer blow and 2m+ of nasty chop (on top of the swell) coming straight at you, do you have confidence in your boat to get all onboard home safely?'

As avid boaters ourselves, we've been caught in these conditions and it can be pretty worrying. Fortunately, the design work and testing that's been carried out on every model in our range ensures every Bar Crusher is predictable to drive, which instills real confidence.

Heading straight into chop and swell (or with it side on, or behind you) you'll find a Bar Crusher holds its course and rides nicely without the usual pounding experienced in many other aluminium boats.

In a Bar Crusher, you can say goodbye to that hard, pounding ride. Best of all, we'll prove it!

FACT: *Hull design is a science and all Bar Crusher hulls are fine tuned with just the right amount of V, planing area and weight distribution...*

BOAT MAINTENANCE – A MINIMALIST APPROACH

As passionate anglers, we have a simple outlook in regard to boat maintenance. People want to spend as little time as possible maintaining their boats and as much time as possible on the water.

To achieve this, everything must be designed and built to minimise maintenance.

The super-strong Rigiddeck® checkerplate deck system in a Bar Crusher is very easy to maintain, dries quickly and there are no annoying little gaps around the edges. The checkerplate deck is completely sealed so nothing can get under the floor – no terminal tackle, no stinking bait, no rusty tools, no old bits of fishing line.

The deck itself is clear of obstructions and quick to hose out. No smells and no wet carpet.

To soften the floor under foot, Bar Crusher offers a matting product called FishMat™. This non-slip matting is spongy under foot and requires no maintenance whatsoever. Simple, but smart.

BOAT STORAGE

This clever, folding gas-strut roof design takes 60 seconds to take down and about the same time to erect.

No special tools are required. Simple, quick-release fittings make it a snap. If you can slide your boat away under a low carport or garage it makes secure storage so much easier.

Quick, innovative, smart!

FACT: *Bar Crusher boats are designed so that after a long day on the water you can hose the boat out in minutes. On a hot day, the whole boat will be clean and dry within hours. Everything on the boat is easy to access, easy to clean and built to provide a good service life...*



THE BAR CRUSHER QUALITY DIFFERENCE...

People sometimes forget the saltwater marine environment can be pretty tough on equipment. Accordingly, boats need to be designed and built to last.

An example of this is the wiring in a boat. Many mass-production manufacturers often use the cheapest switches, connectors, fuse boards and wire available.

Why? Because most boat buyers wouldn't know the difference – and they won't find out until a few years later when things go wrong and their warranty has probably expired!

Bar Crusher uses tinned wire, quality switches (from the USA rather than China), quality fuse boards and glue-filled heat-shrink to cover connections to lock out the salt air. We do this to minimise potential problems with your wiring in a few years' time.

LOOK DEEPER

When you're considering buying any boat, look behind the dashboard to see how neat it is. Are the connections properly wrapped and sealed with glue-filled heat-shrink? Does the wiring look a bit messy and not very well done?

If you have a mate who's an electrician or a friend who really knows quality boats, bring them along to inspect a Bar Crusher. We're happy to let the toughest critic look over our boats.

There are many things we do at Bar Crusher to ensure a long life and maintenance is minimal. You'll notice stainless steel fittings are always insulated from the boat with plastic washers or insulative grease products. We insist on using #316 stainless steel rather than the cheaper #304 that's commonly used on other boats. Many of our hinges are high-tech fibre reinforced composite to provide a lifetime of service.

FUELLING UP

Another innovation is our fuel tank system, which is very different from that of other manufacturers. Our unique design ensures there are no fuel-filler hoses or pick-up hoses under the floor.

This means no sub-floor hoses and hose clamps that can leak fuel into the hull; inadvertently turning a boat into a bomb.

Refuelling is simple. Fill through the floor-mounted filler straight into the tank. The great advantage here is you can see how much fuel you have and siphon your tank directly if you pick-up some bad fuel. You can also top up at sea in an emergency, which is impossible with many side mounted fillers.

The list goes on, but the message is always the same.

Bar Crusher's R&D and design teams work hard to give you a premium boat and a better boating experience.



STANDARD FEATURES

Bar Crusher offers many features as standard that other companies charge as extras...

Bar Crusher dealers will provide you with a quote on a fully-featured Bar Crusher – which has all the fishing features you could want!

For example, all Bar Crusher boats come as standard with a Bar Catch™ (for single-handed launch and retrieve), berley bucket and muncher. It's the same story with toughened safety glass windscreens, dive/swim ladders, easy-entry transom door and more.

We predict you're going to want these things so we put them in.

Also standard on most models is a livebait tank, in-floor fish well, dual battery wiring system... the list goes on!

Some manufacturers love to charge extra for these things, but we believe it's important to give some of these items to you with the standard package.

We hope you agree!

FACT: Bar Crusher listens to Australian anglers and builds boats specifically for Australian conditions...

BOAT WARRANTIES

It amazes us that some boat manufacturers don't have enough faith in their product to offer a decent warranty. Some manufacturers offer as little as two or three years. The question to ask is: why so short?

What happens after this period? Sometimes you have to read between the lines and use your instincts.

Bar Crusher offers a structural warranty on every hull for a full five years.

That's confidence!





CUSTOM-DESIGNED TRAILERS...

The trailer is one of the most important – yet regularly overlooked – aspects of any trailer boat.

Anyone who has sat at a boat ramp for an hour or two will have seen people struggling to get boats on trailers. Some boat trailers don't work well because the set-up isn't right for the boat. A trailer must have guides and skids in the right place to make sure the boat self-levels and self-aligns. If the skids and guides are in the right place, the boat will be a breeze to drive on and off.

Every Bar Crusher trailer is custom made to fit the Bar Crusher hull. It has a full ladder of keel rollers up the centre for support, wobble rollers at the bow and stern as well as V guides to ensure the boat self-levels and self-aligns. Add to this quality galvanising, quality alloy wheels, quality suspension and a rigid frame design, and the result is a perfectly-matched package that makes towing, launching and retrieving a breeze.

In addition to the standard galvanised trailers, Bar Crusher also offers a series of premium-quality alloy trailers, which shed up to 150kg off the tow weight of the larger models. With heavy duty beam rails, the alloy trailers feature torsion bar axles, stainless steel callipers, vented rotors and a full keel roller system, similar to that on the galvanised version.

FACT: Every Bar Crusher trailer is custom made to fit the specific Bar Crusher hull...

Bar Catch™ SINGLE-HANDED LAUNCH/RETRIEVE

Every Bar Crusher trailer also leaves the factory with a Bar Catch™ system, which assists with single-handed launch and retrieve.

This stainless steel boat catch is mounted to the winch post to allow you to drive on and off the trailer with ease. It's perfect for those times when you're putting the boat in or out on your own.

Again, this feature is standard with every Bar Crusher!





THE ULTIMATE TEST...

After you've found the boat with all the features you need and confirmed with the dealer it fits your budget, the final step is the biggest test of all... the on-water test!

This is the time when a lot of salespeople start to come up with excuses: "It's too windy..." or "We don't have time..." or "We don't have one available to test..." are some of the most common excuses.

If the boat is as good as they say it is, they must be prepared to prove it to you on the water. If they want to take your money without being prepared to prove the boat to you, walk away. The boat is probably a dud and will not perform well.

PASS OR FAIL

The reality is that all boats perform well on a calm day. The big test is to run a boat in a bit of wind. Ideally, 15-20 knots of wind and a metre or more of wind chop. It's at a time like this when the boat will either pass or fail the test.

Ask the salesperson to run the boat with the waves. Then into the waves. Stop the boat and see how stable it is at rest. Stand at the side and get a feel what it's like to fish from. Sit on the side decks. Do a few tight turns with the motor trimmed in. Does the prop aerate and engine over rev in tight turns? Note how fast the boat gets onto the plane. Note if the boat feels predictable and comfortable through

the water. Does the engine seem well suited to the boat? Note how well the boat launches and retrieves.

Bar Crusher boats perform beautifully and if you go out in one you will love the performance!

If a salesperson in another dealership says Bar Crusher boats don't perform well, ask them to bring their aluminium boat down to run it against a Bar Crusher on a windy day. This way you'll get a true comparison and can make an informed choice.



WE'RE HERE TO ASSIST WITH YOUR RESEARCH

Thanks for reading this boat buyer's guide. We hope it has helped you on your journey to acquiring the ultimate plate aluminium boat.

Please continue through this publication to learn more about the models in Bar Crusher's comprehensive range and feel free to contact any of our dealers – anytime – should you need any advice or assistance.

We welcome your feedback and technical questions. If you want to have a chat or have any trouble getting information regarding the purchase of your new boat, please call Bar Crusher HQ and we'll provide all help possible to assist with your research.

BUYER'S CHECKLIST

Features	Benefits
■ Deep-V hull	Waveslicer® hull arguably gives the softest ride of any aluminium trailer boat in Australia.
■ Water ballast system	Quickflow® delivers superior stability at rest.
■ Super-strong sub-floor system	Rigdeck® is the strongest sub-floor hull construction system in the world.
■ Sealed, checkerplate floor	Easy to clean, no wet, smelly carpet and tackle hiding under the floor.
■ Custom-designed trailer to suit hull	For easy towing, launching and retrieving.
■ Folding gas-strut roof / windscreen	For low garage or carport storage.
■ Rocket launcher / overhead rod rack	Overhead fishing rod / net / gaff storage.
■ Pivoting T-top on walk-around models	Innovative T-top that folds into the boat for low storage.
■ Air buoyancy / foam buoyancy	Fully-sealed air buoyancy chambers in most models / foam in smaller models.
■ Step-through 'easy entry' transom	Easy access.
■ Marlin board / swim platform	Great for standing out the back.
■ Innovative baitboard	Removable / replaceable cutting board. Rod storage. Easy to clean.
■ Ski pole	Interchangeable with baitboard
■ Transducer / trim tab mounting plates	Don't have to screw through hull.
■ Folding rear seat	Neatly hides away batteries and disappears into the transom for maximum fishing room.
■ V-berth bunks	Comfortable area to lay down. Available with bunk in-fill to make full double berth.
■ Storage pockets everywhere	Plenty of storage fore, aft and sides.
■ Built-in livebait tank	Neatly hidden in the transom. Great access.
■ Dive / swim ladder	Great for climbing in and out on land or water.
■ Berley bucket and muncher	Almost every angler needs a berley bucket and muncher.
■ Navigation lights	Required by law for visibility at night.
■ Anchor light	To avoid others hitting you at night.
■ Illuminated switches	Allows you to locate switches at night in the dark.
■ Power outlet	12V DC power outlet on dash for spotlight or charging phones.
■ Bilge pump	Good-quality, high-capacity bilge pump to blast water out fast.
■ High-strength aluminium rod holders	No cheap plastic rod holders.
■ Battery isolation switching	To isolate batteries when boat is stored.
■ Dual battery system	Good idea when heading offshore.
■ Clear bowl fuel filter	You need to be able to separate and drain water from the fuel. Essential.
■ Fully-fabricated, heavy duty windscreen	No lightweight extrusion here. Toughened glass 'scratch-resistant' windscreens on C, HT and HTP models.
■ Built-in fish well	To store your catch, away from direct sunlight.
■ Bow sprit and anchor locator	Securely keeps the anchor in place.
■ Exclusive integrated fuel tank system	Reduces the risk of dangerous sub floor leaks (no other manufacturer in Australia uses this design).
■ Fast-draining anchor well	Empties fast if you take a wave over the bow.
■ Deck grip, non-slip deck pads	Maximises traction on side decks.
■ Floor matting	FishMat™ tube floor matting. Anti-fatigue. Non-slip.

* Check with your dealer which features are available in your chosen model



A BOAT FOR ALL ANGLERS

From the folding-roof cuddy cabin (C) series and functional centre console / side console / walk-around (XS / SC / WR) series, right through to the award-winning hard top (HT) and hard top pilothouse (HTP) series, all Bar Crusher boats are ready for serious fishing action – freshwater, estuary, inshore and offshore.

C Cuddy	WR Walk Around	XS Centre Console (rear)	SC Side Console	HT Hard Top	HTP Pilothouse Fully Enclosed
490C	490WR	535XS	535SC	585HT	730HTP
535C	575WR	575XS	575SC	615HT	780HTP
575C	615WR	615XS	615SC	670HT	
615C	670WR	670XS	670SC	730HT	
670C	730WR			780HT	

(Not all models are featured in this brochure. Please check the website for the full Bar Crusher range.)

490C



Build & quote
your Bar Crusher at
barcrusher.com.au

Bar Crusher's 490C offers incredible value for money...

Aimed squarely at entry-level boat buyers and those looking to step-up from pressed aluminium tinnies, the 490C is a tough all-round cuddy cabin boat that delivers great performance and is easy to tow, launch/retrieve and maintain.

Measuring 4.90m LOA, with a 2.00m beam, and constructed from heavy duty, high-tensile 4mm (bottom sides) and 3mm (top sides) marine grade plate aluminium, the 490C's ultra-smooth ride is the result of its high-tech Waveslicer® non-pounding, deep-V hull, while the expertly-engineered Rigideck® sub-floor system ensures maximum hull strength. The boat is extremely stable at rest, thanks to Bar Crusher's exclusive Quickflow® water ballast technology.

Built on Bar Crusher's evolutionary Gen2™ hull design, the 490C combines key features including an optimised wider chine aft and the distinctive Delta Flare™ – delivering greater hydrodynamic lift for efficient planing and excellent fuel economy, a higher bow attitude and better spray deflection for a drier ride.

The 490C's cuddy cabin creates a safe place to store gear out of the weather, leaving a decent cockpit fishing area, while the ample internal depth will ensure everyone feels secure when out on the water. The functional helm station allows for installation of the latest marine electronics, while the fully-welded checkerplate deck is extremely easy to clean after a solid day on the water.

Strong aluminium rod holders, heavy duty boarding ladder, berley bucket and muncher, LED lighting and other items are among the list of standard features, while owners can customise their boats from the 490C options list.

Incorporating a 60L underfloor fuel tank and rated to carry a 40-70hp outboard, the dry tow weight of the 490C is around 840kg, ensuring it is easily towable by smaller vehicles.

Every Bar Crusher boat is factory-packaged on a custom-designed trailer, which ensures towing, launching and retrieving is a breeze. Self-centering and aligning perfectly every time, Bar Crusher's innovative Bar Catch™ system also allows for single-handed launch and retrieve. It's the ultimate entry-level boating package!



535C



Build & quote
your Bar Crusher at
barcrusher.com.au

Bar Crusher's 535C is an ideal family boat...

Designed as an all-round fishing and family boat – and constructed from heavy duty, high-tensile 4mm (bottom sides) and 3mm (top sides) marine grade plate aluminium – the 535C is a superbly-engineered boat that's ideal for estuary, bay and inshore coastal boating.

Measuring 5.35m LOA with a 2.15m beam, the 535C incorporates all of Bar Crusher's exclusive features – high-tech Waveslicer® non-pounding, deep-V hull; super-strong Rigideck® sub-floor system with fully-welded checkerplate floor; and Quickflow® water ballast technology for superior stability at rest.

Built on Bar Crusher's evolutionary Gen2™ hull design, the 535C combines key features including a wider negative chine running forward, optimised wider chine aft and the distinctive Delta Flare™ – delivering greater hydrodynamic lift for efficient planing and excellent fuel economy, a higher bow attitude and better spray deflection for a drier ride.

Note the shape of the Delta Flare at the transom and the distinctive shape of the Quickflow® water ballast outlet. This innovation incorporates a cavity running the full length of the keel that quickly fills with water when the boat is stationary, which lowers the chines into the water for greater stability, and drains in seconds as the boat moves forward.

Easily managed by people starting out in boating, the 535C has wide side decks and a functional internal depth to ensure everyone feels secure when out on the water, while the cuddy cabin offers the kids some protection from the elements.

The 535C has plenty of rod storage in the side decks and baitboard, storage under the bunks and a comfortable helm position with good all-round vision, while the optional clip-on rear seating provides flexible seating configurations that can be removed altogether, as required.

Strong aluminium rod holders, livebait tank, swim ladder and berley bucket are among a long list of fishing-related features.

Rated to carry a 70-100hp outboard, combined with a 100L fuel capacity, the 535C is perfect for those seeking a versatile boat in a compact, easy-to-tow and easy-to-store package.



5750



Build & quote
your Bar Crusher at
barcrusher.com.au

Bar Crusher's 575C is compact, capable and huge on features...

Designed as a versatile bay and inshore fishing boat, the 575C is equally at home fishing for snapper at anchor or trolling the headland washes for kingfish.

Measuring 5.75m LOA, with a 2.15m beam, and constructed from heavy duty, high-tensile 4mm (bottom sides) and 3mm (top sides) marine grade plate aluminium, the 575C boasts all of Bar Crusher's exclusive features – high-tech Waveslicer® non-pounding, deep-V hull; super-strong Rigideck® sub-floor system with fully-welded checkerplate floor; and Quickflow® water ballast technology for superior stability at rest.

Built on Bar Crusher's evolutionary Gen2™ hull design, the 575C combines key features including a wider negative chine running forward, optimised wider chine aft and Delta Flare™ – delivering greater hydrodynamic lift for efficient planing and excellent fuel economy, a higher bow attitude and better spray deflection for a drier ride.

Note the shape of the Delta Flare at the transom and the distinctive shape of the Quickflow® water ballast outlet.

This innovation incorporates a cavity running the full length of the keel that quickly fills with water when the boat is stationary, which lowers the chines into the water for greater stability, and drains in seconds as the boat moves forward.

The 575C's spacious cuddy cabin configuration and fold-away rear bench seat creates a huge cockpit fishing area, while the ample internal depth and Game Lock™ coaming ensure a comfortable fish-fighting position. The helm station fits the latest marine electronics, while the fully-welded checkerplate deck is extremely easy to clean after a solid day on the water.

Strong aluminium rod holders, livebait tank, in-floor fish storage tank, berley bucket, storage pockets, rocket launcher, baitboard and optional deck wash and anchor winch are among a long list of fishing-related features. If everyone's had enough of fishing, the removable bait-prep table allows a sturdy ski pole to be substituted.

Rated to carry a 90-115hp outboard, combined with a 110L fuel capacity (long-range tank also available), the 575C has everything the bigger boats have, albeit in a compact, easy-to-tow and easy-to-store package.

The 575C's roof folds to create a 2150mm storage height.



615C



Build & quote
your Bar Crusher at
barcrusher.com.au

Bar Crusher's 615C is an evolutionary version of one of the most popular models in its award-winning range...

Designed for inshore and offshore fishing – and constructed from heavy duty, pre-stressed 4mm (bottom sides) and 4mm (top sides) marine grade plate aluminium – this versatile cuddy cabin model is widely acclaimed as the perfect all-round boat for Australian conditions.

Measuring 6.15m LOA, with a 2.25m beam, the 615C's ultra-smooth ride is the result of its high-tech Waveslicer® non-pounding, deep-V hull, while the expertly-engineered Rigidock® sub-floor system ensures maximum hull strength. The boat is extremely stable at rest, thanks to Bar Crusher's exclusive Quickflow® water ballast technology.

The evolutionary Gen2™ hull design combines key features including a wider negative chine running forward, optimised wider chine aft and the distinctive Delta Flare™ – delivering greater hydrodynamic lift for more efficient planing and

improved fuel economy, a higher bow attitude and better spray deflection for a drier ride, as well as increased stability at rest.

The 615C's spacious cuddy cabin configuration and fold-away rear bench seat creates a huge cockpit fishing area, while the ample internal depth and Game Lock™ coaming ensure a comfortable fish-fighting position. The helm station has ample space for large-screen marine electronics, while the fully-welded checkerplate deck is extremely easy to clean after a day on the water.

Strong aluminium rod holders, livebait tank, in-floor fish storage tank, berley bucket, large-volume storage pockets, rocket launcher, baitboard and optional deck wash and anchor winch are among a long list of fishing-related features.


Rated to carry a 115-150hp outboard, the 615C's superior performance capabilities and 140L fuel capacity (long-range tank also available) ensures this boat is equally capable miles offshore or at anchor with the family.

The 615C's roof folds down to create a convenient 2200mm overall storage height.



670C



 **Build & quote**
your Bar Crusher at
barcrusher.com.au

Bar Crusher's 670C is the ultimate all-round coastal and offshore sportfishing boat...

Whether charging the bar, fishing overnight or punching into a messy sea on your way back to the ramp, Bar Crusher's 670C will get you there – quickly, safely and in comfort.

Measuring 6.70m LOA, with a 2.35m beam, the 670C is constructed from heavy duty, high-tensile 5mm (bottom sides) and 4mm (top sides) marine grade plate aluminium. Its high-tech Waveslicer® non-pounding, deep-V hull delivers an ultra-smooth ride, the expertly-engineered Rigideck® sub-floor system ensures maximum hull strength and Bar Crusher's exclusive Quickflow® water ballast technology ensures the boat is extremely stable at rest.

Onboard, the 670C's spacious cuddy cabin configuration and fold-away rear bench seat creates a huge cockpit fishing area, while the generous internal depth and Game Lock™ coaming ensure a comfortable fish-fighting position. The functional helm station allows for installation of the latest large-screen marine electronics, the spacious cabin offers

overnighting capabilities, while the fully-welded checkerplate deck is extremely easy to clean after a solid day on the water.

Strong aluminium rod holders, livebait tank, in-floor fish storage tank, berley bucket, large-volume storage pockets, rocket launcher, baitboard and optional deck wash and anchor winch are among a long list of fishing-related features.

Rated to carry a 150-200hp outboard, the 670C's superior performance capabilities, 190L fuel capacity (long-range tank also available), huge cockpit fishing area, heavy-duty checkerplate deck and extensive options list make this boat ideal for serious anglers who want a boat that can handle extended offshore journeys.

As with all models in Bar Crusher's cuddy cabin range, the folding gas-strut roof (with side clears) provides much-needed protection from the elements while on the water, yet when folded it reduces the on-trailer height by around a metre for easy storage under carports and in low garages.

The 670C's roof folds down to create a convenient 2150mm overall storage height.



490WR



Build & quote
your Bar Crusher at
barcrusher.com.au

Bar Crusher's 490WR is the boat anglers have been waiting for...

Designed for lure casters and trollers who target fish in freshwater, estuaries and inshore, extensive testing has proved the 490WR's on-water performance is outstanding – with the ability to handle 20kt of breeze and messy wind chop like it's a much larger boat.

Measuring 4.90m LOA, with a 2.00m beam, and constructed from heavy duty, high-tensile 4mm (bottom sides) and 3mm (top sides) marine grade plate aluminium, the 490WR's ultra-smooth ride is the result of its high-tech Waveslicer® non-pounding, deep-V hull, while the expertly-engineered Rigideck® sub-floor system ensures maximum hull strength. The boat is extremely stable at rest, thanks to Bar Crusher's exclusive Quickflow® water ballast technology.

Built on Bar Crusher's evolutionary Gen2™ hull design, the 490WR combines key features including an optimised wider chine aft and Delta Flare™ – delivering greater hydrodynamic lift for efficient planing and excellent fuel economy, a higher

bow attitude and better spray deflection for a drier ride. Onboard, the functional centre console allows for installation of all gauges and controls (as well as offers convenient storage) to create a full walk-around fishing area, the hatch in the forward casting platform opens to reveal even more storage, while the fully-welded checkerplate deck is extremely easy to clean after a solid day on the water.

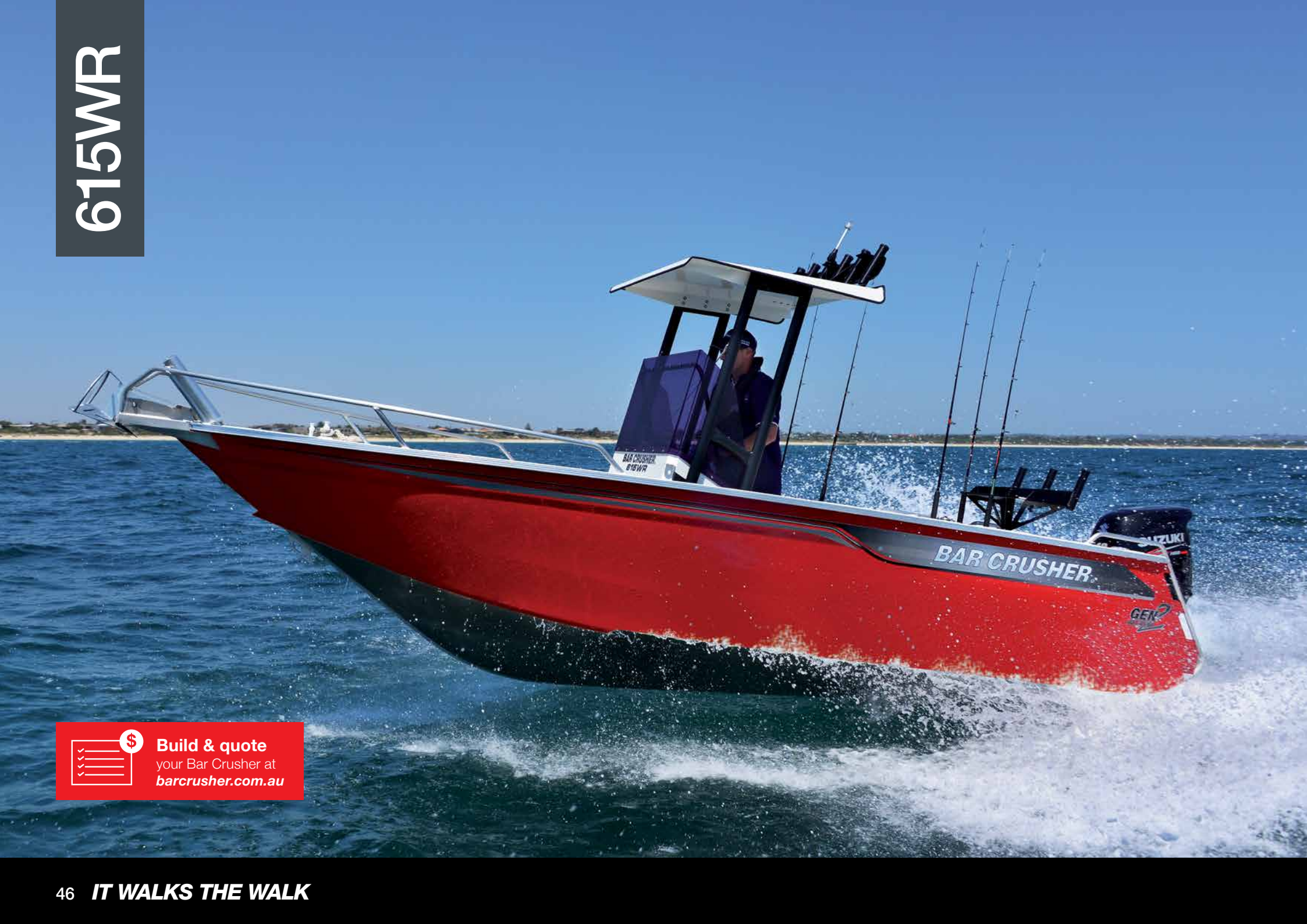
Strong aluminium rod holders, heavy duty boarding ladder, berley bucket and muncher, LED lighting and other items are among the list of standard features, while owners can customise their boats from the 490WR options list.

Incorporating a 60L underfloor fuel tank and rated to carry a 40-70hp outboard, the dry tow weight of the 490WR is just 800kg, ensuring this boat is easily towable by smaller vehicles – and it can be launched just about anywhere.

Every Bar Crusher boat is factory-packaged on a custom-designed trailer, which ensures towing, launching and retrieving is a breeze. Self-centering and aligning perfectly every time, Bar Crusher's innovative Bar Catch™ system also allows for single-handed launch and retrieve.



615WR



 **Build & quote**
your Bar Crusher at
barcrusher.com.au

Bar Crusher's 615WR is a classic centre console boat designed for maximum walk-around fishability...

Whether casting lures, trolling livebaits or fighting a decent fish right around the boat, this super-tough sportfishing rig is all business.

Constructed from heavy duty, high-tensile 4mm (bottom sides) and 4mm (top sides) marine grade plate aluminium, the 615WR measures 6.15m LOA with a 2.25m beam. Its high-tech Waveslicer® non-pounding, deep-V hull delivers an ultra-smooth ride, the expertly-engineered Rigideck® sub-floor system ensures maximum hull strength and Bar Crusher's exclusive Quickflow® water ballast technology ensures the boat is extremely stable at rest.

The evolutionary Gen2™ hull design combines key features including a wider negative chine running forward, optimised wider chine aft and the distinctive Delta Flare™ – delivering greater hydrodynamic lift for more efficient planing and

improved fuel economy, a higher bow attitude and better spray deflection for a drier ride, as well as increased stability at rest.

Onboard, a large, fully-sealed and lockable hatch in the forward casting platform opens to reveal a cavernous storage area to keep stowed gear out of the weather, while the padded icebox seating arrangement at the helm ensures maximum fishing space. Bar Crusher's exclusive Game Lock™ coaming also creates a comfortable fish-fighting position.

Strong aluminium rod holders, T-top rocket launcher, livebait tank, in-floor fish storage tank, berley bucket, large-volume storage pockets, baitboard and optional deck wash and anchor winch are among a long list of fishing-related features.

When towing, the pivoting T-top folds down for a more aerodynamic tow height. On the water, the addition of a set of clears creates a comfortable area behind the console when screaming back to the ramp in 20kt of breeze.

Rated to carry a 115-150hp outboard, the 615WR's superior performance capabilities, 130L fuel capacity (long-range tank also available) and spacious walk-around configuration make it ideal for anglers chasing inshore pelagics and reef fish all around Australia's coastline.



535XS



 **Build & quote**
your Bar Crusher at
barcrusher.com.au

Bar Crusher's 535XS is designed for serious anglers...

Designed for lure casting and trolling, this sleek, purpose-built sportfishing boat is perfect for targeting everything from barra, bass and bream through to flathead, snapper and kingfish.

Measuring 5.35m LOA, with a 2.15m beam, the 535XS is constructed from heavy duty, high-tensile 4mm (bottom sides) and 3mm (top sides) marine grade plate aluminium. Its high-tech Waveslicer® non-pounding, deep-V hull delivers an ultra-smooth ride, the expertly-engineered Rigideck® sub-floor system ensures maximum hull strength and Bar Crusher's exclusive Quickflow® water ballast technology ensures the boat is extremely stable at rest.

Built on Bar Crusher's evolutionary Gen2™ hull design, the 535XS combines key features including a wider negative chine running forward, optimised wider chine aft and the distinctive Delta Flare™ – delivering greater hydrodynamic lift for efficient planing and excellent fuel economy, a higher bow attitude and better spray deflection for a drier ride, as well as increased stability at rest.

Onboard, a large, fully-sealed and lockable hatch in the forward casting platform opens to reveal a cavernous storage area to keep stowed gear out of the weather, an optional bow-mount electric motor plate can be welded to the wide sidedeck, while the functional internal depth will ensure everyone feels secure when out on the water.

The well-positioned centre console allows for installation of all gauges and controls, as well as offers convenient storage, while the optional seating provides flexible configurations that can be removed altogether for maximum fishing space.

Strong aluminium rod holders, livebait tank, in-floor fish storage tank, berley bucket, large-volume storage pockets, baitboard and optional deck wash and anchor winch are among a long list of fishing-related features. Rod lockers can also be installed to specification.

Rated to carry a 70-100hp outboard, combined with a 100L fuel capacity, the 535XS's superior performance capabilities and spacious centre console configuration make it ideal for serious anglers looking for maximum versatility.



615XS



 **Build & quote**
your Bar Crusher at
barcrusher.com.au

Bar Crusher's 615XS is a hardcore fishing machine with maximum flexibility...

Nothing beats an open boat for 'fishability' and the 615XS – with its rear centre console, re-positional seating and forward casting deck – delivers exactly what hardcore anglers demand.

Constructed from heavy duty, pre-stressed 4mm (bottom sides) and 4mm (top sides) marine grade plate aluminium this ultra-tough centre console sportfishing boat is equally at home in the Top End targeting barra as it is offshore chasing marlin.

Measuring 6.15m LOA with a 2.25m beam, the 615XS's ultra-smooth ride is the result of its high-tech Waveslicer® non-pounding, deep-V hull, while the expertly-engineered Rigideck® sub-floor system ensures maximum hull strength. The boat is extremely stable at rest, thanks to Bar Crusher's exclusive Quickflow® water ballast technology.

The evolutionary Gen2™ hull design combines key features including a wider negative chine running forward, optimised

wider chine aft and the distinctive Delta Flare™ – delivering greater hydrodynamic lift for more efficient planing and improved fuel economy, a higher bow attitude and better spray deflection for a drier ride, as well as increased stability at rest.

A fully-sealed and lockable hatch in the forward casting platform opens to reveal a cavernous storage area, which is perfect to stow camping gear out of the weather for extended trips to remote fishing destinations. Spigots in the deck allow seats to be moved around the boat or taken out altogether. Bar Crusher's exclusive Game Lock™ coaming also creates a comfortable fish-fighting position.

Strong aluminium rod holders, livebait tank, in-floor fish storage tank, berley bucket, large-volume storage pockets, baitboard and optional deck wash and anchor winch are among a long list of fishing-related features. Rod lockers can also be installed to specification.

Rated to carry a 115-150hp outboard, the 615XS's superior performance capabilities, 130L fuel capacity (long-range tank also available) and spacious centre console configuration make it ideal for serious anglers.



670XS



 **Build & quote**
your Bar Crusher at
barcrusher.com.au

Bar Crusher's 670XS is designed for the Top End...

The 670XS's ultra-tough construction, rear centre console, re-positional seating, forward casting deck and massive underfloor storage deliver exactly what hardcore anglers demand.

Constructed from heavy duty, high-tensile 5mm (bottom sides) and 4mm (top sides) marine grade plate aluminium, the 670XS measures 6.70m LOA with a 2.35m beam. Its high-tech Waveslicer® non-pounding, deep-V hull delivers an ultra-smooth ride, the expertly-engineered Rigideck® sub-floor system ensures maximum hull strength and Bar Crusher's exclusive Quickflow® water ballast technology ensures the boat is extremely stable at rest.

The Quickflow® system incorporates a cavity running the full length of the keel that quickly fills with water when the boat is stationary, which lowers the chines into the water for greater stability, and drains in seconds as the boat moves forward to allow it to leap effortlessly onto the plane. The optional Bar Flap™ can be used to keep water out, to make the boat

lighter in shallow-water applications; or to trap water in, to make the boat heavier when running in extreme rough-water situations, if caught in bad weather.

The functional centre console allows for installation of all gauges and controls, as well as offers convenient storage, while Bar Crusher's exclusive Game Lock™ coaming creates a comfortable fish-fighting position. The fully-welded checkerplate deck is also extremely easy to clean after solid days on the water.

Strong aluminium rod holders, livebait tank, in-floor fish storage tank, berley bucket, large-volume storage pockets, baitboard and optional deck wash and anchor winch are among a long list of fishing-related features. Rod lockers can also be installed to specification.

Rated to carry a 150-175hp outboard, the 670XS's superior performance capabilities, 170L fuel capacity (long-range tank also available), expansive fishing area, heavy-duty checkerplate deck and extensive options list make this boat ideal for serious anglers searching for a boat that can handle extended coastal journeys.



585HT



 **Build & quote**
your Bar Crusher at
barcrusher.com.au

Bar Crusher's 585HT has the presence of much bigger boats...

Bringing all-weather, hard top protection to those looking for a serious fishing machine in a compact package, the 585HT is ideal for bay and inshore fishing.

Measuring 5.85m LOA, with a 2.15m beam, and constructed from heavy duty, high-tensile 4mm (bottom sides) and 3mm (top sides) marine grade plate aluminium, it incorporates all of Bar Crusher's exclusive features – high-tech Waveslicer® non-pounding, deep-V hull; super-strong Rigideck® sub-floor system with fully-welded checkerplate deck; and Quickflow® water ballast technology for superior stability at rest.

Built on Bar Crusher's evolutionary Gen2™ hull design, the 585HT combines key features including a wider negative chine running forward, optimised wider chine aft and the distinctive Delta Flare™ – delivering greater hydrodynamic lift for efficient planing and excellent fuel economy, a higher bow attitude and better spray deflection for a drier ride, as well as increased stability at rest. Note the shape of the Delta Flare at the transom and the distinctive shape of the Quickflow® water ballast outlet.

This innovation incorporates a cavity running the full length of the keel that quickly fills with water when the boat is stationary, which lowers the chines into the water for greater stability, and drains in seconds as the boat moves forward.

The 585HT's toughened safety glass windscreen and all-weather hard top allow full standing room and an unobstructed 360 degree view from the helm. The hard top configuration and fold-away rear bench seat combine to create a huge cockpit fishing area, the Game Lock™ coaming ensures a comfortable fish-fighting position, while the helm station allows for fitting of the latest large-screen marine electronics. The fully-welded checkerplate deck is extremely easy to clean after a solid day on the water.

Strong aluminium rod holders, livebait tank, in-floor fish storage tank, berley bucket, storage pockets, rocket launcher, baitboard and optional deck wash and anchor winch are among a long list of fishing-related features.

Rated to carry a 90-115hp outboard, combined with a 110L fuel capacity (long-range tank also available), the 585HT has everything the bigger boats have, albeit in a compact, easy-to-tow package.



615HT



 **Build & quote**
your Bar Crusher at
barcrusher.com.au

Bar Crusher's 615HT hits the mark as serious inshore and offshore fishing machine...

Whether charging the bar as you're heading out fishing or punching into a messy sea on your way back to the ramp, Bar Crusher's 615HT will get you there – quickly, safely and in comfort. Nothing beats a hard top boat for protection from the elements.

Constructed from heavy duty, high-tensile 4mm (bottom sides) and 4mm (top sides) marine grade plate aluminium, the 615HT measures 6.15m LOA with a 2.25m beam. Its high-tech Waveslicer® non-pounding, deep-V hull delivers an ultra-smooth ride, the expertly-engineered Rigideck® sub-floor system ensures maximum hull strength and Bar Crusher's exclusive Quickflow® water ballast technology ensures the boat is extremely stable at rest.

The evolutionary Gen2™ hull design combines key features including a wider negative chine running forward, optimised wider chine aft and the distinctive Delta Flare™ – delivering greater hydrodynamic lift for more efficient planing and

improved fuel economy, a higher bow attitude and better spray deflection for a drier ride, as well as increased stability at rest.

The 615HT's toughened safety glass windscreen and all-weather hard top allows full standing room and an unobstructed 360 degree view from the helm, while deluxe helm seats are mounted on top of heavy-duty seat boxes with convenient tackle storage.

The hard top configuration and fold-away rear bench seat creates a huge cockpit fishing area, and Bar Crusher's exclusive Game Lock™ coaming ensures a comfortable fish-fighting position. The helm station has ample space for large-screen marine electronics, while the fully-welded checkerplate deck is extremely easy to clean.

Strong aluminium rod holders, livebait tank, in-floor fish storage tank, berley bucket, large-volume storage pockets, rocket launcher, baitboard and optional deck wash and anchor winch are among a long list of fishing-related features.

Rated to carry a 115-150hp outboard, the 615HT's superior performance capabilities, 140L fuel capacity (long-range tank also available) and all-weather protection are just a few reasons why it's one of the most versatile sportfishing boats in its class.



670HT



 **Build & quote**
your Bar Crusher at
barcrusher.com.au

Bar Crusher's 670HT is one of the most popular and versatile models in the hard top range...

Whether charging the bar to head offshore or fishing overnight at anchor, Bar Crusher's 670HT will get you there – quickly, safely and in comfort. Nothing beats a hard top boat for protection from the elements.

Constructed from heavy duty, high-tensile 5mm (bottom sides) and 4mm (top sides) marine grade plate aluminium, the 670HT measures 6.70m LOA with a 2.35m beam. Its high-tech Waveslicer® non-pounding, deep-V hull delivers an ultra-smooth ride, the expertly-engineered Rigideck® sub-floor system ensures maximum hull strength and Bar Crusher's exclusive Quickflow® water ballast technology ensures the boat is extremely stable at rest.

The 670HT's toughened safety glass windscreen and all-weather hard top allows full standing room and an unobstructed 360-degree view from the helm. Deluxe helm seats are mounted on top of heavy-duty seat boxes with convenient tackle storage, while the functional helm station

allows for installation of the latest large-screen marine electronics. Slide opening side windows allow good airflow on hot days, while the comfortable bunk arrangement provides accommodation for overnight trips.

The hard top configuration and fold-away rear bench seat creates a huge cockpit fishing area that's ready for serious action – generous internal depth with secure toe holds, Game Lock™ coaming for a comfortable fish-fighting position, step-through transom, marlin board with berley bucket, rod holders, plumbed livebait tank, in-floor fish storage tank and large-volume storage pockets which will easily accommodate tagpoles, gaffs and other essential equipment.

Rocket launcher, hydraulic steering and dual battery system are standard, while the impressive options list includes deck wash, overhead LED lighting, Stress Free anchor winch, and more.

Rated to carry a 150-200hp outboard, the 670HT's superior performance capabilities, 190L fuel capacity (long-range tank also available), all-weather hard top, and maximum fishability are just a few reasons why this Bar Crusher earned the title of Australia's Greatest Boat – as voted by the country's most experienced boating writers.



730HT



 **Build & quote**
your Bar Crusher at
barcrusher.com.au

This model is also available in a fully-enclosed and lockable pilothouse style. (See the Bar Crusher website for all model configurations.)

Bar Crusher's 730HT is a bullet-proof offshore fishing machine for hardcore bluewater anglers...

From charging offshore to battle large pelagics to targeting inshore species with the family onboard, Bar Crusher's 730HT will get you there – quickly, safely and in comfort.

Constructed from heavy duty, high-tensile 5mm (bottom sides) and 4mm (top sides) marine grade plate aluminium, the 730HT measures 7.30m LOA with a 2.45m beam. Its high-tech Waveslicer® non-pounding, deep-V hull delivers an ultra-smooth ride, the expertly-engineered Rigideck® sub-floor system ensures maximum hull strength and Bar Crusher's exclusive Quickflow® water ballast technology ensures the boat is extremely stable at rest.

The 730HT's toughened safety glass windscreen and all-weather hard top allows full standing room and an unobstructed 360-degree view, while deluxe helm seats are mounted on top of heavy-duty seat boxes with storage. The helm station has ample space for electronics and the spacious cabin provides accommodation for overnight trips.

The massive cockpit fishing area is ready for serious action too – generous internal depth with secure toe holds, Game Lock™ coaming for a comfortable fish-fighting position, self-draining deck with scuppers, step-through transom, marlin board with berley bucket, rod holders, plumbed livebait tank, in-floor fish storage tank and large-volume storage pockets which will easily accommodate tagpoles, gaffs and other essential equipment. The fully-welded checkerplate deck is extremely easy to clean after a solid day on the water.

Rocket launcher, hydraulic steering, dual battery system and Hella low-voltage coaming lights are fitted as standard, while Bar Crusher's impressive options list for the 730HT includes a roller-door lock-up cabin, deck wash, overhead LED lighting, Stress Free anchor winch, electric macerator toilet and more.

Rated to carry up to a 250hp outboard, the 730HT's superior performance capabilities, 330L fuel capacity (extreme long-range tank also available) and all-weather protection are just a few reasons why this model has quickly earned a reputation as one of the most versatile hard top trailerable sportfishing boats on the market.



780HT



Build & quote
your Bar Crusher at
barcrusher.com.au

This model is also available in a fully-enclosed and lockable pilothouse style. (See the Bar-Crusher website for all model configurations.)

Bar Crusher's 780HT is designed and built for long-range offshore sportfishing...

As the flagship Fishing Weapon of Bar Crusher's range (available in open cabin, lockable cabin and full pilothouse configuration), the 780HT will get you wherever you want to go. Whether heading out fishing miles offshore or punching into a messy sea on a long run back to the ramp, the 780HT's functional hard top offers complete protection from the elements while the super-strong hull will eat up whatever weather is thrown its way.

Constructed from heavy duty, high-tensile 5mm (bottom sides) and 4mm (top sides) marine grade plate aluminium, the 780HT measures 7.80m LOA with a 2.45m beam. Its high-tech Waveslicer® non-pounding, deep-V hull delivers an ultra-smooth ride, the expertly-engineered Rigideck® sub-floor system ensures maximum hull strength and Bar Crusher's exclusive Quickflow® water ballast technology ensures the boat is extremely stable at rest.

The 780HT's toughened safety glass windscreen and all-

weather hard top allows full standing room and an unobstructed 360-degree view. Deluxe helm seats are mounted on top of heavy-duty seat boxes, while the helm station has ample space for large-screen marine electronics.

Full-length 2.10m bunks (with infill cushions for full V-berth), stainless steel fridge, plumbed sink, food preparation area and optional gas burner stove facility make this the ultimate trailerable sportfisher for extended offshore adventures.

The massive cockpit fishing area is ready for serious action too – generous internal depth with secure toe holds, Game Lock™ coaming for a comfortable fish-fighting position, self-draining deck with scuppers, step-through transom, marlin board with berley bucket, rod holders, plumbed livebait tank, in-floor fish storage tank and large-volume storage pockets which will easily accommodate tagpoles, gaffs and other equipment.

The standard inclusions and options list for the 780HT is very impressive!

Rated to carry up to a 300hp outboard, the 780HT's superior performance capabilities, 330L fuel capacity (extreme long-range tank also available) and all-weather protection set it apart as the ultimate Fishing Weapon.



COLOUR SCHEMES



A range of standard
paint colours are available...



WHITE HULL

Colour scheme highlight stripes & upholstery Black | Blue | Charcoal | Red | Silver | Green

EVERY INDUSTRY HAS A LEADER



MAROON



VIVID YELLOW



CRIMSON RED



ORANGE FIRE



MIDNIGHT BLUE



BROOKLANDS BLUE



MINT GREEN



ADMIRALTY GREY



EBONY BLACK



CHARCOAL

Note: Colours in this brochure are representative only and may appear different in real life.

SPECIFICATIONS, FEATURES & OPTIONS



Specifications	490C	535C	575C	615C	670C	490WR	615WR	670WR	730WR	585HT	615HT	670HT	730HT	780HT	535SC	535XS	615XS	670XS	730XS
Hull Length	4900	5350	5750	6150	6700	4900	6150	6700	7300	5850	6150	6700	7300	7800	5350	5350	6150	6700	7300
Beam	2000	2150	2150	2250	2350	2000	2250	2350	2450	2150	2250	2350	2450	2450	2150	2150	2250	2350	2450
Bottom Sides	4mm	4mm	4mm	4mm	5mm	4mm	4mm	5mm	5mm	4mm	4mm	5mm	5mm	5mm	4mm	4mm	4mm	5mm	5mm
Top Sides	3mm	3mm	3mm	4mm	4mm	3mm	4mm	4mm	4mm	3mm	4mm	4mm	4mm	4mm	3mm	3mm	4mm	4mm	4mm
Internal Freeboard – Floor to Side Deck	600mm	690mm	730mm	780mm	800mm	600mm	780mm	800mm	720mm	730mm	780mm	800mm	720mm	720mm	690mm	690mm	780mm	800mm	720mm
Transom Shaft Length	20"	25"	25"	25"	25"	20"	25"	25"	25"	25"	25"	25"	25"	25"	25"	25"	25"	25"	25"
Fuel Capacity	60 L	100 L	110 L	140 L	190 L	60 L	130 L	170 L	290 L	110 L	140 L	190 L	330 L	330 L	100 L	100 L	130 L	170 L	290 L
Tow Weight (Dry Weight) kg	840	1150	1360	1500	1690	800	1390	1600	2150	1430	1620	1880	2260	2380	1085	1085	1480	1750	2150
Minimum Horsepower	40	60	90	115	150	40	115	150	200	90	115	150	200	200	60	60	115	150	175
Maximum Horsepower	70	100	115	150	200	70	150	175	250	115	150	200	250	300	100	100	150	175	250
Overall Trailer Length (hitch-prop)	6100	6750	7200	7300	8000	6100	7300	8000	9100	7200	7400	8000	9100	9250	6750	6750	7300	8000	9100
Overall Trailer Width	2100	2100	2150	2250	2350	2100	2250	2350	2450	2150	2250	2350	2450	2450	2100	2100	2250	2350	2450
Overall Height on Trailer	2150	2150	3100	3100	3050	1800	3100	3050	3350	3050	3050	3200	3400	3300	1950	1950	2130	2400	2350
Overall Height Roof Folded	1900	1900	2150	2200	2150	NA	2350	2300	2400	NA	NA	NA	NA	NA	NA	NA	NA	NA	NA

EVERY INDUSTRY HAS A LEADER



Specifications	490C	535C	575C	615C	670C	490WR	615WR	670WR	730WR	585HT	615HT	670HT	730HT	780HT	535SC	535XS	615XS	670XS	730XS
Waveslicer® non-pounding hull	✓	✓	✓	✓	✓	✓	✓	✓	✓	✓	✓	✓	✓	✓	✓	✓	✓	✓	✓
Rigideck® world's toughest sub-floor system	✓	✓	✓	✓	✓	✓	✓	✓	✓	✓	✓	✓	✓	✓	✓	✓	✓	✓	✓
Quickflow® water ballast system	✓	✓	✓	✓	✓	✓	✓	✓	✓	✓	✓	✓	✓	✓	✓	✓	✓	✓	✓
Bar Crusher custom-designed trailer	✓	✓	✓	✓	✓	✓	✓	✓	✓	✓	✓	✓	✓	✓	✓	✓	✓	✓	✓
Hydraulic steering		✓	✓	✓	✓		✓	✓	✓	✓	✓	✓	✓	✓	✓	✓	✓	✓	✓
Step-through transom			✓	✓	✓		✓	✓	✓	✓	✓	✓	✓	✓			✓	✓	✓
Fully-welded and sealed checkerplate floor	✓	✓	✓	✓	✓	✓	✓	✓	✓	✓	✓	✓	✓	✓	✓	✓	✓	✓	✓
Toughened safety glass windscreen	✓	✓	✓	✓	✓					✓	✓	✓	✓	✓					
Super-strong windscreen frame – C-channel design	✓	✓	✓	✓	✓														
Tough acrylic windscreen							✓	✓	✓						✓	✓	✓	✓	✓
Hard top roof with rod rack										✓	✓	✓	✓	✓					
In-floor fish storage	✓	✓	✓	✓	✓	✓	✓	✓	✓	✓	✓	✓	✓	✓	✓	✓	✓	✓	✓
Bow sprit and roller (split rail)	✓	✓	✓	✓	✓	✓	✓	✓	✓	✓	✓	✓	✓	✓	✓	✓	✓	✓	✓
Fast-draining anchor well with winch plate	✓	✓	✓	✓	✓	✓	✓	✓	✓	✓	✓	✓	✓	✓	✓	✓	✓	✓	✓

SPECIFICATIONS, FEATURES & OPTIONS



Specifications	490C	535C	575C	615C	670C	490WR	615WR	670WR	730WR	585HT	615HT	670HT	730HT	780HT	535SC	535XS	615XS	670XS	730XS
Deck grip - non-skid deck grip pads	✓	✓	✓	✓	✓	✓	✓	✓	✓	✓	✓	✓	✓	✓	✓	✓	✓	✓	✓
Swim platform checker plate (marlin board style)	✓	✓	✓	✓	✓	✓	✓	✓	✓	✓	✓	✓	✓	✓	✓	✓	✓	✓	✓
Transducer / trim tab mounting plates	✓	✓	✓	✓	✓	✓	✓	✓	✓	✓	✓	✓	✓	✓	✓	✓	✓	✓	✓
Storage pockets (fore, aft and sides)	✓	✓	✓	✓	✓	✓	✓	✓	✓	✓	✓	✓	✓	✓	✓	✓	✓	✓	✓
Live bait tank (plumbed)	OPT	✓	✓	✓	✓	OPT	✓	✓	✓	✓	✓	✓	✓	✓	✓	✓	✓	✓	✓
Dive / swim ladder	✓	✓	✓	✓	✓	✓	✓	✓	✓	✓	✓	✓	✓	✓	✓	✓	✓	✓	✓
Berley bucket and muncher	✓	✓	✓	✓	✓	✓	✓	✓	✓	✓	✓	✓	✓	✓	✓	✓	✓	✓	✓
LED navigation lights	✓	✓	✓	✓	✓	✓	✓	✓	✓	✓	✓	✓	✓	✓	✓	✓	✓	✓	✓
LED anchor lights	✓	✓	✓	✓	✓	✓	✓	✓	✓	✓	✓	✓	✓	✓	✓	✓	✓	✓	✓
LED coaming lights	OPT	OPT	✓	✓	✓	OPT	✓	✓	✓	✓	✓	✓	✓	✓	OPT	OPT	✓	✓	✓
Cast aluminium rod holders (In deck)	✓	✓	✓	✓	✓	✓	✓	✓	✓	✓	✓	✓	✓	✓	✓	✓	✓	✓	✓
Battery isolation switch	✓	✓	✓	✓	✓	✓	✓	✓	✓	✓	✓	✓	✓	✓	✓	✓	✓	✓	✓
Dual battery system	OPT	OPT	✓	✓	✓	OPT	✓	✓	✓	✓	✓	✓	✓	✓	OPT	OPT	✓	✓	✓
Clear bowl fuel filter	✓	✓	✓	✓	✓	✓	✓	✓	✓	✓	✓	✓	✓	✓	✓	✓	✓	✓	✓
Illuminated switches	✓	✓	✓	✓	✓	✓	✓	✓	✓	✓	✓	✓	✓	✓	✓	✓	✓	✓	✓
Bilge pump	✓	✓	✓	✓	✓	✓	✓	✓	✓	✓	✓	✓	✓	✓	✓	✓	✓	✓	✓

EVERY INDUSTRY HAS A LEADER



Specifications	490C	535C	575C	615C	670C	490WR	615WR	670WR	730WR	585HT	615HT	670HT	730HT	780HT	535SC	535XS	615XS	670XS	730XS
Power outlet on dash (12V DC)	✓	✓	✓	✓	✓	✓	✓	✓	✓	✓	✓	✓	✓	✓	✓	✓	✓	✓	✓
Folding rear seat			✓	✓	✓		✓	✓	✓	✓	✓	✓	✓	✓			✓	✓	✓
Quality driver and passenger seating	✓	✓	✓	✓	✓	✓	✓	✓	✓	✓	✓	✓	✓	✓	✓	✓	✓	✓	✓
V berth front bunks		✓	✓	✓	✓					✓	✓	✓	✓	✓					
Self-draining deck with scuppers								✓					✓	✓					✓
Folding roof with gas struts			✓	✓	✓														
Rocket launcher (for folding roof)			✓	✓	✓		✓	✓	✓										
Pivoting T-top							✓	✓	✓										
Live bait tank plumbing	OPT	✓	✓	✓	✓	OPT	✓	✓	✓	✓	✓	✓	✓	✓	✓	✓	✓	✓	✓
Baitboard with rod holders	✓	✓	✓	✓	✓	✓	✓	✓	✓	✓	✓	✓	✓	✓	✓	✓	✓	✓	✓
Bar Catch™ launch/retrieve system	✓	✓	✓	✓	✓	✓	✓	✓	✓	✓	✓	✓	✓	✓	✓	✓	✓	✓	✓
Lockable casting platform							✓	✓	✓						✓	✓	✓	✓	✓
Ski pole																			
Trim tabs																			
Toilet																			
FishMat™ floor matting																			

Note: Some dealers may package with different standard inclusions. This list is 'typical' packaging. Please confirm with your dealer which items are in your package.

SPECIFICATIONS, FEATURES & OPTIONS



Functional bunk style provides comfortable accommodation



Game Lock™ coaming for comfortable fish-fighting position



Toilet with privacy curtain available as an option in C and HT models



Removable baitboard with replaceable cutting surface



Easy-access fuel filler. Bar Crusher's fuel tank system has no leaky sub-floor hoses and you can see how much fuel you have left



Side pocket clip on rod holders available as an accessory



Highest quality LED lighting throughout (coaming light pictured)



C-Tek charging port in the dash to keep batteries topped up while in storage



Macerator toilet available as an option



Live bait tank



Online boat builder
See the full range of standard features and options at barcrusher.com.au

EVERY INDUSTRY HAS A LEADER



FishMat™ floor matting.
Great to stand on.



Electric anchor winch – never
manually pull-up the anchor again!



Easy-access step-through transom



Trim tabs provide great side-to-side trim
control for best performance



V berth (bunk infill available to make
full V berth)



Berley bucket and muncher standard
in every Bar Crusher



Dual batteries with isolation switch.
Don't go offshore without two batteries



Folding rear seat and step



Deck wash option available



Secure anchor system. Ensures your
anchor stays put in rough conditions



Innovative seat pedestal design includes
plastic slide-out tackle trays



In-floor fish well



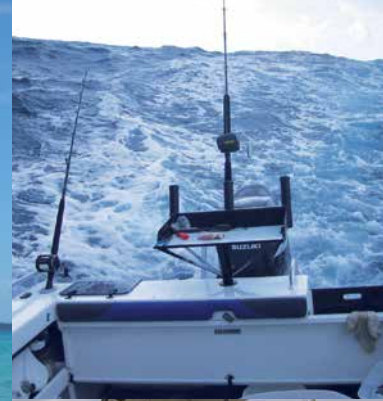
Bar Catch™. Innovative idea to assist with
single-handed launch and retrieve



Ski pole replaces bait board in seconds



Heavy-duty swim ladder for swimming
or diving



THANK YOU BAR CRUSHER OWNERS FOR YOUR SUPPORT





JOIN THE CONVERSATION

www.facebook.com/BarCrusherBoatsOFFICIAL



SHARE YOUR ADVENTURES
#barcrusher

www.instagram.com/barcrusherboats

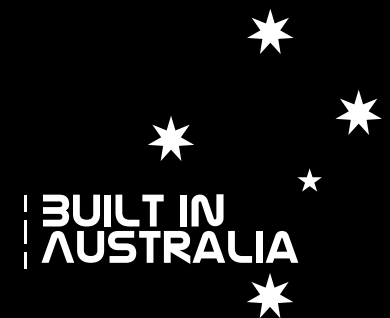




Visit our website and subscribe to the newsletter
to receive Bar Crusher news and updates:

barcrusher.com.au

BAR CRUSHER®
High-performance plate aluminium boats



Disclaimer: Warranty terms and conditions are stated on Bar Crusher's website at barcrusher.com.au. Weights and measurements provided in this brochure are advisory only. Due to variations in packaging and fit-out, it is essential that all weights and measurements are confirmed with your dealer prior to ordering. Photographs in this brochure are indicative of the style, fit-out and packaging of Bar Crusher boats, however Bar Crusher reserves the right to make changes to its products at any time, without notice, to continue to develop and improve the product range. Photographs in this brochure show boats being used in extreme conditions. These photographs are for display purposes only. The images were taken under controlled conditions using highly-competent skippers. We specifically advise that users of Bar Crusher boats do not perform similar manoeuvres as depicted in this brochure and drive the boats cautiously at all times.



FISHING WEAPONS®

Your local Bar Crusher dealer is...

BAR CRUSHER®
High-performance plate aluminium boats

Bar Crusher HQ – showroom and factory
5 Quality Drive, Dandenong South, Melbourne VIC Australia 3175
Office: 03 9792 2999 Email: sales@barcrusher.com.au

barcrusher.com.au