

# Wednesday Twilight Sailing Cruise Information

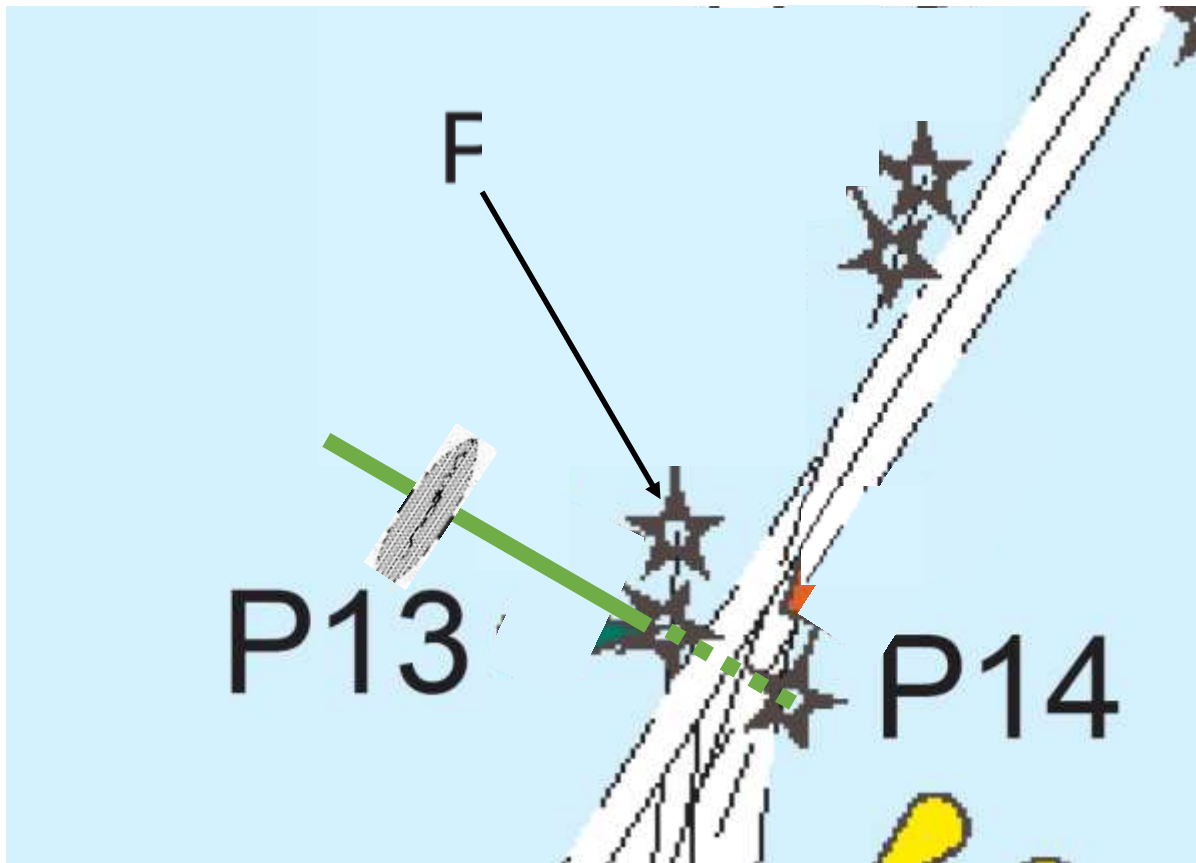
All skippers who participate in the Wednesday Twilight Sail (whether they nominate or not) are reminded of the following:

- ✚ All yachts must monitor VHF Channel 16 as a minimum. A dual watch of Channel 16 and 77 is preferable.
- ✚ The first yacht to cross the finish line must notify the fleet on Channel 77 that they are the first to complete the course. This is the reason for monitoring Channel 77 as well as 16, especially toward the end of the course.
- ✚ **The course has been laid to the west of Platypus Channel. A condition of the cruise is that all yachts are to remain to the west of Platypus Channel and may only enter the channel for safety requirements. This is an agreement between several parties including Maritime Safety Queensland (MSQ), the Port of Townsville and commercial users of the port. Yachts observed sailing in, or to the east of, the channel will face disciplinary action and reported by these parties. They will also be ineligible for prizes.**

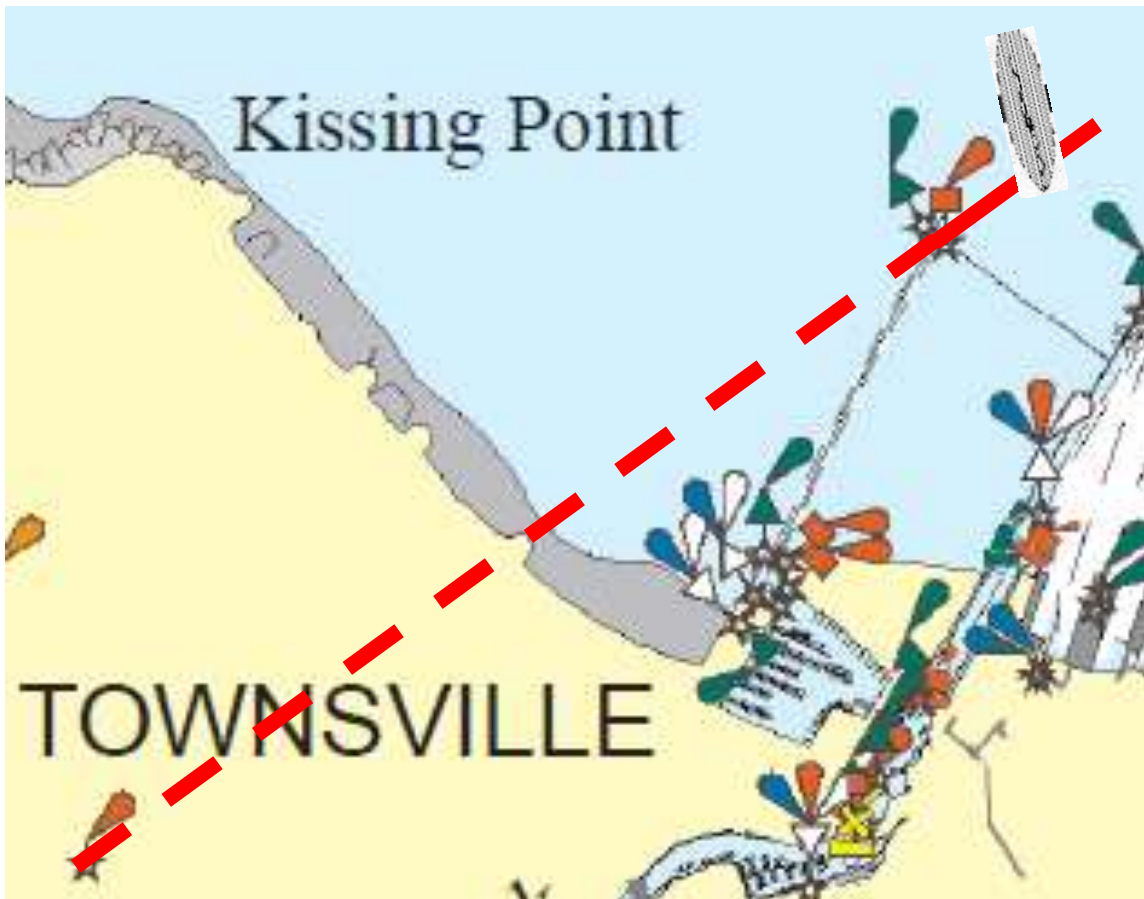
The course:

- ✚ The start line is a transit line that extends to the west of P13 and P14 by no more than 150 metres.
- ✚ TCYC Special Purpose Buoy (laid ~150m west of P7) to port.
- ✚ Middle Reef eastern cardinal marker to port.
- ✚ The finish line is a transit line from the red light on top of Castle Hill and the red Breakwater channel lead light. The finish extends to the north east of the red Breakwater channel lead light. This is located on the rock wall (groyne) at the entrance to the Breakwater channel and the duck pond.





Start line



Finish line