

**The leading
steel fabrication
& rollingstock
maintenance
company in
northern Australia.**



CAPABILITY STATEMENT

Engineering | Drafting | Fabrication | Pipe Welding | Transport
| Design Maintenance | Painting & Blasting | Rail Maintenance



CONTENTS

Company Overview	4
Organisational Chart	5
History	6
Company History	7
Health, Safety & Risk Management	8
Quality	9
Facilities	10
Project Management	12
Abraham Steel & Pipe Fabrications	13
Wulguru Rail	14
Wulguru Wheel	15
Archimedes Engineering	16
REV Cranes	17
Wulguru Steel	18
Wulguru Paint & Blast	19

Our mission is to consistently deliver a high standard of service through our quality, schedule, and integrity across all aspects of our operations. This commitment is underpinned by a strong organisational culture that embraces our core values, empowers our people, and drives high-performance.

ABRAHAM

STEEL & PIPE FABRICATIONS



ARCHIMEDES
ENGINEERING



WULGURU
GROUP
APPRENTICE
ACADEMY

Wulguru Group is your complete solution for large-scale, innovative fabrication, heavy fabrication, maintenance, and engineering services in Australia.

REV CRANES



WULGURU
RAIL



WULGURU
STEEL



WULGURU
WHEEL



WULGURU
BLAST & PAINT



WULGURU
GROUP

COMPANY OVERVIEW

Established in 1976, Wulguru Group is a proudly Australian-owned company and recognised as a leader in heavy mechanical fabrication, rail fleet maintenance, pressure piping, and site construction services.

As one of Northern Australia's largest privately owned engineering, manufacturing, and maintenance companies, we bring five decades of proven expertise and a skilled workforce dedicated to delivering high-quality, reliable steel solutions.

Our extensive in-house capabilities are complemented by highly trained workforce, allowing us to provide complete turnkey solutions with precision and efficiency. We take a holistic, client-focused approach—building lasting partnerships through transparency, reliability, and an unwavering commitment to quality.

We are proud of our reputation as a trusted and dependable partner to some of Australia's most prominent companies. Our strengths lie in our ability to deliver complex, complete one off projects through to ongoing maintenance contracts with precision, efficiency, and unwavering attention to detail.

Industries we serve include:

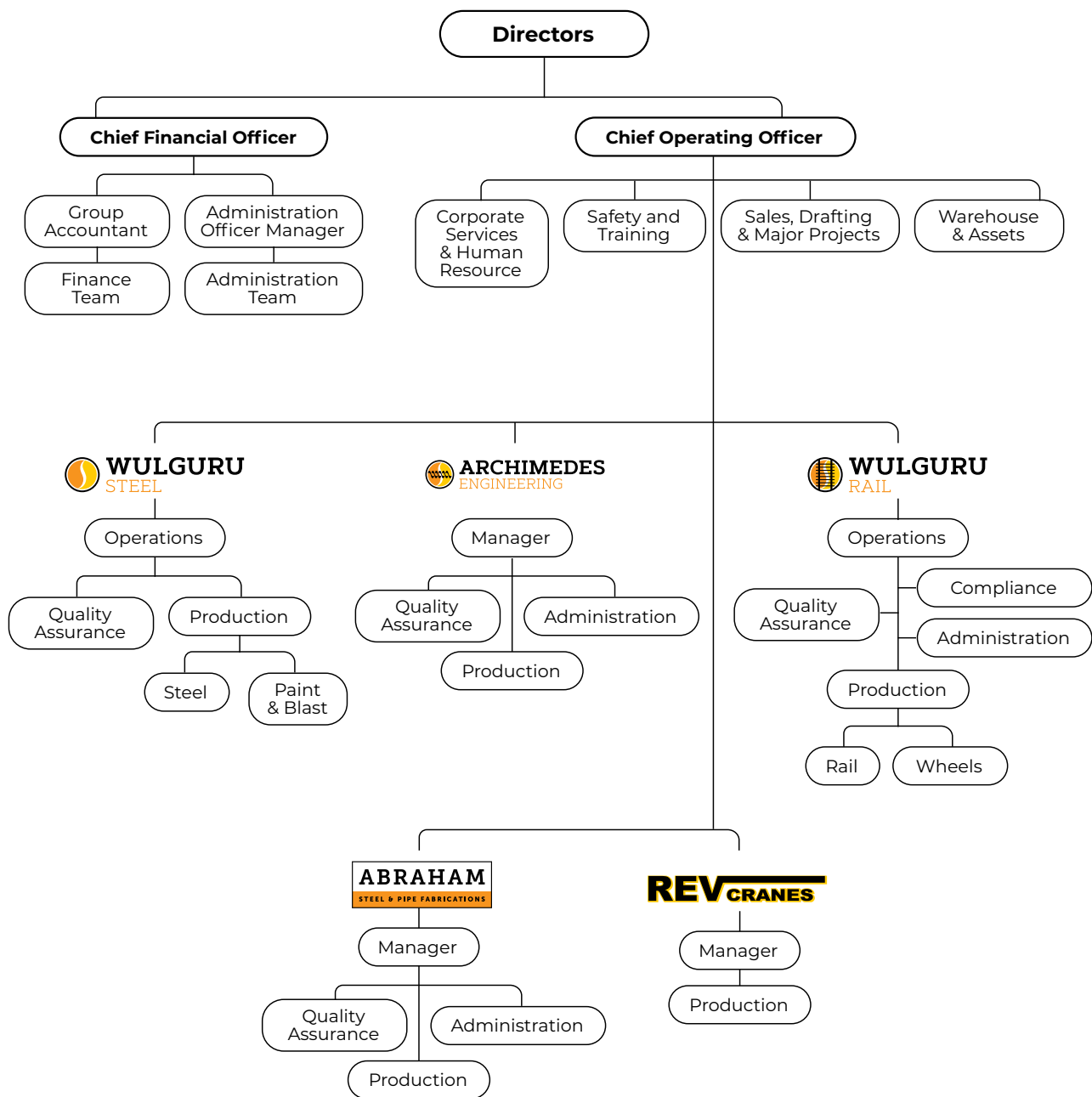
- Construction
- Mining and mineral processing
- Agriculture
- Petroleum
- Government departments
- Infrastructure
- Local councils
- Sugar
- Marine
- Rail
- Fuel
- Food industries

This industry breadth reflects our versatility and capacity to meet a wide range of technical and operational requirements. We maintain full control over every stage of the project lifecycle, from initiation, planning, execution, commissioning to handover.

This vertically integrated model ensures streamlined project delivery, consistent quality, and cost efficiency.



ORGANISATIONAL CHART



HISTORY

From humble beginnings in 1976, Vince Nielsen and John Nash ventured out into the fabrication world on their own starting out as Wulguru Steel. Working under John's house for a period, they soon realised they needed more space to weld, deciding to acquire and move to a vacant block in the nearby suburb of Wulguru in Townsville in 1978. It was a modest workshop, with a small team yet they were delivering challenging large-scale jobs such as a 46 m high steel water reservoir, boiler stacks for a major local sugar mill, and designing batters around the world. With such projects it was a natural progression to grow and acquire new businesses such as Archimedes Engineering, Abrahams Steel & Pipe Fabrications as well as growing their current workforce.

The Wulguru Group has established a strong history of expansion through a combination of sustained organic growth, driven by customer demand, and the strategic acquisition of complementary businesses operating within niche industries.

Our acquisition strategy has focused on businesses with excellent reputations and specialist expertise that were often constrained by capacity. By integrating these companies into the Wulguru Group, we have been able to provide the additional people, processes, systems, and facilities required to unlock their full potential.

This approach has enhanced the services delivered to existing clients, broadened our reach across specialist markets, and strengthened our position as a trusted provider to industries such as mining, defence, agriculture, energy, and infrastructure.

Through this deliberate and balanced approach, the Wulguru Group continues to expand while maintaining a clear focus on quality, innovation, and customer satisfaction.

The ongoing success of the Wulguru Group is founded on the contribution of our talented and experienced workforce. From the company's early years through to today, it has been the dedication and expertise of our people that has shaped who we are.

Many of the team members who joined us in the 1970s remain an integral part of the business, and now, in a reflection of our strong culture and values, their sons and daughters and other family members have also joined the team. This continuity makes the Wulguru Group a truly multigenerational business, built on loyalty, knowledge, and a genuine commitment to excellence.

Today, the Wulguru Group is guided by strong leadership and supported by a highly experienced management structure. Together with our wider management team, we provide the vision, capability, and stability needed to drive sustainable growth while embracing innovation and new opportunities. Our commitment is not only to deliver continued success today, but to position the Group as a leader of choice for our people, our clients, and our communities well into the future.



COMPANY HISTORY

1969

COMMENCEMENT OF
ABRAHAM STEEL & PIPE FABRICATORS

1976

COMMENCEMENT OF
WULGURU SEEL



ACQUIRED
ABRAHAM STEEL & PIPE FABRICATORS

ESTABLISHED
WULGURU WHEELS



COMPLETION OF STAGE 1
RAIL WAGON MANUFACTURING FACILITY

1975

COMMENCEMENT OF
ARCHIMEDES ENGINEERING



2010

ACQUIRED
ARCHIMEDES ENGINEERING

2017

ESTABLISHED
WULGURU RAIL MAINTENANCE

2020

ACQUIRED
REV CRANES



2024

2025

COMPLETION
WULGURU GROUP NEW HEAD OFFICE

HEALTH, SAFETY & RISK MANAGEMENT

Wulguru Group is committed to upholding the highest standards of health and safety across all facets of our operations. We recognise that the wellbeing of our employees, subcontractors, clients, and the broader community is fundamental to the success of our business and integral to our core values.

Our Health and Safety Management System is fully integrated into our operations and is independently certified to ISO 45001:2018, reflecting our commitment to nationally recognised best practice in occupational health and safety.

In support of this, The Wulguru Group maintains an 'A' rating with ISNetwork for works within the fuel industry and holds ONRSR (Office of the National Rail Safety Regulator) accreditation for the safe delivery of rail industry projects.

Our success is underpinned by the active involvement of our shareholders and the strength of our private ownership.

This structure has fostered a culture of safety, continuous improvement and innovation, supported by the deep experience of our workforce, which drives a high level of productivity and excellence in the services we deliver.

Our commitment to safety is embedded in every project, taking pride in their work, which is reflected in the quality and consistency of the outcomes we achieve.

1 Comply with all statutory requirements as the minimum standard

2 Provide safe work methods, procedures, premises and plant

3 Achieve best practice standards through continuous improvement principles

4 Management of change in plant, systems and products

5 Appropriate OH&S training for all employees

6 Train employees to be aware of their responsibilities

7 Appropriate rehabilitation for all injured or unwell staff, on and off the job

8 Working safely as a condition of employment



QUALITY

The Wulguru Group is committed to delivering projects of the highest quality, supported by both robust in-house Quality Assurance systems and independent third-party certification. We hold ISO 9001:2015 Quality Management Accreditation, reinforcing our position as an industry leader recognised for our commercial integrity, quality management practices, and consistent reliability.

Our vertically integrated operations provide full control over all stages of project delivery. We offer in-house estimating, engineering, drafting, and project management capabilities, ensuring seamless coordination from concept through to completion. All equipment undergoes proof assembly or trial runs prior to dispatch, providing assurance that all components meet specifications before arriving on site.

Our dedicated Quality Management Team, supported by welding industry recognised Welding Supervisors, ensures all works are executed to the highest industry standards. These measures guarantee precision, compliance, and durability in every project we deliver.

We invest heavily in workforce capability, from training apprentices to meeting and exceeding industry standards, to maintaining multiple experienced supervisors who oversee every stage of fabrication—both in the workshop and during on-site installation. This comprehensive supervision framework safeguards quality, safety, and schedule performance throughout the entire project lifecycle.



FACILITIES

Wulguru Group operates three major workshop facilities, with a combined undercover area exceeding 22,000 square metres, strategically located across two sites in Townsville, North Queensland and one in Brisbane, Queensland.

Each workshop is fully equipped with overhead cranes and an extensive range of specialised fabrication and engineering equipment which allows us to maintain full operational control, quality assurance, and schedule integrity across all stages of a project delivery.

Collectively, our facilities have the capacity to produce over 10,000 labour hours per week, enabling us to manage high-volume production and complex fabrication projects with efficiency and precision.

Stuart, Townsville

- 8,500m² of dedicated heavy fabrication space
- 10 overhead cranes with 9 metres under hook clearance
Lifting capacity of up to 40 tonnes
- Ability to handle oversized structural components and specialised industrial fabrications

Redbank, Brisbane

- 1,800m² heavy engineering workshop located within Brisbane's western corridor
- Overhead cranes with 10t lifting capacity

Blast and Paint Facility

- Complimenting our fabrication capacity is a 2,000m², modern and environmentally compliant blast and paint facility, designed to meet stringent quality, durability, and environmental standards.
- The facility supports both small and large-scale projects, ensuring in-house control over surface treatment and coatings to extend the lifecycle of our fabricated products

South Yards, Townsville

- 10-road wagon maintenance facility
- Rail wheel refurbishment workshop
- Dedicated locomotive maintenance facility
- Fully integrated rail-specific paint and blast complex



This infrastructure investment reflects The Wulguru Group's long-term commitment to supporting Australia's heavy industry, mining, defence, and rail sectors with best-in-class facilities, technical capability, and local manufacturing excellence.



PROJECT MANAGEMENT

The Wulguru Group's project management function is led by a team of highly qualified and experienced professionals, who possess a proven track record in the successful delivery of complex, large-scale projects across sectors including infrastructure, mining, defence, energy, and industrial fabrication.

We adopt an integrated project delivery model, taking full responsibility for the coordination of all project activities—from design and engineering through to fabrication, procurement, installation, and commissioning. This single-point accountability ensures streamlined communication, reduced risk, and enhanced overall project performance.

Our clients benefit from a dedicated point of contact who manages all aspects of the engagement, ensuring consistency, transparency, and alignment with project objectives.

With a strong foundation in planning, technical execution, and stakeholder collaboration, The Wulguru Group is positioned to deliver complex projects to the highest standard—on time and within budget.



Abraham Steel & Pipe Fabrications



Abraham Steel is a piping, fabrication and maintenance business specialising in providing services to the fuel industry.



- Over 40 years' experience delivering mechanical, fabrication, and maintenance services to Australia's oil, gas, and petrochemical sectors.
- Scalable capabilities from routine maintenance to major mechanical projects, with a focus on safety, quality, and timely delivery.
- Proven expertise in complex regulatory and safety standards, consistently achieving an "A" safety rating with ISNetworld.
- Trusted by major clients including Viva Energy, BP, Caltex, and Puma Energy for critical infrastructure support.
- Pressure piping fabrication to client and industry specifications.
- Pressure vessel manufacture and repair to relevant standards.
- Tank construction, upgrades, and maintenance.
- Ship bunkering and marine mechanical services.
- Fuel handling and general shipping infrastructure support.

Wulguru Rail



Specialising in the maintenance, refurbishment, and manufacture of above-rail rolling stock, delivering high-quality services to the rail industry with a focus on reliability, safety, and performance.



- Townsville-based facility with 15,000m² of workshop space, including paint, blast, and wheel machining, plus private rail siding for end-to-end rolling stock service.
- Fully accredited Rolling Stock Operator under Rail Safety National Law, with a certified Rail Safety Management System ensuring top-tier safety and compliance.
- Bogie, wagon and wagon component maintenance, repairs, refurbishment, and manufacturing.
- Wheelset and bearing reconditioning.
- Grit blasting and high-performance specialise painting.
- Air component overhauls.
- Planned, unplanned and emergency maintenance—on-site or off-site with emergency response services.

Wulguru Wheel



Focusing on providing high-quality, precision-engineered components that are essential for the safe and efficient operation of rail systems.



- Established in 2018 to complement Wulguru Rail with specialised wheel, axle, and bearing services for rolling stock nationwide.
- Delivers end-to-end machining, fitting, and maintenance solutions to rail operators, manufacturers, and service providers.
- Equipped with advanced, purpose-built machining and fitting technology for precise rail industry tolerances.
- Skilled team of technicians, fitters, and machinists with deep rail component expertise.
- Strong focus on quality, safety, and on-time delivery.
- Industry-leading turnaround times without compromising workmanship.

Archimedes Engineering



Designing and manufacturing product handling solutions.

- Established in 1975, delivering reliable material handling equipment across Australia and international markets including PNG, Vietnam, Indonesia, and the Middle East.
- Specialists in designing and manufacturing screw conveyors, bucket elevators, hoppers, bins, racking, platforms, and structural components.
- Custom solutions engineered for durability and efficiency in demanding environments.
- End-to-end project delivery from design and fabrication to installation, commissioning, and maintenance.
- Conducts operational reviews to improve production and plant performance.
- Servicing diverse industries including minerals, cement, grain, sugar, and meat processing.
- In-house manufactured screw conveyors and handling systems built to the highest standards for long-term performance.

REV Cranes



**We Pride Ourselves
on, our Ability to Do
the Difficult Lifts.**

- Established in 2001 in Townsville, specialising in Franna and small mobile crane services.
- Dry hire specialists, backed by skilled and experienced operators.
- Experts in dual lifts, complex rail asset relocations, and moving large infrastructure in tight or challenging spaces.
- A versatile fleet of modern, well-maintained cranes suited to a wide range of projects.
- A strong commitment to safety, reliability, and performance across every job.
- Flexible and responsive service, tailored to meet the most complex lifting challenges.

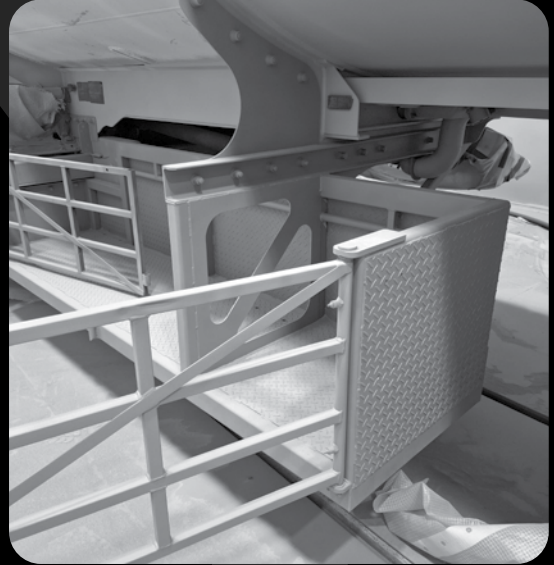
Wulguru Steel

Supplying equipment and services for general engineering and fabrication.



- We specialise in the design, fabrication, and installation of structural mechanical and piping and specialised components using carbon steel, stainless steel, aluminium, and sheet metal.
- Established in 1976, servicing meat processing, mining, sugar, government, and industrial sectors.
- Delivering projects from minor repairs to complex, multi-million-dollar developments.
- Specialists in heavy structural steel, plate work, stainless steel, tanks, pressure vessels, and mineral processing equipment.
- Full project solutions including design, CAD, layout planning, construction, operations, and project management.
- Onsite installation and transport logistics supported by an in-house fleet of semi-trailers and flat-bed trucks.

Wulguru Paint & Blast



**Pushing boundaries
with technology,
setting standards
in quality.**

- Trusted provider of high-quality blasting and coating services, operating as part of the Wulguru Group
- Serving diverse industries including mining, structural steel, sugar milling, heavy machinery, transport, and government infrastructure
- Specialists in complete surface preparation and protective coating solutions for:
 - Structural steel
 - Mining components
 - Machinery parts
 - Sugar mill equipment
 - Tanks and truck trailers
 - Other industrial assets
- Experienced team combining technical expertise with a commitment to excellence, capable of handling projects of all sizes and complexity
- Tailored blasting and coating solutions designed to meet the unique requirements of each client
- Skilled professionals experienced with a wide range of protective coatings and paint systems, ensuring durability and performance in harsh environments
- State-of-the-art enclosed blast shed enabling year-round operation, strict quality control, and adherence to environmental standards
- Backed by the integrated capabilities of the Wulguru Group, including project management, transport, and fabrication for seamless end-to-end solutions

Wulguru Group Head Office

Address

17 Doyle Court,
Stuart Qld 4811

Postal

PO Box 2144,
Wulguru Qld 4811

Phone

07 4721 7400

Email

info@wulguru.com

Website

www.wulguru.com

Wulguru Steel

Address

17 Doyle Court,
Stuart Qld 4811

Phone

07 4721 7400

Email

sales@wulguru.com

Wulguru Rail

Address

41 Morey Street,
South Townsville Qld 4814

Phone

07 4430 6668

Email

sales@wulguru.com

Wulguru Wheel Shop

Address

41 Morey Street,
South Townsville Qld 4814

Phone

07 4430 6668

Email

sales@wulguru.com

Abraham Steel & Pipe Fabrication

Address

17 Doyle Court,
Stuart Qld 4811

Phone

07 4772 1936

Email

sales@abrahamsteel.com.au

Archimedes Engineering

Address

430 Brisbane Tce,
Redbank Qld 4301

Phone

07 3818 6966

Email

sales@archimedes.net.au

Rev Cranes

Address

3 Saunders Street

Phone

07 4430 6610

Email

info@revcranes.com.au

Wulguru Blast & Paint

Address

17 Doyle Court,
Stuart Qld 4811

Phone

07 4721 7400

Email

sales@wulguru.com

