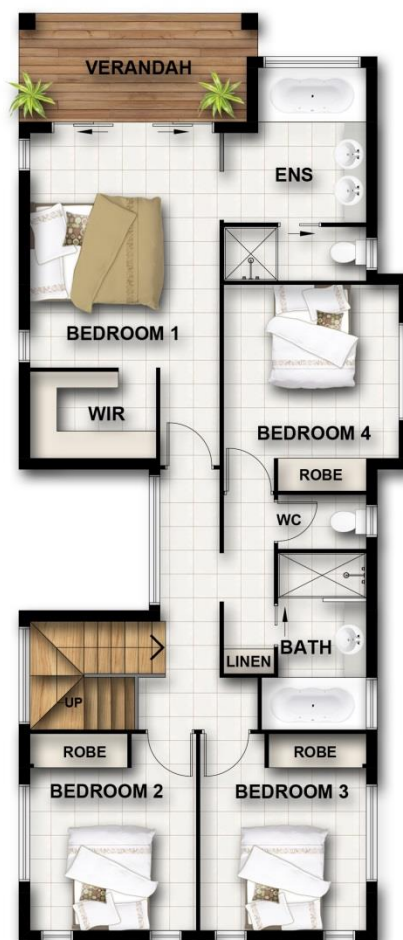


# Macquarie 280



|                     |                            |
|---------------------|----------------------------|
| <b>Ground Floor</b> |                            |
| Living area         | 101.79m <sup>2</sup>       |
| Garage area         | 39.36m <sup>2</sup>        |
| Patio area          | 23.68m <sup>2</sup>        |
| Entry area          | 5.34m <sup>2</sup>         |
| <b>First Floor</b>  |                            |
| Verandah area       | 8.56m <sup>2</sup>         |
| Living area         | 101.74m <sup>2</sup>       |
| <b>Total area</b>   | <b>280.47m<sup>2</sup></b> |

### Cougar Packages Include:

- Masonry block walls with smooth coat texture finish
- Blockwork Garage internal walls
- Colorbond roof, gutters and fascia with blanket insulation to entire roof area
- Quality floor coverings throughout, including tiled patio and porch
- Professionally designed kitchen with stone benchtops and soft close cabinetry
- Stainless steel kitchen appliances
- Generous LED lighting and power point allowance
- Architectural plumbing fixtures throughout
- Exposed aggregate driveway allowance
- Council and statutory fees

Cougar Homes Pty Ltd  
 QBSA No. 1033596  
[www.cougarhomes.com.au](http://www.cougarhomes.com.au)