



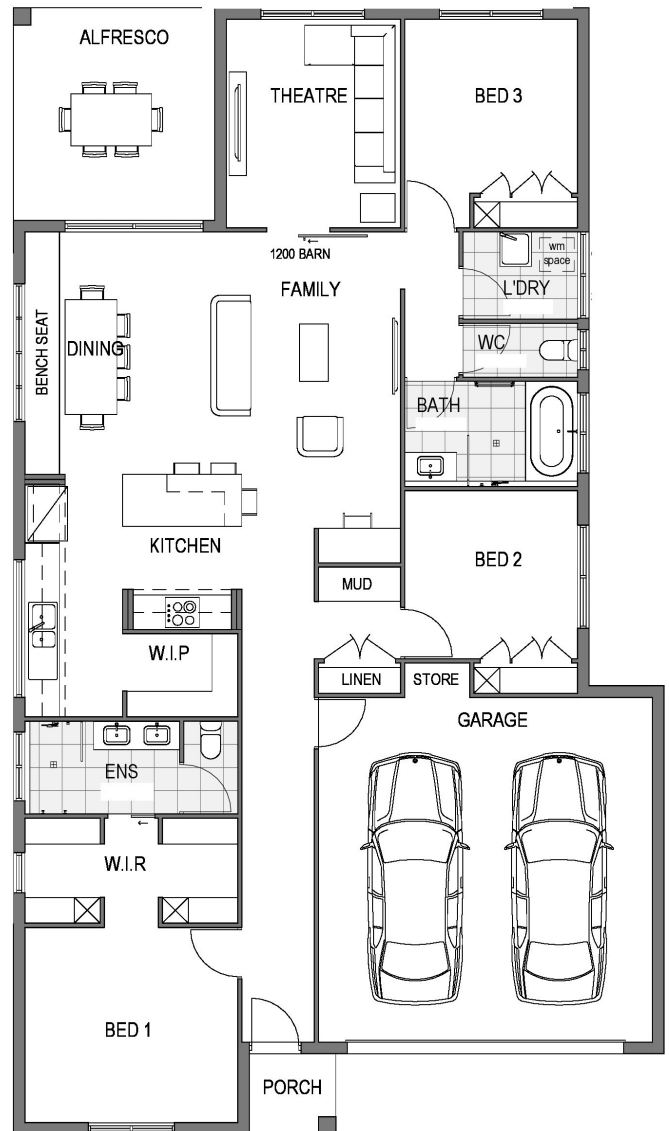
Stradbroke 198

3 2 2 2 1

The Stradbroke 197 is for those who want something special.

Features:

- Our most loved Kitchen layout from our Boathouse display home (on display at North Shore)
- Beautiful open plan living, made even larger with the Theatre/second Lounge opening up to the main living via a large optional barn door
- Optional bench seat in the dining room provides Byron Bay vibes + masses of storage
- Study, Mud and Garage Store
- Luxurious Master Suite



You will *love coming home* to the Stradbroke.

©This plan is copyright and cannot be copied in whole or in part without the written consent of Case Constructions Pty Ltd. Some items shown are not included standard.

michaelcase
H O M E S