



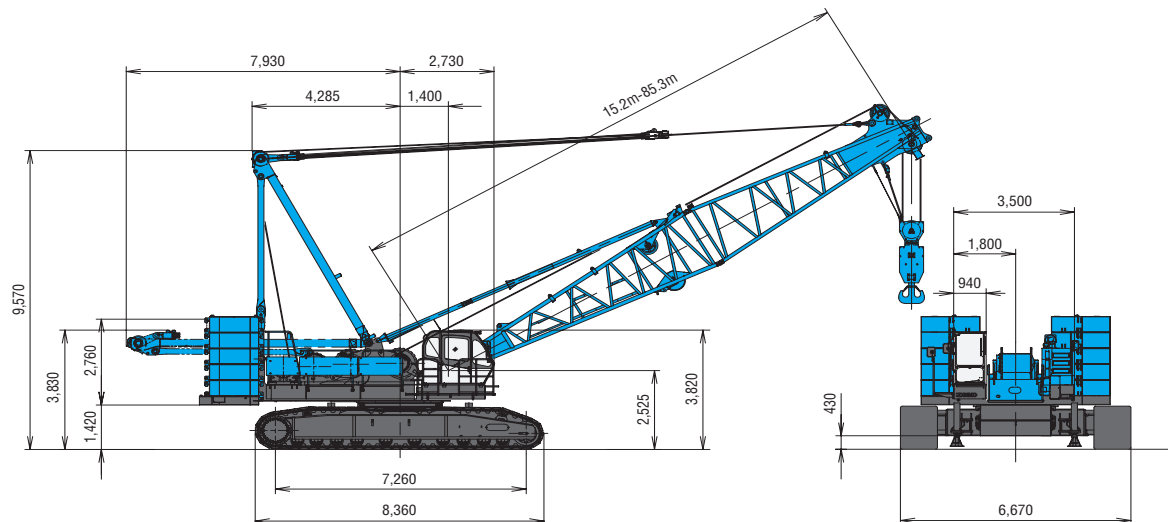
'Kobelco 180T Crawler Crane'

Kobelco CKE1800-1F150Te Hydraulic Crawler Crane

Heavy Duty Crane Boom	
Max. Lifting Capacity	180 t/3.75 m
Max. Length	42.7 m
Crane Boom	
Max. Lifting Capacity	160 t/4.4 m
Max. Length	85.3 m
Luffing Boom	
Max. Lifting Capacity	110 t/5.2 m
Max. Length	54.9 m
Long Boom	
Max. Lifting Capacity	40.1 t/12.0 m
Max. Length	85.3 m
Fixed Jib	
Max. Lifting Capacity	26.8 t/15.2 m
Max. Length	30.5 m
Max. Combination	73.2 m + 30.5 m
Luffing Jib	
Max. Lifting Capacity	48.6 t/9.14 m
Jib Length	21.3 m ~ 51.8 m
Max. Combination	54.9 m + 51.8 m
Luffing Angle	60° ~ 88°
Working Speed	
Swing Speed	2.6 min ⁻¹ {rpm}
Travel Speed	1.1/0.7 km/h

Power Plant	
Model	Hino P11C-UN
Engine Output	247 kW/2,000 min ⁻¹ {rpm}
Fuel Tank Capacity	400 liters
Main & Aux. Winch	
Max. Line Speed	100 m/min (1st layer)
Rated Line Pull	132 kN {13.5 tf}
Wire Rope Diameter	25.4 mm
Wire Rope Length	430 m (Main) 335 m (Aux.)
Brake Type	Spring set hydraulically released (Negative)
Free Fall Brake	Wet-type multiple disc brake (Optional)
Hydraulic System	
Pumps	4 variable displacement
Max. Pressure	31.9 MPa {325 kgf/cm ² }
Hydraulic Tank Capacity	550 liters
Self Erection Device	
Weight	Standard
Operating Weight*	Approx. 164 t
Ground Pressure*	103 kPa {1.06 kgf/cm ² }
Counterweight	60.0 t (Upper), 20.0 t (Lower)
Transportation Weight**	Approx. 44.0 t

* Including upper and lower machine, 60.0 ton counterweight, 20.0 ton carbody weight, basic boom, hook, and other accessories.
 ** Base machine with boom base, trans-lifter, main and aux. winches (non-freefall) including wire rope, self removal device.
 Units are SI units. { } indicates conventional units.



T +61 7 4724 2200
 F +61 7 4724 2208

11-15 Sandspit Drive South Townsville
 PO Box 1155 Townsville QLD 4810 Australia

info@pacificmarinegroup.com.au
 www.pacificmarinegroup.com.au

Crane Boom Lifting Capacity

Unit: metric ton

Counterweight: 60.0 t, Carbody weight: 20.0 t

Working radius (m)	Boom Length (m)	12.2*	15.2	18.3	21.3	24.4	27.4	30.5	33.5	36.6	39.6	42.7	45.7	48.8	51.8	Boom Length (m)	Working radius (m)
3.0	3.75m / 180.0																3.0
4.0	171.5	4.4m / 160.0	4.9m / 144.2														4.0
5.0	140.5	141.6	141.6	5.4m / 131.4	5.9m / 121.3												5.0
6.0	119.1	119.3	119.3	119.3	119.3	6.4m / 112.0	6.9m / 103.9										6.0
7.0	102.0	102.7	102.7	102.7	102.7	102.7	102.5	7.4m / 97.1	7.9m / 90.6								7.0
8.0	88.1	89.5	89.5	89.5	89.5	89.5	89.5	89.5	89.5	8.4m / 80.3	8.9m / 76.8						8.0
9.0	76.8	79.0	79.0	79.0	79.0	79.0	79.0	79.0	79.0	78.4	76.3	9.4m / 70.6					9.0
10.0	67.7	71.5	71.5	71.5	71.5	71.5	71.5	71.5	71.5	70.2	68.4	66.6	10.0m / 65.4	10.5m / 60.7			10.0
12.0	51.4	58.8	58.7	58.6	58.5	58.4	58.3	58.2	58.2	57.8	56.5	55.1	54.0	52.8			12.0
14.0	12.4m / 50.0	47.2	47.7	47.6	47.4	47.3	47.2	47.0	47.0	46.9	46.7	46.5	46.0	45.0			14.0
16.0		14.8m / 41.9	40.2	40.1	39.9	39.8	39.6	39.4	39.4	39.3	39.1	38.9	38.8	38.6			16.0
18.0			17.5m / 35.9	34.4	34.2	34.1	34.0	33.7	33.7	33.6	33.3	33.2	33.1	32.9			18.0
20.0				30.1	29.8	29.6	29.5	29.3	29.2	29.1	28.9	28.7	28.6	28.4			20.0
22.0				20.1m / 29.9	26.5	26.3	26.2	25.9	25.8	25.7	25.5	25.3	25.3	25.0			22.0
24.0					22.7m / 25.4	23.6	23.4	23.2	23.0	22.9	22.7	22.5	22.4	22.2			24.0
26.0						25.4m / 22.0	21.1	20.9	20.7	20.6	20.4	20.2	20.1	19.9			26.0
28.0							28.0m / 19.2	19.0	18.8	18.7	18.5	18.3	18.2	18.0			28.0
30.0								17.4	17.2	17.1	16.9	16.7	16.6	16.4			30.0
32.0								30.7m / 16.9	15.8	15.7	15.4	15.2	15.1	14.9			32.0
34.0									33.3m / 15.0	14.4	14.2	14.0	13.9	13.6			34.0
36.0										35.9m / 13.4	13.1	13.0	12.8	12.6			36.0
38.0											12.2	12.1	11.8	11.7			38.0
40.0											38.6m / 12.0	11.1	11.0	10.7			40.0
42.0												41.2m / 10.7	10.3	10.0			42.0
44.0													43.8m / 9.7	9.4			44.0
46.0														8.7			46.0
48.0															46.5m / 8.6		48.0
Reeves	14	12	12	10	10	9	8	8	7	6	6	6	5	5			Reeves

* Values of 12.2 m boom length are lifting capacities for heavy duty crane boom.

Working radius (m)	Boom Length (m)	54.9	57.9	61.0	64.0	67.1	70.1	73.2	76.2	79.2	82.3	85.3	Boom Length (m)	Working radius (m)
10.0	11.0m / 56.4	11.5m / 52.4												10.0
12.0	51.5	50.5	12.0m / 48.3	12.5m / 44.7	13.0m / 41.2	13.5m / 38.0								12.0
14.0	43.9	43.2	42.3	41.5	40.1	37.5	14.0m / 34.5	14.5m / 31.8	15.0m / 29.0	15.5m / 25.9				14.0
16.0	38.1	37.5	36.7	36.1	35.3	34.8	32.2	30.1	27.9	25.3	16.1m / 21.0			16.0
18.0	32.7	32.7	32.3	31.8	31.1	30.7	29.8	27.8	25.9	22.9	19.0			18.0
20.0	28.3	28.2	28.0	27.9	27.7	27.3	26.7	25.8	23.9	20.9	17.2			20.0
22.0	24.9	24.8	24.6	24.5	24.4	24.2	24.0	23.6	22.0	19.1	15.6			22.0
24.0	22.1	22.0	21.9	21.7	21.6	21.4	21.4	21.3	20.3	17.5	14.2			24.0
26.0	19.7	19.7	19.4	19.4	19.2	19.0	19.0	18.9	18.7	16.0	13.0			26.0
28.0	17.8	17.7	17.5	17.5	17.3	17.1	17.0	17.0	16.8	14.7	11.8			28.0
30.0	16.2	16.1	15.9	15.8	15.6	15.5	15.4	15.3	15.2	13.5	10.8			30.0
32.0	14.7	14.6	14.4	14.3	14.2	14.0	13.9	13.8	13.7	12.4	9.9			32.0
34.0	13.5	13.4	13.2	13.1	12.9	12.8	12.7	12.6	12.4	11.4	9.0			34.0
36.0	12.4	12.3	12.1	12.0	11.9	11.7	11.6	11.5	11.3	10.4	8.2			36.0
38.0	11.4	11.3	11.2	11.1	10.9	10.8	10.7	10.5	10.3	9.6	7.4			38.0
40.0	10.6	10.4	10.2	10.2	10.0	9.8	9.7	9.6	9.4	8.7	6.7			40.0
42.0	9.9	9.7	9.5	9.4	9.3	9.1	9.0	8.9	8.7	8.0	6.0			42.0
44.0	9.2	9.0	8.9	8.8	8.5	8.4	8.3	8.2	8.0	7.3	5.4			44.0
46.0	8.5	8.4	8.2	8.1	7.9	7.7	7.6	7.5	7.4	6.6	4.8			46.0
48.0	8.0	7.9	7.6	7.6	7.4	7.2	7.1	7.0	6.8	6.0	4.2			48.0
50.0	49.1m / 7.7	7.4	7.1	7.0	6.9	6.7	6.6	6.5	6.3	5.4	3.7			50.0
52.0		51.8m / 6.9	6.7	6.6	6.4	6.2	6.0	5.9	5.8	4.8	3.2			52.0
54.0			6.2	6.2	6.0	5.7	5.6	5.5	5.3	4.3	2.7			54.0
56.0			54.4m / 6.1	5.8	5.5	5.3	5.2	5.0	4.8	3.8	2.2			56.0
58.0				57.0m / 5.5	5.1	4.9	4.7	4.6	4.4	3.3	1.8			58.0
60.0					59.7m / 4.8	4.5	4.4	4.2	4.0	2.8	59.0m / 1.6			60.0
62.0						4.2	4.0	3.9	3.7	2.4				62.0
64.0						62.3m / 4.1	3.7	3.6	3.3	1.9				64.0
66.0							65.0m / 3.5	3.2	2.9	65.0m / 1.7				66.0
68.0								67.6m / 3.0	2.4					68.0
70.0									70.0m / 2.0					70.0
reeves	5	4	4	4	4	3	3	3	3	2	2			reeves

Note: Ratings according to EN13000.

Ratings shown in are determined by the strength of the boom or other structural components.

Refer to notes P12.