

75m² Office Suite - Overlooking Park

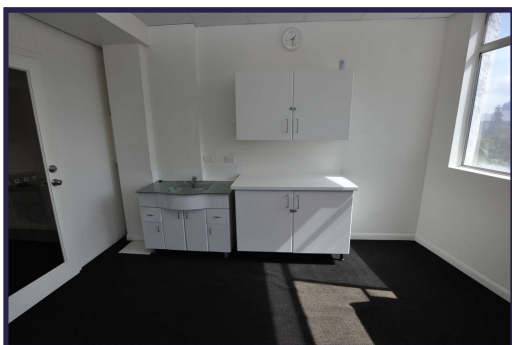
Only \$1495/month* (including outgoings)



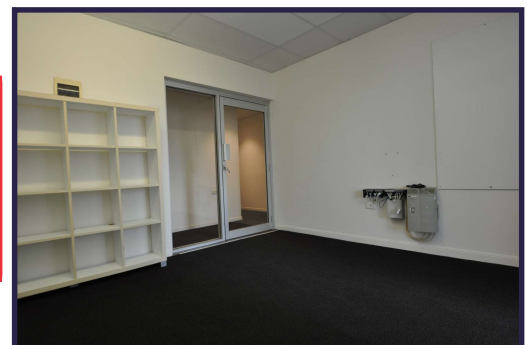
**Directly Adjoining
Major
Public Carpark**

**Level 3, 3 Alison Street
Surfers Paradise**

- Well presented office suite in a central location
- Extensive window facade and natural light with views to the hinterland
- **Close to light rail** and easy parking for clients and staff



**Connected
to
NBN**



* Plus GST

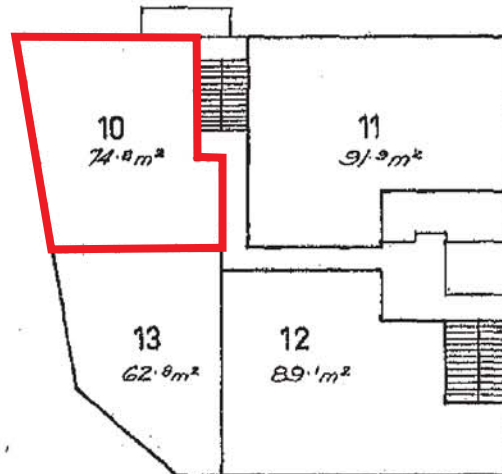


view more at www.wrapropertyservices.com
For enquiries, professional & confidential service
Phone Wayne Robbie on
(07) 5592 3180 or 0419 772 867



BUILDING UNITS PLAN No. 1072

LEVEL E



Units 10, 11, 12 & 13
Commercial purposes only.



Scale 1:250 (Metric)

Floor Areas are approximate only.

TOSTEE CONSTRUCTION COY. PTY. LTD.
by its duly constituted Attorney
JOHN WILLIAM McDONALD in the
presence of:

Dr Campbell Schuter

SIGNATURE OF REGISTERED PROPRIETOR.

TOSTEE CONSTRUCTION COY. PTY. LTD.
by its duly constituted Attorney

John W. McDonald

Deborah
~~SECRETARY~~ TOWN CLERK.

GOLD COAST CITY COUNCIL.