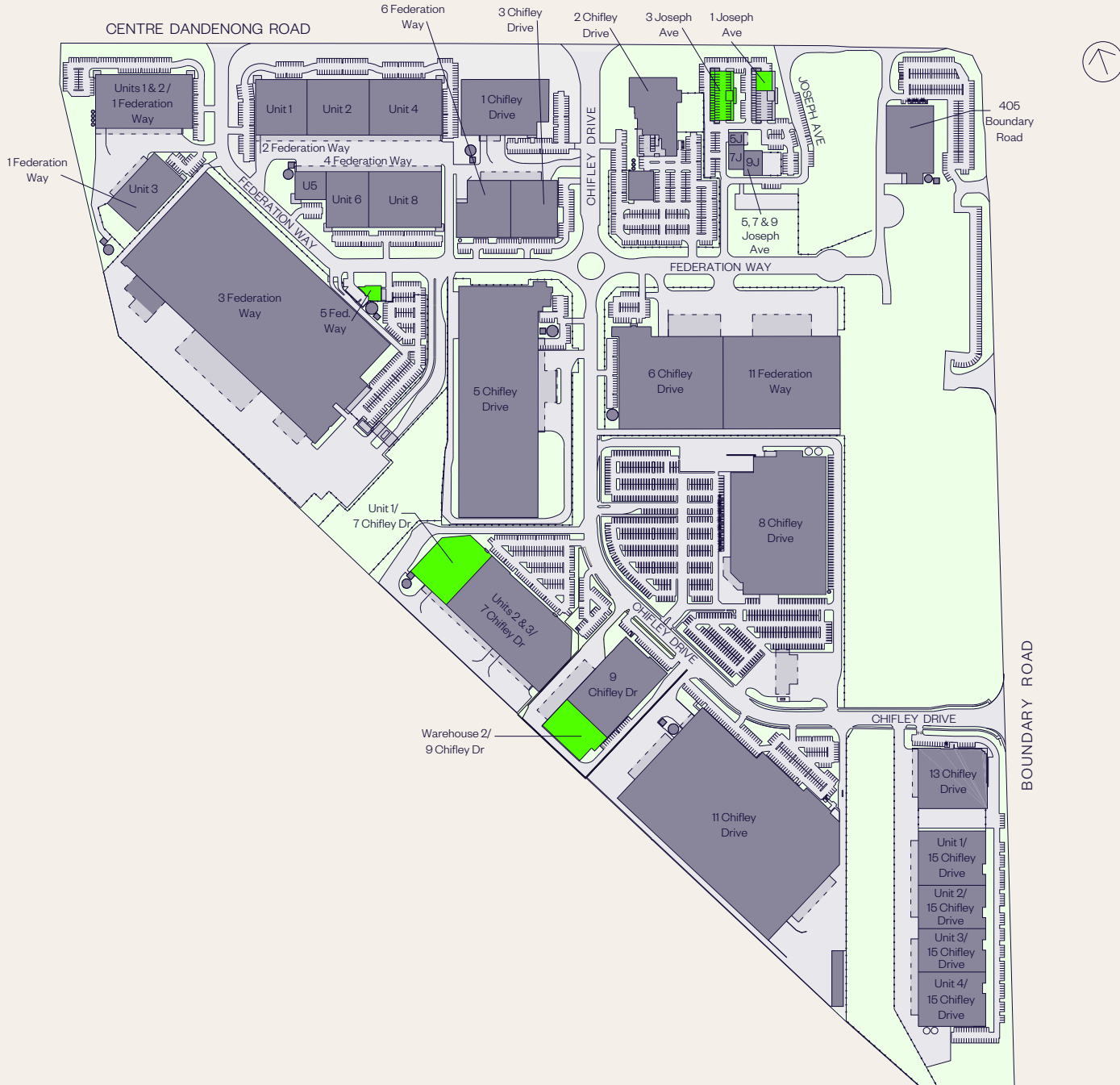


# ESTATE PLAN

## Chifley Business Park

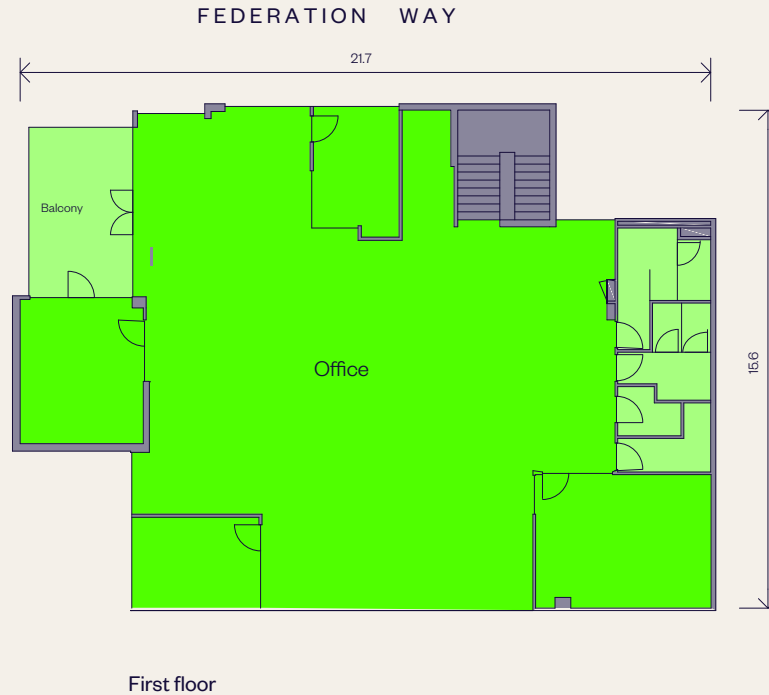
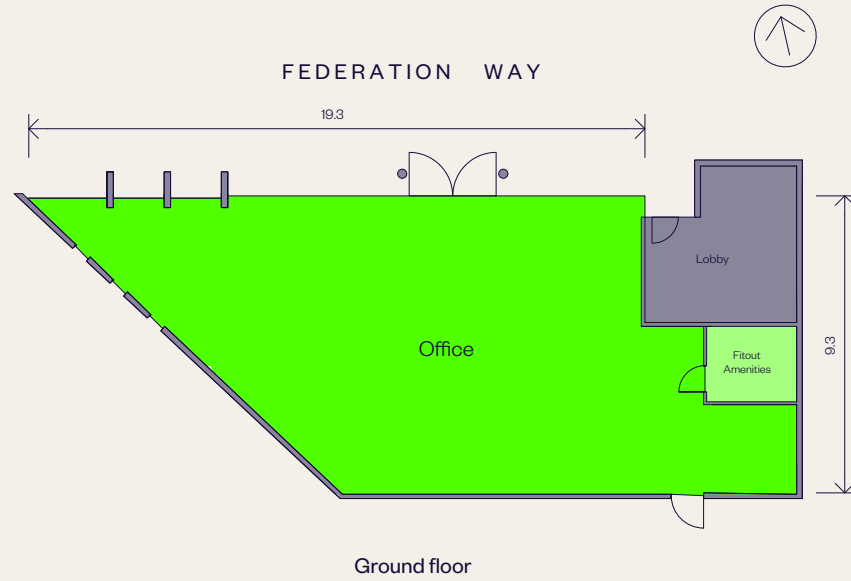


AVAILABLE

# 5A FEDERATION WAY PLAN

Chifley Business Park  
5 Federation Way

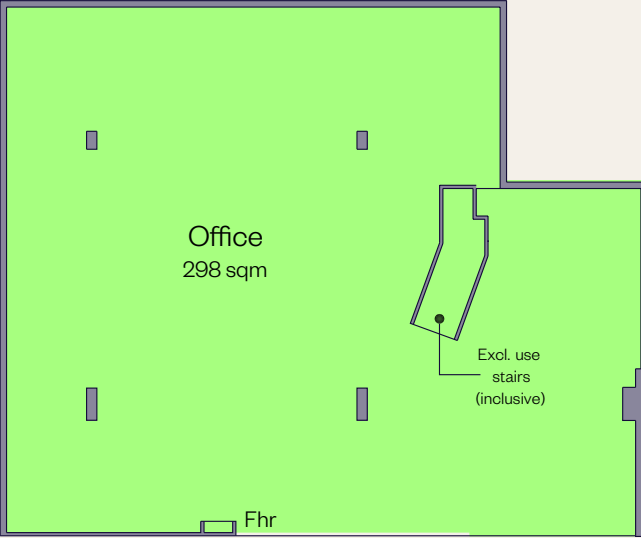
AREA SCHEDULE	SQM
Ground floor	
Office	151.9
Amenities	7.2
First floor	
Office	247.9
Amenities	22.9
Balcony	17.4
<b>Total building area</b>	<b>447.3</b>
Lobby	17.5



# SUITE 1.04 PLAN

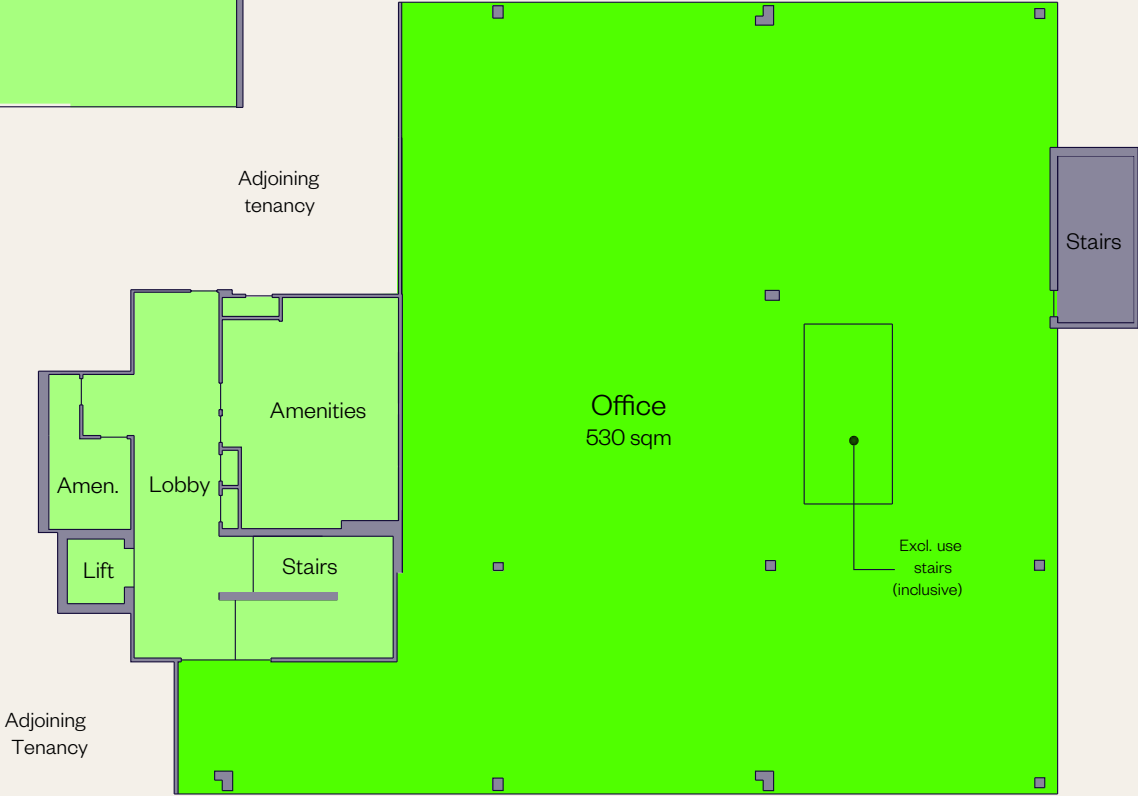
Chifley Business Park  
1 Joseph Avenue

AREA SCHEDULE	SQM
Suite 1.04	
Ground level office	298
Level 1 office	530
<b>Total building area</b>	<b>828</b>



Ground level

Adjoining tenancy

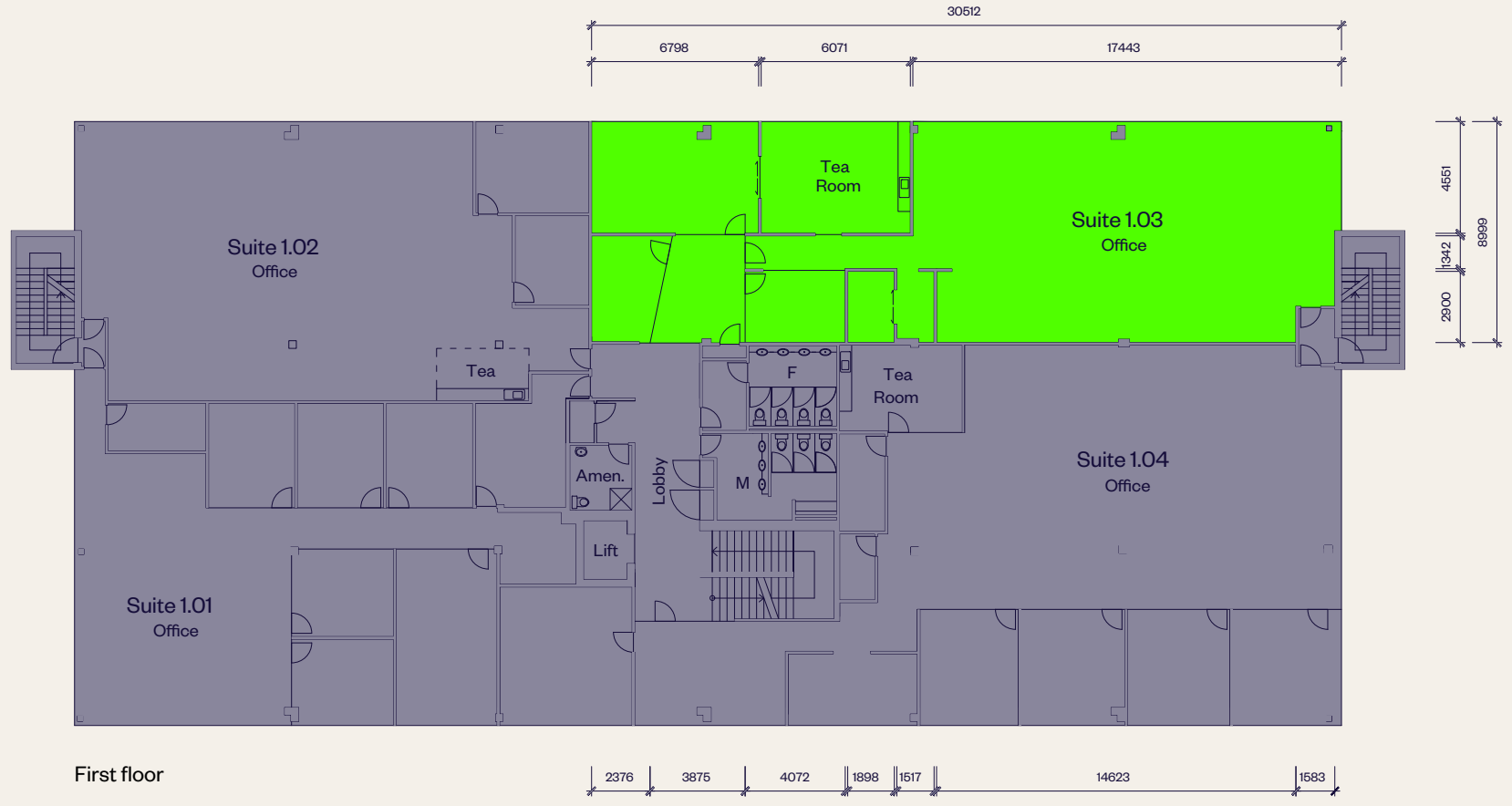


Level 1

# LEVEL 1, SUITE 1.03 PLAN

Chifley Business Park  
3 Joseph Avenue

AREA SCHEDULE	SQM
Office	244
Tea room	29
<b>Total building area</b>	<b>273</b>



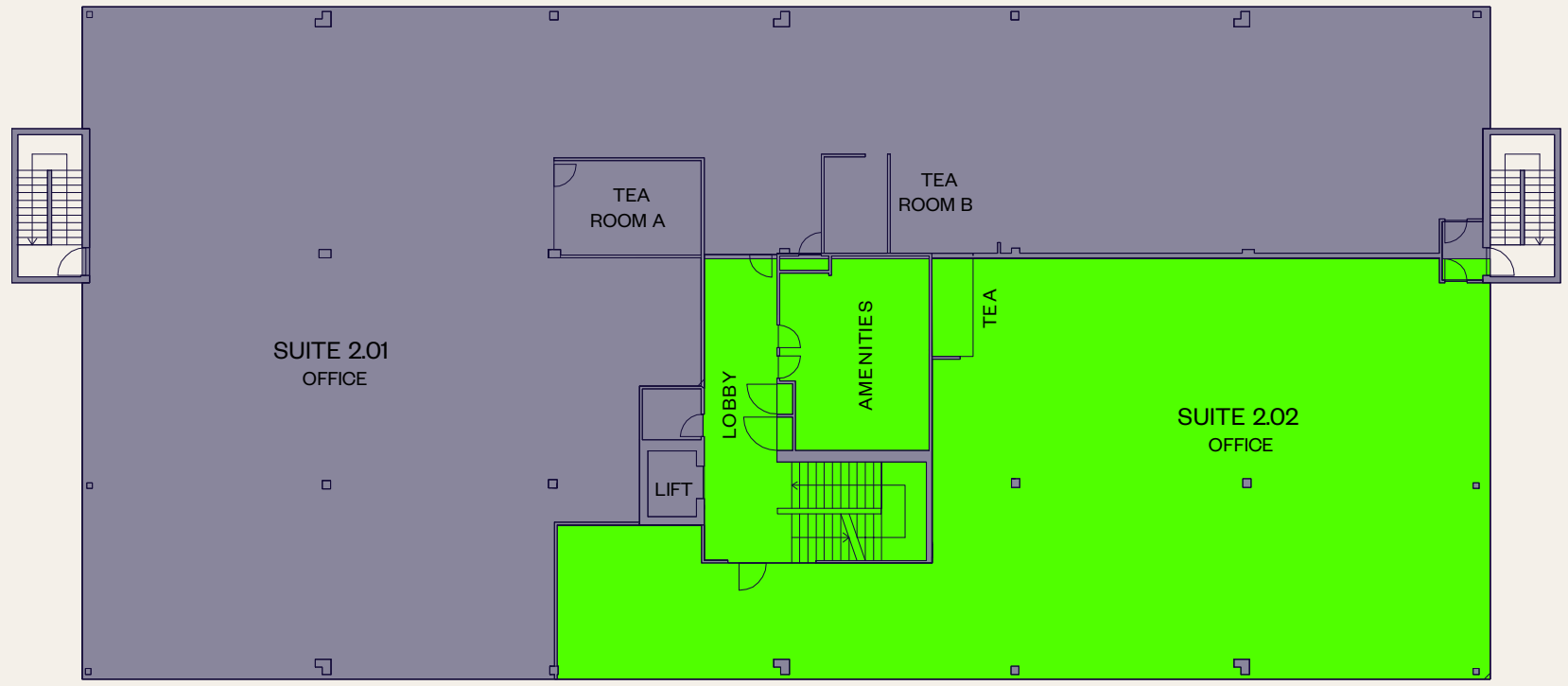
First floor



# LEVEL 2, SUITE 2.02 PLAN

Chifley Business Park  
3 Joseph Avenue

AREA SCHEDULE	SQM
Office	378
<b>Total building area</b>	<b>378</b>



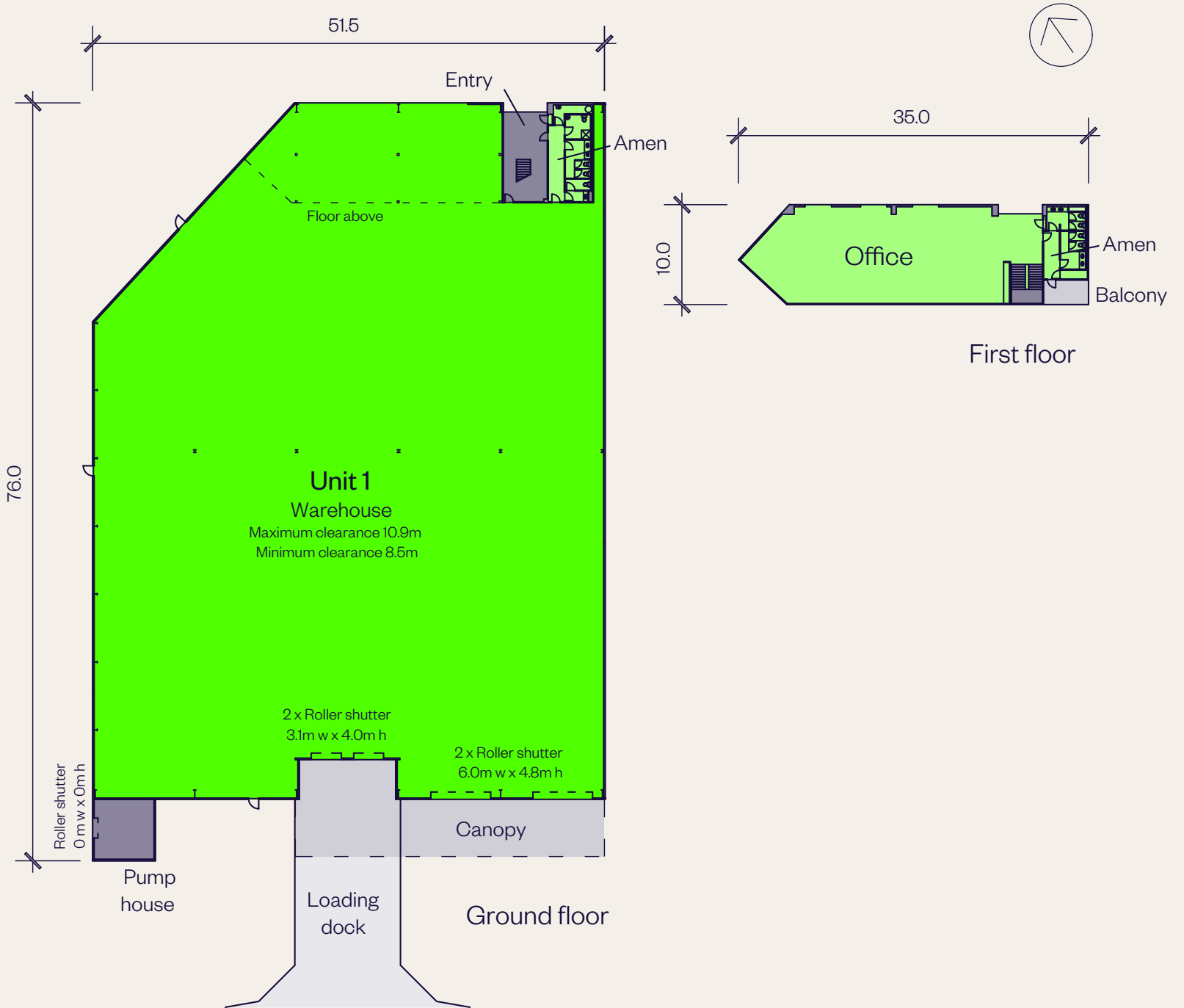
SECOND FLOOR



# UNIT 1 PLAN

Chifley Business Park  
7 Chifley Drive

AREA SCHEDULE	SQM
<b>Ground floor</b>	
Warehouse	3,246.4
Entry	39.9
Amenities	46.7
Pump house	39.8
<b>First floor</b>	
Office	277.5
Amenities	35.0
<b>Total building area</b>	<b>3,685</b>
Balcony	11.4
Canopy	216.2



# WAREHOUSE 2 PLAN

Chifley Business Park  
9 Chifley Drive

AREA SCHEDULE	SQM
Ground floor	
Warehouse	2,245.6
<b>Total building area</b>	<b>2,245.6</b>

