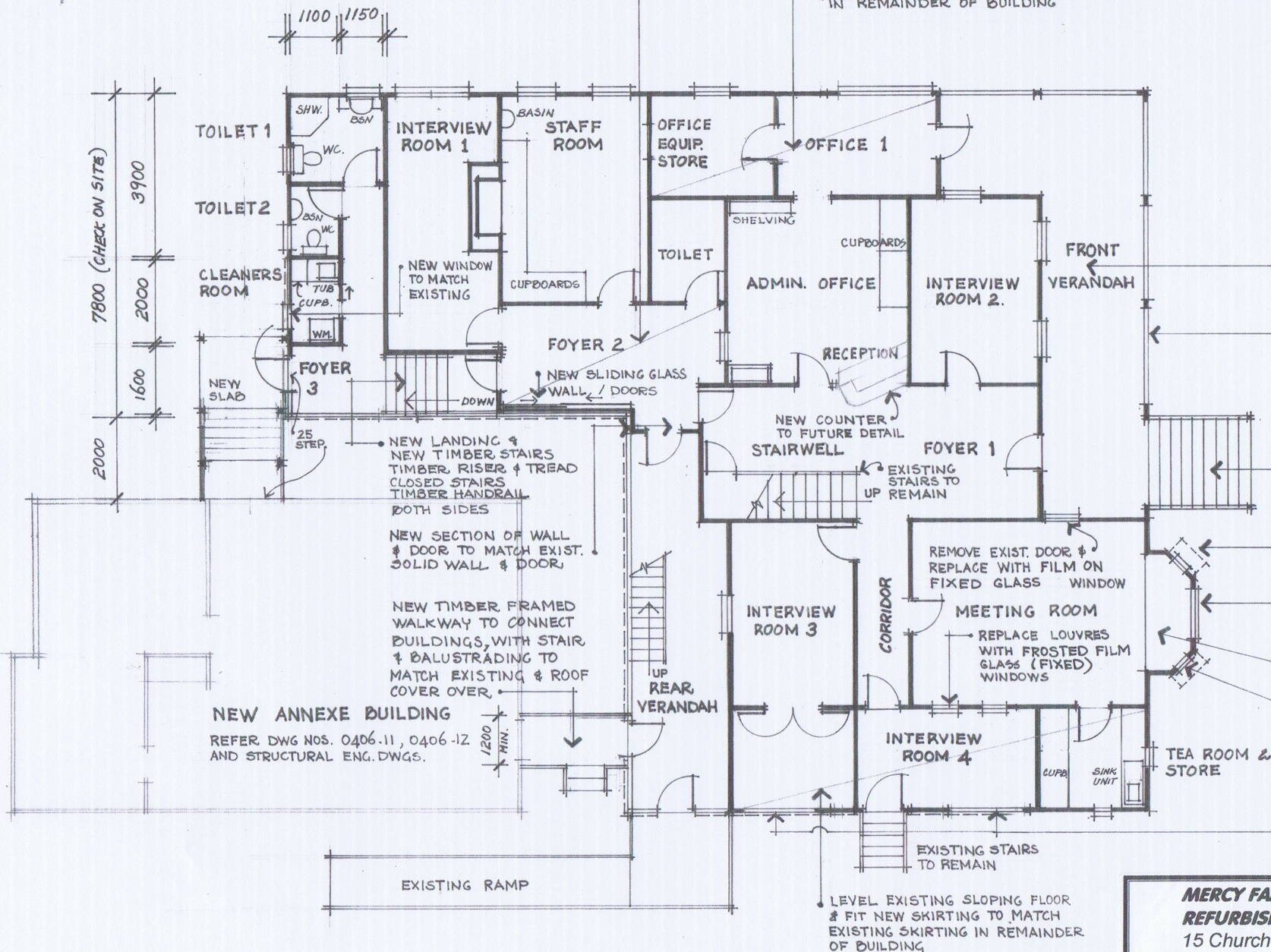


FRAME UP NEW FLAT CEILING &
LINE WITH FLUSH CEILING
TO FOYER 2

LEVEL EXISTING SLOPING FLOOR
& FIT NEW SKIRTING TO MATCH EXISTING
IN REMAINDER OF BUILDING

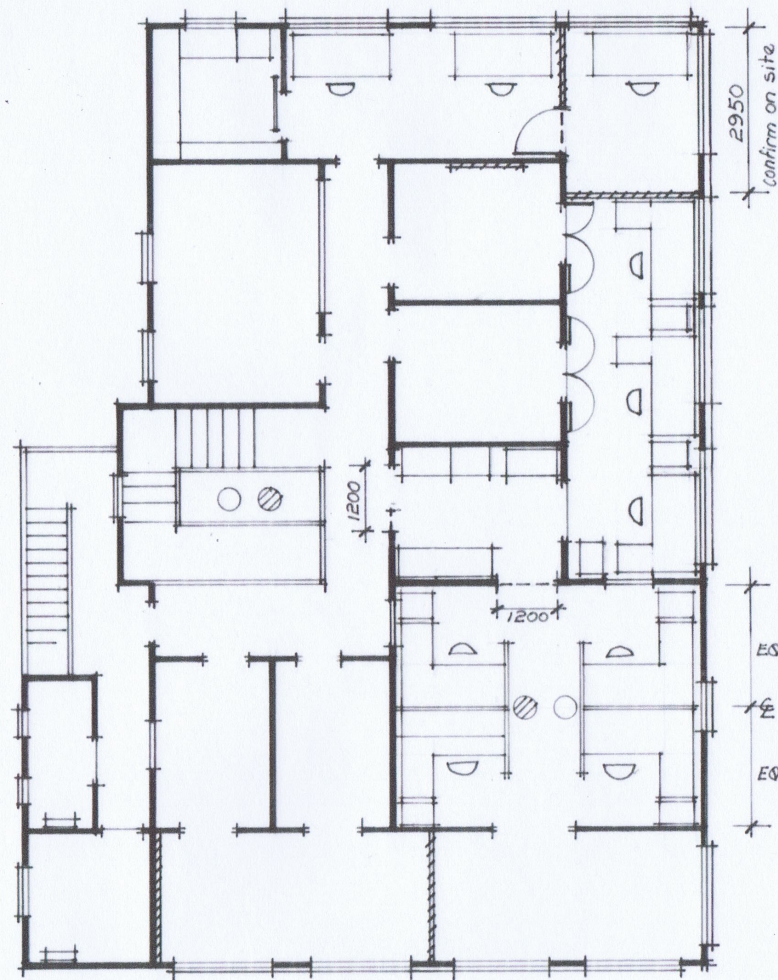
NOTES

- REMOVE ALL WALL MOUNTED AIR-CONDITIONING UNITS AND MAKE GOOD TO ALL SURFACES
- RE-FIT BOTH TOILET AND TOILET COMPLETELY WITH NEW FIXTURES AND FITTINGS AND TILES
- REFER TO SCHEDULE OF WORK FOR ALTERATIONS GENERALLY, INCLUDING FINISHES, DOOR, WINDOW & PARTITION CHANGES, & DRAW NO. 0406-
- PROVIDE ANY NECESSARY REPAIRS TO EXISTING WINDOWS TO REMAIN, TO ENSURE ALL WINDOWS ARE IN FULL WORKING ORDER
- REPLACE DECKING TO FRONT VERANDAH, FINISH BOARDS WITH APPROVED STAIN.
- BALUSTRADING & POSTS TO REMAIN REPAIR AS NECESSARY
- REMOVE EXISTING STAIRS, REPLACE WITH TIMBER FRAMED & TREAD STAIRS BALUSTRADING TO MATCH VERANDAH, STAIN TREADS, PAINT REMAINDER.
- REMOVE EXISTING ALUMINIUM AWNINGS AND MAKE GOOD
- INSTALL NEW DOUBLE HUNG WINDOW TO MATCH EXISTING, WIDTH 900, SILL AND HEAD HEIGHT TO MATCH ADJACENT WINDOWS, WIDTH AS PER UPPER WINDOW
- REMOVE RAISED PLATFORM AND MAKE GOOD TO FLOOR LEVEL WITH EXISTING
- REMOVE EXISTING LOUVRES ON BOTH SIDES AND INSTALL NEW TIMBER DOUBLE-HUNG WINDOWS
- REMOVE EXISTING LOUVRES AND INSTALL NEW WINDOWS AS PER SCHEDULE AND AS INDICATED ON ELEVATIONS



MERCY FAMILY SERVICES CENTRE BUILDING
REFURBISHMENT OF OFFICES AT
15 Church Street Goodna

Proposed Ground Floor Plan
Scale: 1:100 Dwg No. 0406-5, September 2004
PURE SPACE **0412 421 635**



MERCY FAMILY SERVICES

Upper Level Refurbishment

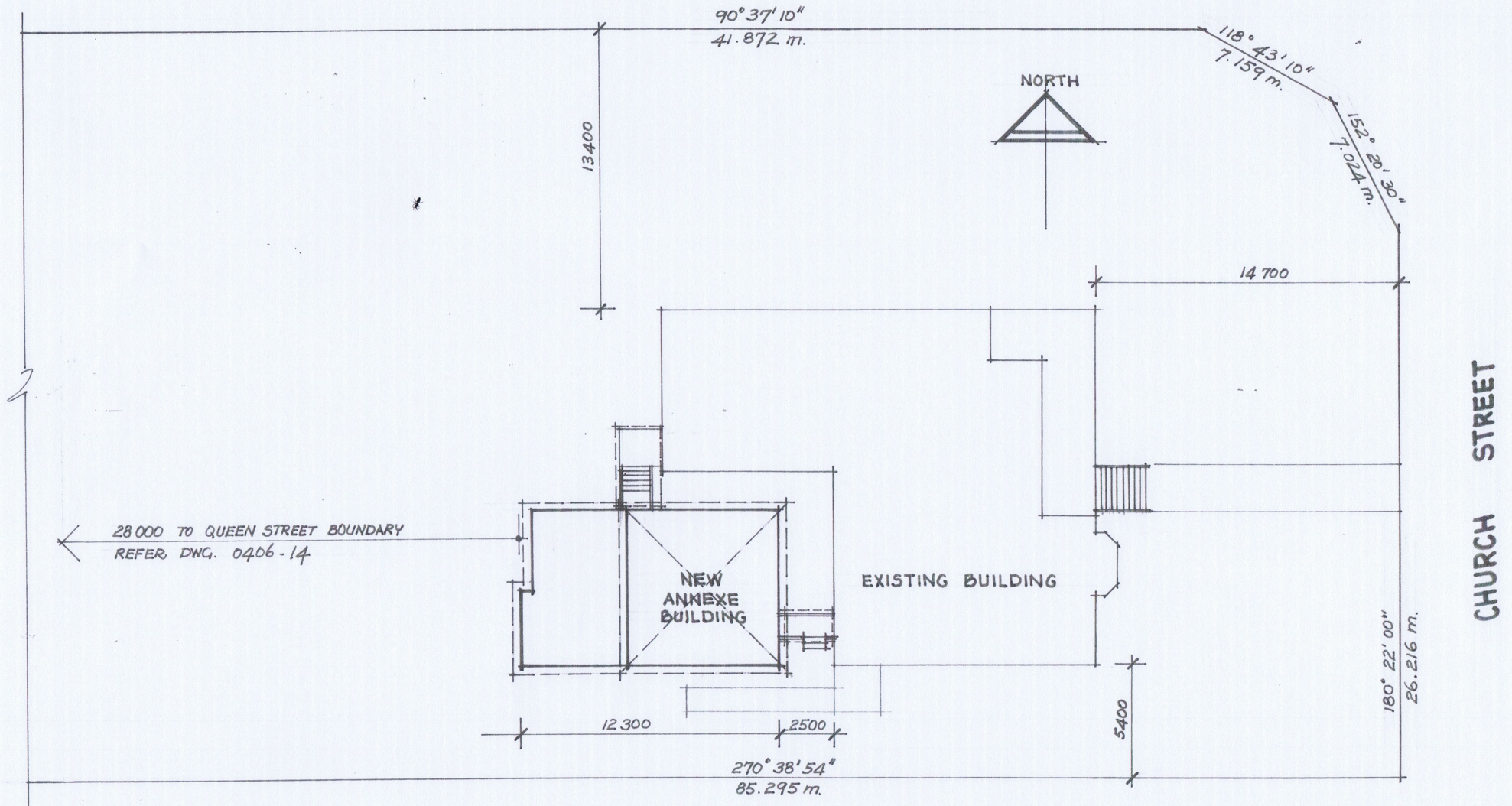
15 Church Street Goodna

Proposed Floor Plan

Scale: 1:100 @A3 Drawing No.1209 -3 August 2012

PURE SPACE

0412 421 635



SITE PLAN

**MERCY FAMILY SERVICES CENTRE BUILDING
REFURBISHMENT OF OFFICES AT**
15 Church Street Goodna

Site Plan

Scale: 1:200 Dwg No. 0406-13 July 2005

PURE SPACE

0412 421 635