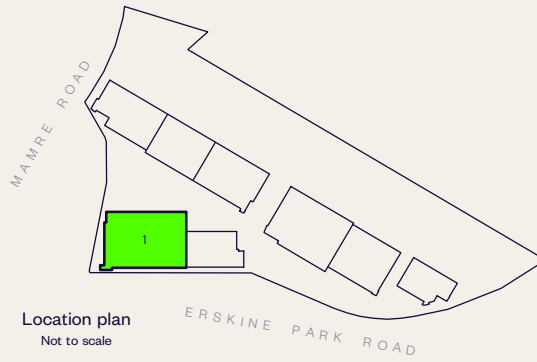


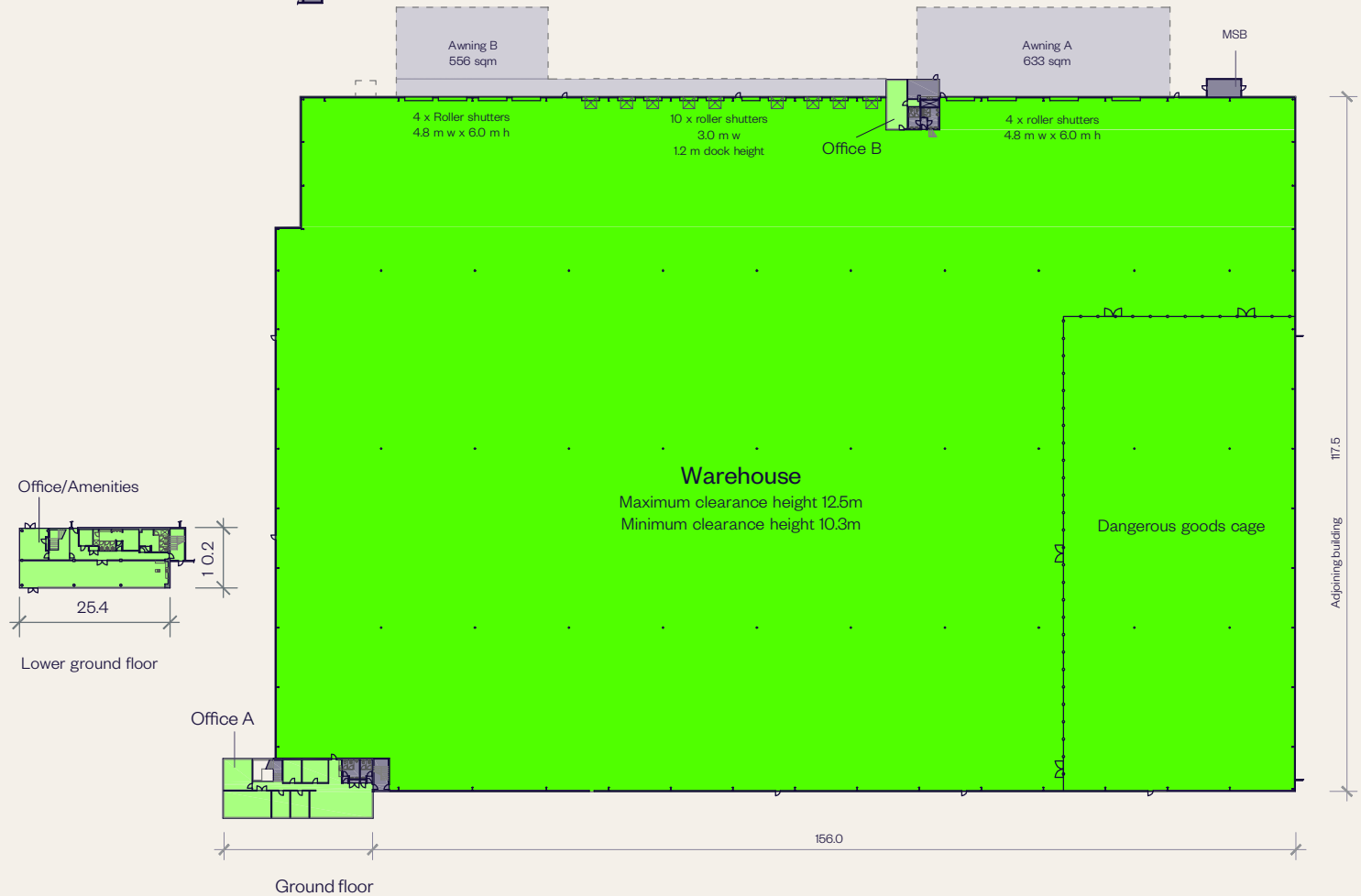
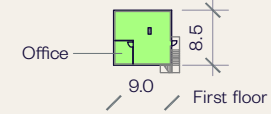
BUILDING B1 PLAN

Westpark Industrial Estate

AREA SCHEDULE	SQM
Lower ground	
Office	273
Pump room	10
Ground floor	
Warehouse	16,894
DG Cage	3,149
Office A	264
Office B	76
MSB Room	19
First floor	
Office	85
Carpark spaces	101
Total building area	20,770



Pump room
(Located below
driveway)



■ FOR LEASE