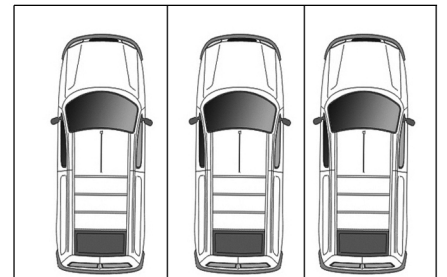
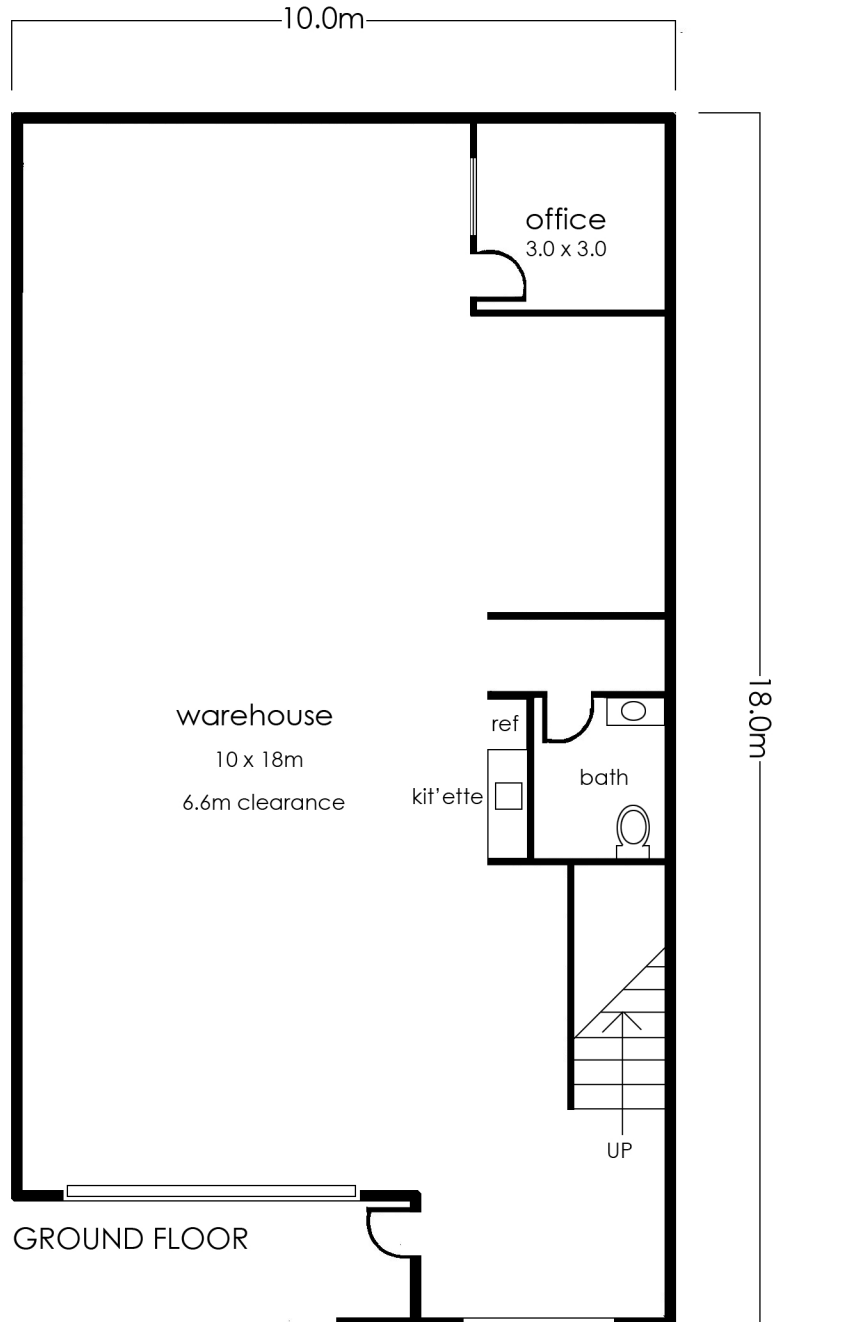
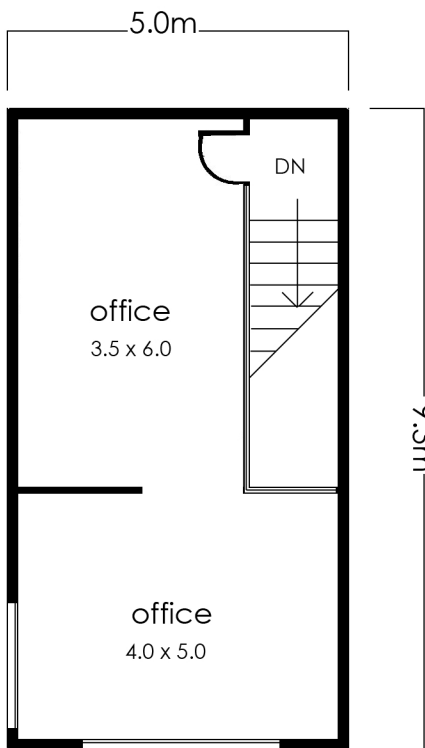


Ground floor area
approx: 179sqm

First floor area
approx: 46sqm

Total area
approx: 225sqm



3x parking spaces

2/7 Corporate Boulevard, Bayswater

The floor plan is provided for general information and illustrative purposes only. All measurements, dimensions, and layouts are approximate and may vary from the actual property. While every effort has been made to ensure accuracy, no responsibility is taken for any error, omission, or misstatement. Prospective buyers should not rely solely on the floor plan and are encouraged to conduct their own inspections and verify all details independently. The design and content of this floor plan remain the property of DND Floor Plans. ©