

Prime Corporate Location - Surfers Paradise

FOR LEASE - 81m²*



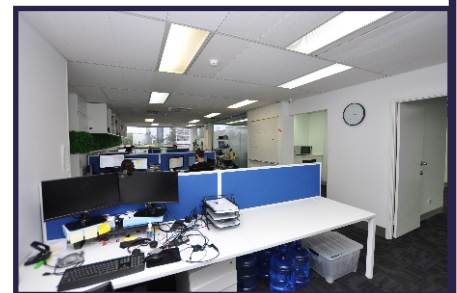
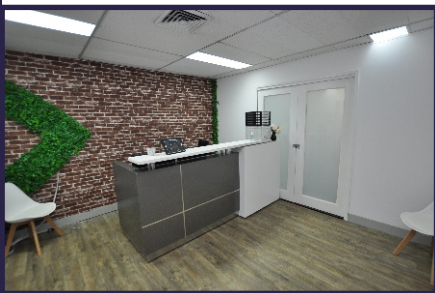
**Directly Opposite
Major Car Park**

**Close To
Light Rail**

Level 2 / 46 Cavill Avenue

- A superb location in the heart of the corporate sector and central to all facilities.
- Modern open plan office suite ideal for secure tenant.

**Flexible Term
Available**



**Gross Rent Only \$2500 / month + gst
(includes outgoings)**



view more at www.wrapropertyservices.com
for enquiries, professional & confidential service
Phone Wayne Robbie on
(07) 5592 3180 or 0419 772 867

* approximately

