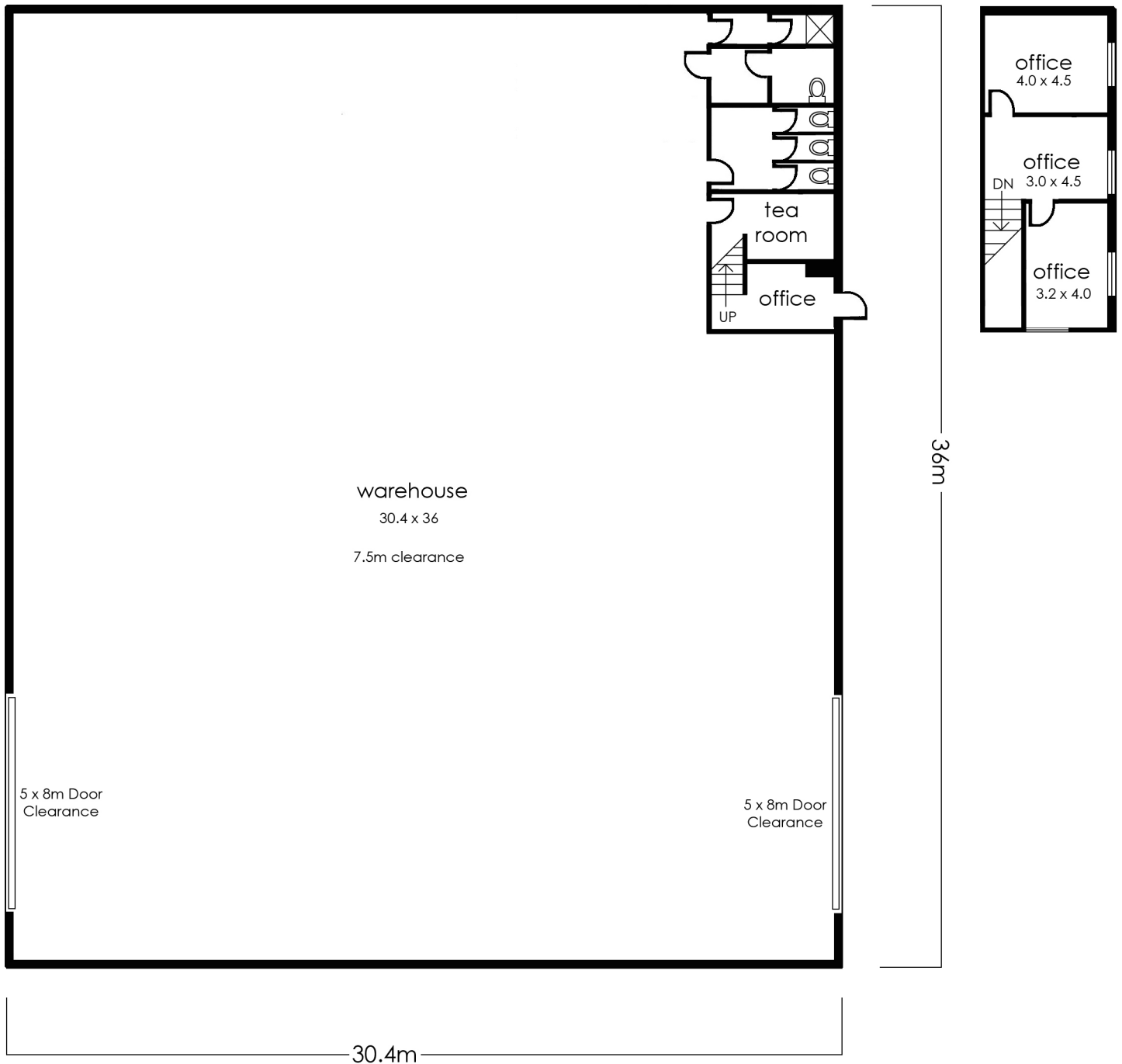
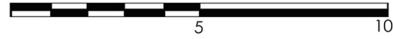


Warehouse area
approx: 1094sqm

First floor office area
approx: 49.5 sqm

Total area
approx: 1143.5sqm



7/26 Longstaff Road, Bayswater

The floor plan is provided for general information and illustrative purposes only. All measurements, dimensions, and layouts are approximate and may vary from the actual property. While every effort has been made to ensure accuracy, no responsibility is taken for any error, omission, or misstatement. Prospective buyers should not rely solely on the floor plan and are encouraged to conduct their own inspections and verify all details independently. The design and content of this floor plan remain the property of DND Floor Plans. ©