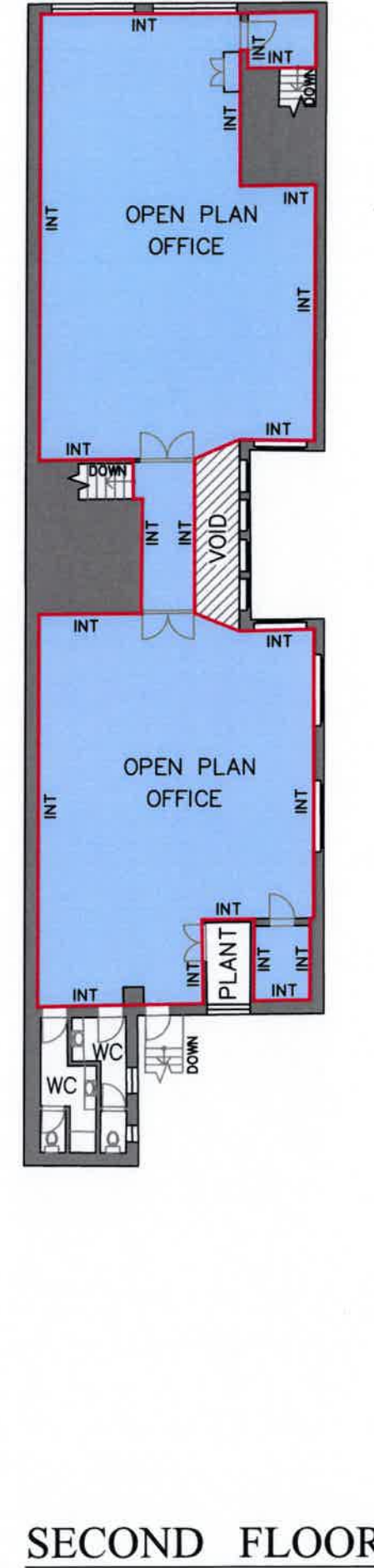
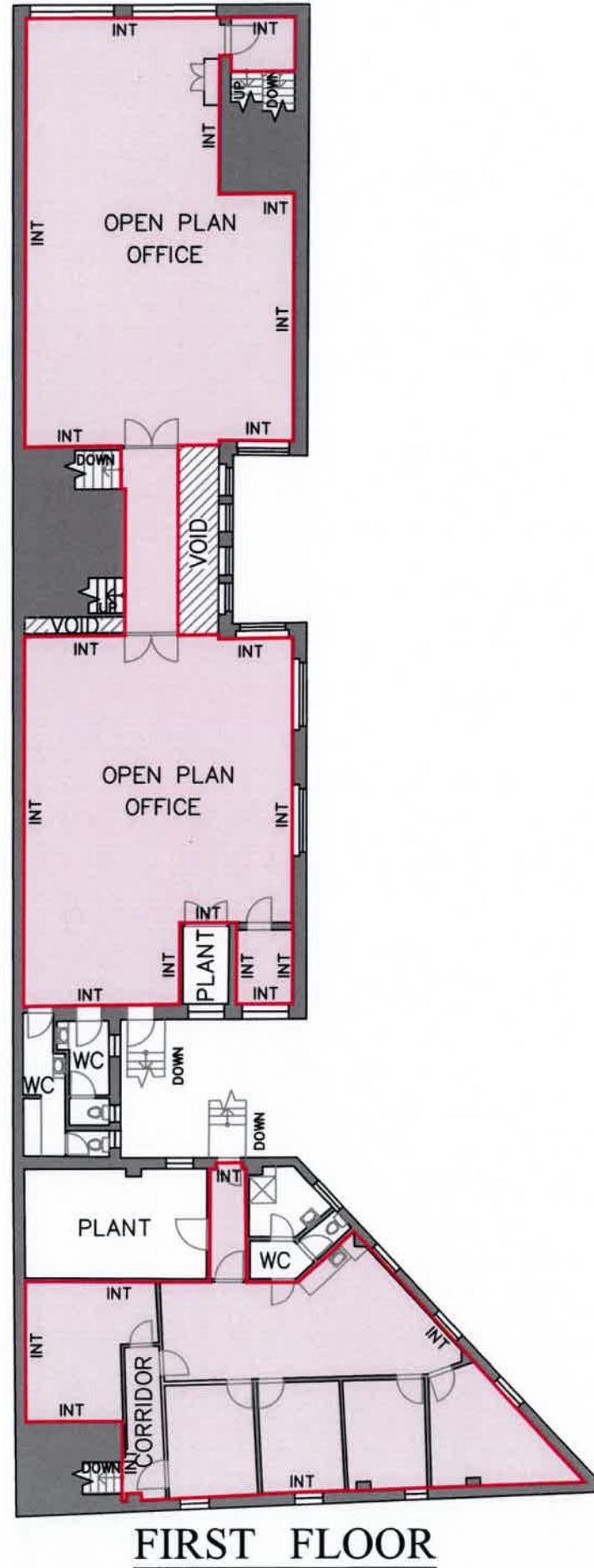
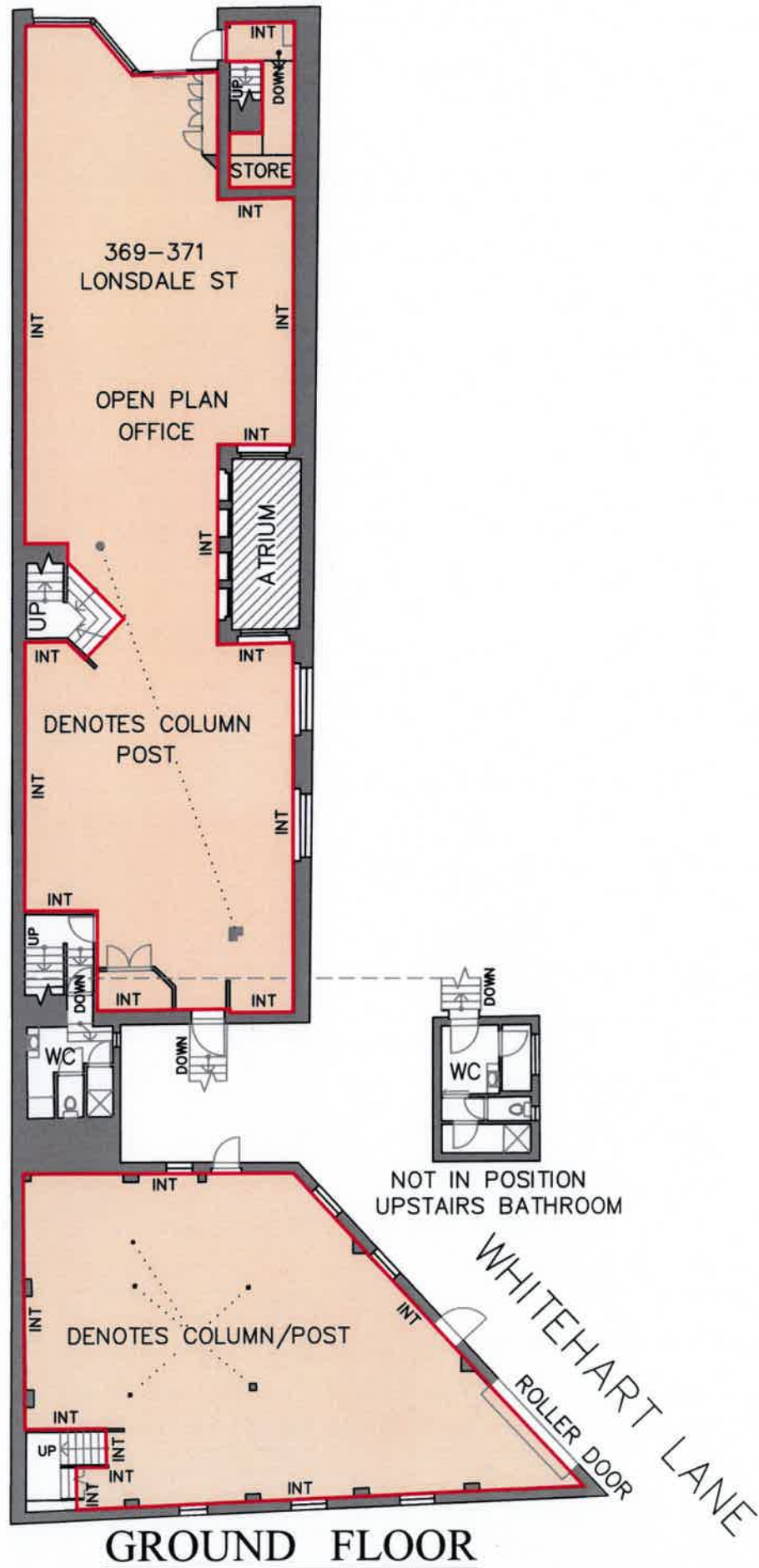


LONSDALE STREET



NOTATIONS

Whilst every effort has been made to determine lettable areas in accordance with the Property Council of Australia 'Method of Measurement' guidelines Pinpoint Plans Pty Ltd will not be held responsible for features hidden, obscured or under construction at the time of survey.

METHOD OF MEASUREMENT
Areas have been calculated in accordance with the Property Council of Australia (PCA) Method of Measurement for Lettable Area (1997).

GUIDELINES USED -
Net Lettable Area (NLA)

Legend:
INT - Internal face of wall
GL - Glass line

NET LETTABLE AREA (NLA)

GROUND FLOOR	385m ²
FIRST FLOOR	333m ²
SECOND FLOOR	240m ²
TOTAL	958m²

369-371 LONSDALE STREET
MELBOURNE 3000

DRAWING NAME
LETTABLE AREA PLAN

ORIGINAL SHEET SIZE
A3

SHEET No.
1 of 1

SCALE 1:201
0 2.01 4.02 6.03 8.04 10.0
LENGTHS ARE IN METRES