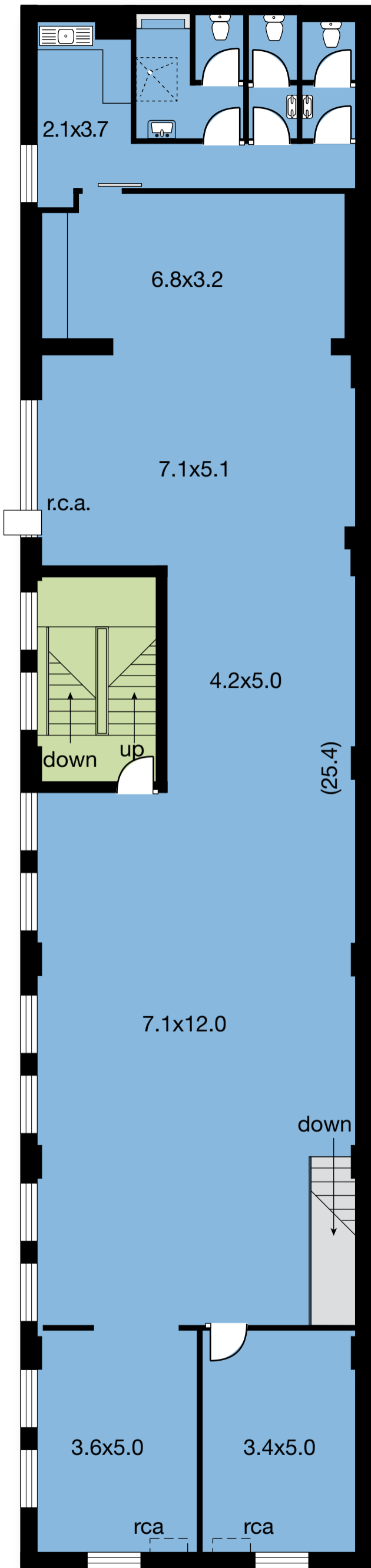
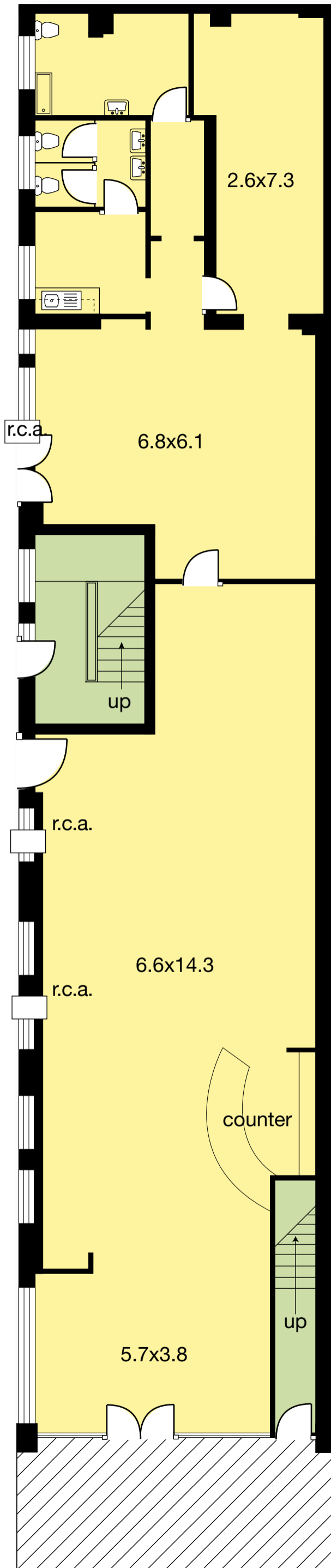


First Floor



Pulteney Street

Ground Floor



Pulteney Street

303 Pulteney Street, Adelaide

ESTIMATED NETT LETTABLE AREA

Ground Floor	214.5 sq. metres
First Floor	230.2 sq. metres
Common Areas	35.1 sq. metres

Total Nett L.A. 479.8 sq. metres

Complies with the PCA Method of Measurement

