

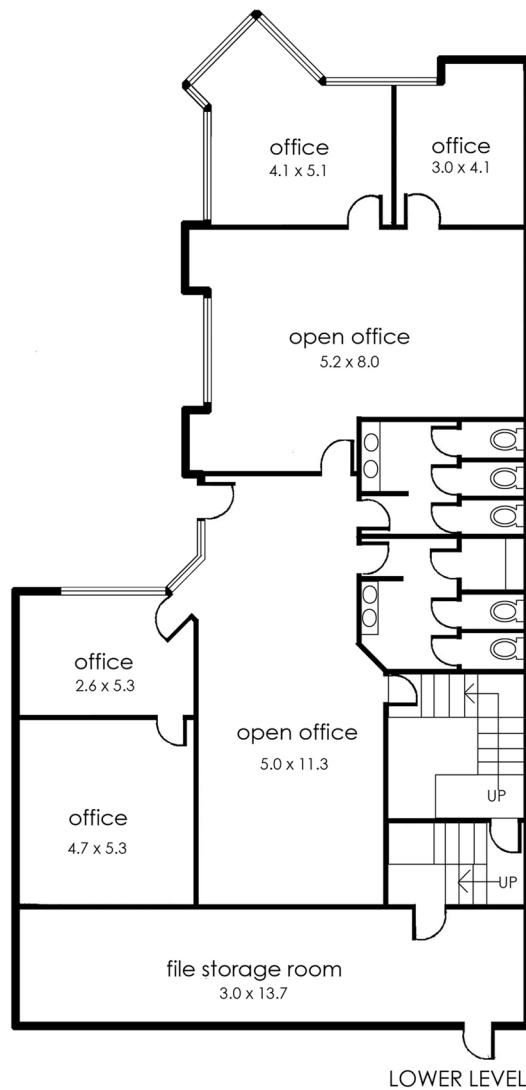
MARKET STREET

ENTRY

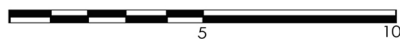
Parking

OFFICE  
BUILDING

MAIN STREET



LOWER LEVEL

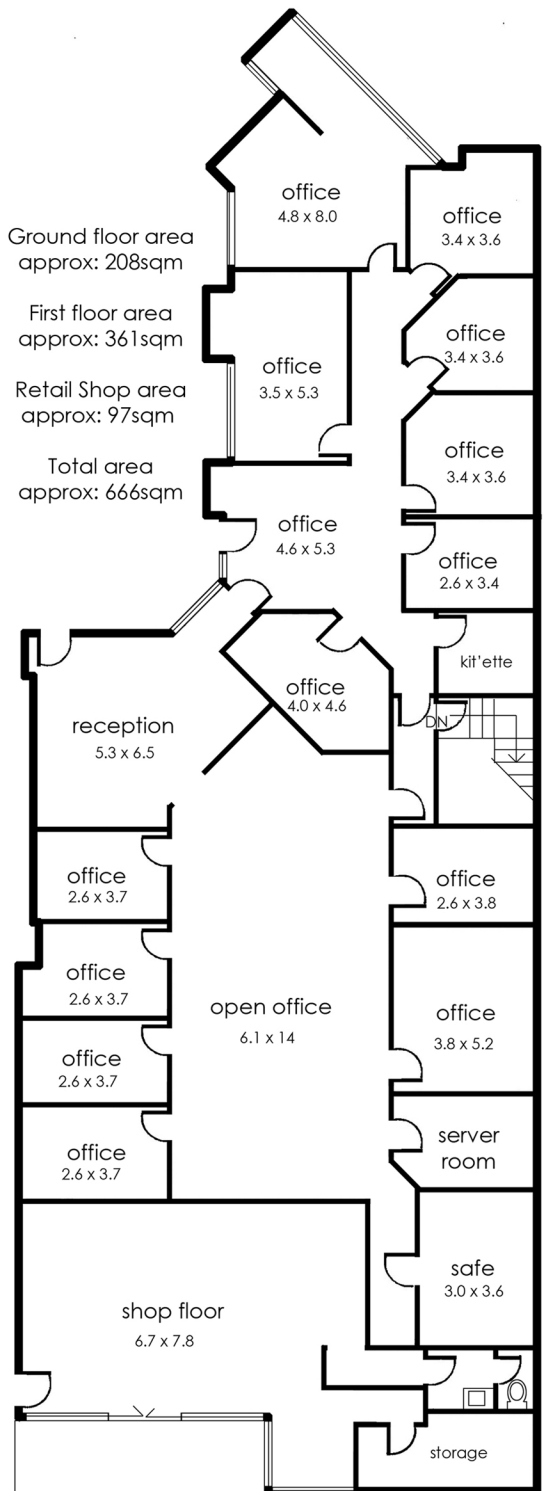


Ground floor area  
approx: 208sqm

First floor area  
approx: 361sqm

Retail Shop area  
approx: 97sqm

Total area  
approx: 666sqm



ENTRY LEVEL

## 257-261 Main Street Lilydale

© Produced by DND Floor Plans