

FOR LEASE



68-70 Malaga Drive, Malaga

Office

267 sqm

Modern Building

Well Partitioned Offices

Good Parking Onsite

Eric Rogers

m: 0412 228 555

e: egr@metwaywa.com

Peter Treichl

m: 0431 234 559

e: peter@metwaywa.com

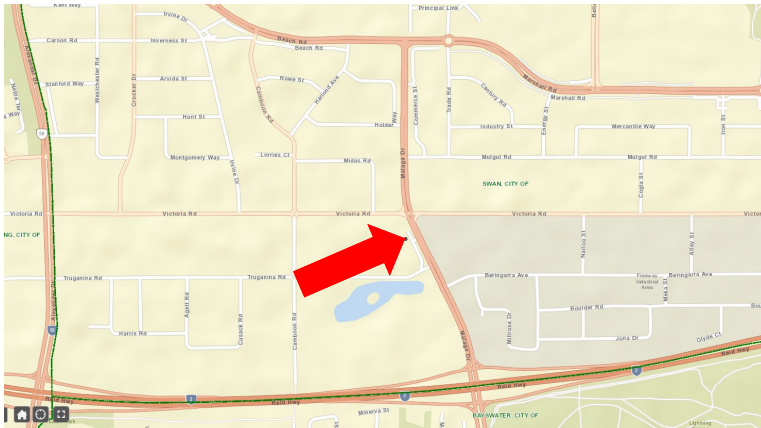
9228 2255 (24 Hours)

www.metwaywa.com

Licensed Estate Agents. Property Consultants. Auctioneers.

Real Estate and Business Agent Member of the Real Estate Institute of WA (Inc)
Licensee: Cityfield Investments Pty Ltd (ACN 078 234 974) as Trustee for the Real Estate
Trust - Trading as Metway Real Estate (ABN 93 918 167 259)

68 - 70 Malaga Drive, Malaga



Location

Malaga Drive immediately north of the Roe Highway traffic crossover.

Direct street exposure in this easily recognizable location with direct access to the Roe Highway. Upwards of 30,000 vehicles passing per day.

Premises

Modern building with first floor offices available for immediate occupancy.

Partitioned out to a good standard the partitioning may either stay or be removed to allow you to create your own space.

For more information or to arrange a viewing, please contact Eric Rogers on 0412 228 555.

Lettable Area

1st Floor Offices - 267 sqm

Rental (+GST)

\$170 /sqm pa (+GST)

\$3,750 pcm

Outgoings (+GST)

\$50 /sqm pa (+GST)

\$1,112 pcm

Parking

Ample On-Site Parking Available

Lease Term

3 - 5 years preferred

Eric Rogers

m: 0412 228 555

e: egr@metwaywa.com

Peter Treichl

m: 0431 234 559

e: peter@metwaywa.com

9228 2255 (24 Hours)
www.metwaywa.com

Disclaimer: The particulars contained in this brochure do not form part of any contract. While care has been taken in this presentation, no representation or warranty is made by the vendor/s or the selling agents. No responsibility is accepted for the accuracy of any information in this brochure. All persons must make their enquiries and satisfy themselves in all respects. Privacy Policy: The agents are committed to protecting your privacy. If at any time you choose not to receive information from them or wish to amend your personal information please notify them directly.