

**GOOD IS
PRIME
POSITION**

**GREAT IS
WHAT YOU DO
FROM HERE**

SYDNEY CORPORATE PARK
Bourke Road and O'Riordan Street
Alexandria NSW

MAKING
SPACE
FOR
GREATNESS



FLEXIBLE SPACES

Sydney Corporate Park is a 14.4 hectare mixed-use estate with over 100 businesses located on-site.

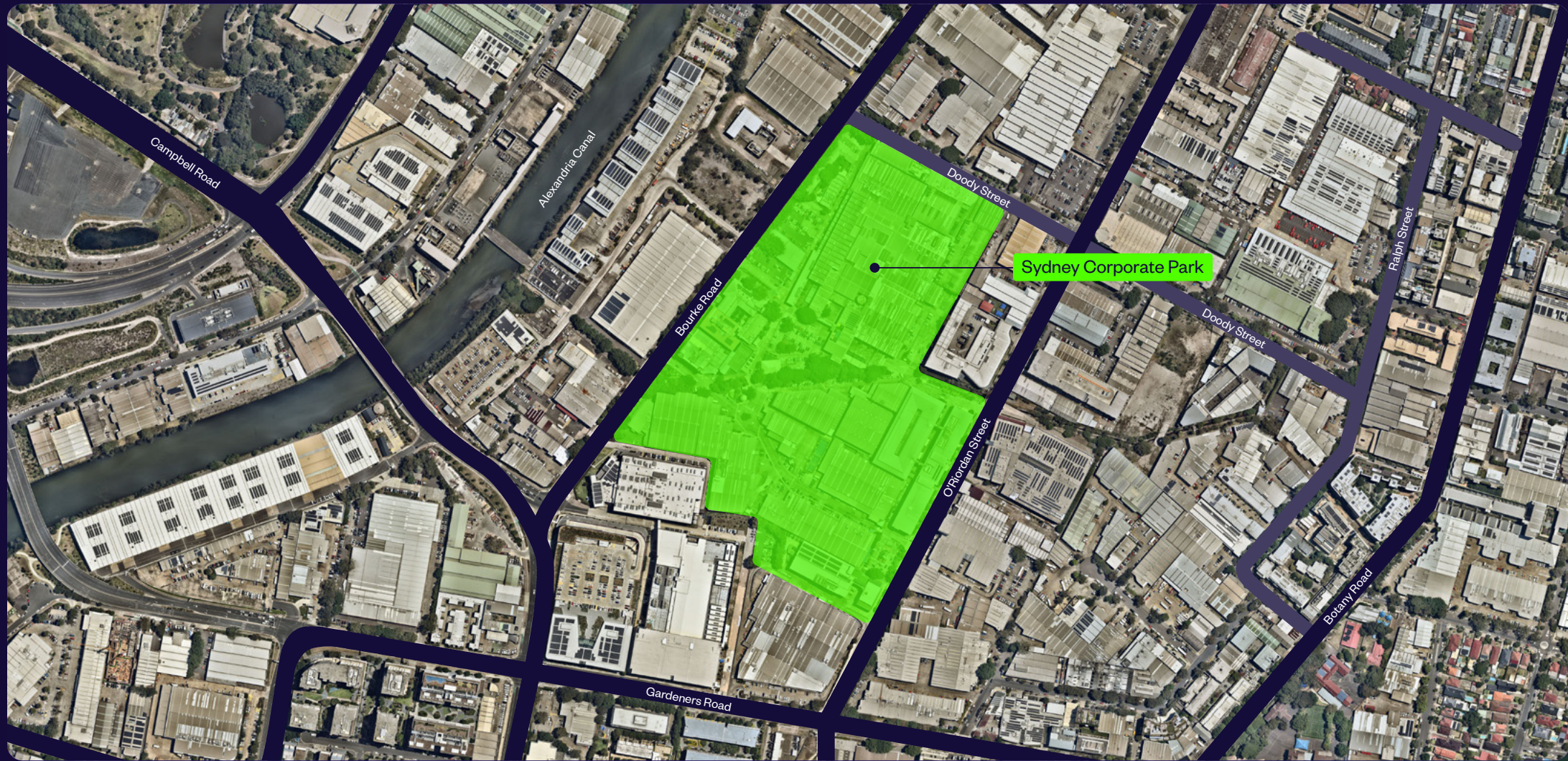
Ideally located in Alexandria, it is one of South Sydney's most diverse estates, encompassing a range of retail, sport, entertainment, office and warehouse businesses.

Property features

- + Quality office spaces
- + Excellent on-site amenity including cafés, gyms, childcare and 24-hour security
- + Complimentary shuttle bus operates between Central Station and the estate
- + Close proximity to bus stops, Mascot and Green Square train stations.



LOCATION



2KM

to Mascot
train station

2KM

to Green Square
train station

5KM

to Sydney
Airport

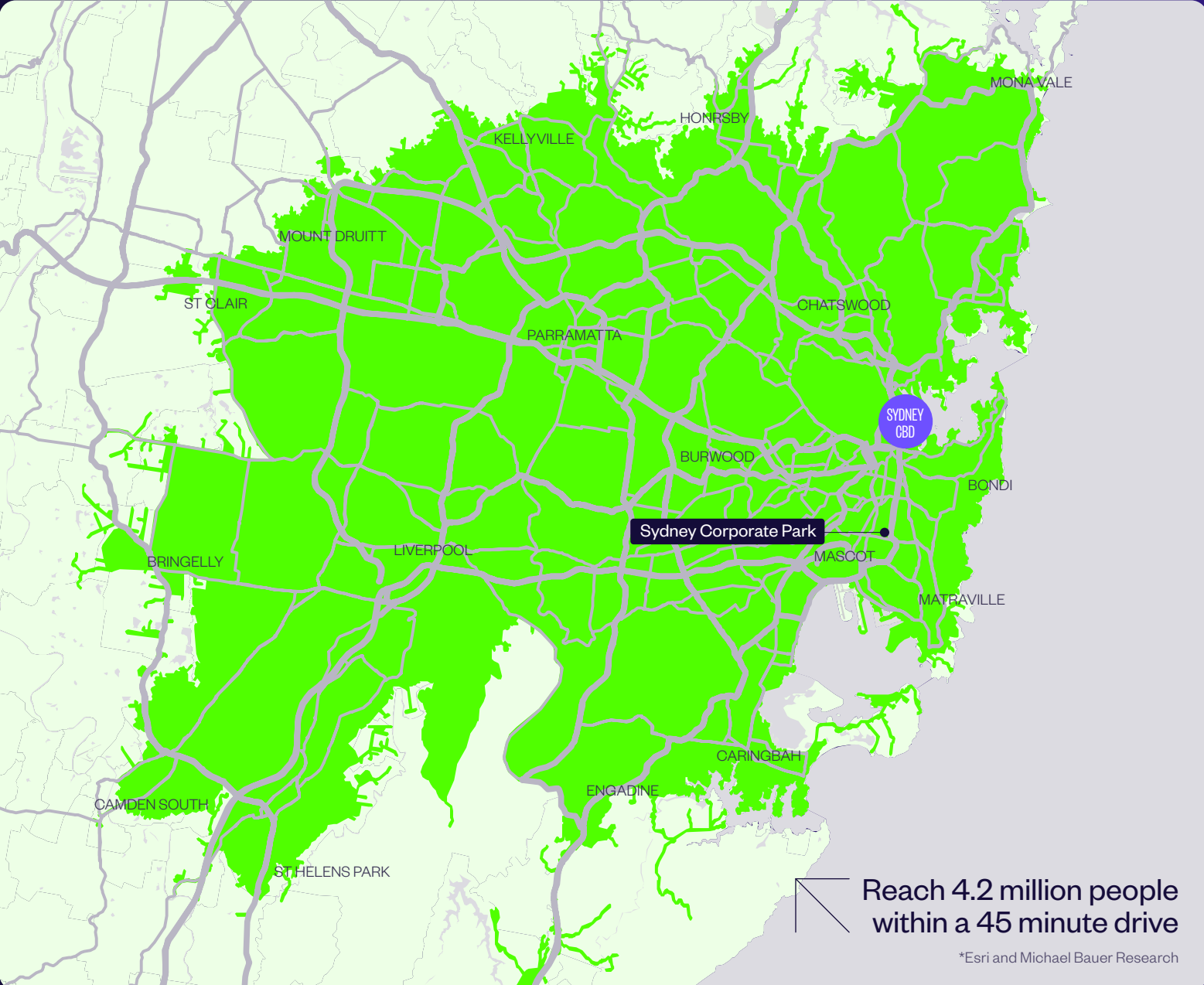
7KM

to Sydney
CBD

Strategically located in the heart of Alexandria, Sydney Corporate Park offers excellent accessibility, just 2kms from Mascot Station and 7kms from Sydney CBD. With a dedicated shuttle bus operating to and from Central Station for added convenience.

SPEED TO MARKET

WITHIN 45 MINUTE
DRIVE-TIME



Reach 4.2 million people
within a 45 minute drive

*Esri and Michael Bauer Research

KEY AREA STATISTICS

 **4.2M**
Total population

 **1.5M**
Total households

 **\$264.1BN**
Total purchasing power

TOTAL SPEND ON

 **\$7.6BN**
Clothing

 **\$23.9BN**
Food + beverage

 **\$5.8BN**
Personal care

 **\$1.3BN**
Online shopping

ACCESS

BUS ROUTES

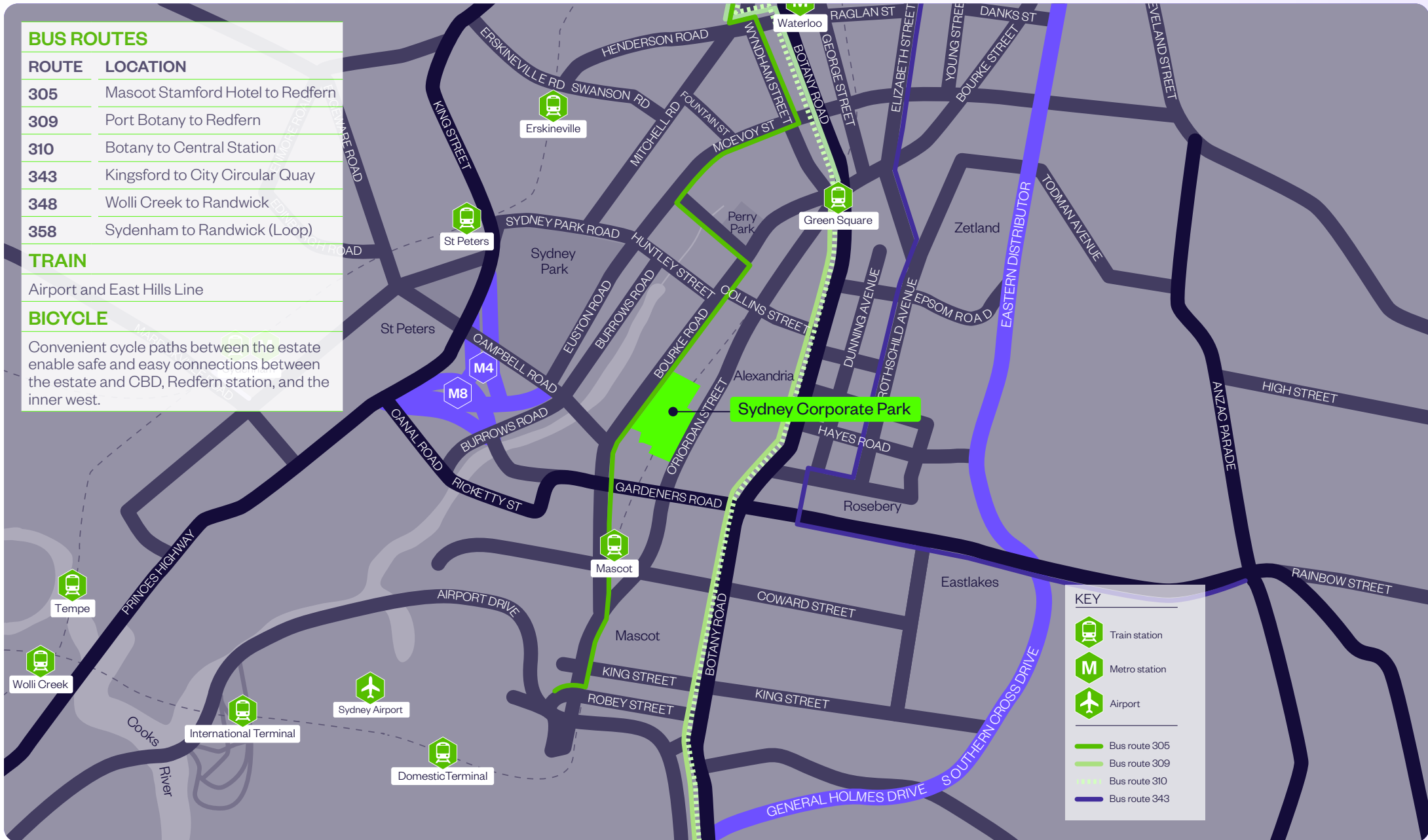
ROUTE	LOCATION
305	Mascot Stamford Hotel to Redfern
309	Port Botany to Redfern
310	Botany to Central Station
343	Kingsford to City Circular Quay
348	Wolli Creek to Randwick
358	Sydenham to Randwick (Loop)

TRAIN

Airport and East Hills Line

BICYCLE

Convenient cycle paths between the estate enable safe and easy connections between the estate and CBD, Redfern station, and the inner west.



KEY

- Train station
- Metro station
- Airport
- Bus route 305
- Bus route 309
- Bus route 310
- Bus route 343

AMENITY AND SERVICES

Sydney Corporate Park offers an outstanding level of amenity for staff and visitors.



Sport and leisure

There are multiple sport and leisure centres on-site, including Crunch Fitness, Indoor Padel and 9 Degrees Bouldering.

Entertainment

Holey Moley, Hijinx Hotel, Archie Brothers Cirque Electriq and Ultra Football offer unique options for corporate events or team building activities.

Food and beverage

There are numerous cafés on-site including Café Alexandria and Loveeat, as well as licensed venues such as Sydney Brewery Alexandria. All venues offer indoor and outdoor seating and catering is also available.



Services

There are multiple on-site services that can assist with daily activities, including, Officeworks, medical centre and car servicing.

Early childhood development

There are two child care centres on-site, Alexandria Montessori Academy and Alexandria Early Education both offer early childhood development.

Retail

Retail opportunities within the estate include car dealerships, Rexel Electrical Supplies and Hilti Power Tools.

AMENITIES



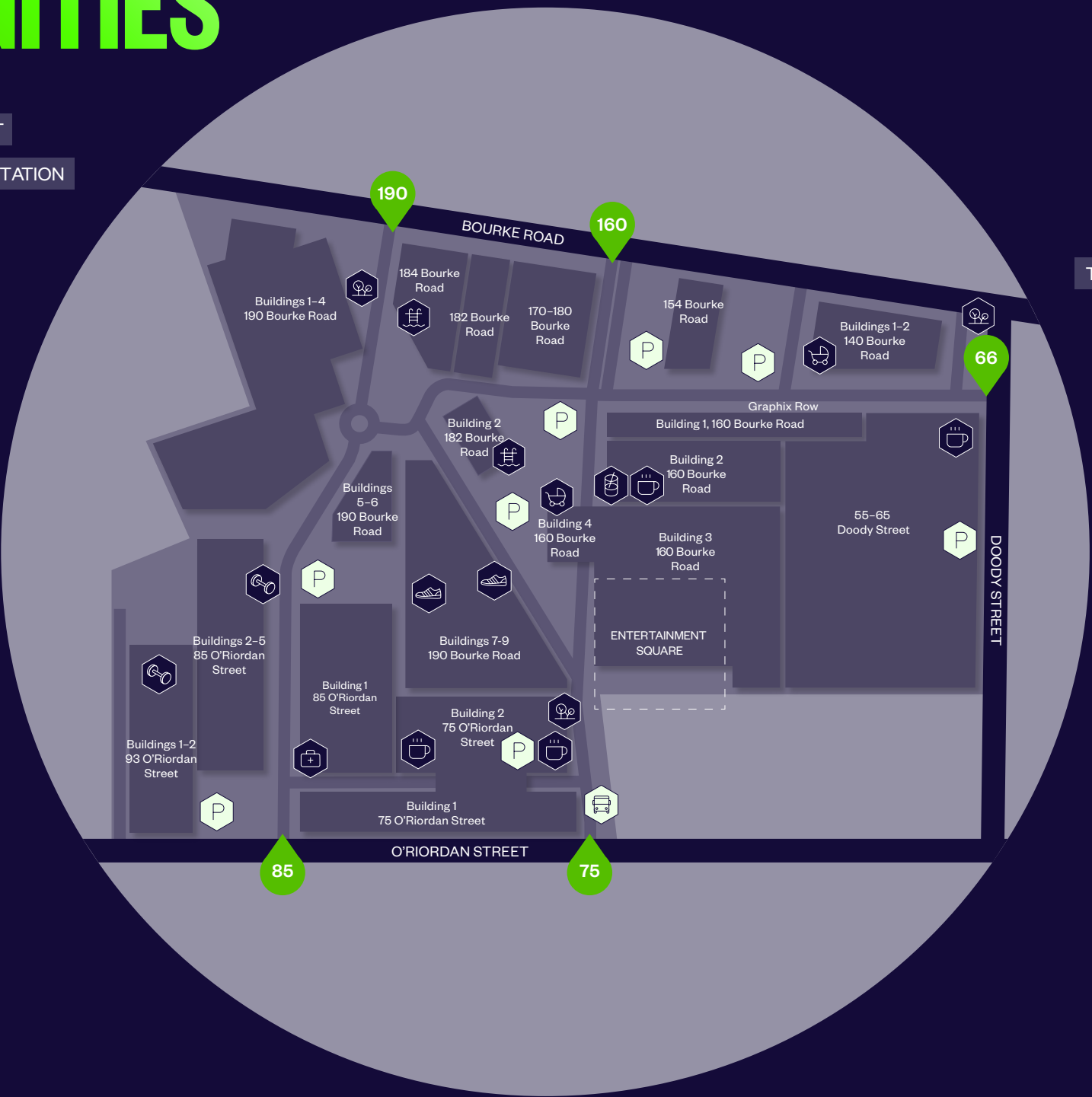
← TO SYDNEY AIRPORT

← TO MASCOT TRAIN STATION

TO GREEN SQUARE TRAIN STATION →

TO THE GROUNDS CAFÉ →

TO SYDNEY CBD →



Key

- Bus
- Carpark
- Bar
- Café / restaurant
- Sydney CBD
- Childcare
- Outdoor seating
- Gym
- Indoor sports centre
- Medical centre
- Pool

CONTACT US



Ari Paraskakis
Senior Property Manager

T. 02 9230 7286
M. 0432 140 568
ari.paraskakis@goodman.com

Derek Wong
Asset Manager

T. 02 9230 7390
M. 0404 182 889
derek.wong@goodman.com

Goodman
The Hayesbery
1-11 Hayes Road
Rosebery NSW 2018
T. 02 9230 7400

[VIEW THIS PROPERTY ONLINE →](#)

[goodman.com/au](https://www.goodman.com/au)

