

HOME

By Caydon



Artist's Impression: Kitchen

Welcome

Taking pride of place in Alphington's new neighbourhood is HOME By Caydon; a collection of architecturally designed 2 and 3 bedroom Terrace Homes, Skyhomes and Apartments.

With construction already underway, and 150 unique floorplans to choose from – there's never been a better time to find your HOME.

HOME

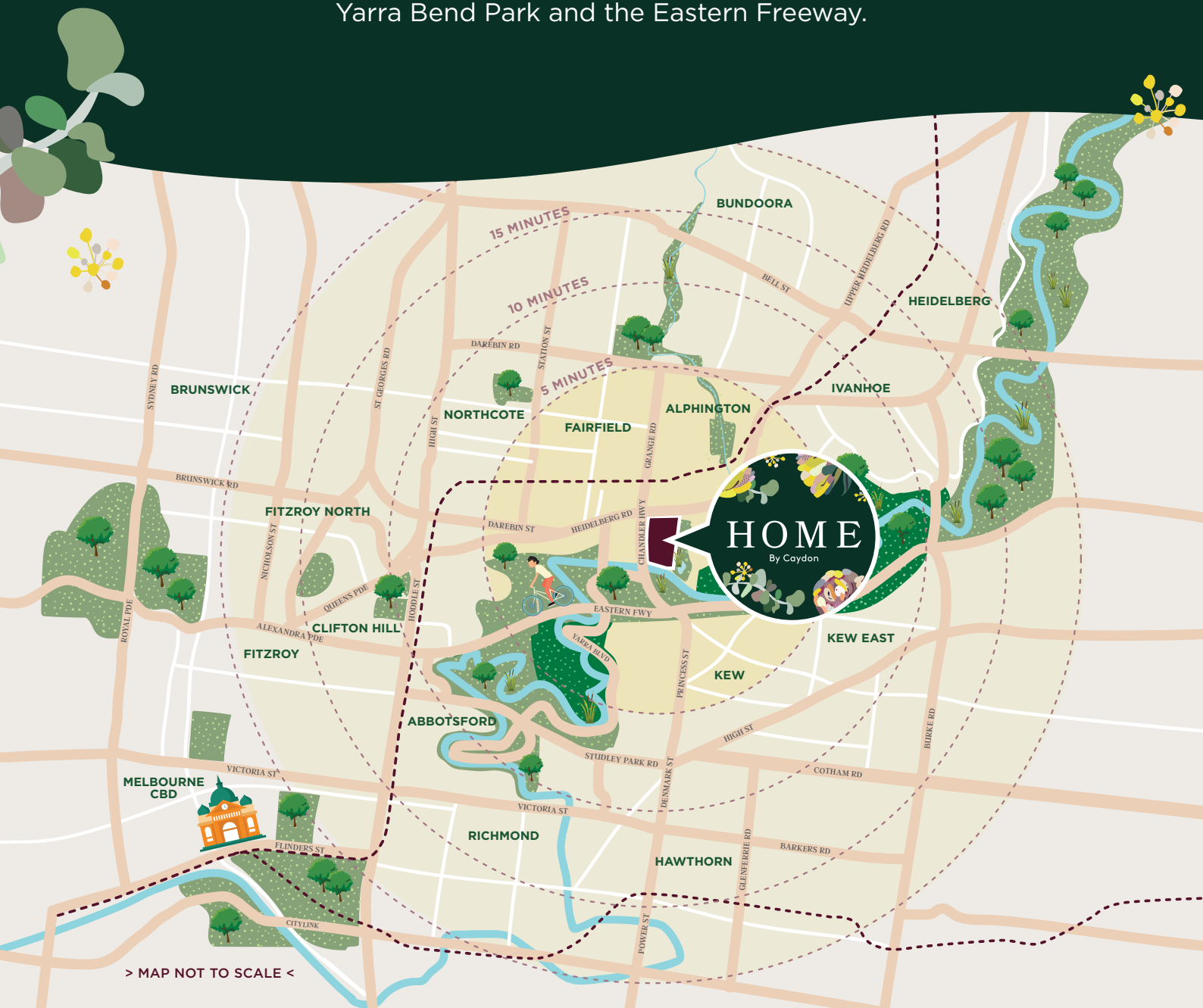
By Caydon



Location

Alphington is abuzz. This riverside suburb is located just 6.5km from Melbourne's CBD, and has all of life's necessities on your doorstep.

HOME is located on the corner of the Alphington Paper Mill Redevelopment site, and is within walking distance to public transport, prestigious schools, shopping, dining, cafes, bars, entertainment and parks. It's easy to venture out too, with direct access to Yarra River, Yarra Bend Park and the Eastern Freeway.



> MAP NOT TO SCALE <

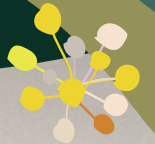
HOME

By Caydon



Apartments

Inside your apartment a sophisticated neutral palette creates a tranquil atmosphere. It's the perfect backdrop for your personal style. Raw materials influenced by the site's industrial heritage, give your living space a harmonious feel and metallic accents add a refined edge.

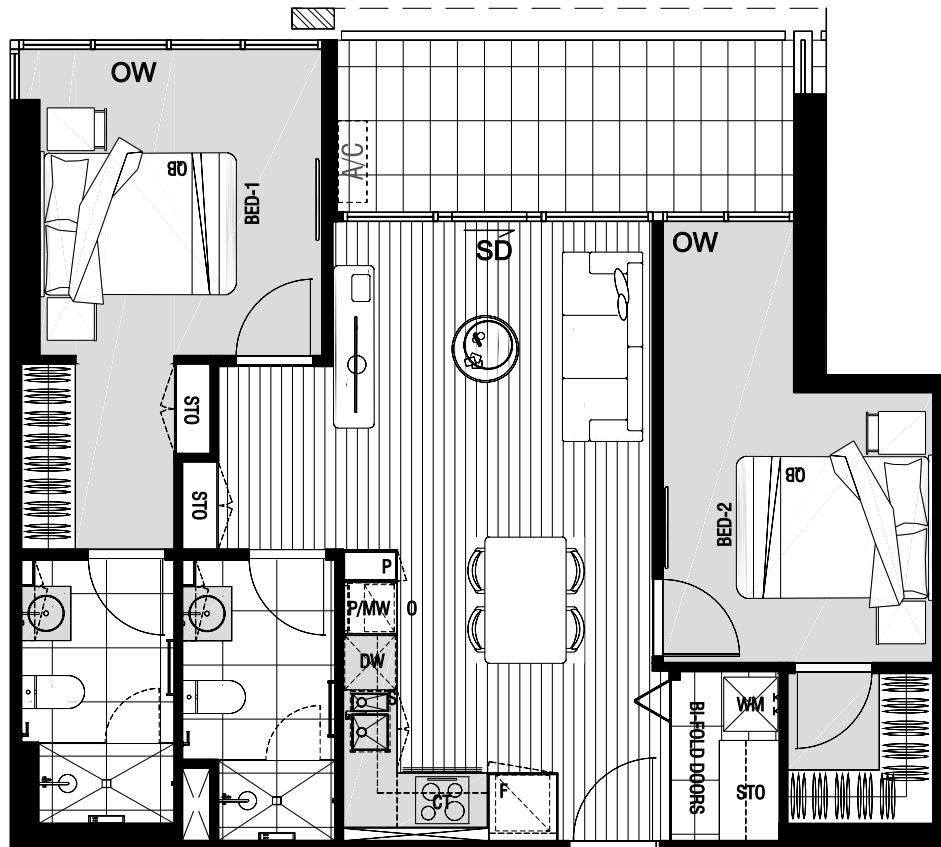


Artist's Impression: Bedroom

HOME

By Caydon

Two-Bedroom Apartment Feature Floorplan 309



KEY FEATURES

- Open-plan living
- Timber flooring in living area
- Carpeted bedrooms
- Generous storage and fitted robes
- Abundance of natural light
- Upgrades available

\$702,375

This is an example layout. With more than 150 different floorplan options to choose from, we're confident we can help you find a home to suit your needs.



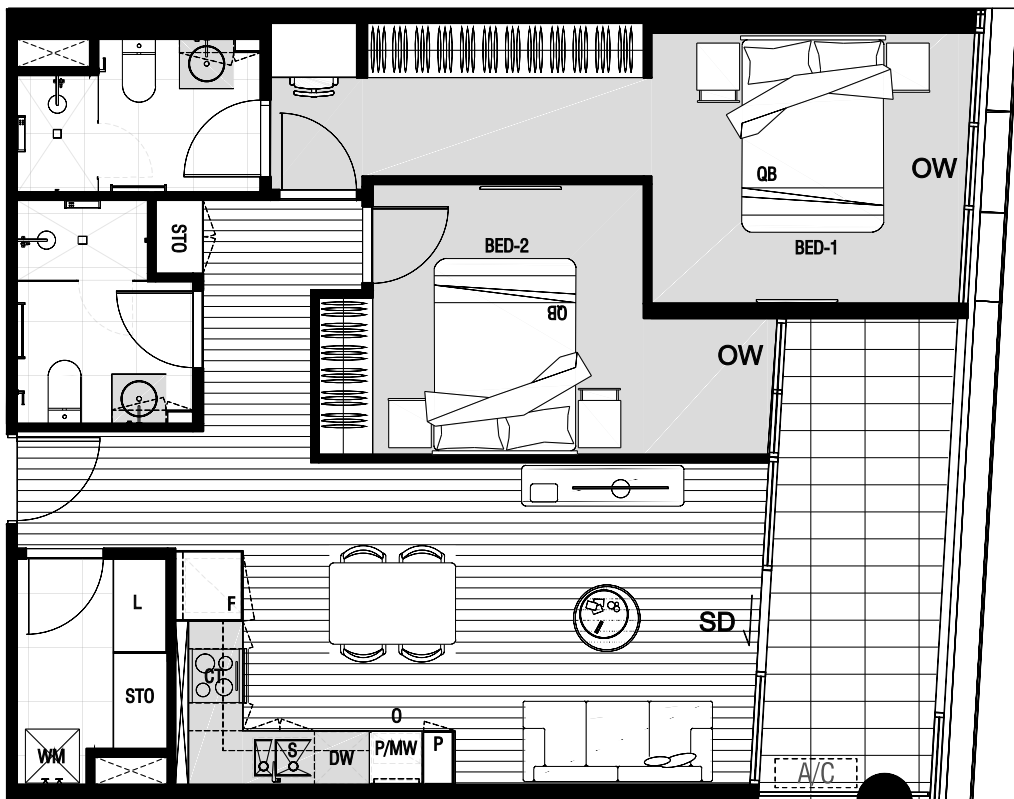
Contact our team to explore more options.

Dimensions and areas are approximate and are subject to change. Internal measurements are taken from centreline of party walls and external face of the outside wall. Prospective purchasers must rely on their own enquiries and should refer to plans, terms and conditions in the contract of sale. External air-conditioning condenser is in an indicative position and may be subject to change. Loose furniture, white goods and planters represented are not included. Pricing correct as of MAY 2021.

HOME

By Caydon

Two-Bedroom Apartment Feature Floorplan 1201



KEY FEATURES

- Open-plan living
- Timber flooring in living area
- Carpeted bedrooms
- Generous storage and fitted robes
- Abundance of natural light
- Upgrades available

\$769,000

This is an example layout. With more than 150 different floorplan options to choose from, we're confident we can help you find a home to suit your needs.



Contact our team to explore more options.

Dimensions and areas are approximate and are subject to change. Internal measurements are taken from centreline of party walls and external face of the outside wall. Prospective purchasers must rely on their own enquiries and should refer to plans, terms and conditions in the contract of sale. External air-conditioning condenser is in an indicative position and may be subject to change. Loose furniture, white goods and planters represented are not included. Pricing correct as of MAY 2021.



HOME
By Caydon

Skyhomes

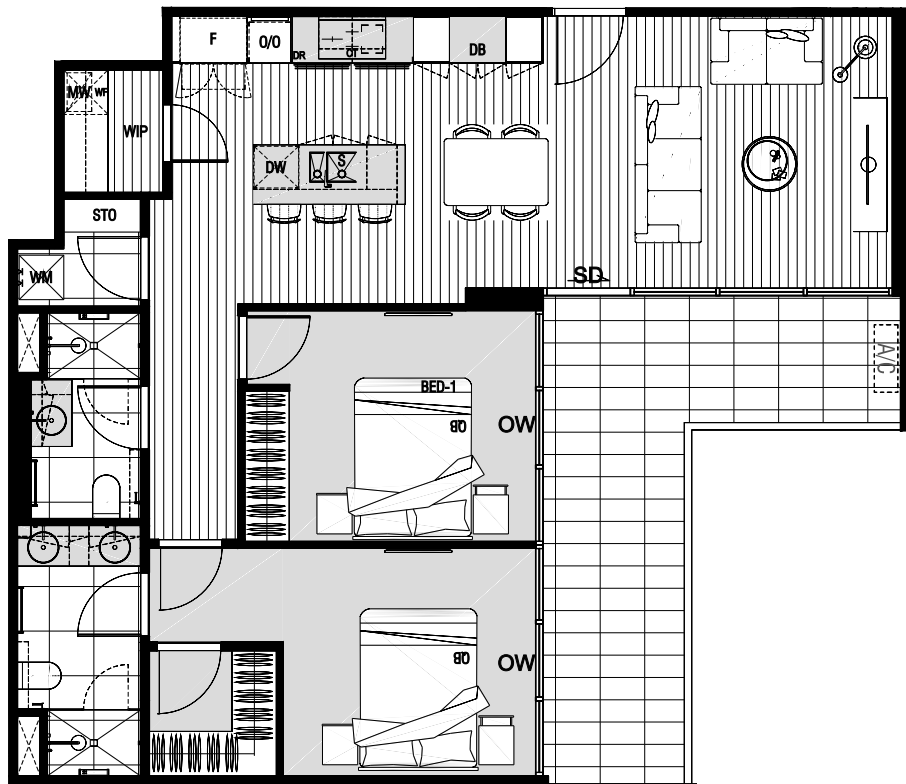
What makes a Skyhome? Space, light and the best views in the building. If you ever wanted to know what life on cloud nine feels like, step inside. Our single-level, dual-level and penthouse Skyhomes are the best apartments you'll find at HOME. There are large landscaped terraces, winter gardens and city facing views on offer.



HOME

By Caydon

Skyhome Penthouse Feature Floorplan 1406



KEY FEATURES

- Walk-in pantry and wine fridge
- Master bedroom with double vanity ensuite
- Built-in robes
- Smeg appliances
- Upgrades available

\$914,000

This is an example layout. With more than 150 different floorplan options to choose from, we're confident we can help you find a home to suit your needs.



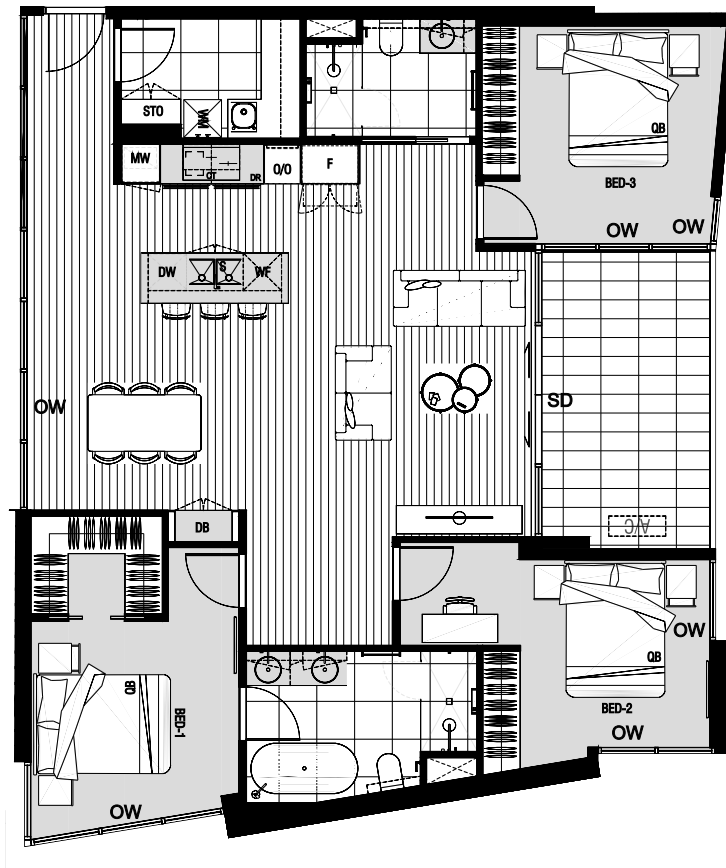
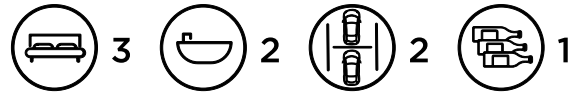
Contact our team to explore more options.

Dimensions and areas are approximate and are subject to change. Internal measurements are taken from centreline of party walls and external face of the outside wall. Prospective purchasers must rely on their own enquiries and should refer to plans, terms and conditions in the contract of sale. External air-conditioning condenser is in an indicative position and may be subject to change. Loose furniture, white goods and planters represented are not included. Pricing correct as of MAY 2021.

HOME

By Caydon

Skyhome Penthouse Feature Floorplan 1407



KEY FEATURES

- Dry bar with concealed Tech Draw
- Three spacious bedrooms with built-in robes
- Ensuite with double vanity and bathtub
- Smeg appliances
- Laundry room with ample storage

\$1,576,260

This is an example layout. With more than 150 different floorplan options to choose from, we're confident we can help you find a home to suit your needs.



Contact our team to explore more options.

Dimensions and areas are approximate and are subject to change. Internal measurements are taken from centreline of party walls and external face of the outside wall. Prospective purchasers must rely on their own enquiries and should refer to plans, terms and conditions in the contract of sale. External air-conditioning condenser is in an indicative position and may be subject to change. Loose furniture, white goods and planters represented are not included. Pricing correct as of MAY 2021.

HOME

By Caydon



Artist's Impression: Terrace Home

Terrace Homes

Inside your Terrace Home, the sophisticated neutral palette creates an uplifting atmosphere. It's the perfect setting in which to entertain or unwind.

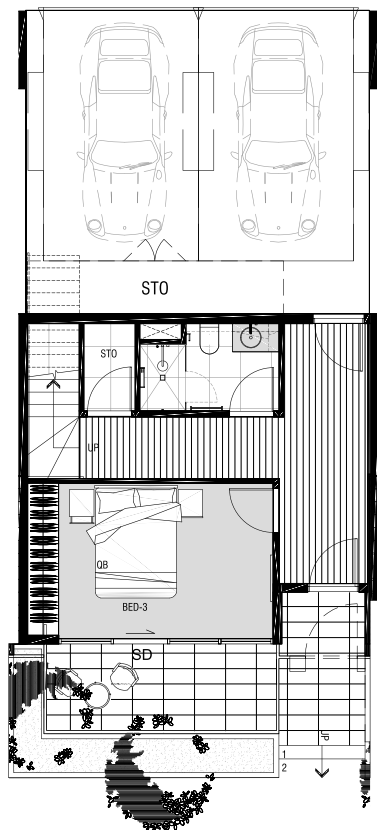
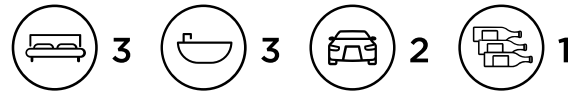
Natural materials reign supreme throughout. Woodgrain joinery, wool-rich carpets, solid timber partitions and brass metal handles give your living spaces a refined, pared-back feel.

And the proportions are generous: three queen-sized bedrooms with walk-in and fitted robes, ensuites and abundant natural light, open-plan living, floor-to-ceiling windows, a double-height lightwell above the lounge, and bi-fold doors out to the balcony all convey a sense of seamless spaciousness.

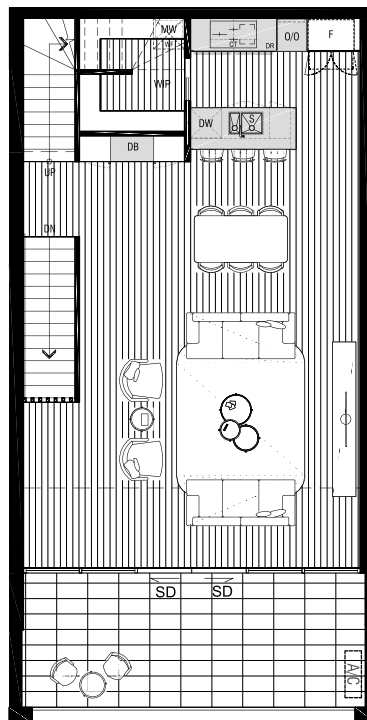
HOME

By Caydon

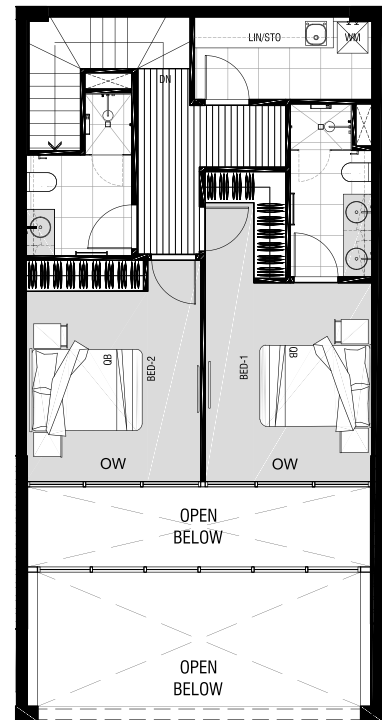
Terrace Home Feature Floorplan G09



GROUND LEVEL



MEZZANINE LEVEL



FIRST LEVEL

KEY FEATURES

- Three-storey Terrace Home
- Spacious kitchen with Smeg appliances
- Built-in pantry and wine fridge
- Dry bar with concealed Tech Drawer
- Built-in robes with custom joinery
- Three soft-carpeted bedrooms
- Private access via The Mews

\$1,673,500

This is an example layout. With more than 150 different floorplan options to choose from, we're confident we can help you find a home to suit your needs.



Contact our team to explore more options.

Dimensions and areas are approximate and are subject to change. Internal measurements are taken from centreline of party walls and external face of the outside wall. Prospective purchasers must rely on their own enquiries and should refer to plans, terms and conditions in the contract of sale. External air-conditioning condenser is in an indicative position and may be subject to change. Loose furniture, white goods and planters represented are not included. Pricing correct as of MAY 2021.



HOME

By Caydon

Visit us

Book an appointment to receive more information about offers, fixtures & finishes, upgrades, home automation and more.

HOME Display Suite

Ground Floor, 436 Johnston St, Abbotsford
(Enter via Trenerry Crescent)

Open daily 10am – 4pm
1800 717 606

This is the life.