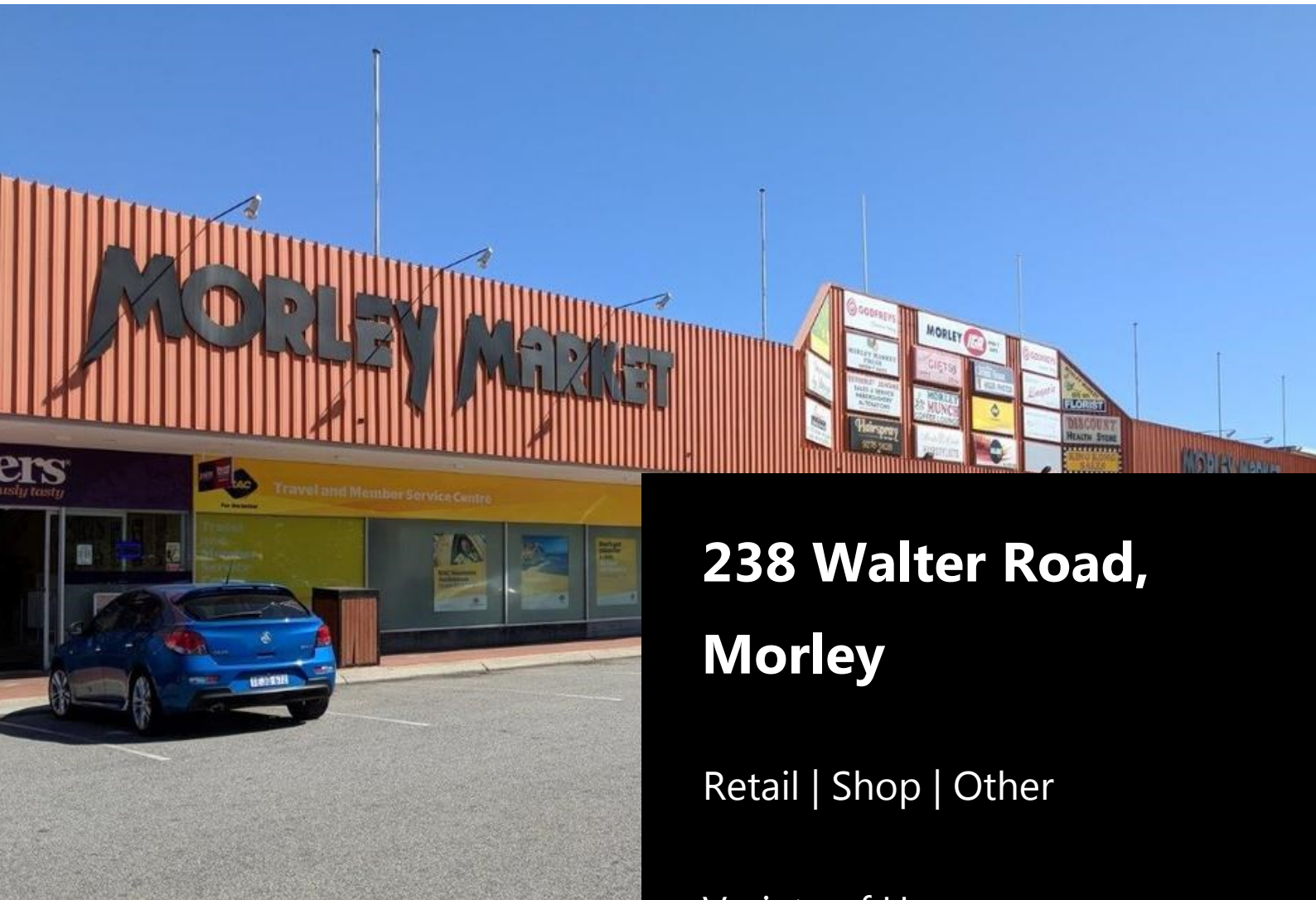


FOR LEASE



238 Walter Road, Morley

Retail | Shop | Other

Variety of Uses

Situated in the Morley Markets

Great Exposure

Eric Rogers

0412 228 555

egr@metwaywa.com

9228 2255 (24 Hours)

www.metwaywa.com

Licensed Estate Agents. Property Consultants. Auctioneers.

Real Estate and Business Agent Member of the Real Estate Institute of WA (Inc)
Licensee: Cityfield Investments Pty Ltd (ACN 078 234 974) as Trustee for the Real Estate
Trust - Trading as Metway Real Estate (ABN 93 918 167 259)

238 Walter Road, Morley



Location

Prime location, nestled between the Galleria Shopping Centre and Coventry Markets. This location offers a great exposure, parking on your front door and is well positioned the popular retail and entertainment precinct. Close proximity tenants include Spud Shed, Dan Murphy's, Bunnings and more which are all within walking distance.

Premises

Lot 6 is 70 sqm with direct Mall exposure and it is ideal for a variety of uses such as a shop or any other use requiring position, exposure and access.

Lettable Area

70 sqm

Rental (+GST)

\$200 psm pa

Outgoings (+GST)

\$1,000 pcm

Parking

On-Site Parking Available

Lease Term

3 - 5 Years

Eric Rogers

m: 0412 228 555

e: egr@metwaywa.com

9228 2255 (24 Hours)

www.metwaywa.com

Disclaimer: The particulars contained in this brochure do not form part of any contract. While care has been taken in this presentation, no representation or warranty is made by the vendor/s or the selling agents. No responsibility is accepted for the accuracy of any information in this brochure. All persons must make their enquiries and satisfy themselves in all respects. Privacy Policy: The agents are committed to protecting your privacy. If at any time you choose not to receive information from them or wish to amend your personal information please notify them directly.