

# INDUSTRIAL WAREHOUSE

VACANCIES	SQM	AVAILABLE	LINK
<b>190 Bourke Road</b>			
Unit A, Building 7	1,281	Now	<a href="#">→</a>
Unit 1, Building 9	685	Now	<a href="#">→</a>
<b>55 Doody Street</b>			
Unit 4A (sublease)	4,387-4,724	Now	<a href="#">→</a>



# SITE PLAN



■ FOR LEASE - INDICATIVE OF VACANCY WITHIN BUILDING

# UNIT A, BUILDING 7 PLAN

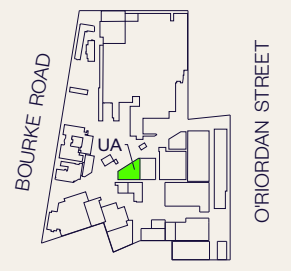
190 Bourke Road

VACANCIES LIST →

AREA SCHEDULE	SQM
Warehouse	1,281



LOCATION PLAN



NOT TO SCALE

# UNIT 1, BUILDING 9 PLAN

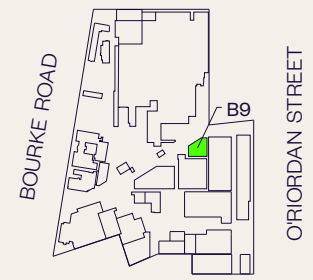
190 Bourke Road

VACANCIES LIST →

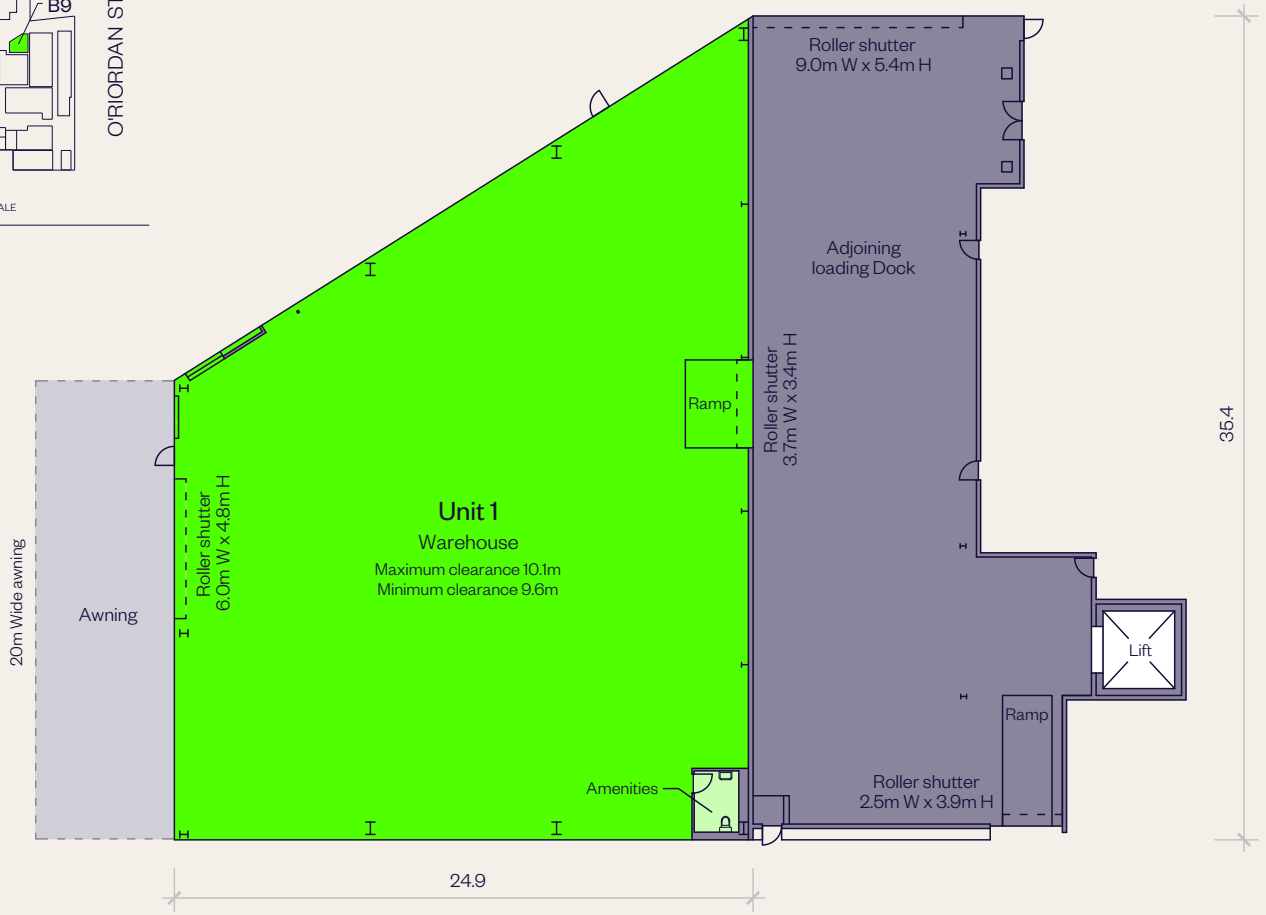
AREA SCHEDULE	SQM
Ground floor	
Warehouse	685.5



LOCATION PLAN



NOT TO SCALE



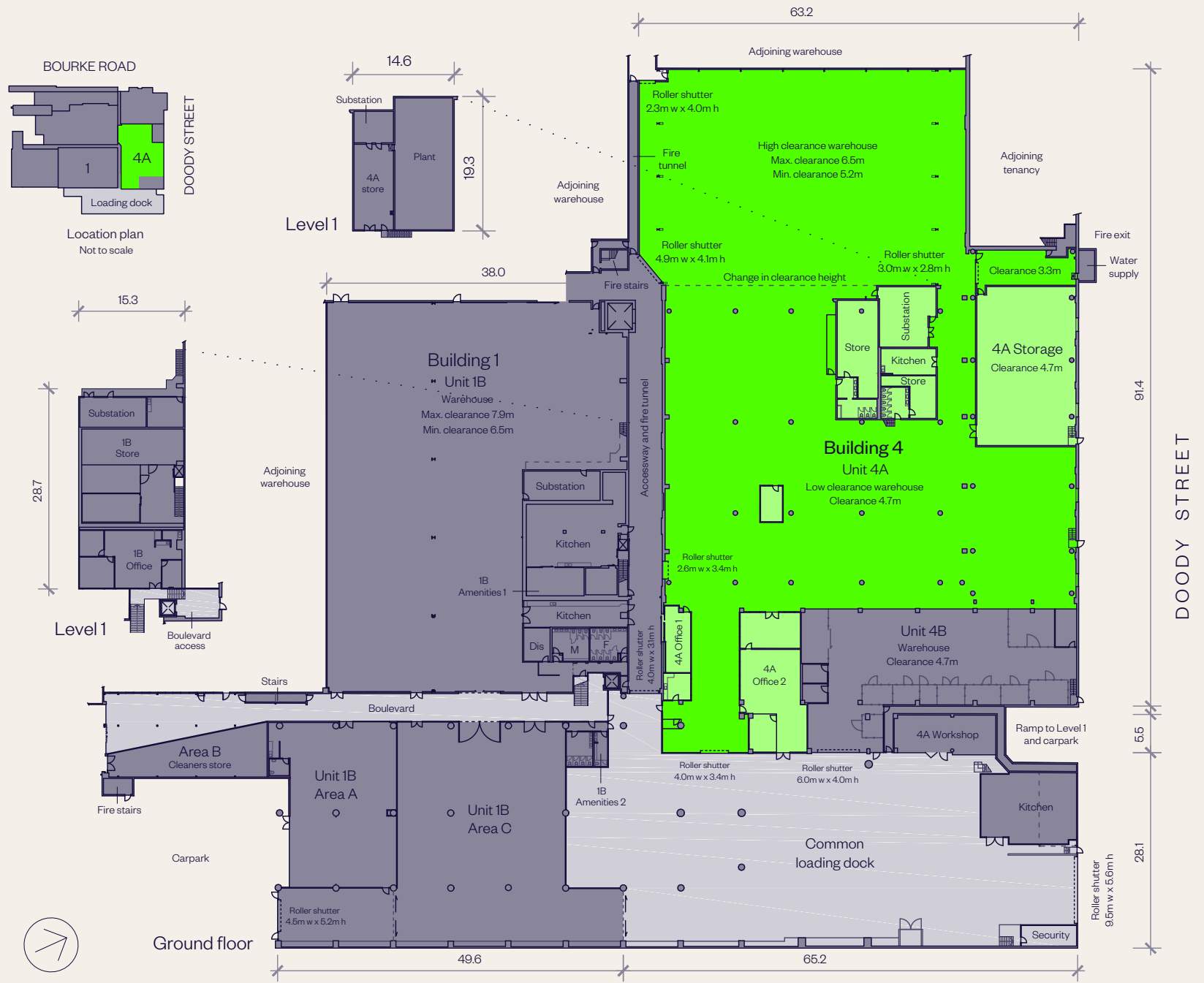
■ FOR LEASE

# UNIT 4A PLAN

55 Doody Street

VACANCIES LIST →

AREA SCHEDULE	SQM
Warehouse	3,889
Office 1	54
Office 2	176
Amenities	189
Level 1 Storage	79
<b>Total</b>	<b>4,387</b>
4A storage (if required)	337
<b>Total</b>	<b>4,724</b>



■ FOR LEASE

# CONTACT US



Ari Paraskakis  
Senior Property Manager

T. 02 9230 7286  
M. 0432 140 568  
[ari.paraskakis@goodman.com](mailto:ari.paraskakis@goodman.com)

Derek Wong  
Asset Manager

T. 02 9230 7390  
M. 0404 182 889  
[derek.wong@goodman.com](mailto:derek.wong@goodman.com)

**Goodman**  
The Hayesbery  
1-11 Hayes Road  
Rosebery NSW 2018  
T. 02 9230 7400

[VIEW THIS PROPERTY ONLINE →](#)

[goodman.com/au](https://www.goodman.com/au)

