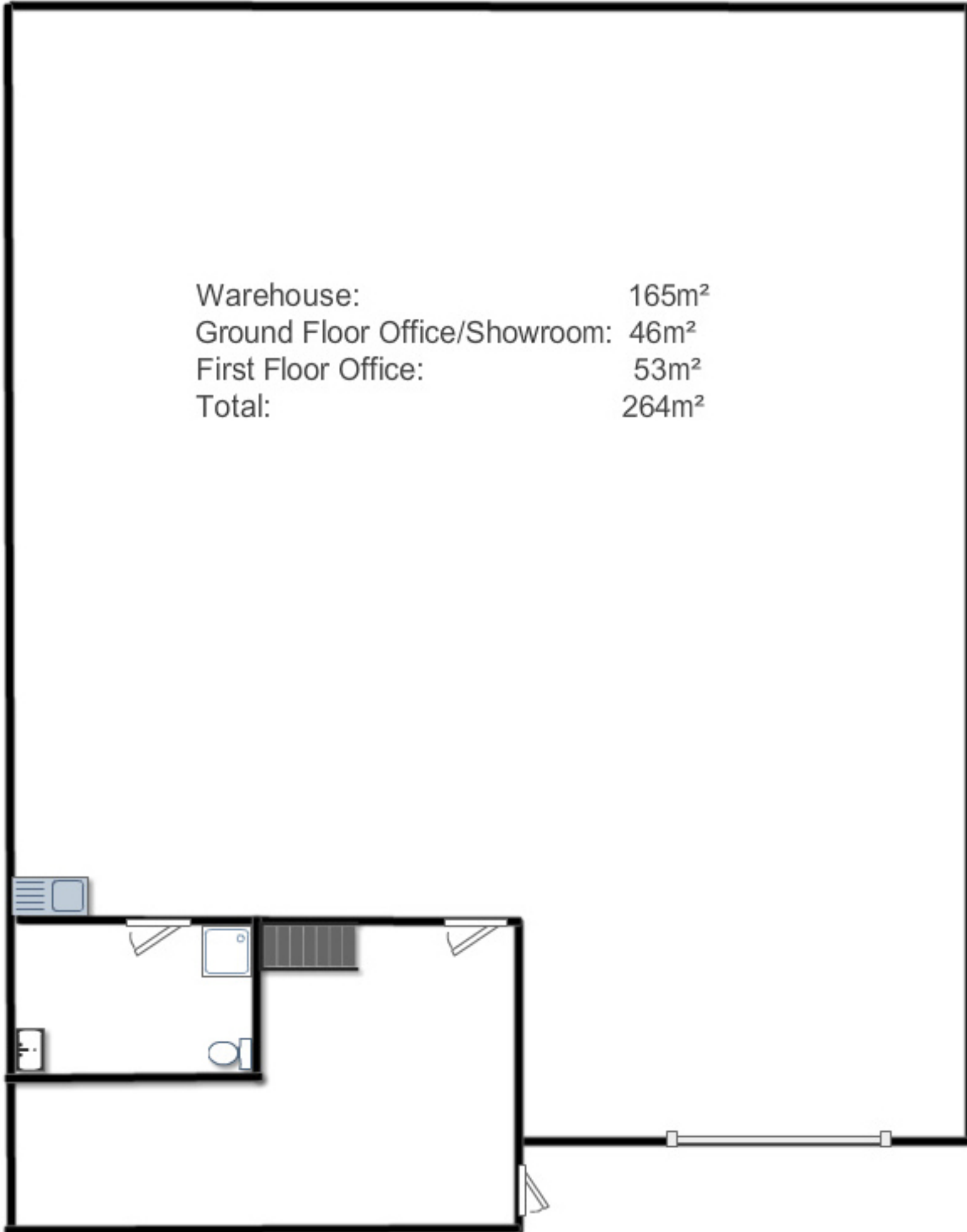


Unit 3/2 Heald Road, Ingleburn

Warehouse: 165m²
Ground Floor Office/Showroom: 46m²
First Floor Office: 53m²
Total: 264m²



Disclaimer: This floorplan has been provided as a guide only and is not drawn to scale.
IZRE cannot guarantee its accuracy and all interested parties should rely on their own measurements.