

**GOOD IS
EFFICIENT
DESIGN**

signage

signage

**GREAT IS
WHAT YOU DO
FROM HERE**

REDBANK MOTORWAY ESTATE
36 Weedman Street, Redbank, QLD

MAKING
SPACE
FOR
GREATNESS





We don't believe in good. Or good enough.

We don't believe in the short-term or taking short-cuts. We don't believe in putting business before people. Or anything before quality. We believe in great. Although we don't believe we're quite there yet. We believe in the importance of location and sustained growth and doing it right the first time. We believe in having integrity, always. We believe that knowledge is everything and perfection is in the details. That it is the little things that add up to make the biggest difference. That's why there's a plus in our logo. It's a reminder to keep going above and beyond for our customers, our partners and our staff. To be the best, we believe, relies on every single one of us working together. To this end, we believe we can be better than good. **We believe we can be great.**

OVERVIEW

Redbank Motorway Estate is the leading industrial hub in southwest Brisbane, situated adjacent to the Ipswich Motorway.

AREA SCHEDULE	SQM
Warehouse	4,044
Office	419
Total building area	4,423

Property features

- + Unique opportunity to secure a bespoke 4,423 sqm, stand-alone warehouse and office
- + 1,677 sqm exclusive hardstand with 15m awning
- + Crane enabled infrastructure
- + Striking office area with contemporary facade.

Sustainability features

- + Water reticulation for re-use in landscaping and amenities
- + Targeting a 5 Star Green Star rating for design and construction
- + LED lighting throughout
- + 100kW rooftop solar system
- + 4 dedicated EV car parking spaces.



VIEW FROM ABOVE



BRISBANE CBD

Rheinmetall

L'Oréal

Visy

FedEx

DB Schenker

Australia Post

Lawrence & Hanson

Quantum Systems

CHEP

Asahi - under construction

Progress Rail

Officeworks - under construction

Bapcor

36 Weedman Street

Cosentino

Coles

Coles

Redbank Railway Station

Ipswich Motorway

PERSPECTIVE



Artist's impression

PERSPECTIVE - HARDSTAND



Artist's impression

IN GOOD COMPANY

Customers who call Redbank Motorway Estate home



Coles has relocated to a 66,000 sqm state-of-the-art automated facility at Redbank Motorway Estate as part of their supply chain modernisation strategy.



The world's largest air express network and fourth largest logistics company, Fedex relocated their 28,000 sqm regional head office and distribution centre to Redbank. Their fully automated warehouse is capable of sorting up to 15,000 parcels per hour.



DB Schenker relocated from Brisbane Airport to their new 47,000 sqm Queensland distribution centre, saving 1 hour on overnight Sydney to Brisbane shuttle. The facility receives over 5,000 containers per annum.

Officeworks (via DB Schenker)

Order any one of 17,000 products online stored at Redbank before 11.30am for same day delivery in Brisbane Metro or Gold Coast areas.



L'Oréal has moved into a new 14,500 sqm distribution centre optimised to help meet rising delivery and service expectations for its 30 beauty brands.



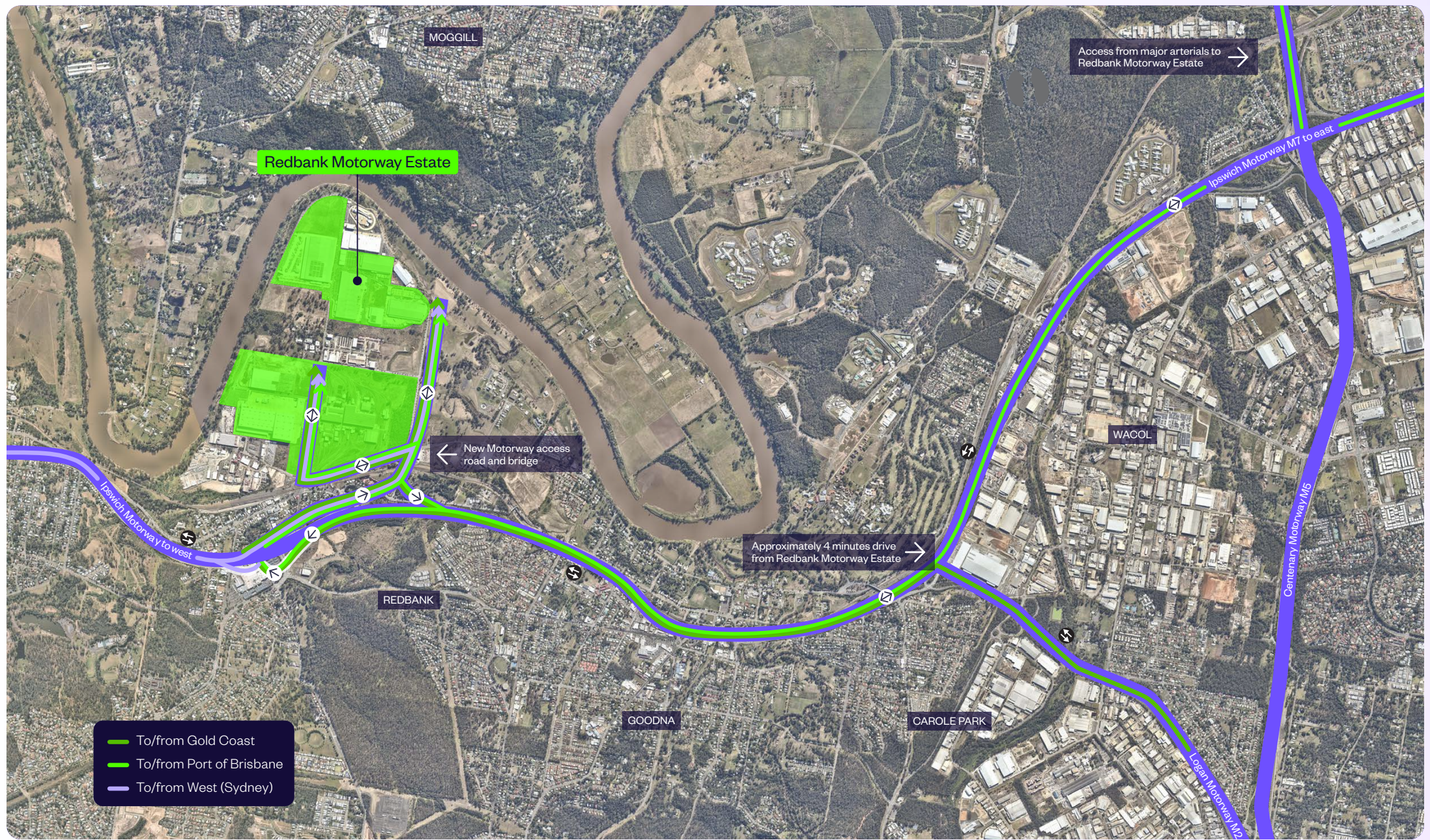
Australia Post moved to Redbank into a new purpose-built 49,000 sqm facility which is their largest parcel and distribution centre in Australia. Significant expenditure on the latest automation and robotics allows Australia Post to sort up to 35,000 parcels per hour, delivering more efficiently and faster to consumers.



The Bapcor Distribution Centre is a 44,000 sqm purpose-built, sustainable space at Redbank Motorway Estate that consolidates the Autobarn, Autopro, Truckline, Midas and Burson Auto Parts businesses.



ACCESS



LOCATION



36 Weedman Street

Artist's impression

1KM
to Ipswich
Motorway

1.5KM
to Redbank
train station

2KM
to Redbank
Plaza

28KM
to Brisbane
CBD

Redbank Motorway Estate is ideally located in the thriving South East location of Ipswich, benefiting from excellent road, rail and public transport connectivity.



As an A-double and B-double approved estate, businesses relocating to Redbank Motorway Estate can enjoy a range of additional cost savings that A-double access can bring to your bottom line.

A-double vehicles permit the transportation of 2 x 40 foot containers on one truck, allowing you to move larger loads using fewer trucks.

With A-doubles you can save on fuel, drivers, insurance, reduce carbon footprint and maintenance costs.

REDBANK MOTORWAY ESTATE

A-DOUBLE



MAJORITY OF ESTATES

SEMI-TRAILER



SOME ESTATES

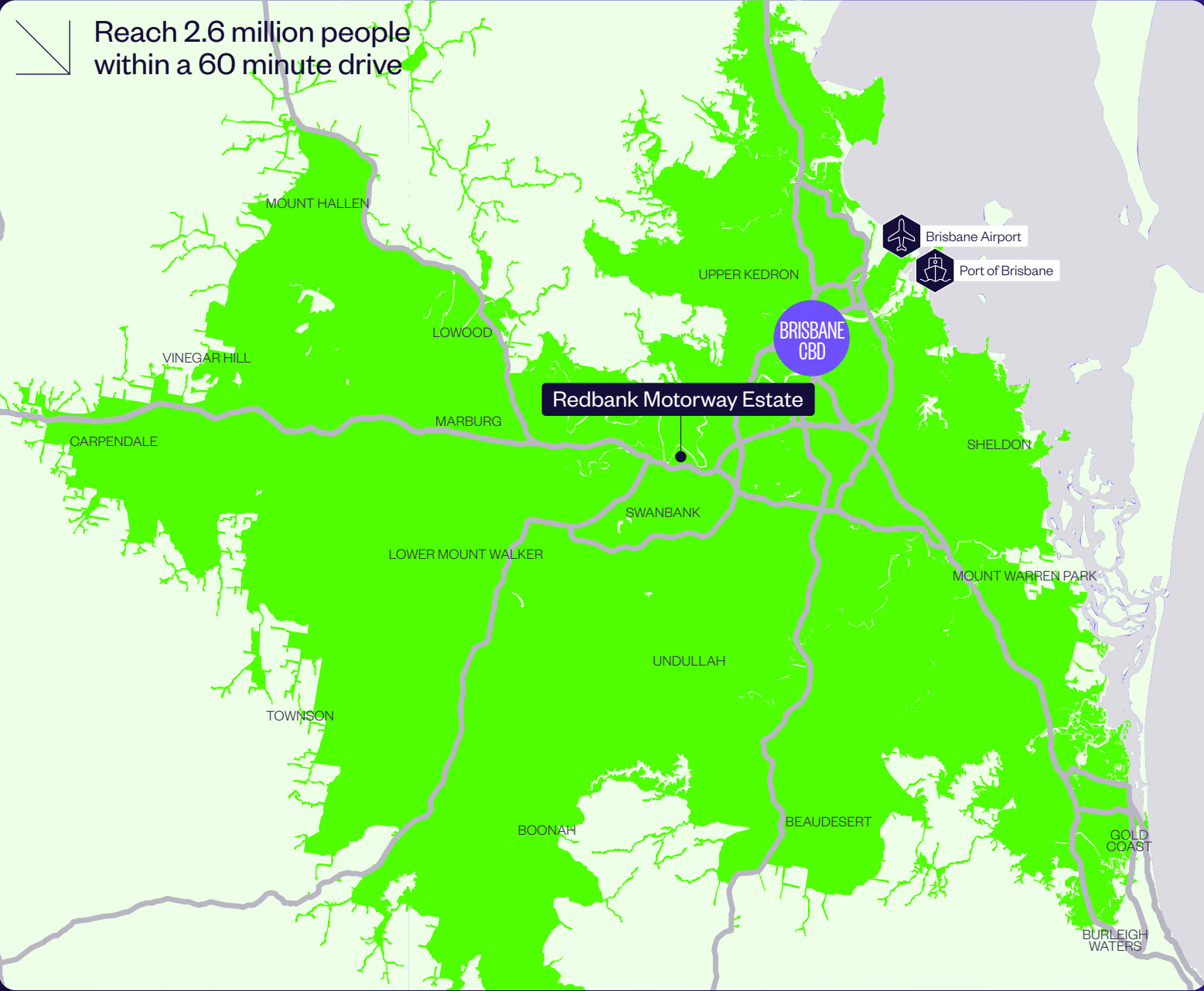
B-DOUBLE






ACCESS ADVANTAGE

SPEED TO MARKET





WITHIN 60 MINUTE
DRIVE-TIME



KEY AREA STATISTICS

-  **2.6M**
Total population
-  **916,931**
Total households
-  **\$145.9BN**
Total purchasing power

TOTAL SPEND ON

-  **\$4.4BN**
Clothing
-  **\$14.4BN**
Food + beverage
-  **\$3.5BN**
Personal care
-  **\$707.5M**
Online shopping

AMENITY AND SERVICES

Click on interactive links for more information on nearby services



↘
On-site café



↘
Redbank Plaza



↘
Town square Redbank Plains



↘
Montessori Pathways

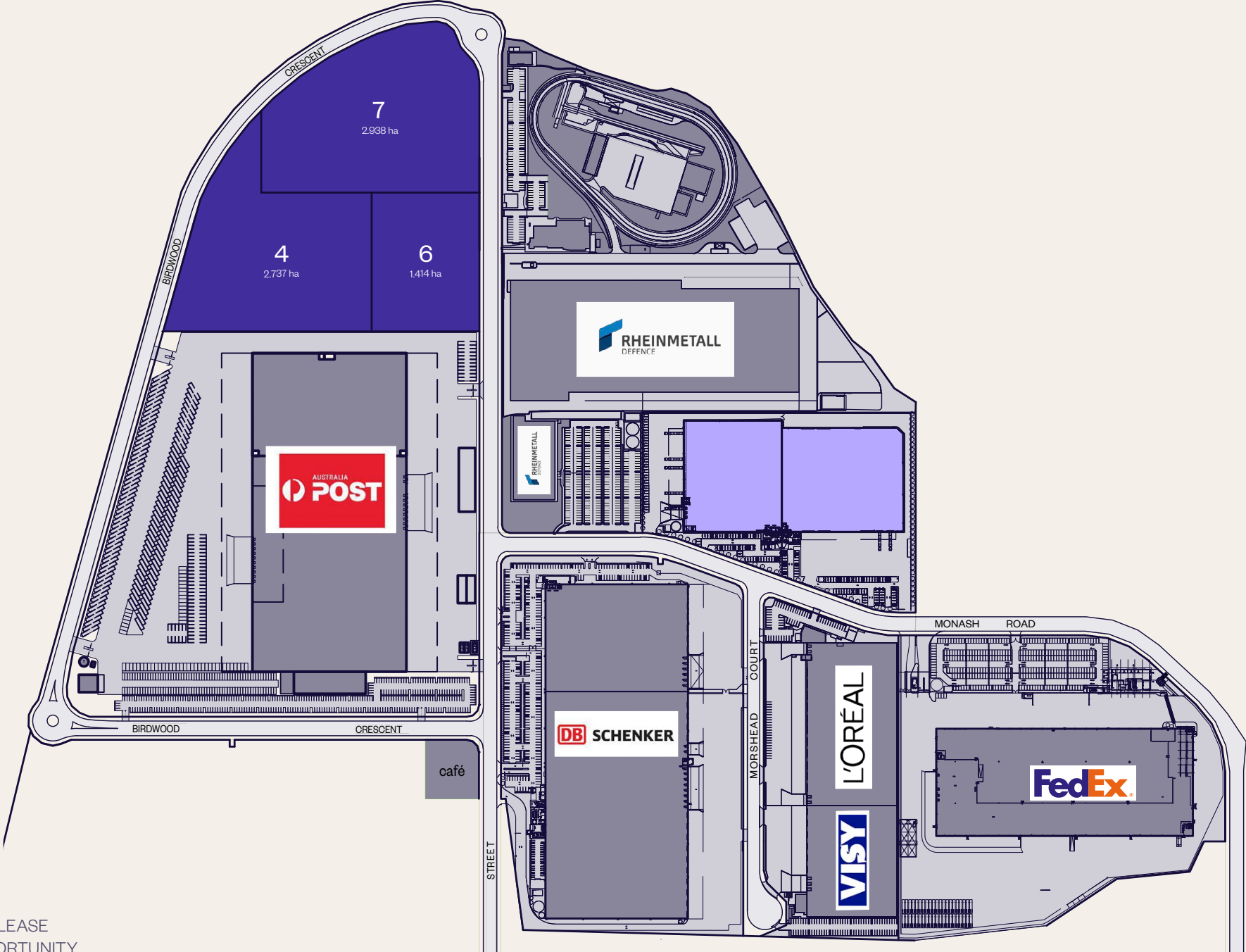


↘
Anytime Fitness



↘
Orion Springfield Central

MASTERPLAN NORTH SECTION



■ AVAILABLE FOR LEASE
■ PRE-LEASE OPPORTUNITY

MASTERPLAN SOUTH SECTION

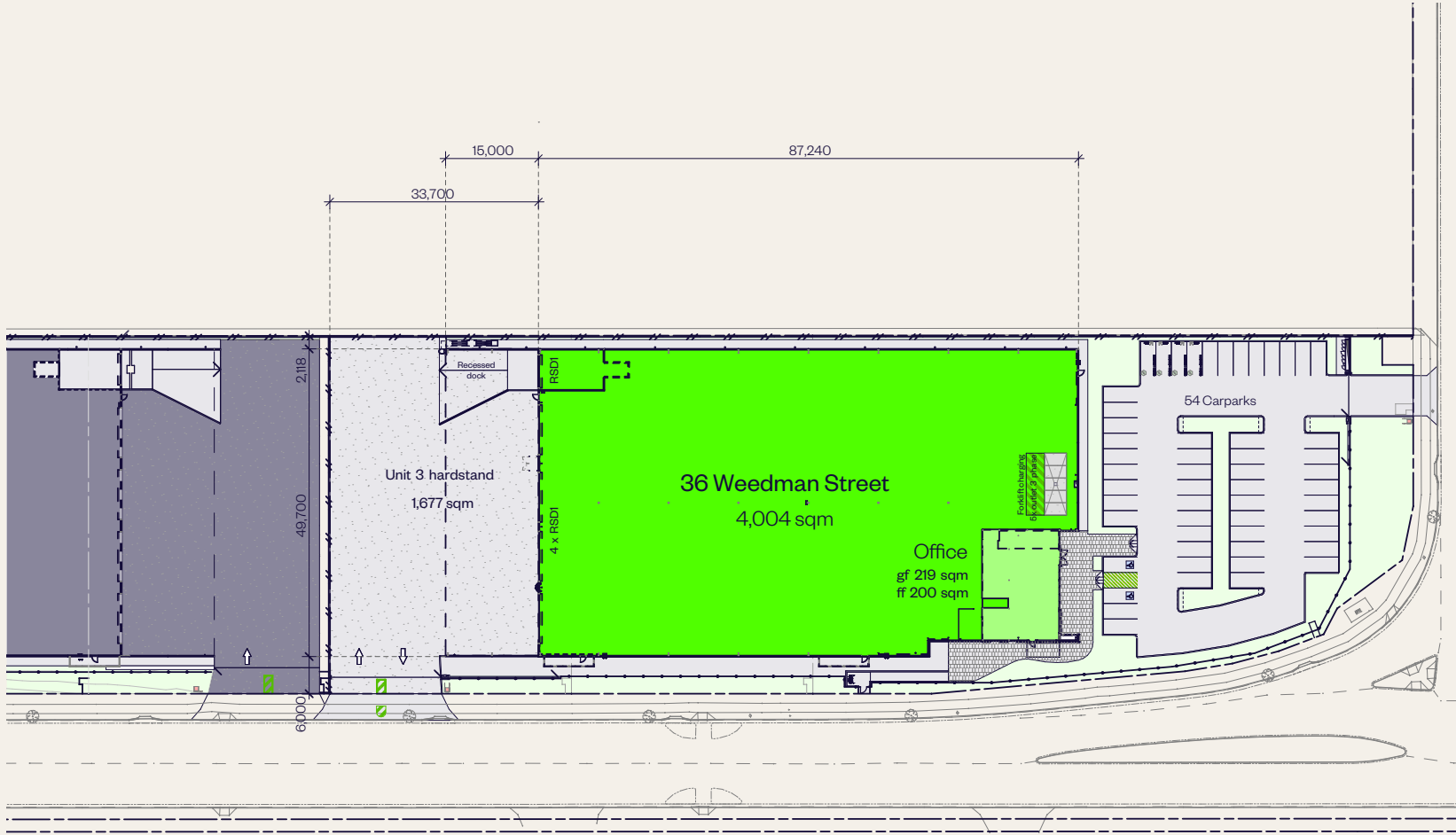


 SUBJECT SITE - 36 WEEDMAN STREET
 PRE-LEASE OPPORTUNITY

WAREHOUSE PLAN

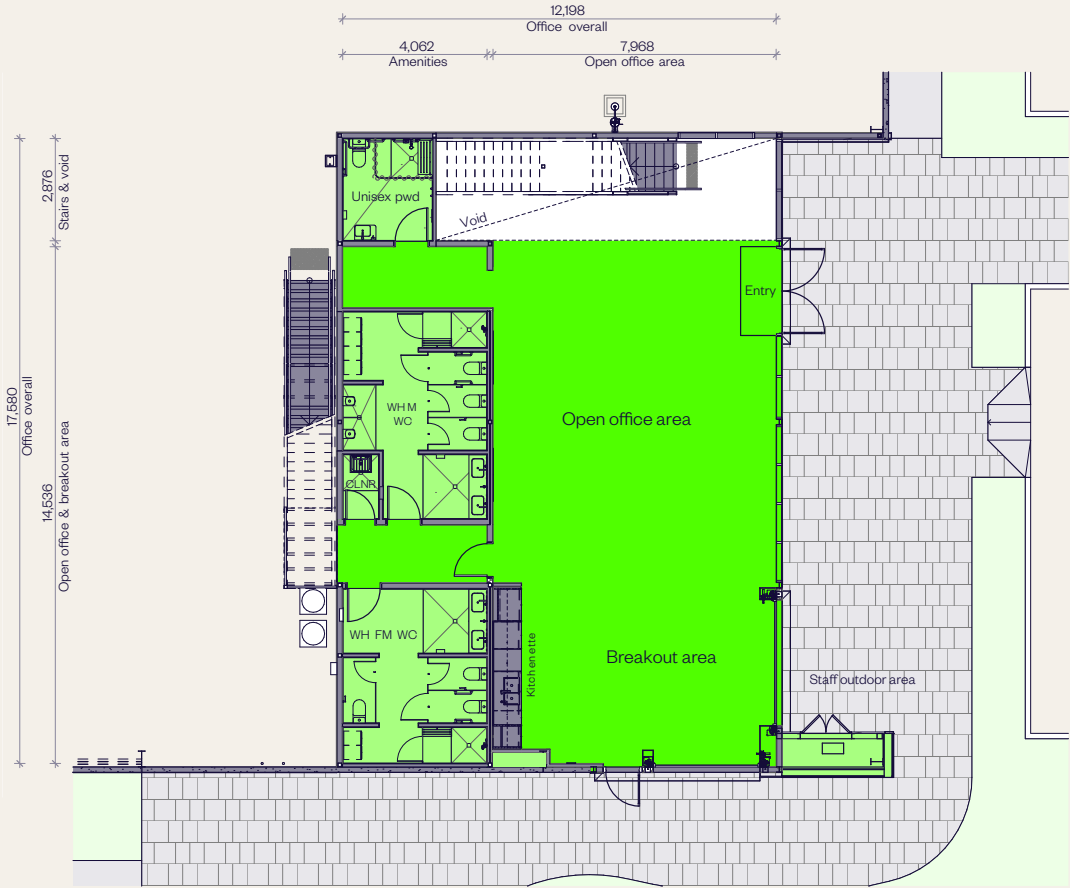
36 Weedman Street,
Redbank Motorway Estate

AREA SCHEDULE	SQM
Warehouse	4,004
Office and amenities	419
Total GLA	4,423
Car parking	54 spaces



OFFICE PLAN

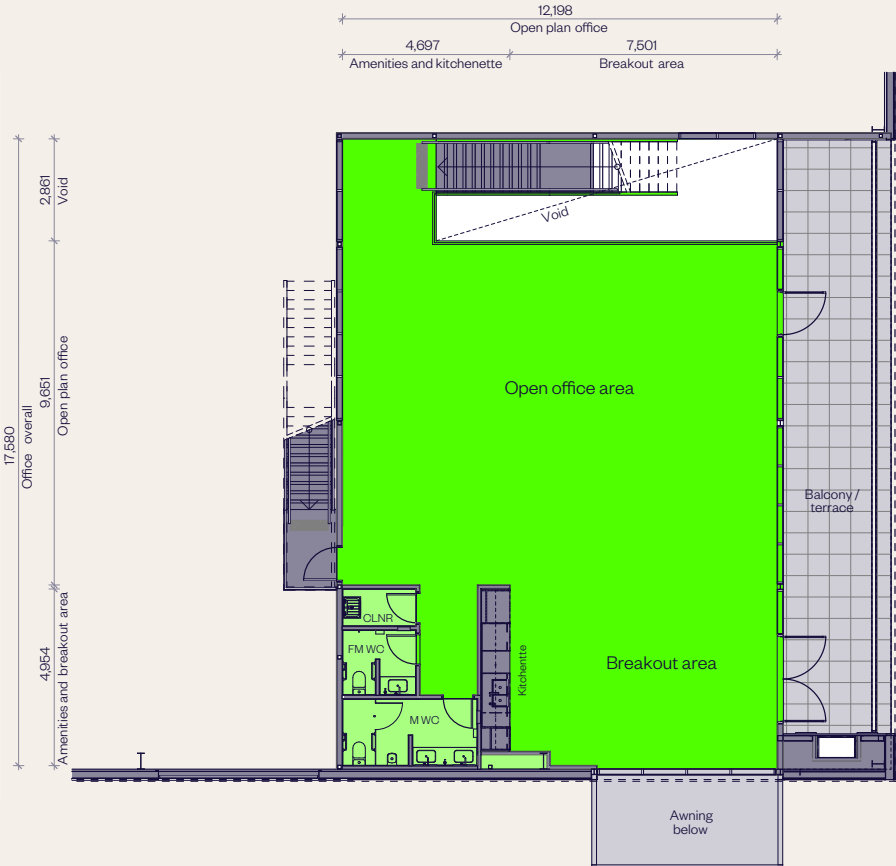
36 Weedman Street,
Redbank Motorway Estate



Ground floor

AREA SCHEDULE	SQM
Ground floor	219
First floor	200
Total building area	419

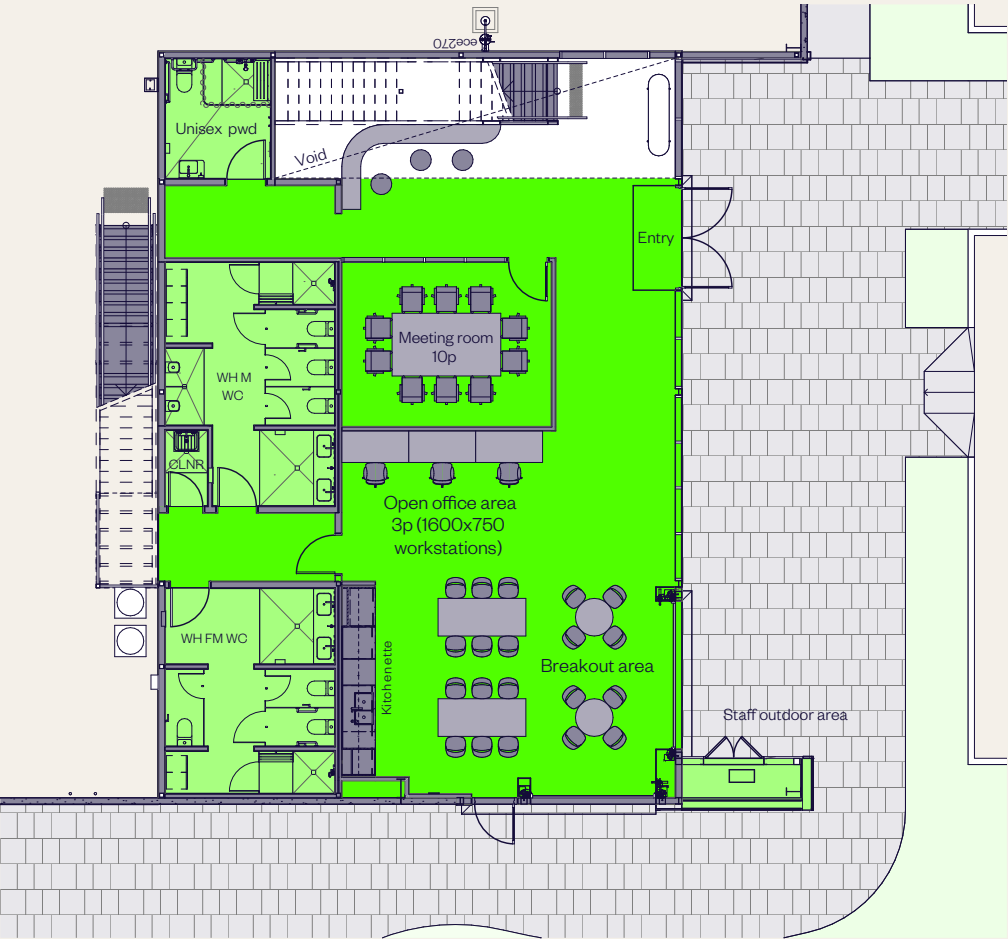
■ FOR LEASE



First floor

INDICATIVE LOW DENSITY FITOUT PLAN

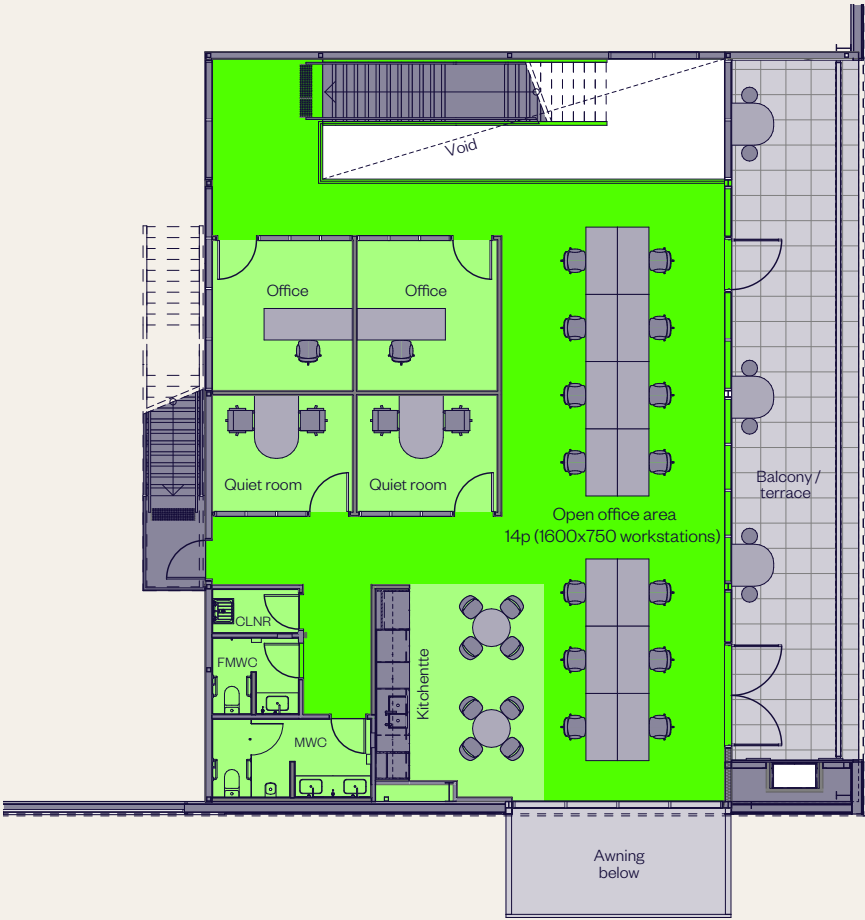
36 Weedman Street,
Redbank Motorway Estate



Ground floor

WORKSTATIONS	QTY
Ground floor	3
First floor	14
Total Workstations	17

■ FOR LEASE



First floor

INDICATIVE HIGH DENSITY FITOUT PLAN

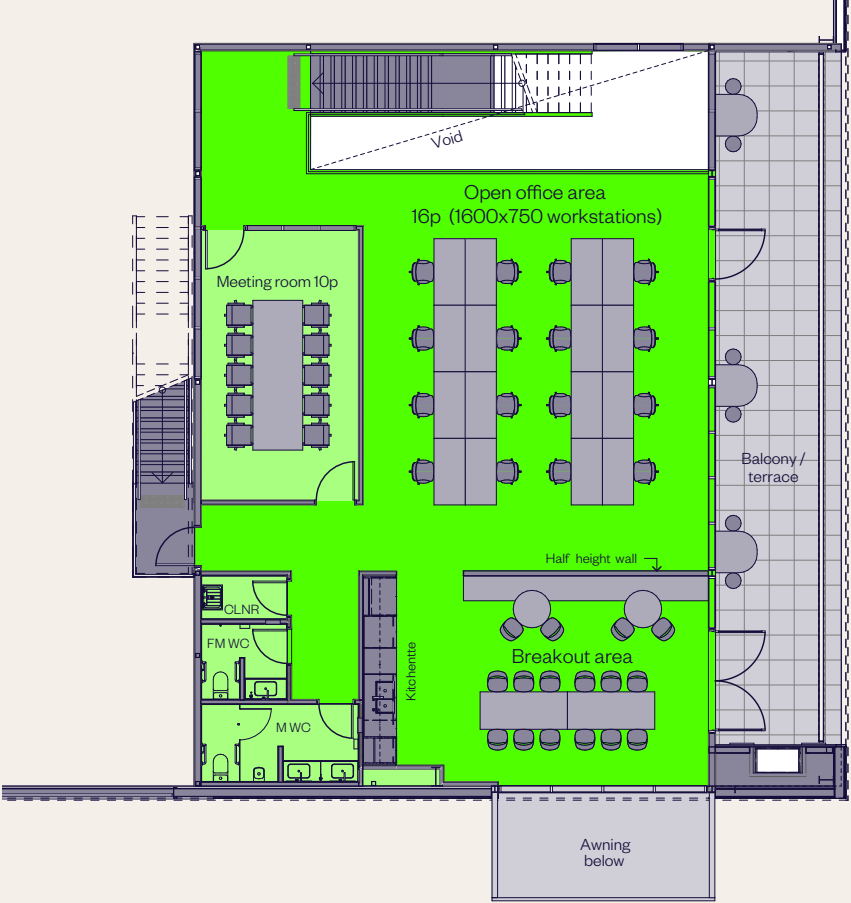
36 Weedman Street,
Redbank Motorway Estate



Ground floor

WORKSTATIONS	QTY
Ground floor	12
First floor	16
Total Workstations	28

■ FOR LEASE

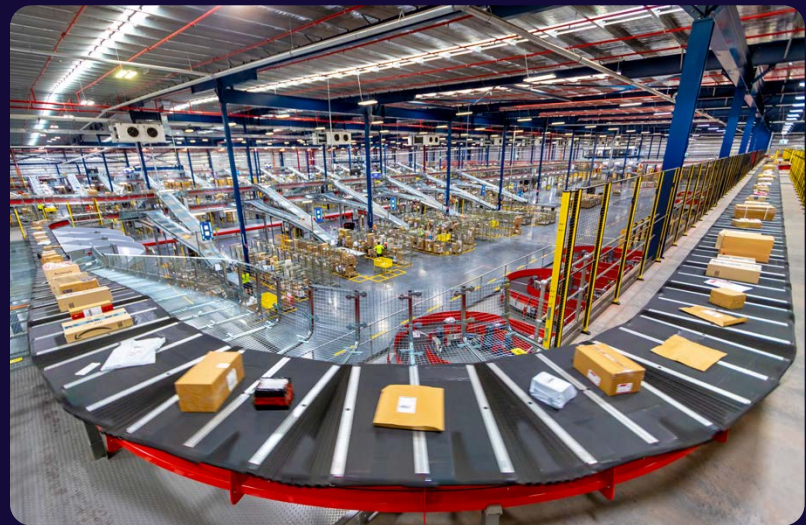


First floor

REDBANK MOTORWAY ESTATE PROVEN TRACK RECORD

AUSTRALIA POST

- + Largest parcel facility and delivery centre for Australia Post in Australia, capable of sorting 700,000 parcels per day
- + Build time: 11 months.



49,260 SQM

REDBANK MOTORWAY ESTATE
PROVEN TRACK RECORD



COLES

- + Air-conditioned warehouse up to 36m high to accommodate Coles's 30m high Automated Storage and Retrieval System
- + Dedicated dangerous goods storage
- + 8MVA dedicated power supply with dual feeds
- + 3.5MW rooftop solar PV system
- + 180,000 litres of rainwater collection with UV filtration system for amenity and irrigation
- + Dual fire rated communications rooms with gas fire suppression system.

[VIEW CASE STUDY →](#)

66,067 SQM

BAPCOR

- + 1.8MW solar array system
- + 14.6m ridge height
- + 26m wide awning.

[VIEW CASE STUDY →](#)

44,473 SQM



REDBANK MOTORWAY ESTATE PROVEN TRACK RECORD



CHEP

- + 8,220 sqm
- + 450kw solar array
- + 4 EV charging points
- + 26,147 sqm hardstand capable to store 150,000 pallets
- + Targeting carbon neutral certification
- + Fully automated pallet repair centre.



DB SCHENKER

- + 46,995 sqm
- + Tapa security standard compliant facility
- + Back up power generator
- + Flexible inter-tenancy wall to provide for future growth.



FEDEX

- + 27,866 sqm
- + Fully automated sortation system integrated with base building
- + Maintenance, truck wash and refuelling facilities on-site
- + Customer collections facility
- + Permanent back up generator.



LAWRENCE & HANSON

- + 11,794 sqm
- + 300kw solar array
- + 8 EV charging points
- + Targeting carbon neutral certification.



QUANTUM SYSTEMS

- + 2,118 sqm
- + 50kw solar array
- + Exposed ground floor ceilings and feature lighting
- + 4 EV charging points
- + Targeting carbon neutral certification.



L'ORÉAL

- + 14,533 sqm
- + Dedicated 365kw solar array system
- + Targeting a 4 Star Green Star Equivalent rating
- + Dangerous Goods Storage.

GOODMAN GLOBAL OVERVIEW

We invest in business parks, office parks, industrial estates, warehouses and distribution centres, residential and data centres. We offer a range of listed and unlisted property funds, giving investors access to our specialist services and property.

As at 31 December 2025

\$87.4BN

Total portfolio

27.8M

Sqm of business space
(approx.)

1,700+

Customer base
(approx.)

445

Number of properties

15

Total number of countries
operating in



1,000

Dedicated property
professionals
(approx.)

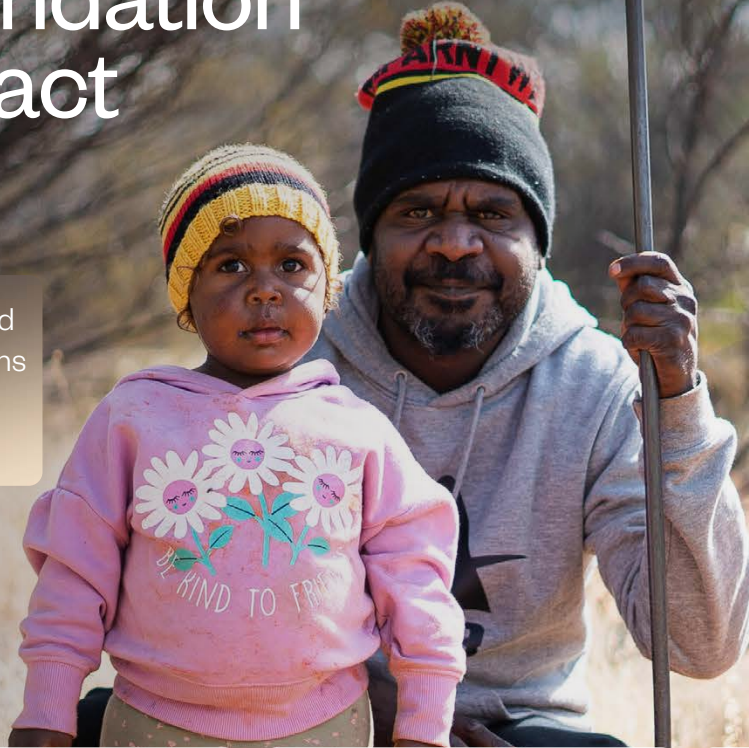


26

Offices worldwide

Goodman Foundation – creating impact in Queensland

In FY25, the Goodman Foundation provided **\$16.7 million** to **97** community organisations globally, working with over **38** strategic charity partners across **15** countries.



Focused local partnerships in Queensland

In Queensland, Goodman supports organisations delivering practical, on-the-ground outcomes across education, food relief, First Nations communities and essential supplies.

Clontarf Foundation

Across Queensland in FY25, **24 Clontarf academies** helped **2,814 students** stay engaged in school and complete their secondary studies.

Goodman has committed to support the next academy in Logan, with seed funding waiting approval.



clontarf
foundation

FareShare / Meals for the Mob

In FY25 the Meals for the Mob program enabled the distribution of **82,200 meals** to disaster-impacted regions in Queensland and Northern New South Wales.



OzHarvest

OzHarvest rescues quality surplus food and redistributes it to charities supporting people experiencing food insecurity.

In Queensland in FY25, Goodman's support helped rescue **94,796 kg** of food, delivering **215,134 meals** to **16 community organisations** across the state.



Thread Together

Thread Together provides brand-new clothing to women and children fleeing domestic violence through curated Wardrobe Capsules installed directly within crisis shelters.

Across Queensland in FY25, Goodman funded **49 installations of curated wardrobes in crisis centres**, with Mobile Wardrobe Vans operating in Indooroopilly and the Gold Coast to extend reach across the community.



CONTACT US



Daniel Brekan
General Manager, Queensland Development

T. 07 3040 3302
M. 0414 787 072
daniel.brekan@goodman.com

James Lynch
Development Manager

T. 07 3040 3304
M. 0423 532 755
james.lynch@goodman.com

Grace Ruffle
Project Manager

T. 07 3999 8930
M. 0422 099 919
grace.ruffle@goodman.com

Goodman
Brisbane Gate Industrial Park
Unit 7
370 Nudgee Road
Hendra QLD 4011
T. 07 3040 3300

[VIEW THIS PROPERTY ONLINE →](#)

[goodman.com/au](https://www.goodman.com/au)

