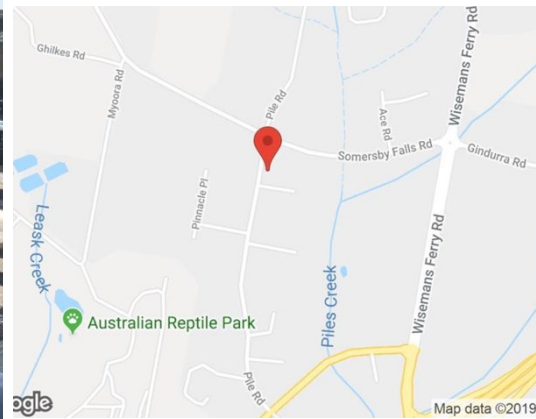
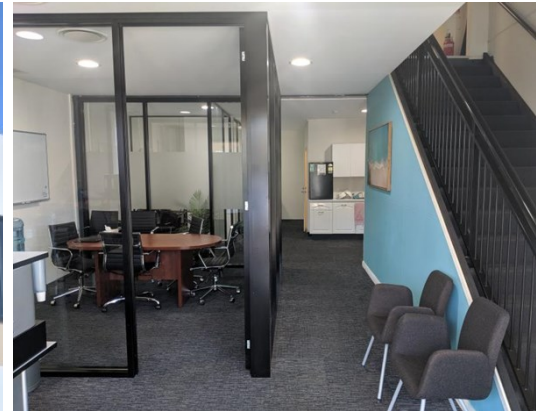


# For Lease



Unit 4  
**1 Sailfind Place SOMERSBY**  
*141sqm Quality Somersby Office Suite*

**Area m<sup>2</sup>:** 141  
**Rent \$/m<sup>2</sup>:** \$177  
**Rent pa:** \$25,000 Per Annum Net + GST  
**Net/Gross:** Net  
**GST:** Exclusive  
**Parking:** 2  
**Outgoings:**  
**Contact:**

**Daniel Mason**  
0403 889 530  
daniel@chapmanfrazer.com.au

**Location:**

Located within the "Somersby Hub" on the corner of Sailfind Place and Pile Road in Somersby, offering easy access back to the M1 Motorway, connecting to Sydney and Newcastle, or a short trip down Kariong hill to Gosford.

**Description:**

This property offers an attractive facade with a glazed frontage, leading to a welcoming reception, glass partitioned meeting rooms and amenities on the ground floor.

Stairs lead to the first floor office space, which is open plan, light filled and air-conditioned, providing a great working environment.

The suite has a disability toilet on the ground floor, plus kitchenette, and storage space, as well as being fully air-conditioned.

This is a well presented, versatile space suitable for a range of applications. Call today for an inspection!

- On-site parking
- Quality office fit out
- Ducted air-conditioning