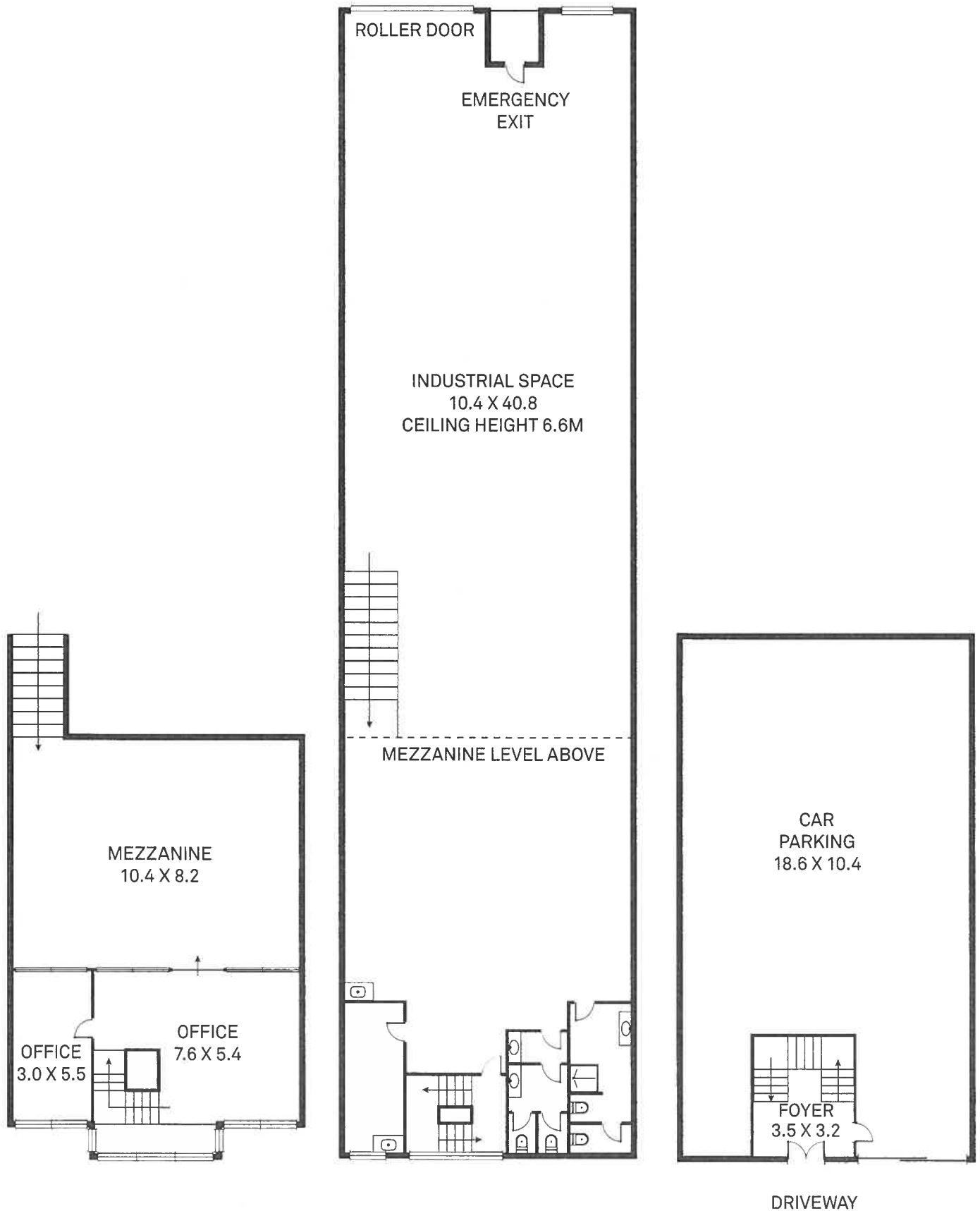


REAR LANE ACCESS



INDUSTRIAL SPACE: 420 SQM APPROXIMATELY  
MEZZANINE LEVEL: 149 SQM APPROXIMATELY  
CAR PARKING: 193 SQM APPROXIMATELY

NOTE: Every precaution has been taken to verify the accuracy of the above details. However, prospective purchasers are advised to make their own enquiries.

13-15 Gerald Street, Marrickville

