

144 Centaur Street REVESBY HEIGHTS

Information Memorandum | For Sale



25
Years





Contents



Executive Summary	4
Key Features	7
The Asset	
Description	9
Outgoings	9
Tenancy Schedule	9
Location	12
Planning Details	16-17
Key Planning Contacts	16
Planning Controls	16
Comparable Sales	20
Sales Information	
Contract for Sale	21
Open for Inspection	21
Contact Details	21
Disclaimer	23

Executive Summary

Address	144 Centaur Street, Revesby Heights NSW 2212
Legal Description	Lot 37 DP26005
Property Type	Retail Shop
Building Area*	120m ²
Land Area*	297m ²
Parking*	On Street, Rear-Lane & Off-Street Parking
LGA	Canterbury-Bankstown Council
Zoning	E1: Local Centre under Canterbury-Bankstown Local Environmental Plan 2023 Amendment No 5
Height of Building	11m
Floor Space Ratio	1.5:1
Occupancy	Vacant
Outgoings*	\$2,384.40 PA
Open for Inspection	Private appointment with agent
Sale Price	\$1,200,000.00 + GST

Selling Agents

Aaron Johnston

Sales & Leasing Executive
M: 0474 515 567
T: 02 9709 6111
aaronj@commercial.net.au

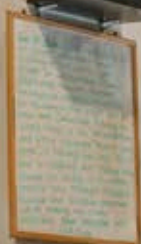
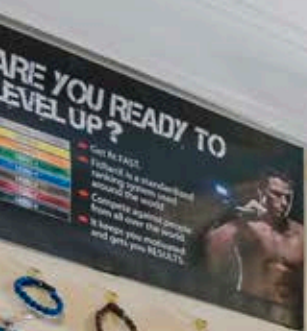
Matthew McHardy

Managing Director
M: 0450 440 799
T: 02 9709 6111
matthewm@commercial.net.au

*Approximate



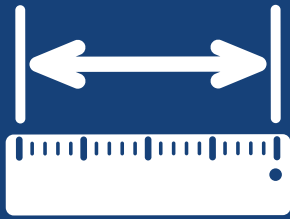




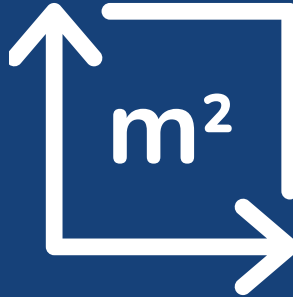
You're Not Just Training Clients, You're Changing



Key Features



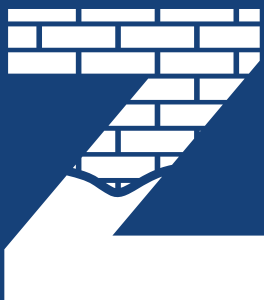
Building Size
120 m²*



Land Size
297 m²*



DA Approved:
Personal Training Studio



Zoning is
E1: Local Centre



Ample On Street, Rear Lane
& Off Street Car Spaces



Quiet, Suburban Setting
with Great Visibility



The Asset












Description

REACH NEW HEIGHTS!

A rare opportunity in the heart of Revesby Heights, this freestanding retail property offers versatility, accessibility, and scope for future growth. Set on a 297m²* parcel with 120m²* of internal space plus extended outdoor areas, the site is DA approved for a personal training studio and loaded with modern upgrades. Zoned E1 Local Centre, with a Floor Space Ratio of 1.5:1 and a height limit of 11 metres, the site also holds excellent development potential with possibilities to add further levels (STCA).

With a 15+ year history of successful business operation, the property is perfectly suited for fitness, gym, wellness, medical, consulting or retail use. The current setup supports immediate occupancy, while the zoning and planning controls allow flexibility for future repositioning or expansion.

-  Building Size: 120m²* + enclosed outdoor extensions
-  Land Size: 297m²*
-  DA Approved: Personal Training Studio
-  Zoning: E1 Local Centre
-  Floor Space Ratio: 1.5:1
-  Height Limit: 11 metres
-  3 onsite car spaces + rear lane access.
-  Ample on-street parking nearby
-  Vacant possession – occupy or lease out

WHY YOU WILL LOVE IT!

- ✓ Fully air conditioned throughout
- ✓ New roof installed (Aug 2021)
- ✓ New floorboards (Dec 2021)
- ✓ Enclosed pergola and outdoor gazebo for added usable space
- ✓ Separate male & female toilets and showers
- ✓ Rear heavy-duty security door
- ✓ Full video surveillance – 24/7 phone access
- ✓ Attic roof storage with loft ladder and lighting
- ✓ NBN connected – strong reception area
- ✓ High ceilings
- ✓ 1-minute walk to Neptune Park – ideal for additional outdoor fitness use
- ✓ Long-standing, friendly relationships with neighbours and locals
- ✓ Proven site with over 15 years of successful trading

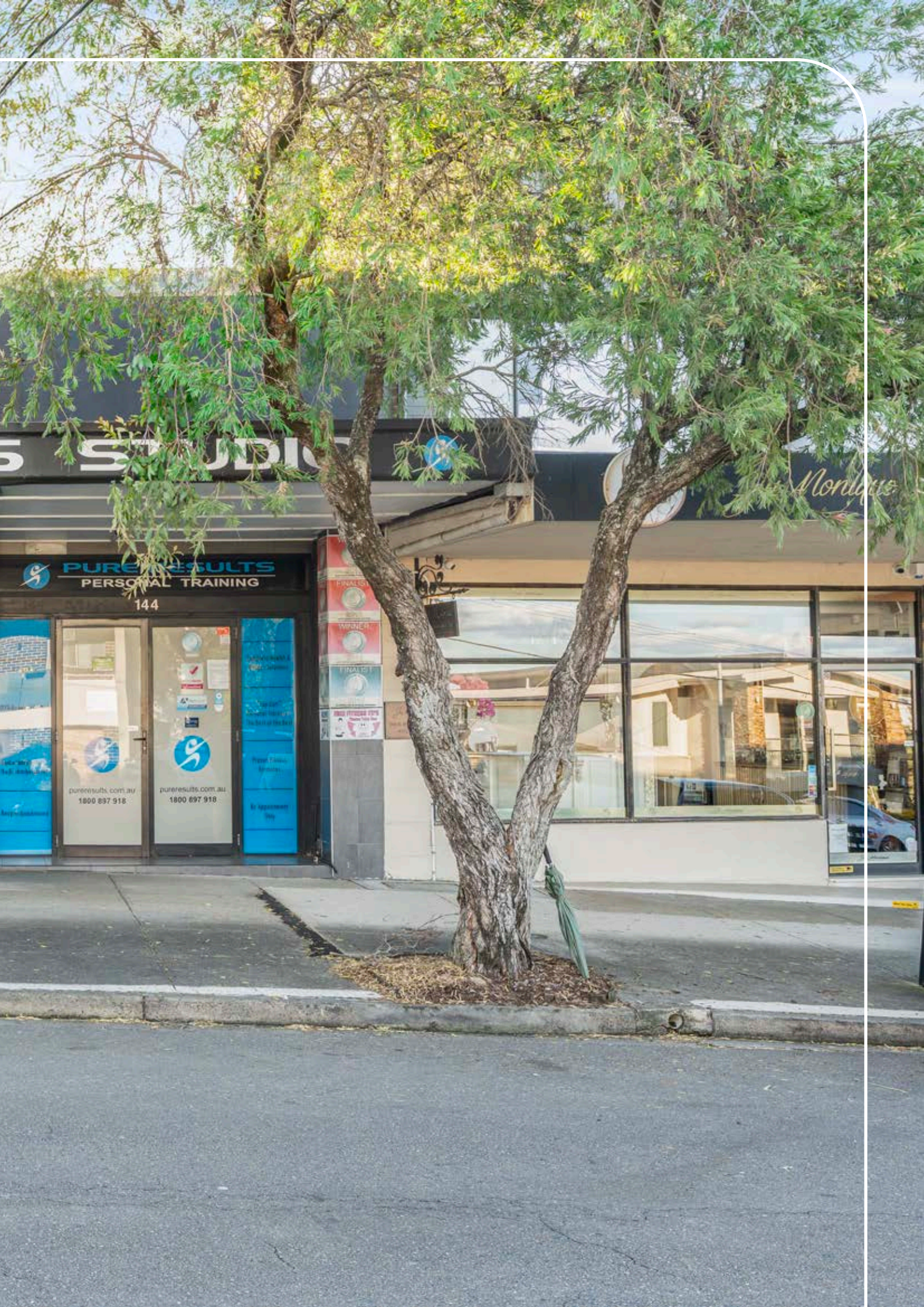
Whether you're an owner occupier looking for a ready-to-go commercial space, or an investor wanting to secure an adaptable retail holding with future potential, 144 Centaur Street delivers on all fronts.

Outgoings

Council Rates*	\$1,794.00 PA
Water Rates*	\$590.40 PA
TOTAL*	\$2,384.40 PA

*Approximate





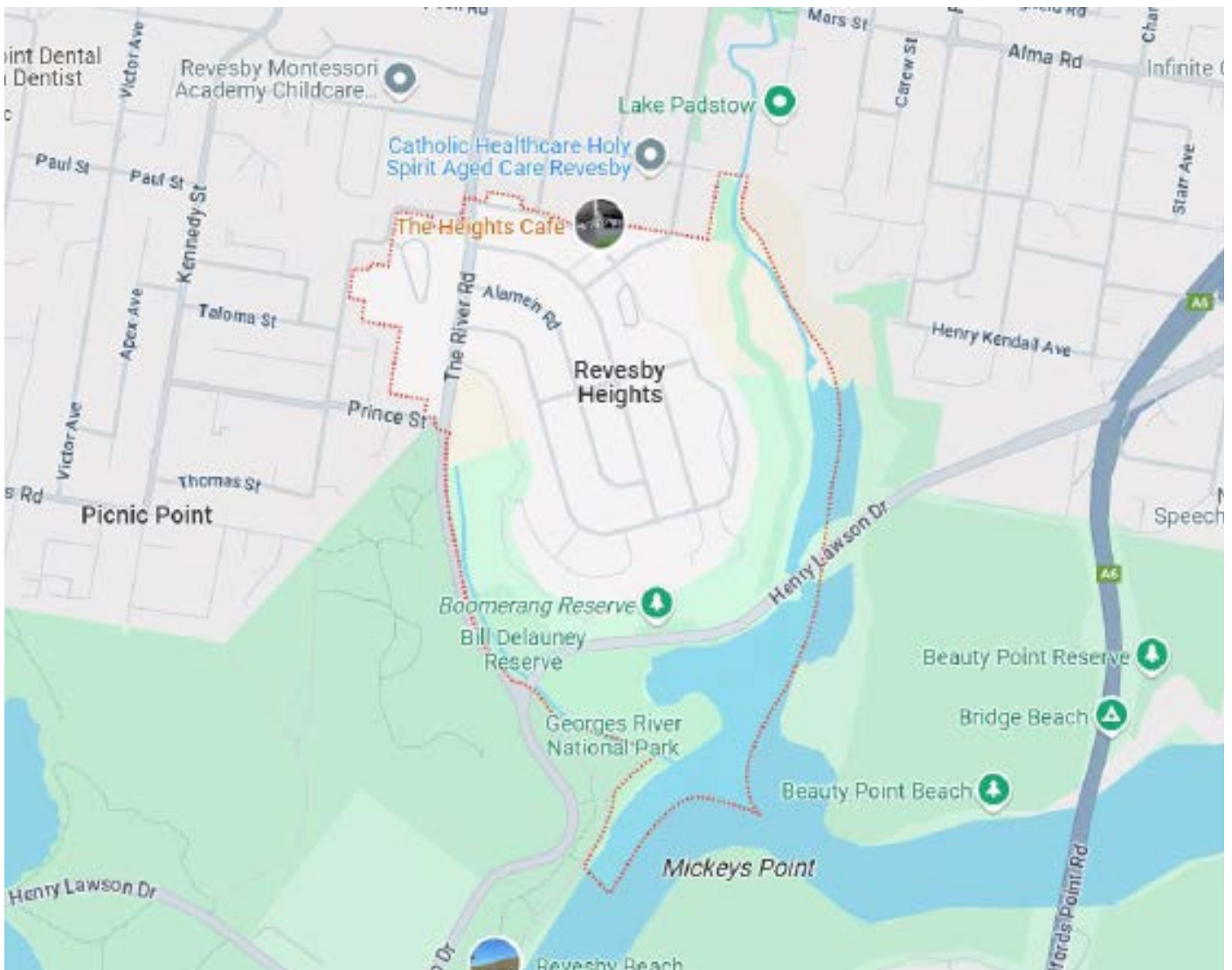
Location

Revesby Heights is a peaceful and elevated suburb located approximately 23 kilometres southwest of Sydney's central business district, within the City of Canterbury-Bankstown. Known for its leafy outlooks and elevated terrain, the suburb is perched along the Georges River escarpment, offering sweeping district and water views from many vantage points. Revesby Heights is largely residential, characterised by quiet streets, established homes, and newer modern builds that continue to shape its evolving streetscape.

The suburb has a strong family-friendly atmosphere, supported by local schools, playgrounds, and green open spaces. One of the key natural features of the area is the nearby Georges River National Park, which provides residents with access to bushwalking trails, picnic areas, and scenic lookouts. The combination of riverside proximity and natural bushland gives Revesby Heights a distinct sense of seclusion and tranquility while still being conveniently located close to neighbouring commercial centres.

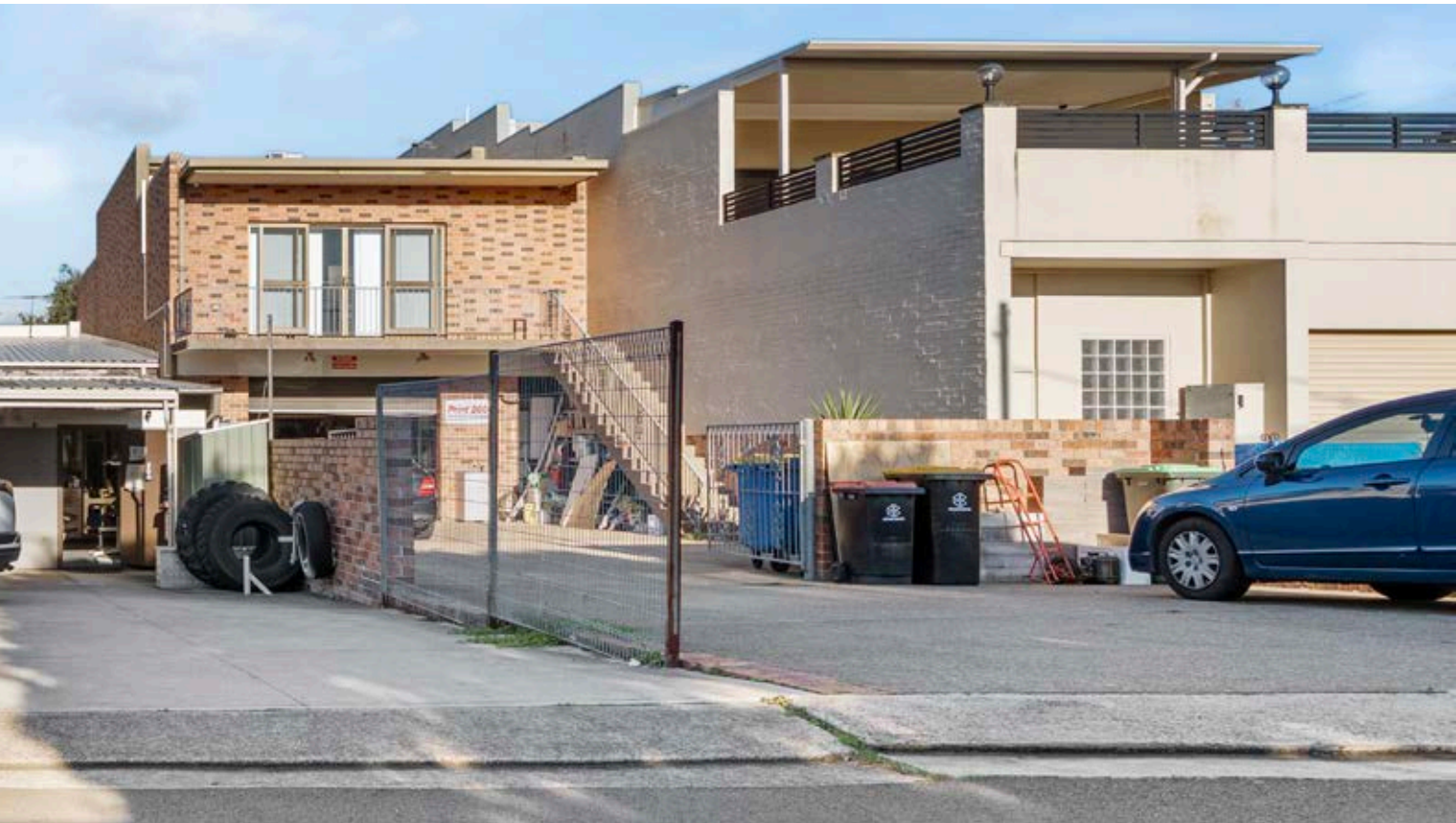
While Revesby Heights itself maintains a low-density, residential character with limited commercial development, it benefits greatly from nearby Revesby and Padstow. These surrounding suburbs offer shopping centres, supermarkets, cafés, restaurants, medical services, and direct train connections to Sydney's CBD via the T8 Airport & South Line. This proximity allows residents to enjoy a quiet village lifestyle without sacrificing accessibility or convenience.

The suburb is well-connected by local roads and public transport services, and its elevated topography often attracts buyers looking for privacy, scenic outlooks, and a more laid-back lifestyle. Revesby Heights continues to appeal to families, retirees, and professionals who value a balance between natural beauty, residential comfort, and easy access to Sydney's broader metropolitan area.









Planning Details

E1: Local Centre under Canterbury-Bankstown Local Environmental Plan 2023 Amendment No 5

1 Objectives of zone

- To provide a range of retail, business and community uses that serve the needs of people who live in, work in or visit the area.
- To encourage investment in local commercial development that generates employment opportunities and economic growth.
- To enable residential development that contributes to a vibrant and active local centre and is consistent with the Council's strategic planning for residential development in the area.
- To encourage business, retail, community and other non-residential land uses on the ground floor of buildings.
- To encourage employment opportunities in accessible locations.
- To maximise public transport patronage and encourage walking and cycling.
- To promote a high standard of urban design and local amenity.
- To ensure that new development provides diverse and active street frontages to attract pedestrian traffic and to contribute to vibrant, diverse and functional streets and public spaces.

2 Permitted without consent

Home occupations

3 Permitted with consent

Amusement centres; Boarding houses; Building identification signs; Business identification signs; Centre-based child care facilities; Commercial premises; Community facilities; Entertainment facilities; Function centres; Home industries; Hotel or motel accommodation; Information and education facilities; Local distribution premises; Medical centres; Oyster aquaculture; Places of public worship; Public administration buildings; Recreation facilities (indoor); Respite day care centres; Service stations; Shop top housing; Tank-based aquaculture; Veterinary hospitals; Any other development not specified in item 2 or 4

4 Prohibited

Agriculture; Air transport facilities; Airstrips; Animal boarding or training establishments; Biosolids treatment facilities; Boat building and repair facilities; Boat launching ramps; Boat sheds; Camping grounds; Caravan parks; Cemeteries; Charter and tourism boating facilities; Crematoria; Depots; Eco-tourist facilities; Electricity generating works; Exhibition homes; Exhibition villages; Extractive industries; Farm buildings; Forestry; Freight transport facilities; Heavy industrial storage establishments; Highway service centres; Home occupations (sex services); Industrial retail outlets; Industrial training facilities; Industries; Jetties; Marinas; Mooring pens; Moorings; Mortuaries; Open cut mining; Port facilities; Residential accommodation; Resource recovery facilities; Rural industries; Sewage treatment plants; Sex services premises; Signage; Storage premises; Transport depots; Truck depots; Vehicle body repair workshops; Warehouse and distribution centres; Waste disposal facilities; Water recreation structures; Water recycling facilities; Wharf or boating facilities; Wholesale supplies

Key Planning Contacts

COUNCIL: Canterbury Bankstown City Council

TELEPHONE: 02 9707 9000

EMAIL: council@cbc.city.nsw.gov.au

WEBSITE: <https://www.cbc.city.nsw.gov.au/>

POSTAL ADDRESS:

PO Box 8
Bankstown NSW 1885

STREET ADDRESS:

66-72 Rickard Road
Bankstown NSW 2200

Planning Controls



Zoning

Zone E1: Local Centre



Height of Building

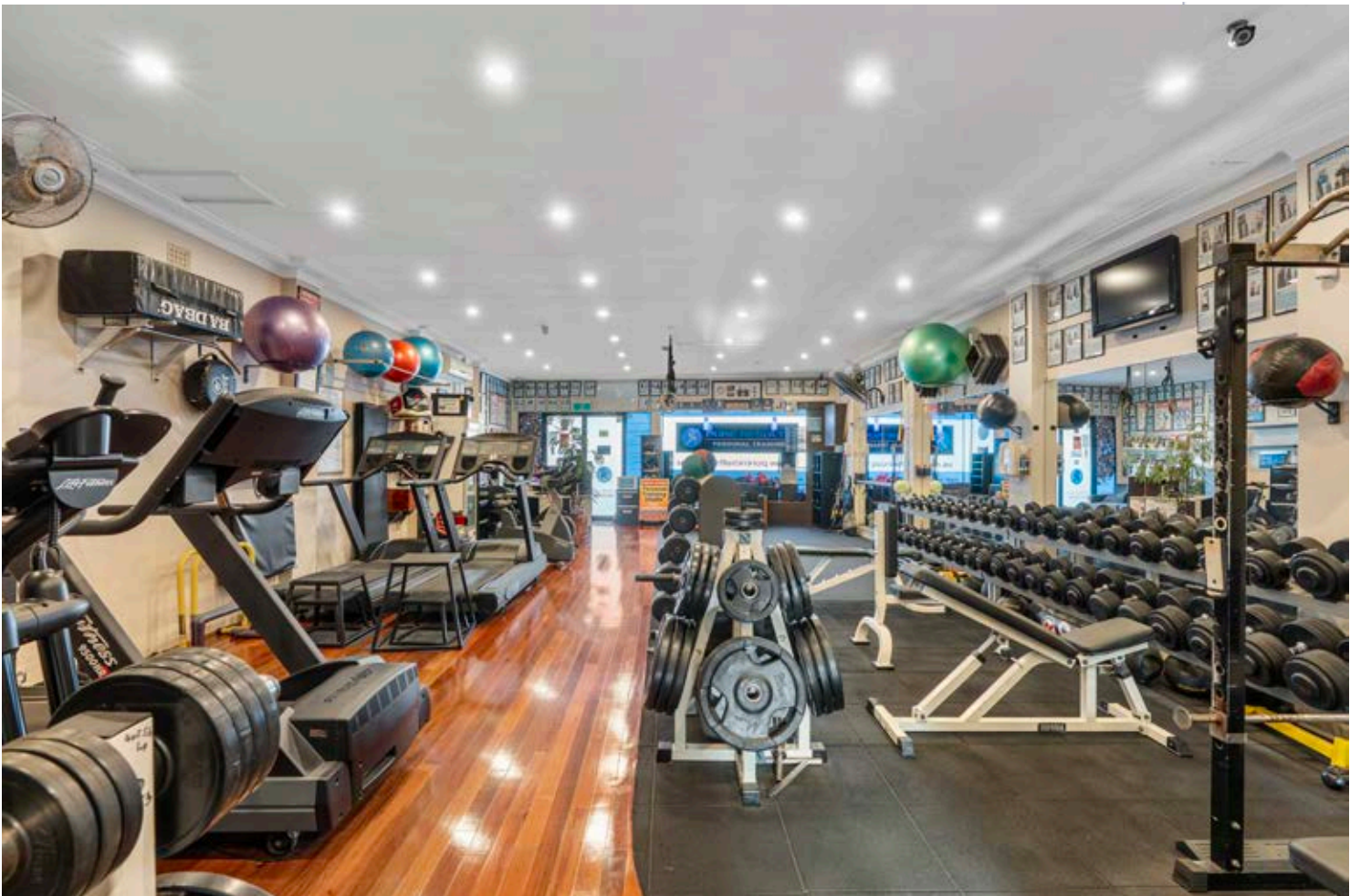
11 m



Floor Space Ratio

1.5:1





Comparable Sales

125 Kennedy Street, Picnic Point

SALE PRICE: \$1,525,000.00

SALE DATE: April 2025

BUILDING AREA: 180 m²

LAND AREA: 202 m²

RATE ON LAND: \$7,549 Per m²

ZONING: E1: Local Centre



159 Tower Street, Panania

SALE PRICE: \$1,400,000.00

SALE DATE: August 2024

BUILDING AREA: 224 m²

LAND AREA: 224 m²

RATE ON LAND: \$6,250 Per m²

ZONING: E1: Local Centre



1026A Forest Road, Lugarno

SALE PRICE: \$1,220,000.00

SALE DATE: November 2023

BUILDING AREA: 202 m²

LAND AREA: 202 m²

RATE ON LAND: \$6,039 Per m²

ZONING: E1: Local Centre



77 The River Road, Revesby

SALE PRICE: \$815,000.00 + GST

SALE DATE: April 2024

BUILDING AREA: 83 m²

LAND AREA: 285 m²

RATE ON LAND: \$2,859 Per m²

ZONING: E1: Local Centre



Sales Information



Sale Price

\$1,200,000.00 + GST

Contract for Sale

Copies of the sale contract are available by contacting the selling agents.

Open for Inspection

Private appointment with agent

Contact

Aaron Johnston

Sales & Leasing Executive

M: 0474 515 567

T: 02 9709 6111

aaronj@commercial.net.au

Matthew McHardy

Managing Director

M: 0450 440 799

T: 02 9709 6111

matthewm@commercial.net.au



FITNESS STUDIO

Results Guaranteed!

24 HOUR FREE
Recorded Message



PURE RESULTS
PERSONAL TRAINING

www.pureresults.com.au

weight loss body sculpting improve fitle Eme
body toning re-shaping muscle cviete



PURE RESULTS
PERSONAL TRAINING

144



pureresults.com.au
1800 807 840

pureresults.com.au
1800 897 918



Disclaimer

This document has been prepared by Commercial Property Group for its client or potential client. It is provided on a confidential basis and is not to be distributed or reproduced in whole or in part without the prior written consent of Commercial Property Group. The information contained in this document is intended as a guide only, does not constitute advice and does not constitute any offer or contract, including for sale or otherwise.

All financial and marketing information, results of enquiries and assumptions and any other matters contained in this document ("information") are based on figures and information provided to Commercial Property Group by third parties and have not been independently verified by Commercial Property Group.

Users should not rely on this information as a statement or representation of fact and must make their own enquiries to verify and satisfy themselves of all aspects of such information, including without limitation, any potential or actual income, rentals, dimensions, areas and permits. If any part of the information is found to be inaccurate or incomplete, this document may not be suitable for its intended use or purpose and in such situation: Commercial Property Group should be notified and given an opportunity to correct any errors.

While the information has been prepared in good faith and with due care, no representations or warranties are made (express or implied) as to the accuracy, currency, completeness, suitability or otherwise of the information. Commercial Property Group, its officers, employees, subcontractors and agents shall not be liable (except to the extent that liability under statute or by operation of law cannot be excluded) to any person for any loss, liability, damage or expense arising directly or indirectly from or connected in any way with any use of or reliance on such information.



25
Years

Level 3, 56 Kitchener Parade
Bankstown NSW 2200
P. 02 9709 6111
W: www.commercial.net.au