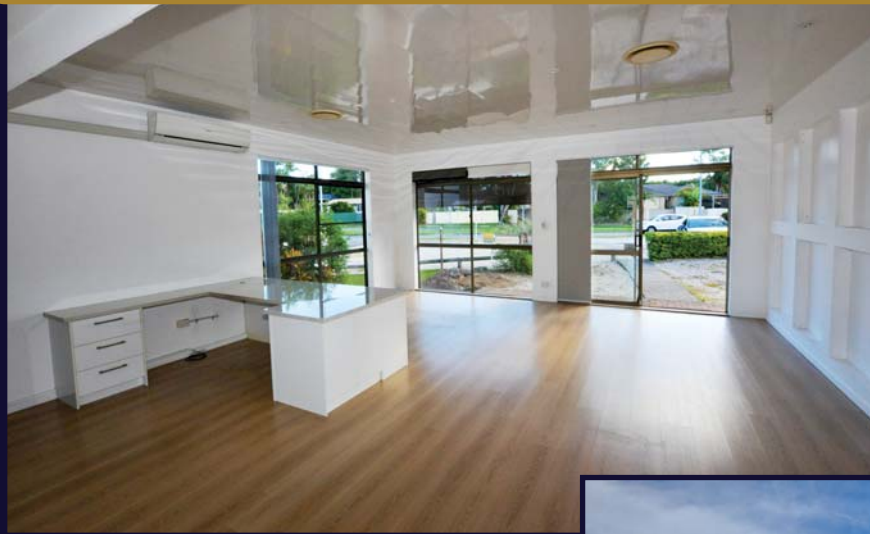


Ideal Location - Main Road Frontage Showroom/Warehouse

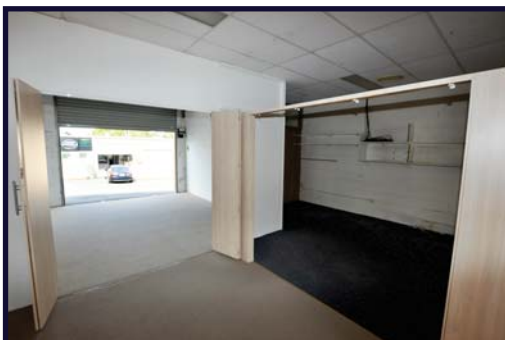


Area - 96m²

Prime Exposure

165 Currumburra Rd, Ashmore

- An extremely well presented fully fitted and airconditioned commercial lot
- The dual front road entry plus rear warehouse access allows for a multitude of uses



**Easy Access
and
Parking**



For Lease - Only \$2,200/month*

view more at www.wrapropertyservices.com

*Plus gst



For enquiries, professional & confidential service

**Phone Wayne Robbie on
(07) 5592 3180 or 0419 772 867**

