

# Corporate Surfers Office Suite



Area - 92m<sup>2</sup>

Directly Adjoins  
Major Car Park

## Lot 8 "Parkrise" 3 Alison Street

- A north aspect, well presented office suite with natural light.
- Reception, boardroom/training, offices, and kitchen.

Close to  
Light Rail



### Other Occupants Include:

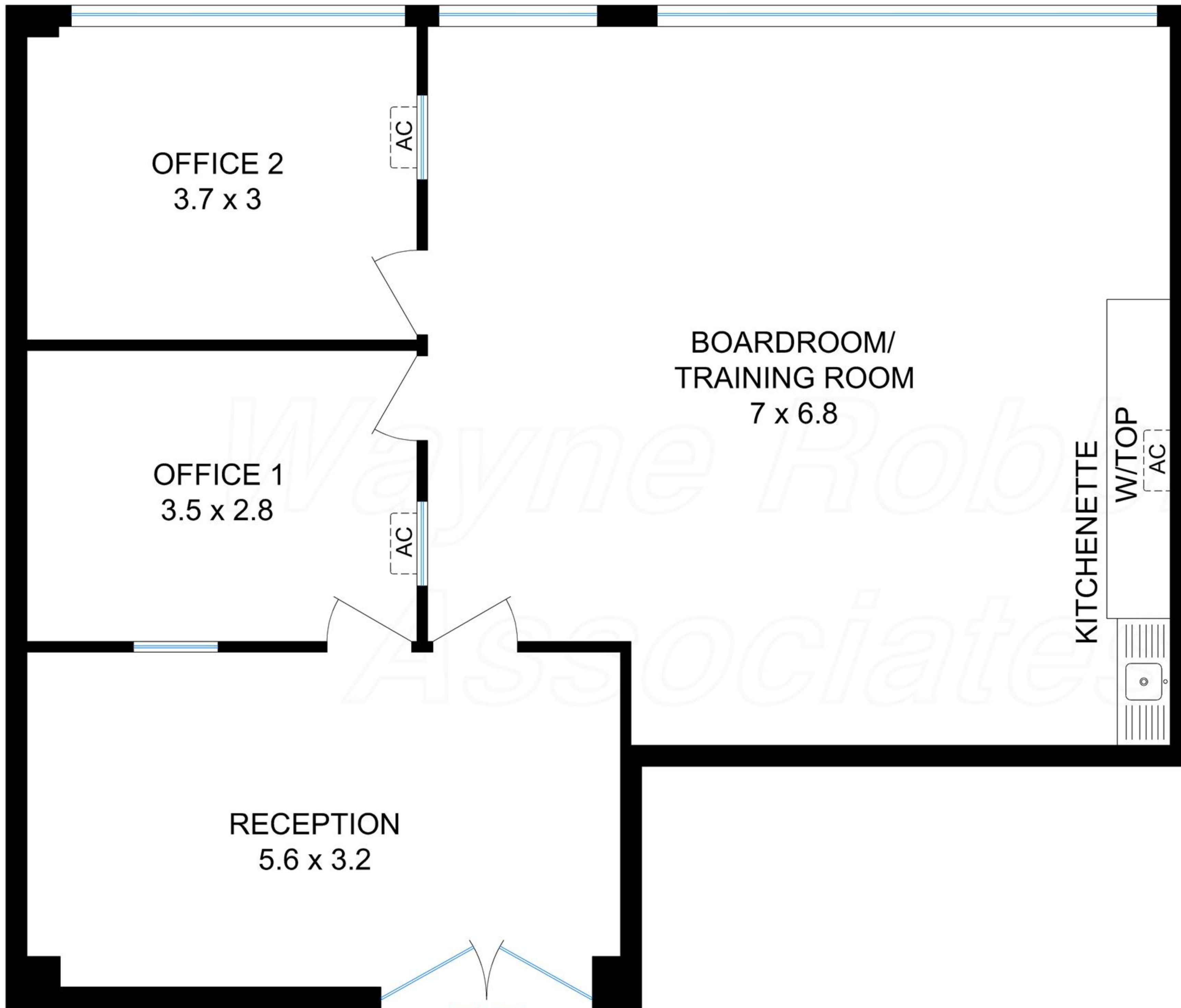
- Accountants
- Medical
- Psychologists
- Architectural

**Only \$2,000 per month + GST**

view more at [www.wrappropertieservices.com](http://www.wrappropertieservices.com)

For enquiries, professional & confidential service  
**Phone Wayne Robbie on**  
**(07) 5592 3180 or 0419 772 867**





Area 91.9m<sup>2</sup>  
(As per building unit plan)

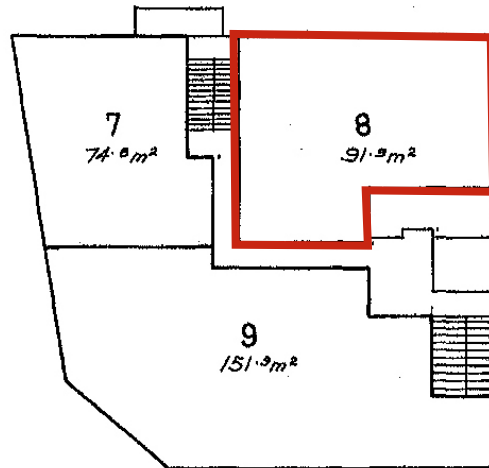
2.4m Ceilings

'Parkrise'  
Suite 8/3 Alison Street,  
Surfers Paradise



# BUILDING UNITS PLAN No. 1072

## LEVEL D



Units 7, 8, & 9  
Commercial purposes only

Scale 1:250 (Metric)

Floor Areas are approximate only.

TOSTEE CONSTRUCTION COY. PTY. LTD.  
by its duly constituted Attorney  
JOHN WILLIAM McDONALD in the  
presence of:

*Dr Campbell Solicitor*

TOSTEE CONSTRUCTION COY. PTY. LTD.  
by its duly constituted Attorney  
.....*John McDonald*.....

SIGNATURE OF REGISTERED PROPRIETOR.

*allan gree*  
SHEPHERD TOWN CLERK.

GOLD COAST CITY COUNCIL.



**"Parkise"**  
3 Alison St  
Surfers Paradise

