

ISUZU

REAL DEALS

APRIL / MAY / JUNE 2026



NEWS FEATURE

Isuzu Trucks Celebrates Historic 300,000th Sale With Delivery to Victorian Builder

Page 6

BROUGHT TO YOU BY ISUZU

Scan QR
code for an
e-version of
Real Deals



Qantas Business Rewards Trade Mate

Thanks to our partnership with Qantas Business Rewards, your business can earn Qantas Points as an Isuzu Trade Mate*. When you become an Isuzu Trade Mate member your business will earn 1 Qantas Point for every dollar you spend on eligible Isuzu Truck parts or accessories purchased from participating authorised Isuzu Dealers.

Apply now to earn Qantas Points for your business*.

*Terms and Conditions apply.

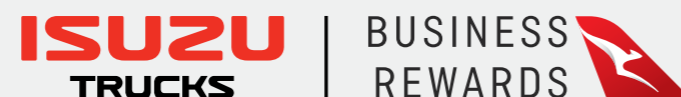


To find out more scan the code or visit www.isuzu.com.au/our-range/parts/isuzu-trade-program/



Reward your business for purchasing Isuzu Truck parts and accessories...

Your business can use Qantas Points earned on a range of rewards including booking flights, upgrades and more. Or you can transfer your business's Qantas Points to any Qantas Frequent Flyer account to use on car hire, hotels, wine or choose from over 20,000 products at the Qantas Marketplace*.



QANTAS BUSINESS REWARDS

Earn Triple Qantas Points on every Fuel Injector Kit Purchased.



4 Cylinder Injector Kits

92959369 N Series 4JJ1 Feb 2018 - Current **\$2,238.85**

Includes - 4 x 8980749093, 4 x 909566110, 4 x 8981815400, 3 x 8983452300, 1 x 8983452490, 4 x 1096390340 & 1 x 8979453380

F Series 4HK1 Oct 2007 - Dec 2015

92959370 N Series 4HK1 Feb 2005 - Jan 2018 **\$2,197.35**

Includes - 4 x 8976097887, 4 x 8980659920, 4 x 8941734120, 4 x 8980792480, 4 x 1096390340 & 1 x 8978454830

92959371 F Series - 4HK1 Jan 2016 - Current **\$2,309.90**

Includes - 4 x 8983107950, 4 x 8980659920, 4 x 8941734120, 4 x 8982681151, 4 x 1096390340 & 1 x 8978454830

6 Cylinder Injector Kits

92959372 FR/FS/FT 6HK1 Sept 07 - Sept - 2022 (Excluding DOC emission system) **\$3,309.05**

Includes - 6 x 8976097887, 6 x 8980659920, 1 x 8980797550, 6 x 8941734120, 6 x 8980792480, 6 x 1096390340 & 1 x 8943913791

92959373 FV 6HK1 Feb - 2013 - Oct 2015 & Nov 2021 - Current **3,307.80**

Includes - 6 x 8981211632, 6 x 8980659920, 1 x 8982313931, 6 x 8941734120, 6 x 8980792480, 6 x 1096390340 & 1 x 8943913791

92959374 FX/FY 6UZ1 - Dec 12 - Current Euro 5 **\$3,280.95**

Includes - 6 x 8981402493, 6 x 8980659920, 1 x 8980659930, 6 x 1096390340, 1 x 1111731180

*Members of the Qantas Business Rewards program are eligible to earn triple Qantas Points when they purchase any advertised Fuel Injector Kit from Real Deals Q2 2026 between 1 March 2026 and 30 June 2026, 3 points per dollar spent (excluding GST).

To redeem your bonus Qantas Points, please scan the QR code or go to parts.isuzu.com.au/isuzu-trade-program/real-deals-qbr-promotion and complete the purchase registration to ensure that the points are credited to your Qantas Business Rewards account.



N-SERIES
Genuine Parts

For genuine peace of mind, maintain your Isuzu N-Series Truck by using Isuzu Genuine Parts which are developed and manufactured to stringent quality standards, providing you with maximum productivity, performance, and future re-sale value. All backed by a 12-month unlimited kilometre parts-only warranty, or 3-year unlimited kilometres parts & labour warranty when fitted by an authorised Isuzu Trucks dealer, because reliability is everything!

DPD Assembly (including Filter)

8980845954	NL/NN 10/07-03/25	\$2,481.05
8980846025	NP/NQ 10/07-03/25	\$5,275.30

Front Bumper Assembly

8974068204	NL / NM 10/07 - 03/25	\$282.40
8974056355	NN / NP / NQ 10/07 - 03/25	\$291.60

Radiator Grille

8982410711	NN / NP/ NQ CHROME GRILLE 06/15 - 03/25	\$227.40
8974289771	NN / NP / NQ WHITE GRILLE 06/15 - 03/25	\$288.85
8974293721	NL / NM WHITE GRILLE 06/15 - 03/25	\$494.10

Front Panel Assembly

8981226920	NL / NM 10/07 - 03/25	\$306.85
8981226950	NN / NP / NQ 10/07 - 03/25	\$768.30

Front Door Panel Assembly

8982606051	RH NL/NM/NN/NP/NQ W/CORNERING LAMP 12/12 - 03/25	\$524.00
8982606060	LH NL/NM/NN/NP/NQ W/CORNERING LAMP 12/12 - 03/25	

Headlight Assembly

8982413250	RH NL/NM/NN/NP/NQ 10/07 - 03/25	\$146.30
8982413260	LH NL/NM/NN/NP/NQ 10/07 - 03/25	

Front Indicator Light Assembly

8981554580	RH NL/NM/NN/NP/NQ 10/07 - 06/21	\$105.85
8981554590	LH NL/NM/NN/NP/NQ 10/07 - 06/21	
8975579100	RH NL/NM/NN/NP/NQ 07/21 - 03/25	\$152.90
8975579110	LH NL/NM/NN/NP/NQ 07/21 - 03/25	





Isuzu Trucks Celebrates Historic 300,000th Sale with Delivery to Victorian Builder

Isuzu Australia Limited (IAL) is celebrating an extraordinary Australian automotive milestone with the delivery of its 300,000th truck in the country, a landmark achievement that powerfully reinforces its now 37 consecutive year reign as the nation's leading truck brand.

The historic vehicle, an all-new MY25 NQR 88-190 Crew Cab, has been delivered to family-owned Victorian construction specialist, Able Constructions and Management.

This milestone sale arrives hot on the heels of Isuzu's dominant 2025 sales result and the successful launch of its all-new MY25 range, showcasing the brand's unwavering momentum in a robust and growing market.

Ready & able.

For 25 years, Able Constructions has expanded from shop fit-outs to major projects across Melbourne's growth corridors. To support the work, the company chose the 8,800 kg GVM Isuzu NQR Crew Cab for its load capacity and manoeuvrability.

"We've got the longest wheelbase you can get with the crew cab," said Project Manager 'Fonz.'

"It was easy enough to just get a bigger truck, but being a light truck, it is a lot easier to manoeuvre in tighter spaces and the crew cab means I can bring the boys with me, and on rainy days, we can keep gear dry in the cabin.

"It's the perfect tool for the job."

The truck's specification, including a 4,500 kg rated tow bar, aligns perfectly with Able's diverse workload and transport requirements.

The Able team is particularly impressed by the advanced standard technology, describing the experience as less as a work truck and more like, "an advanced car."

"The Full-Speed Adaptive Cruise Control makes it very easy to drive. It's like an autopilot airplane!" Fonz remarked, highlighting further features like Advanced Emergency Braking and Lane Departure Warning that are part of the MY25 model's class-leading intelligent safety suite.

Milestones in market leadership.

The Able Constructions story epitomises the fit-for-purpose philosophy that has propelled Isuzu to an unmatched 37 consecutive years* of truck market leadership in Australia.

According to the latest industry data, the national heavy vehicle fleet continues to expand at an average annual rate of 2.7 per cent, with over 677,000 light through to heavy-duty trucks registered nationally.

Isuzu's supremacy within this growing landscape is unequivocal. In 2025, the brand captured a formidable 27.5 per cent of the total truck market, selling a total of 12,420 vehicles.

The brand continued its domination the light-duty segment as well, with a staggering 50.6 per cent share and held 49 per cent of the medium-duty segment.

All about trust.

Mr Craig White, Head of Sales at IAL, said the 300,000th Isuzu sale is a testament to decades of trust built with Australian businesses.

"Reaching 300,000 sales a powerful reflection of the partnerships we've forged with hard-working Australian companies like Able Constructions," Mr. White said.

"This milestone coincides with our latest and most impressive product offering now on sale across the country.

The Able Constructions NQR 88-190 Crew Cab is powered by Isuzu's 5.2-litre 4HK1-TCC engine, delivering 140 kW and 513 Nm of torque, paired with a smooth 6-speed Automated Manual Transmission.

"Our all-new MY25 N Series, featuring our Euro VI compliant 4HK1 engine and comprehensive safety technology, represents the next generation of Isuzu's commitment to reliability, innovation, and driver comfort.

"It's this relentless focus on delivering what our customers need that secures our position at the forefront of the industry, year after year," Mr White said.

Building the future together.

For Able Constructions, the new Isuzu NQR is a mobile workshop, a team transporter, and a reliable partner for the future.

"I'd definitely go for an Isuzu again," Fonz stated.

"We're extremely happy with them... if there is another option to buy another truck, we'll definitely be going back."

As Isuzu Trucks looks ahead, this historic sale underscores the simple, yet proven formula of understanding the nuanced needs of Australian industry and providing the tough, intelligent, and dependable vehicles that help businesses, large and small, build their own success stories.



Scan QR code to find your perfect truck



It's the " perfect tool for the job.

F / FX / FY-SERIES

Genuine Parts

For genuine peace of mind, maintain your Isuzu F/FX/FY-Series Truck by using Isuzu Genuine Parts which are developed and manufactured to stringent quality standards, providing you with maximum productivity, performance, and future re-sale value. All backed by a 12-month unlimited kilometre parts-only warranty, or 3-year unlimited kilometres parts & labour warranty when fitted by an authorised Isuzu Trucks dealer, because reliability is everything!

DPD Assembly (including Filter)

8976228835	FR*FS*FT* 2014 onwards	\$3,969.65
8976080574	FR*FS*FT*FV* 2016 onwards	\$1,933.45
8976080563	FV*FT* 2016 onwards	\$2,574.45

Fuel Common Rail Assembly

8980118882	FR*FS* 2008 onwards	\$634.40
8976099803	FR*FS*FT*FV* 2008 onwards	\$627.65

Fuel Injection Pump Assembly

8973865576	FR*FS* 2011 onwards	\$1,811.60
8943927146	FR*FS*FS*FT* 2000 onwards	\$2,402.65
8982395212	FR*FS*FS*FT* 2016 onwards	\$2,006.15
8976059468	FR*FS* 2011 onwards	\$2,006.15

Turbocharger Assembly

8976049759	FR*FS*FT*FV 2011 onwards	\$2,384.10
------------	--------------------------	-------------------

Intercooler Assembly (Charge Air Cooler)

8980476330	FR*FS*FT*FV 2011 onwards	\$1,605.95
1144310603	FX*GX*FY 2011 onwards	\$3,044.35

EGR Valve Assembly

8980182646	FR*FS^ 2008-2012	\$173.90
8980982575	FR* 2008 onwards	\$156.70
8982382633	FX*FY* 2011 onwards	\$386.35

Fuel Tank Assembly

8981229923	FR*FS* 2008 onwards	\$882.75
8981870021	FT*FV* 2008-2015	\$882.75
8983285120	FV*FT* 2016 onwards	\$1,016.20

Flywheel Assembly

8976024632	FR*FS*FT*FV* 2008 onwards	\$1,018.00
8980563552	FR*FS* 2008 onwards	\$680.25

Water Pump Assembly

1873109740	FR*FS*FT*FV 2018 onwards	\$655.05
1873111180	FX*FY* 2011 onwards	\$1,273.50
8973634780	FR*FS* 2008 onwards	\$238.00



GENUINE
Major assemblies

For genuine peace of mind, maintain your Isuzu Truck by using Isuzu Genuine Major Assemblies which are developed and manufactured to stringent quality standards, providing you with maximum productivity, performance, and future re-sale value. All backed by a 12-month unlimited kilometre parts-only warranty, or 3-year unlimited kilometres parts & labour warranty when fitted by an authorised Isuzu Trucks dealer, because reliability is everything!



Engine Assembly

1100651760	6HK1 Euro 5	\$39,490.25
1100615600	6HK1 Sitec 2 Euro 4 295ps FVD, FVL, FVM and FVR	\$33,230.35
8980650040	4HK1 Sitec 2 Euro 4 FRR, FRD	\$18,759.10
8982866830	4JJ1 MY15.5 E5 NNR	\$17,017.15

Transmission Assembly

8980676830	MY6S AMT (NP 4HK1)	\$7,775.15
8980676800	MY6S Manual (N 4HK1)	\$6,122.20
8981345200	MZW6P Man FRR/ FSR (6HK1)	\$17,491.95
8981345680	MZW6P AMT FRR / FSR (6HK1)	\$19,532.75

BENEFITS OF ISUZU GENUINE PARTS PURCHASED THROUGH THE AUTHORISED DEALER NETWORK.

Isuzu Genuine parts, are components made by Isuzu, for Isuzu Trucks.

The key benefits include:

- Assured Quality and Performance
- Long-Term Value
- Peace of Mind
- Warranty Protection

WARRANTY DETAILS.

The warranty for genuine parts can vary depending on how they are purchased and installed.

- 12-Month Warranty Over-the-Counter
- 36-Month Warranty When Installed in an Authorised Isuzu Dealer Workshop

DEALERSHIP NETWORK.

The existence of a nationwide dealership network, with 74 locations, provides significant advantages to customers:

- Widespread Accessibility
- Expert Service
- Consistent Quality
- Ease of Warranty Claims

ISUZU SERVICE AGREEMENTS

Zero-stress servicing. Brought to you by Isuzu.

No business wants big, unexpected bills. But with an Isuzu service agreement, you can flatten your truck servicing costs into a predictable monthly payment (or upfront fee with Isuzu Essentials). You'll also be part of one of Australia's biggest dealer networks, so you can book a service at locations around the country. With the new Chain of Responsibility laws, proper servicing will protect your business. Lastly, service agreements come with Isuzu Care, Australia's most comprehensive truck customer care programme. To find out more, see your nearest dealer or visit isuzu.com.au/care-support/service-agreements.



Ask your local Isuzu dealer about which service agreement is right for you.



Isuzu Essentials

Isuzu Essentials Plus

Isuzu Total

Isuzu Heritage

DEALER NETWORK

Isuzu has Australia's biggest dealer network. If you book into any Isuzu Service Centre nationwide, they'll have access to your truck's comprehensive service history



ISUZU CARE

Australia's most comprehensive truck customer care programme, Isuzu Care has a team of service specialists to ensure that owning your Isuzu is a great experience. To contact them, just freecall 1800 035 640.



CHAIN OF RESPONSIBILITY & NHVR

With a Priority Service Agreement, you're clearly demonstrating that you've pre-planned your fleet maintenance and have put established procedures in place. That means establishing NHVR (National Heavy Vehicle Regulator) fleet maintenance requirements couldn't be easier.



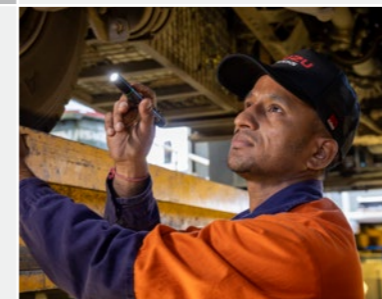
STREAMLINED PROCESS

Maintaining your trucks under a Priority Service Agreement is quick and easy. With prearranged payments, you won't have to worry about the hassle of arranging finances before your drivers drop off and pick up trucks on the day of the service.



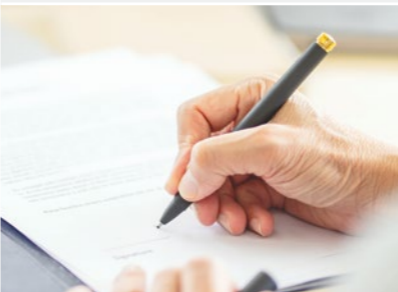
ONLY THE BEST SERVICE AND PARTS

Using a combination of the latest diagnostic software and Isuzu-approved parts, our qualified Isuzu technicians will keep your truck in tip-top condition.



REDUCE TOTAL COST OF OWNERSHIP

Better servicing helps reduce unforeseen overheads and results in more reliable, fuel-efficient trucks. And that means less downtime and lower total cost of ownership.



FACTORY TRAINED TECHNICIANS

Why would you trust your Isuzu to anyone but an Isuzu-trained technician? With meticulous training tailored specifically to Isuzu trucks, our team carries out servicing and repairs to manufacturer-documented standards (and that means the highest level possible!).



RESALE VALUE

Thanks to the comprehensive service history you receive from Isuzu, you'll always get the best price for your truck when the time comes for an upgrade.

Accessories

Isuzu Genuine Accessories are designed to improve your total driving experience through the enhancement of your truck's practicality and style. All Isuzu Accessories are designed and manufactured to meet Isuzu's rigorous engineering standards.

Heavy Duty Canvas Seat Covers

92959493	MY25 NL, NM HEAVY DUTY CANVAS FRONT SET	\$255.35
92959497	MY25 NNR, NPR, NPS, NQR, NQS SINGLE CAB HEAVY DUTY CANVAS FRONT SET	\$255.35
92959501	MY25 NNR, NPR, NPS, NQR, NQS CREW CAB HEAVY DUTY CANVAS FRONT SET	\$255.35
92959505	MY25 NNR, NPR, NPS, NQR, NQS CREW CAB HEAVY DUTY CANVAS REAR BENCH	\$255.35
92959506	MY25 NNR, NPR, NPS, NQR, NQS CREW CAB COMFORT CANVAS REAR BENCH	\$296.30
92959435	MY25 FR, FS, FV (EXCL FVD CREW), FX, FY HEAVY DUTY CANVAS FRONT SET (ISUZU PASSENGER SEAT)	\$255.35
92959441	MY25 FTS, FVD CREW CAB HEAVY DUTY CANVAS FRONT SET (ISRI PASSENGER SEAT)	\$255.35
92959482	MY25 FTS CREW CAB, FVD CREW CAB HEAVY DUTY CANVAS REAR BENCH SEAT	\$255.35
92959487	MY25 FRR CREW CAB, FSS CREW CAB HEAVY DUTY CANVAS REAR BENCH SEAT	\$255.35
92959459	MY25 FR, FS, FT, FV, FX, FY HEAVY DUTY CANVAS DRIVER'S SEAT ONLY	\$189.10

Rubber Floor Mats

5867131640	MY25 NKR AMT	\$62.30
5867131730	MY25 NLR, NMR, NMS AMT	\$59.90
5867131750	MY25 NNR, NPR, NPS, NQR, NQS AMT	\$66.30
5867131770	MY25 NMS CREW CAB REAR	\$47.20
92958541	MY25 NNR, NPR, NPS, NQR, NQS CREW CAB REAR	\$150.40
1867231901	MY25 FR, FS	\$108.35
1867231911	MY25 FT, FV	\$113.50
1867130771	MY25 FX, FY	\$89.55
92958836	MY25 FR, FS CREW CAB REAR	\$202.75
92958837	MY25 FT, FV CREW CAB REAR	\$202.75

Weathershields

5867602930	ALL MODELS EXCLUDING NKR - TINTED FRONT PAIR	\$193.50
------------	--	-----------------

Headlight Protectors

92956090	ALL N SERIES MODELS 10/07 - 06/21, FRR, FRD, FSR, FSD 10/07 - 03/25	\$98.40
92958598	ALL N SERIES MODELS 07/21 - 03/25	\$114.25
92958265	FTR, FV*, FX/FY 10/07 - 03/25 FITTED WITH GENUINE ISUZU BULLBAR	\$116.80
92956379	FTR, FV*, FX/FY 10/07 - 03/25	\$122.00

Lockable Ad-Blue Tank Caps

5867112340	MY25 N SERIES WITH 4JZ1 ENGINE	\$218.95
1867738503	MY25 N SERIES WITH 4HK1 ENGINE, MY25 FR/FS WITH 4HK1 ENGINE	\$118.10

Dash Mats

92959386	MY25 NKR - BLACK	\$150.15
92959388	MY25 NLR, NMR, NMS - BLACK	\$152.25
92959390	MY25 NNR, NPR, NQR, NQS - BLACK	\$160.60
92959392	MY25 FR,FS - BLACK	\$166.90
92959394	MY25 FT, FV, FX, FY - BLACK	\$175.05

Sunshades

5867131800	MY25 NKR	\$277.45
5867130821	MY25 NL/NM	\$256.65
5867130831	MY25 NN/NP/NQ	\$266.35

USB Power Outlets

1867240500	ALL MY25 N SERIES	
1867240501	ALL MY25 F SERIES, MY25 FX/FY	\$163.00



Introducing EX2R Featuring RGB Enabled Position Lights



Narva's new EX2 range offers unrivalled expression with over 20 models, interchangeable colour trims, customisable lens protectors and RGB enabled position lights (EX2R) so you can tailor them to your vehicle or your mood with your phone.



Clever Harness-Free DIY Installation

Revolutionary, patent-pending internal switching design of the EX2 range eliminates the need for a harness, making them the easiest to wire on the market, with no components needing to be routed through the firewall.

World-Class Build Quality

Featuring a virtually unbreakable UV Resistant Hard Coated polycarbonate lens which won't chip or yellow with age, diecast aluminium housing, and the highest possible ingress protection (IP68 & IP69K), EX2 lights provide exceptional durability and reliability



Exceptional Performance

EX2's hybrid beam provides outstanding width and distance, without dark spots or hot spots, ensuring exceptional clarity in the dark. 1 lux is available at 700m (Length) and 60m (Width) with a pair of 9" Driving Lights while the 30" double row light bar achieves an impressive 724m (Length) and 100m (Width).

8 Interchangeable Colour Trims

EX2 allows for a tool-free custom look to your driving lights and light bars with 8 interchangeable trim colour options: Slate (Grey), Stealth (Black), Sunburst (Yellow), Volcano (Red), Electric (Blue), Hyper (Green), Juiced (Orange), and Bubblegum (Pink).



7 Year No Fault Warranty

What's 'no fault'? Well if you feel that it should be covered by warranty, so do we! So, if you have a collision with a roo and your EX2 lamp is severely damaged, we'll happily replace it.

NARVA®

THE VISION TO GO FURTHER

EXPRESS YOURSELF



NARVA® METAL TRAILER PLUGS & SOCKETS

82161BL	7-PIN LARGE ROUND PLUG	\$10.90
82062BL	7-PIN LARGE ROUND SOCKET	\$12.50

NARVA® DEUTSCH CONNECTORS

57400	DEUTSCH CONNECTOR ASSORTMENT	\$304.85
57422BL	2 WAY WATERPROOF DEUTSCH CONNECTOR HOUSING KIT (2 PACK)	\$8.25
57424BL	2 WAY WATERPROOF DEUTSCH CONNECTOR HOUSING KIT (2 PACK)	\$14.95
56507	DEUTSCH® CRIMPING TOOL	\$43.15

NARVA® EX2 LIGHT BARS

72830	10" EX2 LIGHT BAR SINGLE ROW	\$149.35
72834	10" EX2 LIGHT BAR DOUBLE ROW	\$198.00
72838	20" EX2 LIGHT BAR SINGLE ROW	\$205.55
72842	20" EX2 LIGHT BAR DOUBLE ROW	\$273.55
72846	30" EX2 LIGHT BAR SINGLE ROW	\$332.50

NARVA® LED LAMPS

91602BL	MODEL 16 LED SIDE MARKER LAMP RED/AMBER - BLISTER PACK (1)	\$18.65
94850	MODEL 48 LED REAR DIRECTION INDICATOR & TWIN STOP/TAIL LAMP	\$187.75
91402	MODEL 14 LED SIDE MARKER LAMP RED/AMBER - CARTON (1)	\$14.70
94202	MODEL 42 LED REAR TWIN STOP/TAIL & DIRECTION INDICATOR LAMP	\$106.15
94210	MODEL 42 LED REAR STOP/TAIL, DIRECTION INDICATOR & REVERSE LAMP	\$141.15

NARVA® CABLE TIES - 100 PACK

UL approved nylon tie, with a UL94V-2 flammability rating and meets or exceeds tensile strength MIL-S 23190E with an operating temperature of -40oC to 85oC.

56402	3.6MM X 140MM (5.5")	\$4.10
56404	4.8MM X 200MM (8")	\$6.80
56406	4.8MM X 300MM (12")	\$12.60
56408	4.8MM X 370MM (14.5")	\$14.90
56410	7.6MM X 370MM (14.5")	\$29.80

BONUS PRODUCTS

When you buy these EX2 Driving Lights

72172P	7" EX2 DRIVING LIGHT KIT WITH BONUS 71300 POCKET LED INSPECTION LIGHT	\$397.00
72182P	9" EX2 DRIVING LIGHT KIT WITH BONUS 71426 LED HEAD LAMP	\$485.00





**ISUZU
POWER
SOLUTIONS**

Pump Partnership Keeping Drought at Bay

Stretching back to the late 1800s, generations of crop farmers in northern Victoria have grappled with drought and inconsistent rainfall, sometimes to crippling effect.

Moving Water.

Founded in 1987, Collins Pumps manufactures self-priming, high-volume pumps for harsh Australian agricultural conditions. Now based in Moama, NSW, the company has strengthened its range with reliable and economical Isuzu Power Solutions (IPS) diesel engines. Its direct-coupled pumps feature an integrated heat exchanger, eliminating the need for a radiator and fan—ideal for mobile and fixed applications.

Endless Options.

The award-winning range spans six- to 12-inch pumps for agriculture, irrigation, construction, flood mitigation and aquaculture. Collins relies on Isuzu three- and four-cylinder engines, including the 4JG1, 3CB1, 3CE and 4LE2, praised for reliability, fuel efficiency and value.

The Beating Heart.

The Isuzu 4JG1 delivers 46.2 kW and 195 Nm of torque—enough to power a 12-inch pump all day at 2,200 RPM, says Workshop Manager Stuart Chandler. Smaller three-cylinder models provide efficient, dependable performance. As an OEM, Collins works directly with IPS to source engines built to specification, fitting its own heat exchangers and control systems to most units.

Support.

With customers nationwide, access to IAL's dealer network ensures parts availability. Maintenance is typically limited to oil and filters, with engines that, according to Chandler, "just keep going."

A Quality Partnership.

Quality underpins Collins Pumps' high-standard finish and attention to detail. "We pride ourselves on the quality of our Australian-built pumps," said Chandler, adding that Isuzu's strong reputation supports a valued long-term partnership.



Read more

Isuzu Power Solutions

Power Unit Engine Assembly

4JJ1TYBW01PRM	\$26,442.45
4JJ1XYBW01PRM	\$30,360.60
4HK1XYBW02PRM	\$40,477.00
6HK1XYBW02PRM	\$52,728.85
6UZ1XYBW01PRM	\$74,467.00
6WG1XYBW01PRM	\$89,905.75

Bonus offer - with each engine purchased you will receive 2 sets of filter kits which include - Oil filter, fuel filters & air filters to suit the above listed models, also included is one Genuine Isuzu battery or batteries according to the power unit requirement.

**ISUZU
PARTS**

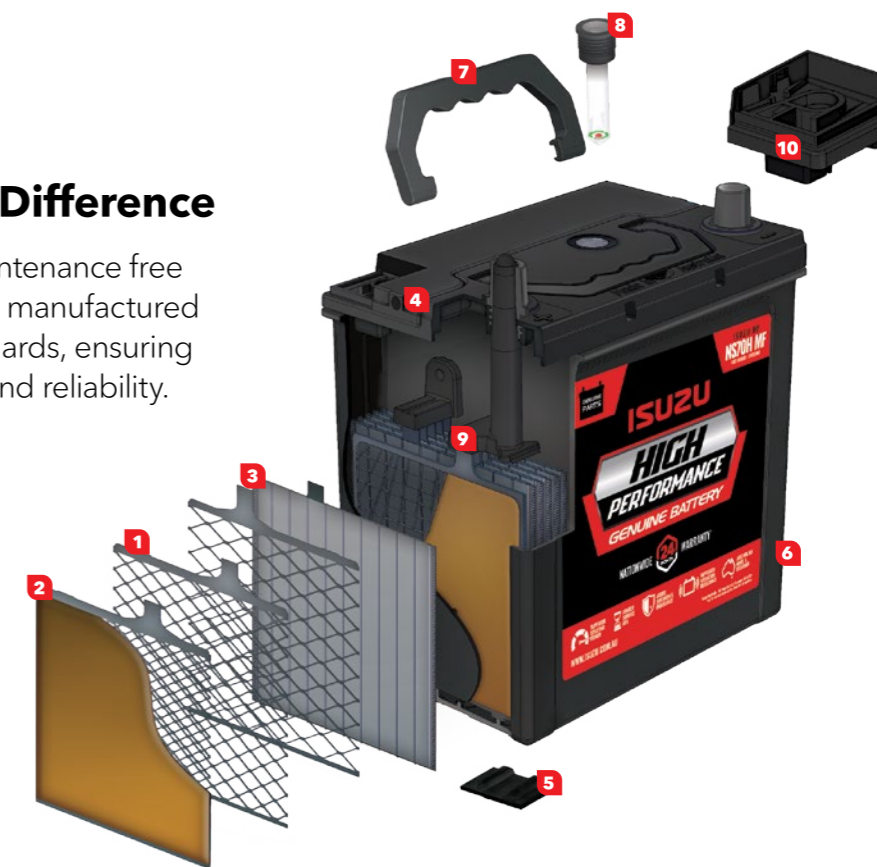
GENUINE

Genuine Batteries

The Isuzu Battery Difference

Isuzu's range of sealed maintenance free batteries are designed and manufactured to the highest quality standards, ensuring exceptional performance and reliability.

SUPPLIED BY



1 ROTARY PLATES

- Specialist advanced plate design provides longer service life and resistance to corrosion and material shedding.
- Lower internal resistance promoting higher CCA and improved vibration resistance.

2 ENHANCED PLATE PASTE

- Reduces water loss and improves charge acceptance for superior performance and cycle life.

3 SEPARATORS

- High Porosity Polyethylene Envelope (PE) separator improves puncture resistance and durability.
- Improves electrolyte dispersion for enhanced performance and power.

4 FLAME ARRESTOR

- The integrated flame arrestor in the central venting system protects the battery from explosion due to external ignition sources.

5 MUD RACK

- Mud rack container design improves plate support, vibration resistance and isolates paste deposits to prevent short circuits.

6 POLYPROPYLENE CASE

- Reinforced design provides durability to withstand shock and vibration.

7 CARRY HANDLE

- Ergonomic design provides a thicker grooved carry handle to improve comfort.
- Utilises fully constrained safety design with pivot pin moulded directly into the case.

8 STATE OF CHARGE INDICATOR

- For on the spot diagnosis of battery condition.

9 CAST ON STRAP

- Thicker cast on strap ensures durability and lower electrical resistance to promote longer life.

10 LABYRINTH LID TECHNOLOGY

- Provides spill proof protection up to 90°.
- Reduced water loss.

CYB123841	N-Series NS70 12V 650CCA Maintenance Free	\$215.00
CYB123842	N-Series NS70L 12V 650CCA Maintenance Free	
CYB125840	F-Series N100 12V 740CCA Maintenance Free	\$275.00
CYB125842	F-Series N100L 12V 740CCA Maintenance Free	

LIGHT THE WAY FORWARD WITH HELLA

X-TREME DRIVING LIGHTS

These driving lights deliver uncompromising power with a distinctive X-design position light, delivering unmistakable style alongside exceptional night-time visibility.

- Auxiliary headlamp with innovate 'X' LED position light
- Two sizes and colours, with shallow mounting depth
- Resilient aluminium housing
- High resistant polycarbonate lens (PVC)
- Ideal for mounting on off-road vehicles, trucks and SUVs
- Suitable for mounting in tight spaces



X-Treme 3" - White

1FE 358 233-831	Combo	\$214.15
1FE 358 233-841	Spot	\$214.15
1FE 358 233-851	Flood	\$214.15



X-Treme 4" - White

1FE 358 233-801	Combo	\$265.85
1FE 358 233-811	Spot	\$265.85
1FE 358 233-821	Flood	\$265.85



X-Treme 3" - Amber

1FE 358 233-941	Spot	\$214.15
<small>*off-road use only</small>		



X-Treme 4" - Amber

1FE 358 233-921	Spot	\$265.85
<small>*off-road use only</small>		



X-Treme Cover - Smoke

8XS 358 233-981	3"	\$10.35
8XS 358 233-971	4"	\$10.35



X-Treme Cover - Amber

8XS 358 233-961	3"	\$10.35
8XS 358 233-951	4"	\$10.35

TOUGH ON THE ROAD

BLACK MAGIC



HIGH LEVEL LIGHT OUTPUT

- Up to 20,000 effective lumens

VERSATILE MOUNTING

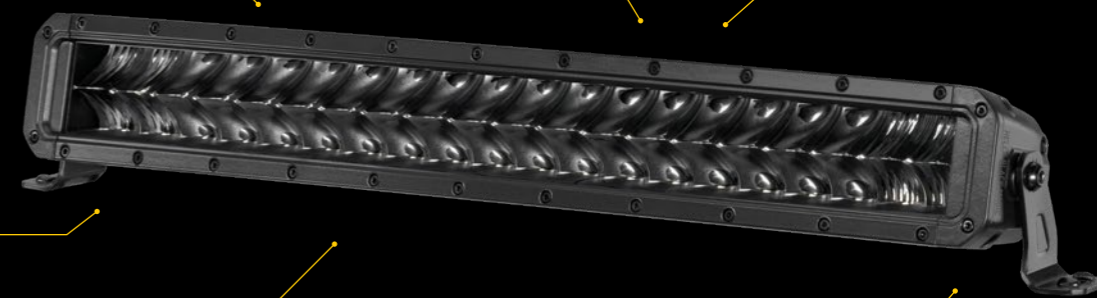
- Upright/pendant
- Fully adjustable slide brackets also available

INTEGRATED THERMAL MANAGEMENT

- Thermal Management = high output Long Lasting LED performance

BLACK OUT APPEARANCE

- Unique design creates black out appearance without affecting performance



TOUGH CONSTRUCTION

- Tough design and fully sealed, protects against sand, dust and water!
- Suits harsh Australian conditions
- Tested to the exacting Hella Germany Rallye standard

IMPACT RESISTANT PC LENS

- UV stabilised to protect against sun damage
- Tested against high vibration resistance



20" Single row light bar

1GJ 358 197-301	\$202.00
-----------------	----------



30" Double row light bar

1GJ 358 197-411	\$371.75
-----------------	----------



21" Double row light bar

1GJ 358 197-401	\$289.30
-----------------	----------



13" Double row light bar

1FJ 358 196-461	\$197.30
-----------------	----------



3.2" Cube kit - flood, flush

1FA 358 176-831	\$155.65
-----------------	----------



Australia

All Makes

Donaldson Blue® Air Filters with Ultra-Web® Fine Fiber Technology

Ultra-Web® Advantages:

- Engineered to perform in extreme temperature and humidity conditions, unlike ordinary fine fibers
- Optimized fiber structure and fiber diameter so it's stronger and lasts longer in all environmental conditions
- High efficiency – longer engine life
- High capacity – holds more contaminant
- Identifiable by the blue media color
- Proven – used in diesel engine market for nearly two decades

DBA5047	Primary Element - Upgrade of P150695	\$182.30
DBA5053	Primary Element - Upgrade of P153551	\$126.20
DBA5069	Primary Element - Upgrade of P527682	\$182.05
DBA5100	Primary Element - Upgrade of P534816	\$233.55



Donaldson® 4WD Filter Kits + Cabin Air Filter

Kit includes Oil Filter, Fuel Filter, Air Filter & Cabin HVAC Air Filter

X900147	Isuzu D-MAX & MU-X with 3.0L Turbo Diesel 4JJ1-TC & 4JJ3-TC Engine 07/2012-onwards Mazda BT-50 TF with 3.0L Turbo Diesel 4JJ3-TC Engine 09/2020-onwards"	\$102.90
X900191	Ford Ranger PX3 & Everest with 2.0L Diesel YN2S Engine MY2018-onwards	\$114.30
X900206	Toyota LandCruiser 79 Series with 4.5L V8 Turbo Diesel 1VD-FTV Common Rail 09/2019-onwards	\$87.20
X900158	Toyota LandCruiser 200 Series with 4.5L V8 Turbo Diesel 1VD-FTV Common Rail 11/2007-04/2019	\$108.70
X900146	Holden Colorado RG with 2.5L & 2.8L Diesel Engine 06/2012-onwards	\$112.55



Donaldson® Truck Filter Kits

Kit includes Oil Filter, Fuel Filter, Fuel/Water Separator (FWS)

X903243	Caterpillar C15/C16 Engine (Oil P551311, Fuel P551311, FWS P551858)	\$136.00
X903239	Detroit Series 60 NON-EGR (Oil P552100 x2, Fuel Primary P556915, Fuel Secondary P556916)	\$88.50
X903242	Detroit Series 60 EGR DDEC VI (Oil P552100 x2, Fuel DBF7917, FWS P558010)	\$146.85
X903286	Detroit Series DD13/DD15/DD16 40,000km Kit (Oil P551005, FWS P551011)	\$145.50
X900066	Kenworth with Cummins ISXe5/ISX15 (Oil P550949, Fuel P555776, FWS P557004)	\$175.35



Meritor Coiled Air Hoses

E10744	Short Tail	\$86.65
E10746	Long Tail	\$97.65



All Makes

Dana is a leading supplier of fully integrated drivetrain and electrified propulsion systems for all passenger vehicles. Working collaboratively with original-equipment manufacturers and the aftermarket, we focus on delivering best-in-class efficiency, maximum durability, and superior ride and handling across the globe.



Dana® King Pin Kits

140KK100	Dana I140/I145/I150 Axles - DX Garlock Bushing	\$439.30
328349	Dana E1002/E1462i Axles - DX Garlock Bushing	\$535.55
328344	Dana E1000/E1320i Axles - DX Garlock Bushing	\$653.40
328347	Dana E1002/E1462i Axles - Bronze Bushing	\$746.30



Spicer® Universal Joint Kits

SPL1704X	SPL170 Driveline	\$254.75
SPL2503X	SPL250 Driveline	\$248.95
5280XB	1710 Series Full-Round	\$128.60
5281XB	1810 Series Full-Round	\$129.55
5675X	1710 Series Half-Round	\$169.95
5676XB	1810 Series Half Round	\$130.20



Spicer® Centre Bearing Kits

5003323XB	Self-Aligning Semi Slotted	\$131.70
5003326XB	Self-Aligning Solid	\$148.75



Dana® Brake Shoe & Lining Kit

Kit Includes: Lined Brake Shoes & Hardware for one (1) wheel end.

25S098123	16.5" x 5" Dana E-Series Steer Axle	\$162.00
25S098125	16.5" x 6" Dana D2000F Steer Axle	
25S098127	16.5" x 7" Dana ES-165-7D Brakes on DSH40/D46-170 Drive Axles	



Eaton UltraShift® ECA Clutch Kits

Ensure performance and efficiency with the Electric Clutch Actuation (ECA) and intelligent shift selection software by replacing with genuine Eaton UltraShift® Clutch Kits. Enables better launch and shift decisions through grade sensing, weight computation and driver throttle commands. Provides smooth engagement and high fidelity of vehicle control, even in the most challenging applications. Designed for fast actuation to enable quick, open clutch shifting. Comes standard with a new inertia brake.

122002-35A	Heavy-Duty Clutch - Torque 1850 lb-ft	\$4,054.95
122003-42A	Heavy-Duty Clutch - Torque 2250 lb-ft	\$4,606.50
K-4145CL	Clutch Installation Kit	\$1,212.70
K-4252RX	Electric Clutch Actuator (GEN 2)	\$1,767.35



GENUINE Lubricants & Filtration

Engine Oil Filters

8980188580	NL*/NM*/NN* with 4JJ1 Engine MY2008-Current	\$17.70
8983282070	NP*/NQ* with 4HK1 Engine MY2008-Current	\$37.90
8982984040	FR*/FS* with 4HK1 Engine MY2016-Current	\$37.35
8943910494	FR*/FS*/FT*/FV* with 6HK1 Engine MY2016-Current	\$48.35
1132402330	FX*/FY* with 6UZ1 Engine MY2016-Current (Main Filter)	\$27.30
1132402341	FX*/FY* with 6UZ1 Engine MY2016-Current (Partial Filter)	\$81.60

Engine Fuel Filters

92956471	N & F Series with 4JJ1/4HK1/6HK1 Engine MY2008-Current (2-micron filtration)	\$25.20
92956472	FX*/FY* with 6UZ1 Engine MY2016-Current	\$41.80

Fuel/Water Sedimenter Elements

8975425390	FR*/FS* with 4HK1 Engine MY2016-Current	\$24.45
8980959830	NL*/NM*/NN*/NP*/NQ* with 4JJ1 & 4HK1 Engine MY2008-Current	\$149.70
8981653750	FR*/FS* with 4HK1 Engine MY2016-Current	\$31.35
8980924811	FR*/FS*/FT*/FV* with 6HK1 Engine & FX*/FY* with 6UZ1 Engine MY2016-Current	\$112.75

Isuzu NextGen Plus 10W-40 CK-4 E8/E11 Engine Oil

Premium Engine Oil that adheres to the latest E8/E11 ACEA specification and approval process. Using a carefully chosen base stock formulation and premium additives that meet the demands of Euro 5 & 6 engine requirements, it has been engineered to reduce oxidation and assist with piston cleanliness, decreasing soot and carbon build-up. Recommended for use in Isuzu Trucks and has wider appeal across a range of other commercial vehicles including those with Exhaust Gas Recirculation (EGR), Diesel Oxidation Catalyst (DOC) systems and Diesel Particulate Filter (DPD) exhaust after-treatment systems, making it a staple for any automotive workshop.

92958803	5 Litre Bottle	\$47.80
92958804	20 Litre Drum	\$177.80
92958805	205 Litre Drum	\$1,647.15
92958806	1000 Litre IBC	\$7,358.20



GENUINE Meritor

Meritor® Genuine Brake Shoe Kits

Meritor's MA2301 is the next generation of Meritor® OE heavy duty truck frictions. Developed with a modern chemistry to support RSD regulations, MA2301 offers exceptional friction stability allowing application from 23K to 29K GAWR (application dependent). With over a decade of proven field success, MA2301 is an excellent choice for construction, heavy haul, heavy duty linehaul, and specialty vehicles.

KSMA23014720QP	16.5" x 5" - 4720 Brake Lining	\$287.40
KSMA23014715QP	16.5" x 6" - 4715 Brake Lining	\$303.90
KSMA23014707QP	16.5" x 7" - 4707 Brake Lining	\$233.75



Meritor® Genuine Automatic Slack Adjusters

R801079	Steer Axle - 1.5"X 28 Spline 5.5" Length (Chamber Size 20)	\$208.25
R801073	Drive Axle - 1.5"X 28 Spline 5.5" Length (Chamber Size 30)	\$272.50



Meritor® Genuine King Pin Kits for FG941 Axle

R201310	Bronze Ream Bushing (Traditional)	\$299.50
R201309	Ezi-Steer Composite Ream Bushing	\$296.45
R203010	Readysset™ No-Ream Bi-Metal Bushing	\$404.50
R202010	Fastset™ No-Ream Stainless Steel Spiral Bushing (Heavy Duty)	\$685.55



Meritor® Genuine Brake Drums

03123219002	Steer Axle - 16.5" x 5" 335mm PCD 10 Stud	\$534.05
85123810	Steer Axle - 16.5" x 6" 335mm PCD 10 Stud	\$452.30
85123496	Drive Axle - 16.5" x 7" 335mm PCD 10 Stud	\$529.30



Meritor® Genuine Tie Rod Ends

R230068	Meritor FG941/MFS66 - Left Hand Thread	\$64.00
R230069	Meritor FG941/MFS66 - Right Hand Thread	\$64.00
R230072	Meritor MFS73/FL941 - Left Hand Thread	\$66.45
R230073	Meritor MFS73/FL941 - Right Hand Thread	\$66.45





MAXX22T HTD-415™ Disc Brake Caliper

415mm for 22.5" wheels

98881-118	Caliper Assembly - Left Hand	\$1,090.75
98881-119	Caliper Assembly - Right Hand	



MAXX22T HTD-415™ Disc Brake Rotors & Pad Kits

98815-027	415mm Rotor Kit (includes rotor, ABS ring & fasteners)	\$340.15
98881-117	Brake Pad Kit (includes pads, springs, holder brackets, screws & plugs)	\$476.70



INTRAAX® HXS™ Overhaul Brake Shoe Kit

For no-ream installation, a perfect fit, less downtime and better quality covered by a 2-year parts warranty.

S-23753-1	16.5" x 7" - 4707 Brake Lining	\$185.50
S-27783-1	15" x 8.625" - 4710 Brake Lining	\$205.60
S-23754-1	16.5" x 8.625" - 4711 Brake Lining	\$208.20



INTRAAX® HXS™ Brake S-Cams & Tube Kits

Cam Kit contains: tube assembly, cam tube support brackets, outer cam washer, spider retaining ring, inner spline washer, spline retaining ring, S-cam journal washer, screws and nuts.

S-24636-1L	16.5" 28 Spline S-Cam - LH	\$52.90
S-24636-1R	16.5" 28-Spline S-Cam - RH	\$52.90
S-31703	16.5" Cam Tube Kit	\$161.75
S-25024-1L	15" 28 Spline S-Cam - LH	\$84.05
S-25024-1R	15" 28 Spline S-Cam - RH	\$84.05
S-31706	15" Cam Tube Kit	\$153.90



INTRAAX® & HT™ Air Spring Assemblies

S-21800	AAT/AANT230 (except 12" ride-height)	\$278.65
S-21208	HT230 - Top Mount	\$302.50
C-20901	AAT250 (except 12" ride-height)	\$336.90
C-20127	HT250 - Underslung	\$364.40

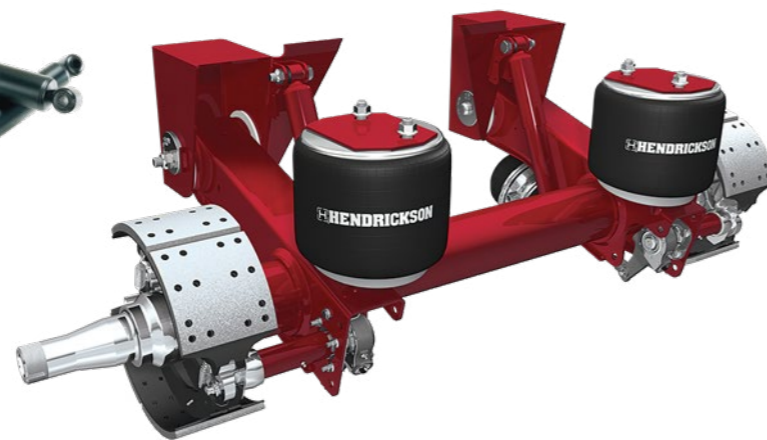


Hendrickson Tri-Functional™ Bush Kits

A-31624	AAT/HT with 6" Wide Bush	\$268.15
S-31622	AANT with 3" Narrow Bush	\$391.90

Hendrickson INTRAAX® & HT™ Shock Absorbers

S-20889	HT230/AAT230-250 - Non-Road Friendly Suspension (RFS)	\$154.00
S-21699	HT230/AAT230-250 - Standard Road Friendly Suspension (RFS)	\$183.55



All Makes

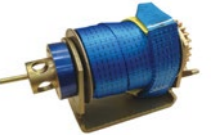
Bendix® Brake Valves

275707N	D-2 Governor Valve	\$105.85
286171N	E-6 Dual Brake Valve (Basic Treadle)	\$223.30



Ancra® Winches with Straps

4920320	Slide-On Winch with 50mm x 9m Strap	\$59.60
4356420	Clip-On Winch with 50mm x 9m Strap	\$76.10
4920320RC	Slide-On Ratchet Cap Winch with 50mm x 9m Strap	\$82.90
4356420RC	Clip-On Ratchet Cap Winch with 50mm x 9m Strap	\$97.20
4231310	Straight Winch Handle with Grip - 550mm Long	\$15.95



Ancra® Squat Bottle Jacks

ANC012	Squat Bottle Jack with Handle - 12 Tonne	\$78.65
ANC020	Squat Bottle Jack with Handle - 20 Tonne	\$110.00



Ancra® Ratchet Tie-Downs

50000-12	50mm x 9m Ratchet Tie Down Strap	\$17.75
50000-12-11MTR	50mm x 11m Ratchet Tie-Down Strap	\$20.35



Timken® Wheel End Kits

Includes Hub Seal, Inner & Outer Wheel Bearing Sets

WBK4SCR	FF Steer Axle (SKF Seal 35066 / Inner SET413 / Outer SET406)	\$132.60
WBK3DCR	R Drive Axle (SKF Seal 47697 / Inner SET403 / Outer SET401)	\$183.85
WBK3DCRV	R Drive Axle (SKF Seal 47693 / Inner SET403 / Outer SET401)	\$193.80



SKF® Scotseal Wheel Seals

35058XT	Scotseal X-Treme - Steer Axle	\$37.90
35066	Scotseal Classic - Steer Axle	\$26.10
47691XT	Scotseal X-Treme - Drive Axle	\$44.20
47693	Scotseal Long Life - Drive Axle (High Temp)	\$31.05
47697	Scotseal Classic - Drive Axle	\$29.95



Fleetguard® Air Filters

AF1968M	Air Filter Primary	\$100.20
AF1969M	Air Filter	\$133.30
AF351KM	Air Filter	\$72.70
AF887KM	Air Filter	\$118.55



Isuzu Legacy

Isuzu has a comprehensive range of parts to suit older model Isuzu Trucks, all manufactured to high standards and backed by a 12-month, unlimited kilometre parts warranty. Reliability is Everything!

BVP Filter Kits

92955807	N-Series with 4HE1 Turbo Intercooled Engine (SiTEC 130/140/145/170)	\$30.55
92955808	N-Series with 4HE1/4HF1/4HG1 Engine (SiTEC 110/115/120 excluding NPS)	\$27.85
92955811	N-Series with 4HK1 Engine (SiTEC 150/175)	\$37.80
92955812	F-Series with 6HH1 Engine (SiTEC 175/200)	\$44.80
92955815	F-Series with 6SD1 Turbo Engine (SiTEC 270)	\$57.55
92955816	F-Series with 6SD1 Turbo Engine (SiTEC 275)	\$55.30
92955818	F-Series with 6HK1-TCS Engine (SiTEC 255)	\$37.10
92955820	C&E Series (Giga) with 6WF1/6WG1 Engine(SiTEC 385/425 from 01/03/2004)	\$38.70



Engine & Engine Components

92956897	Engine Rebuild kit 6WG1-TCC/TCN SiTEC II 455 Aug 2011-	\$6,503.75
8976034158	Injection Nozzle CX*/EX* w/6WG1-TCC/TCN SiTEC II 455	\$345.40
1156035154	Injection Pump CX*/EX* w/6WG1-TCC/TCN SiTEC II 455	\$3,622.30
1144004475	Turbocharger assembly CX*/EX* w/6WG1-TCC/TCN SiTEC II 455	\$4,741.05
1532253701	Rear Engine Mount CX*/EX* ('08 on) RH	\$459.25
1532253711	Rear Engine Mount CX*/EX* ('08 on) LH	\$459.25
8973805086	Starter Motor CX*/EX* ('08 on)	\$1,428.70
8980136143	Alternator CX*/EX* ('08 on)	\$5,237.95

Clutch & Brake Components

1876102170	Clutch kit 6WG1-TCC/TCN SiTEC II 455 Aug 2011-	\$2,704.45
1475002510	Clutch Master Cylinder CX*/EX* w/6WG1-TCC/TCN SiTEC II 455	\$172.65
1318004312	Clutch Booster CX*/EX* w/6WG1-TCC/TCN SiTEC II 455	\$463.30
8981804923	Air Dryer Assembly CX*/EX* w/6WG1-TCC/TCN SiTEC II 455	\$2,467.05
14161901001MTB	Rear Hub and Drum assembly CX*/EX* ('08 on) RH	\$1,554.15

Panels

1711010231	Front Lid Panel CX*/EX* ('08 on)	\$1,220.35
1654731824	Front Corner Panel CX*/EX* ('08 on) RH	\$558.50
1654731854	Front Corner Panel CX*/EX* ('08 on) LH	\$378.20
1712672931	Blister Fender CX*/EX* ('08 on) RH	\$206.60
1712672941	Blister Fender CX*/EX* ('08 on) LH	\$139.75
1744181783	Window Regulator CX*/EX* ('08 on) RH	\$115.45
1744181793	Window Regulator CX*/EX* ('08 on) LH	\$238.15

Cooling System

1873109940	Water Pump CX*/EX* ('08 on)	\$948.50
1214109185	Radiator CXY ('08 on)	\$4,711.55
8976045255	Charge Air Cooler CX*/EX* ('08 on)	\$4,685.90

Driveline & Suspension Components

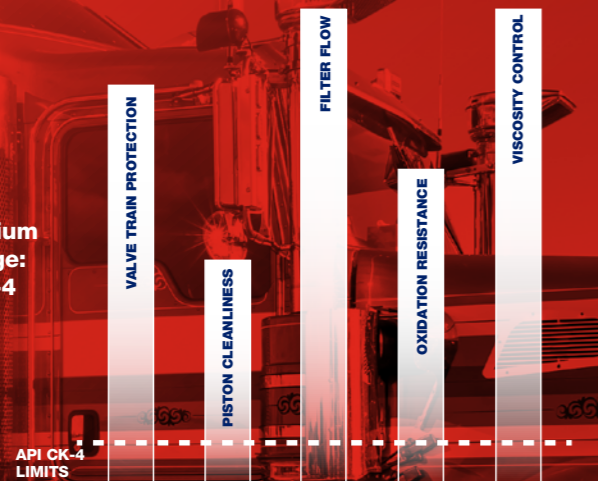
1212102351	Power steering reservoir CX*/EX* ('08 on)	\$487.15
1516308360	Front Shock Absorber CX*/EX* ('08 on)	\$447.00

Accessories

92957915	Drivers Seat Cover ISRI SUSP SEAT 6860/875 (Sheepskin)	\$257.90
92957917	ISRI SUSP SEAT 6860/875 (Super Tough Canvas) CX*/EX* ('08 on)	\$156.15
1884348070	Rubber Floor Mat Set CX*/EX* ('08 on) LH	\$114.55
92955790	Dash Mat CX*/EX* ('08 on) LH	\$175.30

VALVOLINE™ PREMIUM BLUE™

The Valvoline Premium Blue 8600 Advantage: Exceeds all API CK-4 base requirements



Valvoline Premium Blue™ 8600 15W-40 Diesel Engine Oil

132405	5 Litre Bottle	\$40.05
132420	20 Litre Drum	\$135.25
132451	205 Litre Drum	\$1,354.70
1324IBC	1000 Litre IBC	\$6,531.45

Fleetguard® Oil Filters for Cummins On-Highway Engines

LF14000NN	Cummins ISX/ISXe5/X15/ISM/ISMe5	\$59.00
-----------	------------------------------------	---------



Extend
Cummins X15
Euro 6 service
intervals up
to 80,000kms*

Allowing
the next
generation of
Cummins heavy
duty engines to
truly go further

VALVOLINE PREMIUM BLUE IS ENDORSED AND RECOMMENDED BY CUMMINS.



*Always refer to operator's manual for correct oil drain intervals.

ISUZU
TRUCKS

Isuzu Owners Represent for 2025 Truck of the Year Competition

Isuzu Australia Limited (IAL) has announced the winners of its annual Truck of the Year competition, celebrating the customers and businesses who rely on Isuzu trucks nationwide.

Each year, Isuzu's expert judging panel comes together to review the monthly winners and deliberate on who progresses through to the final rounds.

2025 Overall Winner - The Glenapp Boys.

Taking out the overall 2025 Truck of the Year title is The Glenapp Boys, entered by Rob Sibson with his NPR 65-190 Crew Cab. The truck impressed judges with its immaculate presentation, custom paintwork and versatile tray configuration.

Beyond its appearance, the NPR plays a meaningful role in Rob's volunteer work maintaining the historic Glenapp Railway Station in Queensland. The crew cab carries tools, equipment and supplies, and even serves as accommodation during weekend restoration work.

"The truck itself is standard, but I've added what I wanted. Ride comfort, pulling power, turning circle, it's all there," Rob said. "It's got a better turning circle than most vehicles... You can get it into places people don't expect a truck to fit."

Rob's entry also claimed the 2025 N Series category win.

F Series Winner - Duniam Freight

The 2025 F Series award went to Duniam Freight, with an Isuzu FVL 240-300 Freightpack operated by Lisa Smith in Tasmania. Since late 2023, Lisa has travelled nearly 200,000 kilometres across the state.

"I am just under five feet tall, but the truck has been awesome. All round it is a win win for me," she said.

FX/FY Series Winner - Bin Master Skips.

Bin Master Skips secured the FX/FY Series title with its Isuzu FYJ 300-350 MWB. Owner Jaydn Clarke said the truck has strengthened the family-run business.

"It turns heads whenever it's seen on the road, kids love it," he said.

Each Series winner receives a \$1,500 prepaid Digital MasterCard, while the overall winner receives \$6,000 and the 2025 Truck of the Year title. Entries for the 2026 competition open in March.

Isuzu truck owners can enter the 2026 Truck of the Year competition by visiting isuzu.com.au and completing a simple entry form once the competition opens in March, 2026.

Isuzu Australia would like to thank customers for their ongoing support and congratulate all winners and entrants.



BONUS

YETI Rambler® Bottle

When you purchase an Isuzu Genuine Filter Kit, 20 Litres of Isuzu NextGen Engine Oil & 1 Litre of Isuzu Diesel Injector Cleaner



Scan QR CODE to redeem your YETI Rambler® Bottle



Must purchase 1 x Isuzu Genuine Filter Kit (eligible part numbers 92958223, 92958224, 92958225, 92958226, 92958227), 20 Litre of Isuzu NextGen Engine Oil (eligible part number 92958804) & 1 Litre of Isuzu Diesel Injector Cleaner (eligible part number 92958717) in a single transaction during the promotional period 1st January 2026 - 31st March 2026 from an Isuzu Trucks dealer <https://www.isuzu.com.au/find-a-dealer/>. Maximum of one (1) "YETI Rambler® 26 oz (769 ml) Isuzu Trucks Bottle with Chug Cap in Rescue Red" per Australian Business Number (ABN), only while stocks last (first 250 redemptions). Once stock is depleted, the promotion will conclude and will not be substituted. Promotion can only be redeemed by submitting your claim using the QR Code. YETI Rambler® Bottle will be shipped to customers nominated physical street address (No PO Boxes).

ISUZU MERCHANDISE

LaunchRange

Isuzu's all new merchandise collection is crafted specifically for dedicated Isuzu Truck customers. The LaunchRange celebrate the release of our new truck, showcasing innovative designs & exciting new features.



Launch Active Hoodie Grey (Sizes S-3XL)
92959292 - 297
\$68.00



Launch Staple T-Shirt Black (Sizes S-3XL)
92959298 - 303
\$35.00



Launch Softshell Jacket
92959286 - 91
\$114.00



Launch Cooler Bag
92959304
\$60.00



Launch Curve Peak Cap - Black
92959308
\$33.00



Launch Stubby Holder Red
92959305
\$7.00



Launch Stubby Holder White
92959306
\$7.00



Launch Stubby Holder Black
92959307
\$7.00



ISUZU TRUCKS Metal Keyring
92959280
\$12.00



Alpine Softshell Jacket S-3XL
92959211 - 216
\$119.00



Quilted Bomber Jacket S-3XL
92959217 - 222
\$110.00



Street Smart Hoodie Red S-3XL
92959223 - 228
\$65.00



X-Treme Softshell Hoodie S-3XL
92959229 - 234
\$110.00



Hydra Black Puffer Vest S-3XL
92959235 - 240
\$97.00



Pom Pom Rolled Beanie
92959268
\$32.00



Marle Cuff Rolled Beanie
92959269
\$27.00

