

# Basic Plan Information Document

When you're signing up to something new, it's important to know what's what. Here's some essential info about Powershop and this offer.

**ELECTRICITY**OFFER **POWERSHOP**LITEDISTRIBUTOR **SA POWER NETWORKS**

## About Powershop

We sell energy to homes and businesses in Victoria, NSW, South East QLD and South Australia. We work hard to provide better prices, a fairer deal for all our customers, and a better future for the planet.



Get energy insights and stay in control of your energy use

**OVER 200,000**  
app downloads



Get the best service from our award winning Customer Team

**93%** average  
customer  
satisfaction rating

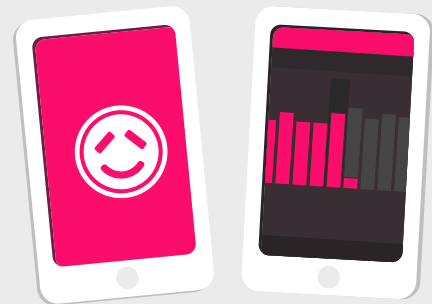


Get 100% carbon offset energy at no extra cost to you

**OVER 1.8 Million**  
tonnes of carbon offset  
thanks to Powershop customers

## About this offer

This is a simple set and forget offer with no discounts, just a great rate. You get access to the Powershop app to manage your bills and energy usage.



## Need Help?

Visit our help centre:

**[powershop.com.au/help](https://powershop.com.au/help)**

Call us on:

**1800 462 668**

The following pages have been created by the Energy Made Easy Government website.

Get in touch if you're not sure how to read the info on the following pages. We can help you understand which rates and tariff apply to you.

You can also visit

**[powershop.com.au/basic-plan-information](https://powershop.com.au/basic-plan-information)**



## PowershopLITE

- No contract term
- Single rate tariff

Call 1800 462 668

[www.powershop.com.au](http://www.powershop.com.au)

### Estimated price

1 person	LOW 8.3 kWh/day	<b>\$ 1,440</b> with discounts \$1,440 per year
2 to 3 people	MEDIUM 13 kWh/day	<b>\$ 2,040</b> with discounts \$2,040 per year
4 to 5+ people	HIGH 16.9 kWh/day	<b>\$ 2,520</b> with discounts \$2,520 per year

All prices listed are inclusive of GST except where indicated.

### Plan features

- Monthly billing option
- 10 day cooling off period
- No credit card fees
- No exit fees
- No fees for paper bills
- No move in fee
- Plan prices are not fixed

### Fees and charges

**Disconnection fee** **\$42.13**

### Pricing

All rates are GST inclusive

General charges	Daily supply charge	107.21 cents/day
	General usage rates	34.60 cents/kWh
Solar feed-in	10.2 cents/kWh exported	
Green power	10% to 100% options available	

### Contract details

Effective from	1 Jul 2019
Cooling off period	10 business days
Contract expiry	This Powershop offer has no exit fees or lock-in contracts
Distributor	SA Power Networks

Estimated prices are based on typical usage in your area. Prices are not personal estimates and your household's usage may vary. Prices exclude solar payments, concessions and bonuses.

## Fees and charges

### Disconnection fee

\$42.13

A disconnection fee may apply

## Billing and pricing details

Billing period	Every month
Payment options	Direct debit, Credit card, BPay
Prices are not fixed	If we vary our prices we'll always give notice as soon as reasonably practicable – usually by email and no later than 5 business days before the variation is to take place.

## General usage charges

Usage rates (at all times)

- Usage at all times  
34.60 cents/kWh

## Solar feed-in

Voluntary FIT 10.2 cents/kWh exported

Government feed-in tariffs available for eligible customers. Contact retailer for details

## GreenPower

Usage	Charge	
100%	\$0.06 per unit of usage	100% GreenPower for 5.5c/kWh inc. GST (no discounts apply to GreenPower charges). We offer 10%, 25%, 50% and 100% GreenPower.
50%	\$0.03 per unit of usage	50% GreenPower for 2.75c/kWh inc. GST (no discounts apply to GreenPower charges). We offer 10%, 25%, 50% and 100% GreenPower.
25%	\$0.01 per unit of usage	25% GreenPower for 1.38c/kWh inc. GST (no discounts apply to GreenPower charges). We offer 10%, 25%, 50% and 100% GreenPower.
10%	\$0.01 per unit of usage	10% GreenPower for 0.55c/kWh inc. GST (no discounts apply to GreenPower charges). We offer 10%, 25%, 50% and 100% GreenPower.

## Terms and conditions

Further information in relation to this offer, see our terms and conditions at: [powershop.com.au/prices](http://powershop.com.au/prices)

## Additional fee information

Information is set out on our fees page: [powershop.com.au/fees](http://powershop.com.au/fees).

### Contact details

### Powershop



 Call **1800 462 668**

 [www.powershop.com.au](http://www.powershop.com.au)

Energy Made Easy is an Australian Government website where you can compare energy plans. Visit Energy Made Easy at [energymadeeasy.gov.au](http://energymadeeasy.gov.au)





## PowershopLITE

- No contract term
- Single rate with controlled load tariff

Call 1800 462 668

[www.powershop.com.au](http://www.powershop.com.au)

### Estimated price

1 person	LOW 8.3 kWh/day	<b>\$ 1,360</b> with discounts \$1,360 per year
2 to 3 people	MEDIUM 13 kWh/day	<b>\$ 1,910</b> with discounts \$1,910 per year
4 to 5+ people	HIGH 16.9 kWh/day	<b>\$ 2,360</b> with discounts \$2,360 per year

All prices listed are inclusive of GST except where indicated.

### Plan features

- Monthly billing option
- 10 day cooling off period
- No credit card fees
- No exit fees
- No fees for paper bills
- No move in fee
- Plan prices are not fixed

### Fees and charges

**Disconnection fee** **\$42.13**

### Pricing

All rates are GST inclusive

General charges	Daily supply charge	107.21 cents/day
	General usage rates	34.60 cents/kWh
Controlled load	Controlled load usage	25.56 cents/kWh
Solar feed-in	10.2 cents/kWh exported	
Green power	10% to 100% options available	

### Contract details

Effective from	1 Jul 2019
Cooling off period	10 business days
Contract expiry	This Powershop offer has no exit fees or lock-in contracts
Distributor	SA Power Networks

Estimated prices are based on typical usage in your area. Prices are not personal estimates and your household's usage may vary. Prices exclude solar payments, concessions and bonuses.

## Fees and charges

### Disconnection fee

\$42.13

A disconnection fee may apply

## Billing and pricing details

Billing period	Every month
Payment options	Direct debit, Credit card, BPay
Prices are not fixed	If we vary our prices we'll always give notice as soon as reasonably practicable – usually by email and no later than 5 business days before the variation is to take place.

## General usage charges

Usage rates (at all times)

- Usage at all times  
34.60 cents/kWh

## Controlled load charges

	Controlled load usage	
Controlled Load	● All usage 25.56 cents/kWh	Rate

## Solar feed-in

Voluntary FIT 10.2 cents/kWh exported

Government feed-in tariffs available for eligible customers. Contact retailer for details

## GreenPower

Usage	Charge	
100%	\$0.06 per unit of usage	100% GreenPower for 5.5c/kWh inc. GST (no discounts apply to GreenPower charges). We offer 10%, 25%, 50% and 100% GreenPower.
50%	\$0.03 per unit of usage	50% GreenPower for 2.75c/kWh inc. GST (no discounts apply to GreenPower charges). We offer 10%, 25%, 50% and 100% GreenPower.
25%	\$0.01 per unit of usage	25% GreenPower for 1.38c/kWh inc. GST (no discounts apply to GreenPower charges). We offer 10%, 25%, 50% and 100% GreenPower.
10%	\$0.01 per unit of usage	10% GreenPower for 0.55c/kWh inc. GST (no discounts apply to GreenPower charges). We offer 10%, 25%, 50% and 100% GreenPower.

## Terms and conditions

Further information in relation to this offer, see our terms and conditions at: [powershop.com.au/prices](http://powershop.com.au/prices)

## Additional fee information

Information is set out on our fees page: [powershop.com.au/fees](http://powershop.com.au/fees).

## Contact details

### Powershop



 Call **1800 462 668**

 [www.powershop.com.au](http://www.powershop.com.au)

Energy Made Easy is an Australian Government website where you can compare energy plans. Visit Energy Made Easy at [energymadeeasy.gov.au](http://energymadeeasy.gov.au)

