

Distribution Policy

The Raukawa ki te Tonga Trust (Trust) was established as a Mandated Iwi Organisation on the 10th September 2010 to govern commercial fisheries matters relating to Raukawa ki te Tonga. The Trust Deed sets out the functions and purposes, and provides for the control, governance and operation of the Trust through the expression of Kaupapa Tuku Iho. The Trust is required to act for the benefit of all the members of the Iwi whānui of Raukawa ki te Tonga. (Deed page 1). The value of the Trust Fund established in 2010 should be maintained for future generations.

PURPOSES

The purposes for which the Trust is established are to, through the Trustees, receive, hold, manage and administer the Trust Fund for charitable purposes which benefits Raukawa ki te Tonga, whether it relates to:

- (a) the relief of poverty;
- (b) the advancement of education or religion; or
- (c) any other matter that is beneficial to Māori as a people and, in particular, is beneficial to the community of Raukawa ki te Tonga and all the Members irrespective of where those Members reside. (Deed 3.1)

KAUPAPA

The Trustees of Raukawa ki te Tonga Trust will work with Kaupapa Tuku Iho inherited from tūpuna Māori including, but not limited to, manaakitanga, rangatiratanga, whanaungatanga, kotahitanga, wairuatanga, ūkaipōtanga, pūkengatanga, kaitiakitanga, whakapapa and te reo, to enhance our relationships with one another and those with whom we work to achieve the aspirations of Raukawa ki te Tonga.

RECIPIENTS

- Provide distributions to Marae, Iwi/Hapū, and any other Entity Beneficiary¹ in furtherance of the Charitable Purposes. (Deed 3.2 k)

LEVEL OF DISTRIBUTION

The money available for distribution in any year is dependent on the dividend for that financial year end (30th September).

In 2012 Trustees have resolved to establish a Distribution Reserve. This fund will have no other purpose than to receive and distribute funds in accordance with the Trust's Distribution Policy. The Trust has resolved to open the Distribution Reserve with \$200,000 which will be the Anticipated Distributions available for distribution during the next financial year.

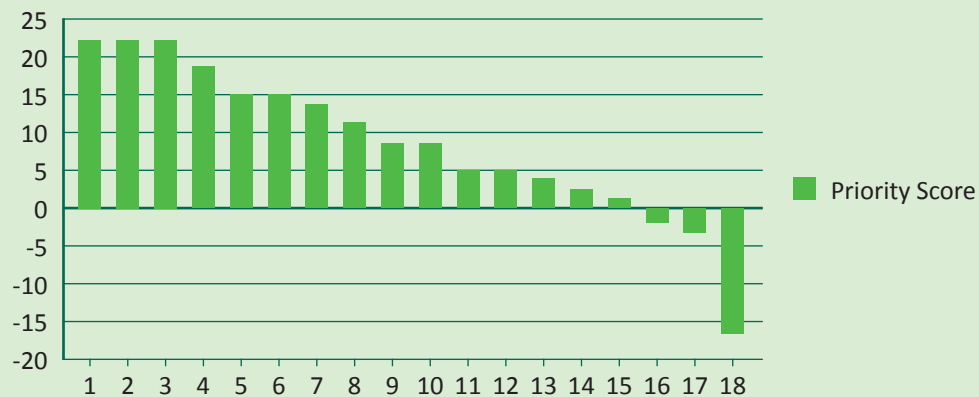
DISTRIBUTION CATEGORIES

The Trust Fund can be applied towards the Charitable Purposes in a manner that benefits, or has the potential to benefit, all Members, including the future generations of Members. (Deed 4.11.b) Priorities identified by Members at the 2012 AGM have been included in the graph below and will be considered by the Trust. The following table is indicative of the priorities identified in a 2012 survey of members.

¹ Definition in the Deed – any organisation (whether incorporated or unincorporated) that operates for the Charitable Purposes for the benefit of some or all of the Members.

2012 AGM SURVEY RESULTS

Priority	Reference
1	Trust assets should be protected to benefit future generations.
2	Grants should be made to marae/hapu for social and cultural development.
3	Grants should be made to marae/hapu for business and economic development.
4	Education grants should be made to tertiary education students.
5	Distributions should not duplicate grants already available from others
6	Education grants should target areas of greatest need for the iwi e.g. Drs, Health professionals, Te reo teachers.
7	Grants should only be made to registered members
8	A Distribution policy should prioritise marae/hapu.
9	A Distribution policy should set priorities for grants each year.
10	Priority should be given to individuals who support their marae/hapu.
11	Grants should mainly benefit those who live in NZ.
12	Education grants should be made to secondary school students.
13	Grants should be made to organisations that service our members
14	A Distribution policy should target individuals as well as marae/hapu.
15	Grants should benefit our people worldwide.
16	Grants should be available to our members in Australia.
17	Grants should only be made to marae for purposes not funded by Lottery grants.
18	A Distribution policy should prioritise individuals.



APPLICATION PROCESS

Applications open 1st July 2013.

Potential recipients must fill in the Distribution Application Form and Applicant Agreement.

Applications close 9th September 2013.

Notification of outcome by 15th November 2013.

All applications and enquiries should be addressed to:

The Secretary
Raukawa ki te Tonga Trust
144 Tasman Road
PO Box 15012
Otaki 5512
(06)364 9011 ext. 726
0273574994
raukawakitonga@twor-otaki.ac.nz