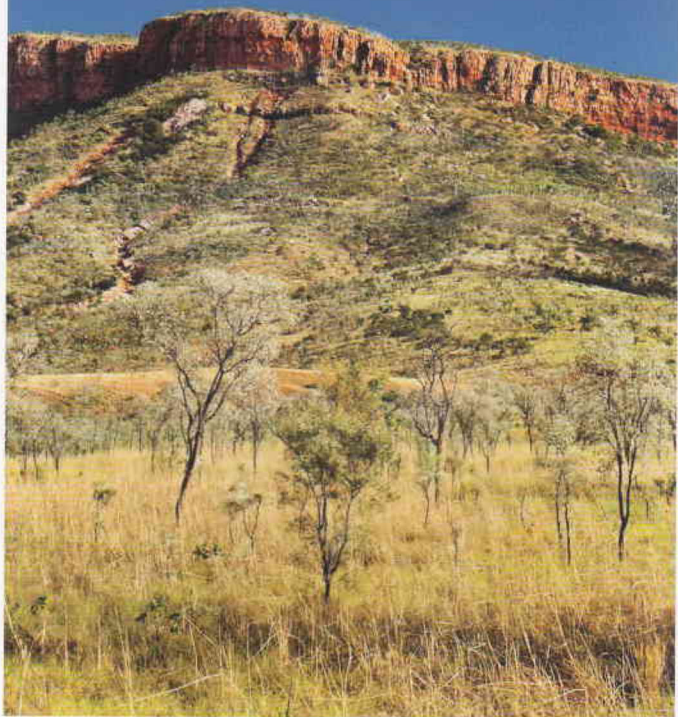




EL QUESTRO
WILDERNESS PARK

Camping in the wilderness

El Questro Wilderness Park



Why El Questro?

El Questro is located in the East Kimberley and is almost 1,000,000 acres in size. The Kimberley region itself is 1.7 times the size of the UK and almost 10 times the size of Switzerland.

You could stay at El Questro for a year and still not come close to experiencing everything this magnificent part of the world has to offer. Experience a vast array of activities, ranging from boating and fishing on the Chamberlain Gorge, relaxing in the thermal pools of Zebedee Springs through to the more adventurous horse riding expeditions and scenic helicopter flights through canyons and gorges, past waterfalls and caves offering unrivalled views of this awesome and ancient country.

The landscape is diverse, with broad tidal flats and rugged sandstone ranges, to rainforest pockets, gorges and waterfalls. Animal and bird life congregate at waterholes and the four river systems are home to all kinds of fish, including the mighty Barramundi.

Whichever way you look at it, El Questro is a holiday experience you will never forget.



Bushwalking on El Questro Station



Grab a drink at the Swinging Arm Bar