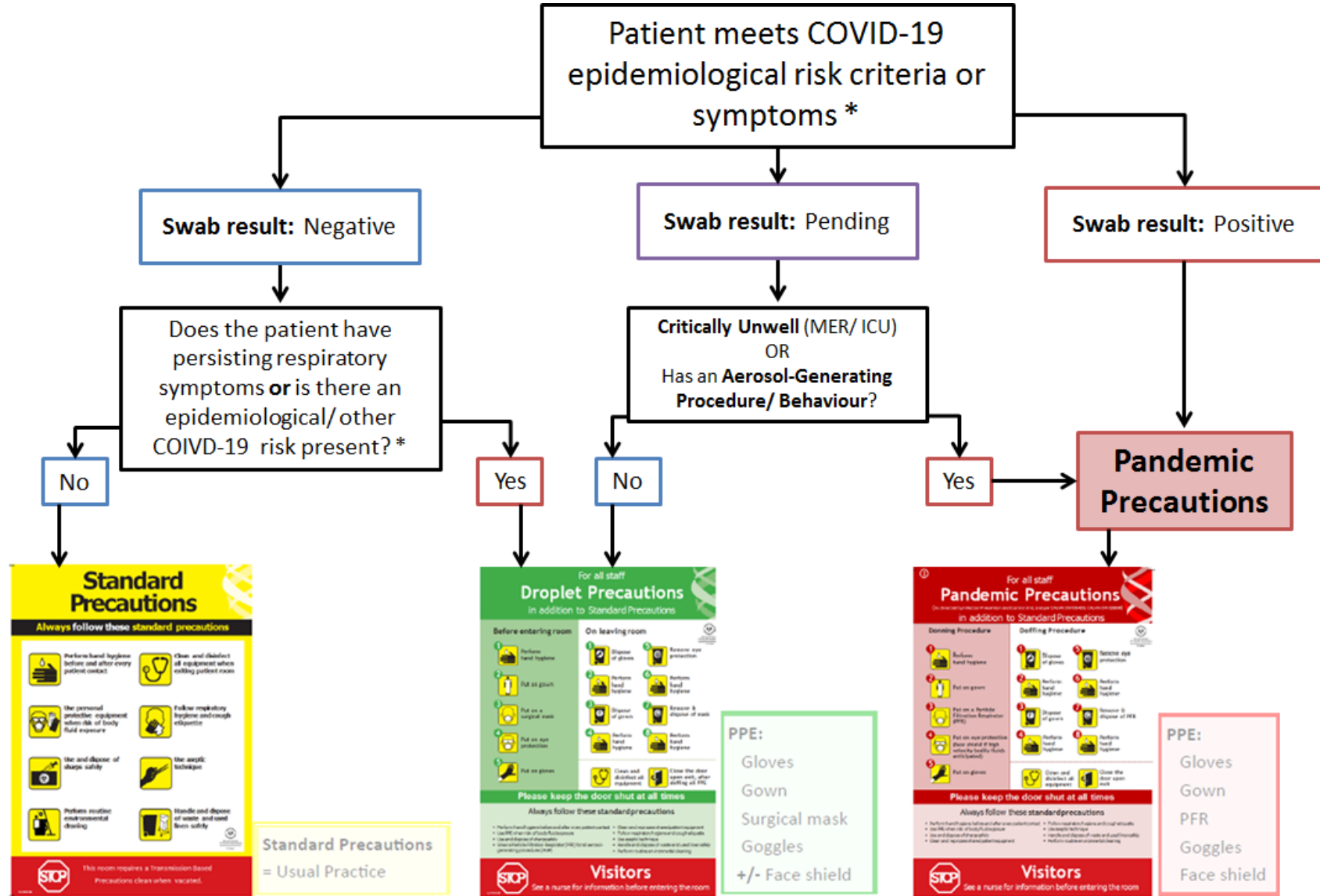


COVID-19: Transmission-Based Precautions Guide

Use the following flowchart as a **guide** in implementing Standard, Droplet, or Pandemic Precautions on patients who have epidemiology risk or symptoms consistent with COVID-19. Always use clinical judgement and refer to local protocols to manage the patient according to their current condition – reassess the patient if their condition changes.



- Patients critically ill, undergoing aerosol generating procedures or exhibiting aerosol generating behaviours should be allocated a negative pressure room if available, otherwise a single room with the door closed is adequate.
- Where a patient on pandemic precautions is allocated a negative pressure room then this should be switched on.

+/- Any additional precautions for other reasons

Other actions: Document EMR isolation order (+ notify IPCU)

* Refer to COVID-19 Portal > CALHN Clinical Resources and Tools > Flowcharts - <https://s3-ap-southeast-2.amazonaws.com/sahealth-rah-assets/general-downloads/CALHN-ED-Inpatient-areas-and-QEH-ED-Quick-reference-flowchart-COVID-19-v19.pdf>

Version 2.1
Updated 30/12/2020