

Welcome to the Aboriginal and Torres Strait Islander Health and Wellbeing Hub

How can the Aboriginal and Torres Strait Islander Health Practitioner help you?

- Connects with patients who are often far from home
- Develops a cultural care plan referring to a range of service providers
- Uses a range of culturally appropriate resources and simple language to ensure that clients understand why they are in hospital and their options for treatment
- Takes time to talk about health risk factors, educate and refer to Aboriginal support services
- Understands, the cultural, environmental and social determinants of health
- Links patients and staff with Aboriginal language interpreters
- Advocates for patient to make sure their voice is heard
- Helps the patient to contact family and community
- Supports patient escorts and family and includes them in the decision making

- Connects with Aboriginal and Torres Strait Islander Health Practitioners in emergency, renal and cancer to provide holistic education across the patient journey
- Liaises with local Aboriginal health services about on-going care post discharge
- Assist with complex discharge care plans to remote areas
- Arranges for Traditional Healers and Ngangkari when available
- Links patients with other services such as Closing the Gap services, NDIS, and Relationships SA
- Ensures a speedy response from the Aboriginal and Torres Strait Islander Health Practitioners

Sites

The Hub is staffed by a team that work across the Royal Adelaide Hospital, The Queen Elizabeth Hospital and the Hampstead Rehabilitation Centre sites

Patients and escorts

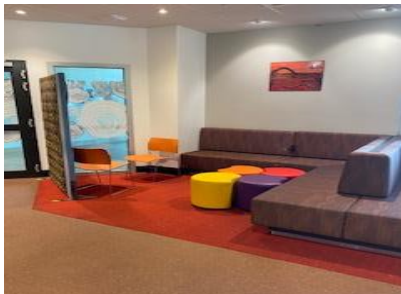
What do patients and escorts need to bring to the hospital?

- Medicare card and/or Medicare number
- Identification
- Pension and/or Concession card
- Relevant test results and/or x-rays
- Medication, tablets and prescriptions
- Name and telephone numbers of your next of kin or carer
- Glasses/contact lenses and/or hearing aids (including batteries and case)
- Personal equipment
- Bank card and bank account details
- BASICS card (income management)
- Money for personal items
- Patient Assisted Travel Scheme (PATS) paperwork
- Warm clothing.

Please note – clearly labelled personal items with your name, address and contact telephone number can help with return of lost items.

About the Aboriginal and Torres Strait Islander Health and Wellbeing Hub

- The Aboriginal and Torres Strait Islander Health and Wellbeing Hub is centrally located in the main entrance on level 3
- Opening hours are from Monday – Friday from 8.30am – 4.30pm
- The Hub offers a welcoming and peaceful environment for our patients and visitors from diverse Aboriginal backgrounds and rural locations
- A dedicated garden featuring Aboriginal artwork and native plants.



To find out more:

Speak to staff in the Aboriginal and Torres Strait Islander Health and Wellbeing Hub.

Royal Adelaide Hospital, 3A690

The Hub is located on level 3 near the main entrance.

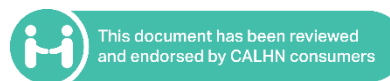
Ph. (08) 7074 5460

E: Health.ATSIUAdmin@sa.gov.au

CALHN's Aboriginal Identity Artwork WARDLI PURRUTINTHI 'Place to live or be alive' has been designed by accomplished Aboriginal South Australian artist Allan Sumner, a descendant of the Ngarrindjeri, Kaurna and Yankunytjatjara people.

The circle in the middle of the artwork represents the 'Wardli Purrutinithi' or Central Adelaide Local Health Network. CALHN is positioned centrally, and connects our hospitals, community health services and clinical services together.

The U-shaped symbols throughout the artwork represent the people of CALHN. The main circle in the middle is surrounded by U-shaped symbols representing staff, health professionals and community people. The U-shaped symbols on the outside of the artwork represent the many community people who utilise CALHN's services.



www.ausgoal.gov.au/creative-commons

© Central Adelaide Local Health Network. All rights reserved

Royal Adelaide Hospital

Aboriginal & Torres Strait Islander Health & Wellbeing Hub

Central Adelaide Local Health Network (CALHN)

Level 3 – Main entrance



Health
Central Adelaide
Local Health Network