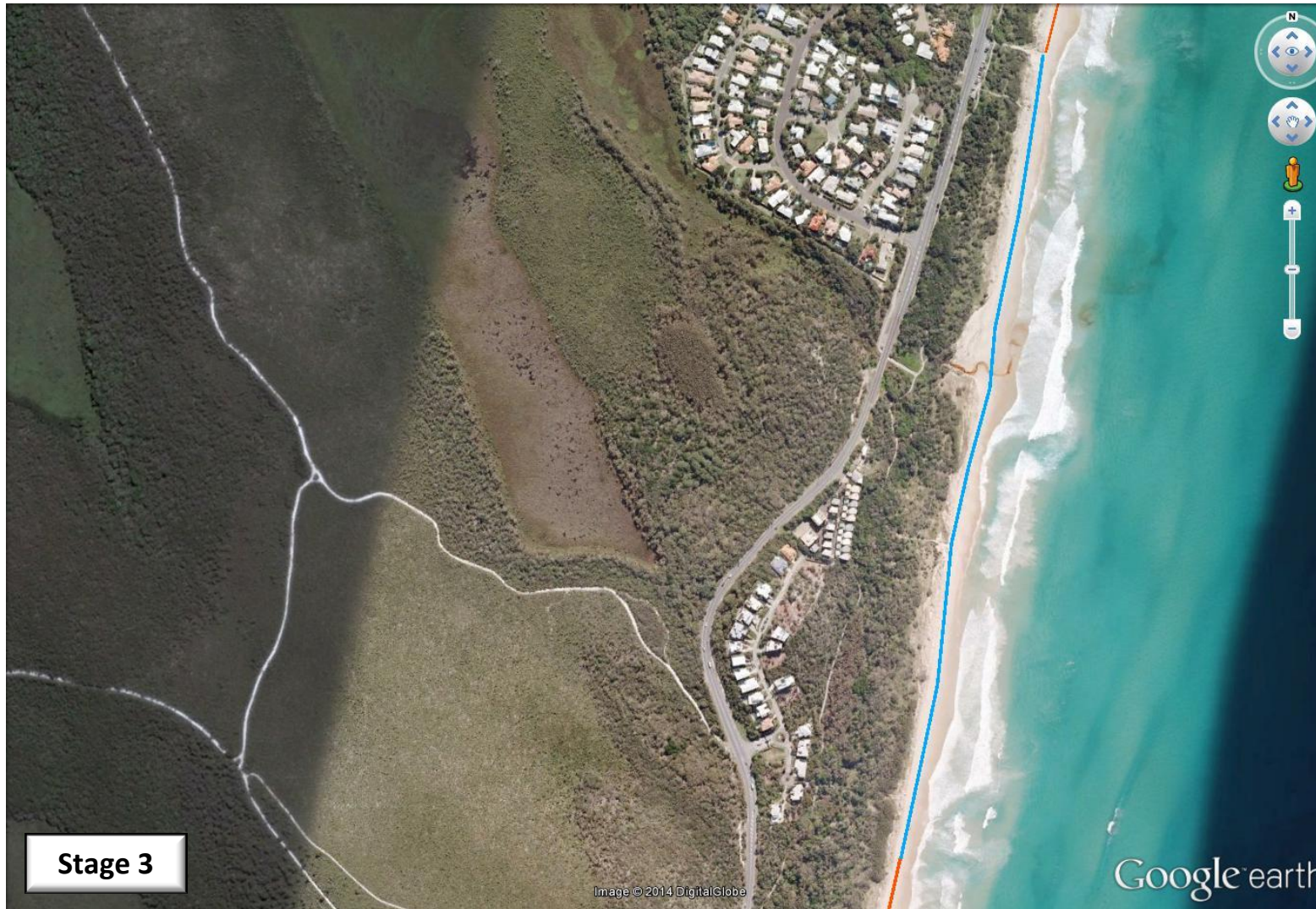


Sunshine Coast Climate Change Relay – 21st of September 2014



All participants are reminded to take their own water, sunburn cream and hat.



-  Creek Crossing
-  River Crossing by Canoe
-  On sidewalk
-  Dog off-leash area
-  Dog off-leash area for part of stage

Please check SC Council website for full details on dog access to the beach.



SUNSHINE COAST Environment Council



Start	Finish	Start time	Distance	Tide	Other
Beach Access 40	Beach Access 44	6:27 AM	1.11 Km		
<p>Stage three features a shallow creek crossing, water in the creek is less than knee deep for an adult but will require removal of footwear.</p>					

NB: All stages start and finish on the beach, i.e. where the beach access spills onto the beach.