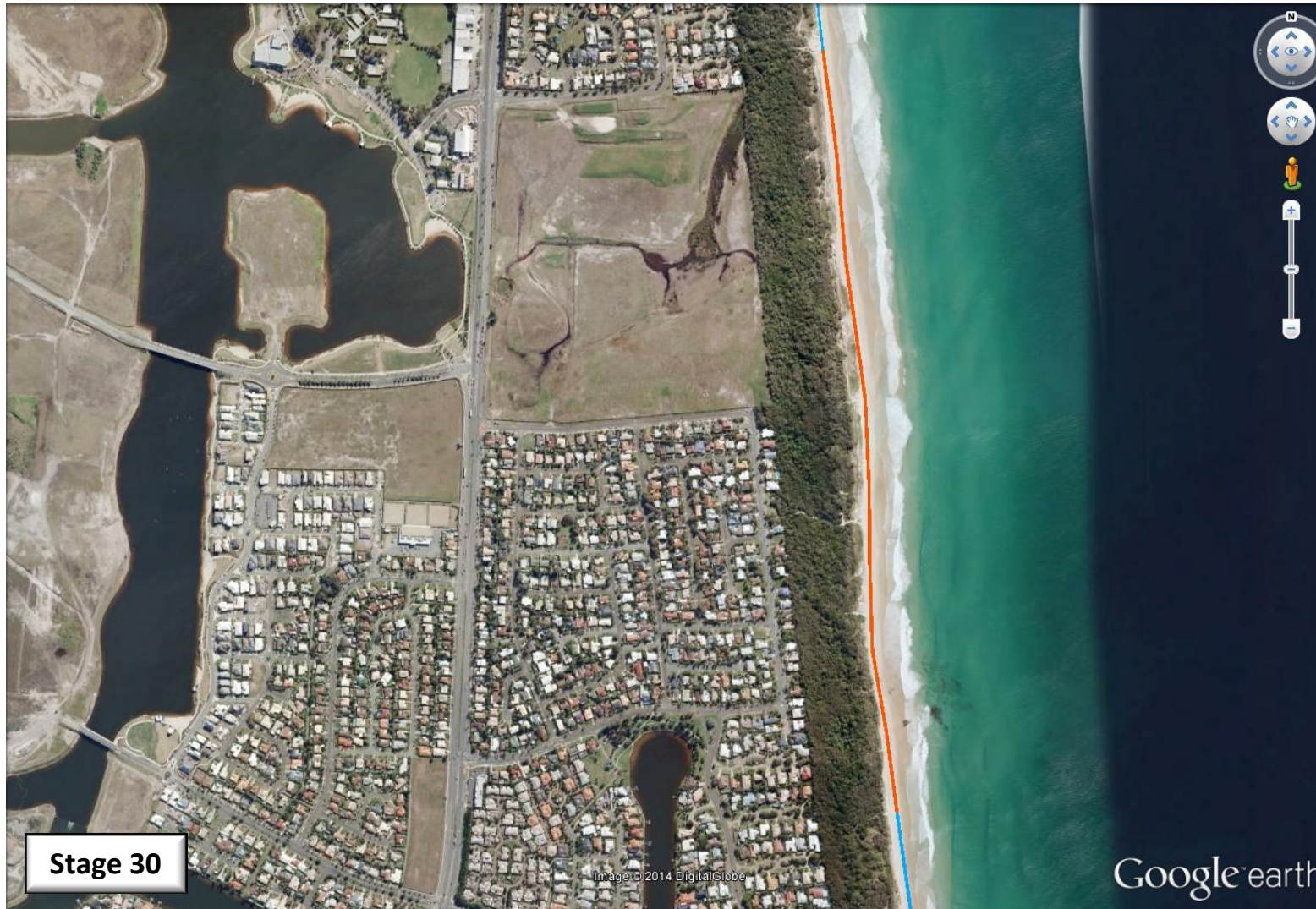


# Sunshine Coast Climate Change Relay – 21<sup>st</sup> of September 2014





**Stage 30**

All participants are reminded to take their own water, sunburn cream and hat.

-  Creek Crossing
-  River Crossing by Canoe
-  On sidewalk
-  Dog off-leash area
-  Dog off-leash area for part of stage

Please check SC Council website for full details on dog access to the beach.



| Start            | Finish           | Start time | Distance | Tide  | Other   |
|------------------|------------------|------------|----------|---|---|
| Beach Access 245 | Beach Access 250 | 3:55 PM    | 1.45 Km  |  |  |
|                  |                  |            |          |   |   |

**NB: All stages start and finish on the beach, i.e. where the beach access spills onto the beach.**