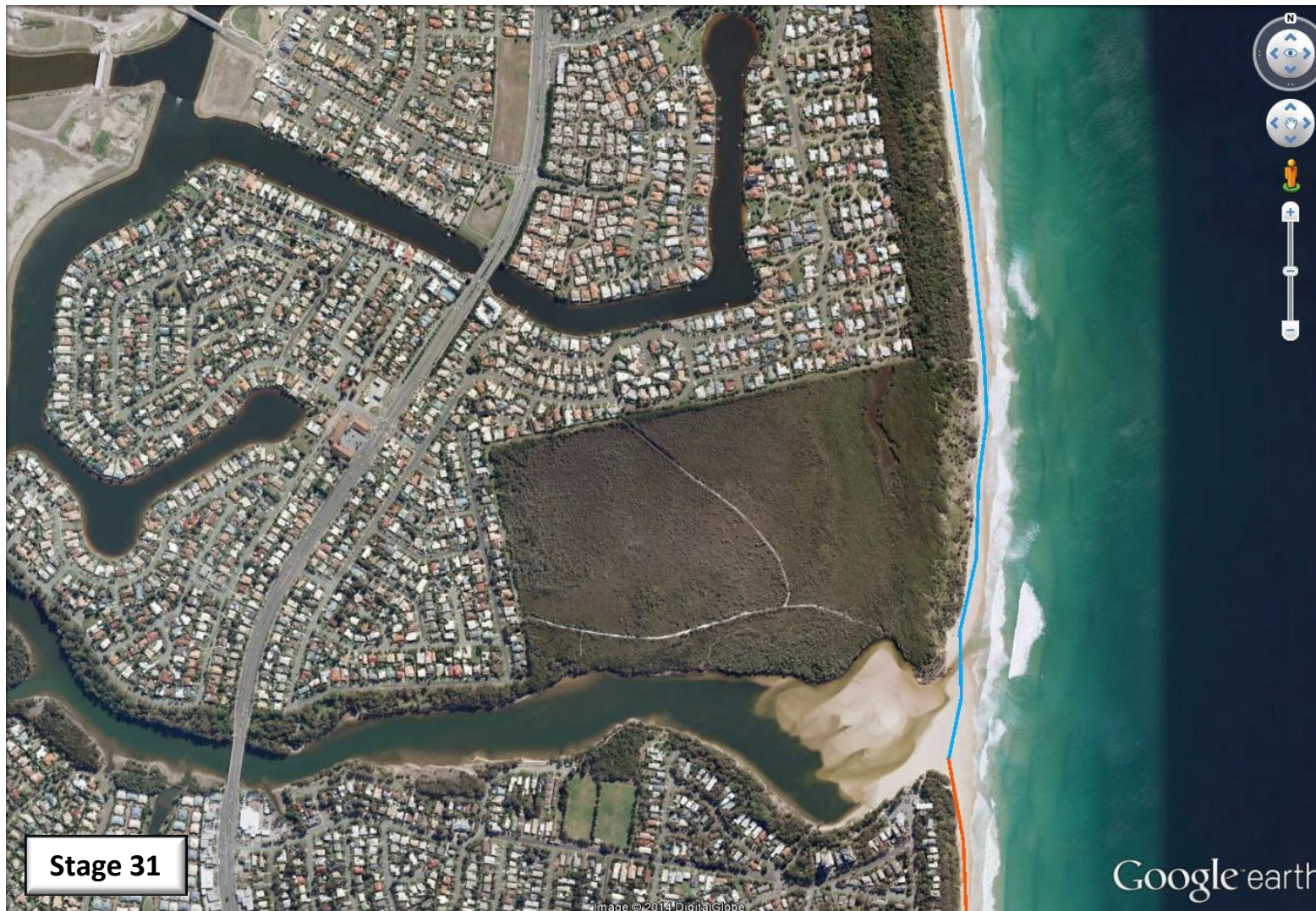


Sunshine Coast Climate Change Relay – 21st of September 2014



Stage 31

All participants are reminded to take their own water, sunburn cream and hat.




-  Creek Crossing
-  River Crossing by Canoe
-  On sidewalk
-  Dog off-leash area
-  Dog off-leash area for part of stage

Please check SC Council website for full details on dog access to the beach.



SUNSHINE COAST Environment Council



Start	Finish	Start time	Distance	Tide	Other
Beach Access 250	Curimundi Lake	4:16 PM	1.35 Km		 
<p>Stage 31 features a creek crossing at the inlet to Lake Currimundi. The inlet is about waste deep on an adult and has a strong current. Participating children MUST be supervised by an adult</p>					

NB: All stages start and finish on the beach, i.e. where the beach access spills onto the beach.